

Inhibitor Cocktails

Protease Inhibitor Cocktail / Phosphatase Inhibitor Cocktail

Protease and Phosphatase Inhibitor Cocktail / Kinase Inhibitor Cocktail

Deacetylase Inhibitor Cocktail

306, Agarwal City Mall, opposite M2K Pitampura,
Delhi-110034 (India)

Table of Contents

Protease Inhibitor Cocktail

HY-K0010	Solution (EDTA-Free, 100× in DMSO)	2
HY-K0011	mini-Tablet (EDTA-Free)	3
HY-K0012	Solution (EDTA-Free, 100× in DMSO, for bacteria)	4

Phosphatase Inhibitor Cocktail

HY-K0021	I: Solution (100× in DMSO)	5
HY-K0022	II: Solution (100× in ddH ₂ O)	6
HY-K0023	III: Solution (100× in DMSO)	7

Protease and Phosphatase Inhibitor Cocktail

HY-K0013	Solution (EDTA-Free, 10× in ddH ₂ O)	8
----------	-------------------------------------------------	---

Kinase Inhibitor Cocktail

HY-K0016	Solution (5×, in ddH ₂ O)	9
----------	--------------------------------------	---

Deacetylase Inhibitor Cocktail

HY-K0030	Solution (100× in 70% DMSO)	10
----------	-----------------------------	----

About MCE

MedChemExpress (MCE) offers a wide range of high quality research chemicals and biochemicals including novel life-science reagents, reference compounds, APIs and natural compounds for laboratory and scientific use. MCE has knowledgeable and friendly customer service and technical support teams with years of experience in the life science industry. MCE will be a reliable and trustworthy partner for your research and scientific projects.

Our Product Portfolio Includes:



Inhibitor Cocktails



Inhibitors



Screening Libraries



Disease-Related Products



Antibody-Drug Conjugate
Related Products



Natural Products



Dye Reagents



Vitamin D-Related Products

And More!

For more product information, please visit us online www.MedChemExpress.com.

For research use only. We do not sell to patients.

306, Agarwal City Mall, opposite M2K Pitampura, Delhi-110034 (India)

Protease Inhibitor Cocktail (EDTA-Free, 100× in DMSO)

Cat. No.: HY-K0010

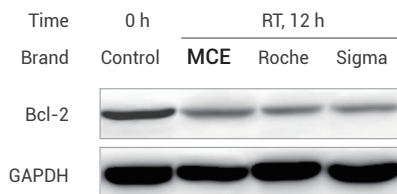
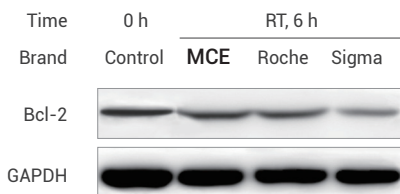
Protease inhibitor cocktail is used in mammalian cell lysates or tissue extracts to increase protein stability.

Applications:

Western Blot, Co-IP, pull-down, IF, IHC, kinase assay and others.

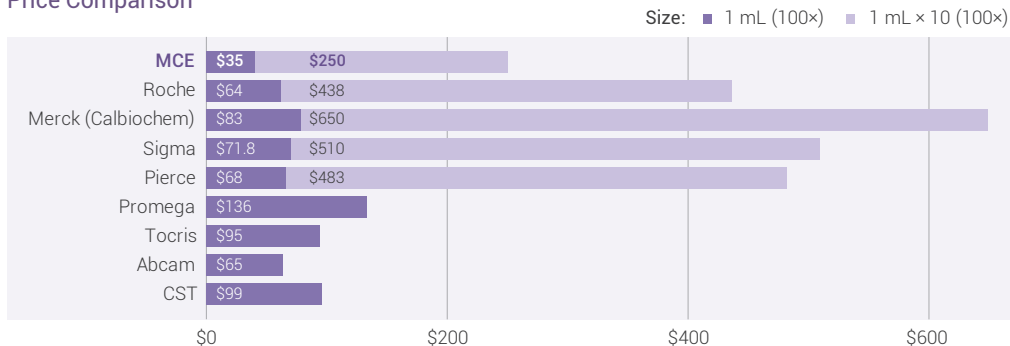
Pre-dissolved in DMSO	Price
1 mL	\$35
1 mL × 10	\$250
1 mL × 50	\$1000
1 mL × 100	\$1500

Customer Review



MCE Protease Inhibitor Cocktail provides Bcl-2 protection in thyroid cancer cell line 8505C, and is most effective after 6-12 hours incubation at room temperature.

Price Comparison



Components

Ingredient	Target	100× Conc.
AEBSF	Serine proteases	104 mM
Aprotinin	Serine proteases	80 μM
Bestatin	Aminopeptidases	5 mM
E-64	Cysteine proteases	1.5 mM
Leupeptin	Serine and cysteine proteases	2 mM
Pepstatin A	Aspartic proteases	1.5 mM

Protease Inhibitor Cocktail, mini-Tablet (EDTA-Free)

Cat. No.: HY-K0011

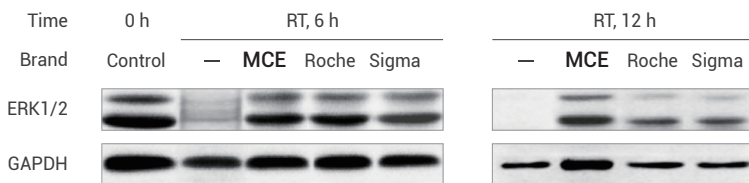
Protease inhibitor cocktail is used in mammalian cell lysates or tissue extracts to increase protein stability. **One mini-Tablet can be added to 10 mL extraction medium directly.**

mini-Tablet	Price
25 pcs	\$120
50 pcs	\$200

Applications:

Western Blot, Co-IP, pull-down, IF, IHC, kinase assay and others.

Customer Review



MCE Protease Inhibitor Cocktail (mini-Tablet) protects ERK1/2 in K1 cell line, and is most effective after 6-12 hours incubation at room temperature.

Components

Ingredient	Target	Inhibitor Type
AEBSF	Serine proteases	Irreversible
Aprotinin	Serine proteases	Reversible
Bestatin	Aminopeptidases	Reversible
E-64	Cysteine proteases	Irreversible
Leupeptin	Serine and cysteine proteases	Reversible

Protease Inhibitor Cocktail, Bacteria (EDTA-Free, 100× in DMSO)

Cat. No.: HY-K0012

MCE Protease Inhibitor Cocktail, Bacteria (EDTA-Free, 100× in DMSO) protects proteins from degradation by endogenous proteases released during protein extraction and purification. This cocktail is supplied as a ready-to-use solution in DMSO. The individual components of this protease inhibitor cocktail have specific inhibitory properties.

Applications:

Western Blot, Co-IP, pull-down, IF, IHC, kinase assay and others.

Pre-dissolved in DMSO	Price
1 mL	\$24
1 mL × 10	\$165
1 mL × 50	\$662

Components

Ingredient	Target	100× Conc.	Inhibitor Type
AEBSF	Serine proteases	23 mM	Irreversible
Bestatin	Aminopeptidases	2 mM	Reversible
E-64	Cysteine proteases	0.3 mM	Irreversible
Pepstatin A	Aspartic proteases	0.3 mM	Reversible

Phosphatase Inhibitor Cocktail I (100× in DMSO)

Cat. No.: HY-K0021

Phosphatase Inhibitor Cocktail I effectively inhibits alkaline phosphatases and serine/ threonine protein phosphatases such as PP1 and PP2A.

Applications:

Western Blot, Co-IP, pull-down, IF, IHC, kinase assay and others.

Pre-dissolved in DMSO	Price
1 mL	\$45
1 mL × 10	\$315
1 mL × 50	\$1330
1 mL × 100	\$1990

Publications Citing Use

Signal Transduct Target Ther. 2022 Feb 25;7(1):53.

Nat Commun. 2022 Oct 5;13(1):5871.

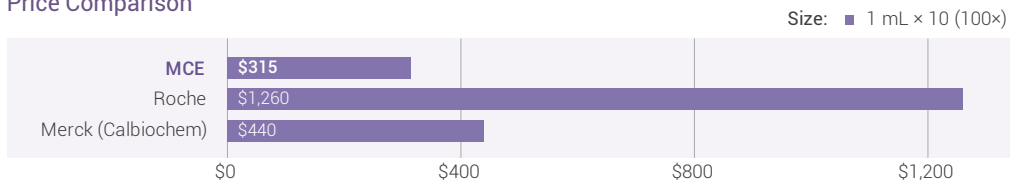
Mol Cell. 2022 Apr 8;S1097-2765(22)00265-9.

Neuron. 2022 Jan 20;S0896-6273(21)01090-4.

NPJ Regen Med. 2022 May 13;7(1):29.

EMBO Mol Med. 2022 Mar 7;14(3):e14455.

Price Comparison



Components

Ingredient	Target	100× Conc.
(-)-p-Bromotetramisole oxalate	Alkaline phosphatases	2.5 mM
Cantharidin	Ser/Thr phosphatases	500 μM
Microcystin LR, <i>Microcystis aeruginosa</i>	PP1 and PP2A	500 nM

Phosphatase Inhibitor Cocktail II (100× in ddH₂O)

Cat. No.: HY-K0022

Phosphatase Inhibitor Cocktail II effectively inhibits acid and alkaline phosphatases as well as protein tyrosine phosphatases (PTPs).

Applications:

Western Blot, Co-IP, pull-down, IF, IHC, kinase assay and others.

Pre-dissolved in ddH ₂ O	Price
1 mL	\$38
1 mL × 10	\$265
1 mL × 50	\$1106
1 mL × 100	\$1660

Publications Citing Use

Immunity. 2023 Feb 22;S1074-7613 (23) 00073-0.

Metabolism. 2023 Feb 24;155528.

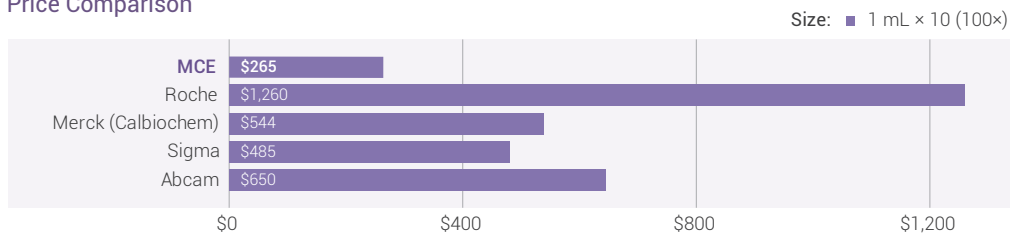
Signal Transduct Target Ther. 2022 Dec 24;7 (1) :399.

Mol Cell. 2022 Apr 8;S1097-2765 (22) 00265-9.

Neuron. 2022 Jan 20;S0896-6273 (21) 01090-4.

Nat Commun. 2022 Feb 15;13 (1) :874.

Price Comparison



Components

Ingredient	Target	100× Conc.
Sodium Fluoride	Acid phosphatases	100 mM
Sodium Orthovanadate	Alkaline phosphatases, PTPs, ATPases	100 mM
Sodium Tartrate Dihydrate	Acid phosphatases	400 mM
Sodium Molybdate	Acid and phosphoprotein phosphatases	115 mM
Imidazole	Alkaline phosphatases	200 mM

Phosphatase Inhibitor Cocktail III (100× in DMSO)

Cat. No.: HY-K0023

Phosphatase Inhibitor Cocktail III effectively inhibits serine/threonine and alkaline phosphatases.

Applications:

Western Blot, Co-IP, pull-down, IF, IHC, kinase assay and others.

Pre-dissolved in DMSO	Price
1 mL	\$55
1 mL × 10	\$395
1 mL × 50	\$1840
1 mL × 100	\$2765

Publications Citing Use

Mol Ther. 2022 Sep 14;S1525-0016(22)00560-3.

J Adv Res. 2022 Sep 7;S2090-1232(22)00203-X.

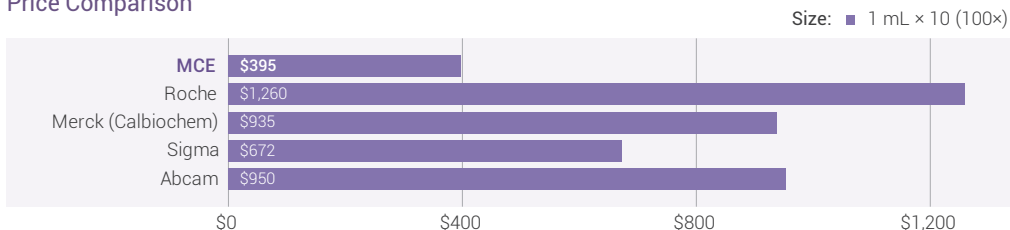
Nutrients. 2022 Apr 30;14(9):1898.

Exp Mol Med. 2022 Feb;54(2):129-142.

Int J Biol Sci. 2022;18(4): 1737-1754.

Mol Med. 2022 Sep 6;28(1):106.

Price Comparison



Components

Ingredient	Target	100× Conc.
(-)-p-Bromolevamisole oxalate	Alkaline phosphatases	2.5 mM
Cantharidin	Protein phosphatase 2A (PP2A)	500 μM
Calyculin A	Protein phosphatases 1 and 2A (PP1 and PP2A)	1 μM

Protease and Phosphatase Inhibitor Cocktail (EDTA-Free, 10× in ddH₂O)

Cat. No.: HY-K0013

Protease and Phosphatase Inhibitor Cocktail (EDTA-Free, 10× in ddH₂O) protects protein from degradation by endogenous proteases released during protein extraction and purification.

This cocktail is AEBSF free and mass spectroscopy compatible—water soluble. The protease inhibitors target serine proteases, aminopeptidase B, leucine aminopeptidase, cysteine proteases, metalloproteases. The phosphatase inhibitors target serine/threonine phosphatases, acid phosphatases, protein tyrosine.

Applications:

Western Blot, Co-IP, pull-down, IF, IHC, kinase assay and others.

Pre-dissolved in ddH ₂ O	Price
1 mL	\$50
1 mL × 10	\$350
1 mL × 50	\$1380

Components

Ingredient	Target	10× Conc.	Inhibitor Type
Aprotinin	Serine proteases	0.08 mM	Reversible
Bestatin	Aminopeptidases	5 mM	Reversible
E-64	Cysteine proteases	1.5 mM	Irreversible
Leupeptin hemisulfate	Serine and Cysteine proteases	2 mM	Reversible
β-Glycerophosphate	Serine and Threonine phosphatases	10 mM	Reversible
Sodium fluoride	Serine and Threonine phosphatases	50 mM	Reversible
Sodium orthovanadate	Tyrosine phosphatases	1 mM	Reversible
Sodium pyrophosphate decahydrate	Serine and Threonine phosphatases	10 mM	Irreversible

Kinase Inhibitor Cocktail (5x, in ddH₂O)

Cat. No.: HY-K0016

MCE Kinase Inhibitor Cocktail (5x, in ddH₂O) controls the biological activity of kinases. This small molecule/inhibitor is primarily used for Biochemicals applications.

This cocktail is supplied as a ready-to-use solution in ddH₂O.

The individual components of this kinase inhibitor cocktail have specific inhibitory properties. MOPS are commonly used in biology as buffers that maintain the pH of mammalian cell culture media. β-glycerophosphate disodium salt pentahydrate inhibits phosphatase. EGTA is a special calcium chelator.

Sodium orthovanadate is a protein tyrosine phosphatase, an inhibitor of alkaline phosphatase and some ATPase enzymes.

DL-dithiothreitol (DTT) is a strong reducing agent.

Applications:

Western Blot, Co-IP, pull-down, IF, IHC, kinase assay and others.

Pre-dissolved in ddH ₂ O	Price
1 mL	\$23
1 mL × 10	\$157
1 mL × 50	\$628

Components

Ingredient	5 × Conc.	M.W.
MOPS	20 mM	209.26
β-glycerol phosphate	25 mM	306.11
EGTA	5 mM	380.35
Sodium Orthovanadate	1 mM	183.91
Dithiothreitol	1 mM	154.25

Deacetylase Inhibitor Cocktail (100× in 70% DMSO)

Cat. No.: HY-K0030

Deacetylase Inhibitor Cocktail is a synergistic combination of chemicals designed to preserve the acetylation state of proteins.

Applications:

Western Blot, Co-IP, pull-down, IF, IHC, kinase assay and others.

Pre-dissolved in DMSO	Price
1 mL	\$45
1 mL × 10	\$200
1 mL × 50	\$800
1 mL × 100	\$1280

Publications Citing Use

Cell Death Dis. 2022 Oct 21;13(10):888.

Endocrinology. 2022 Feb 5;bqac014.

FASEB J. 2022 Jul;36(7):e22418.

University of Minnesota. April 2022.

Components

Ingredient	Target	100× Conc.
Trichostatin A	Class I/II HDAC	40 μM
EX-527	SIRT	1 mM
Nicotinamide	Class III HDAC	400 mM
Sodium Butyrate	Class I/II HDAC	200 mM



Inhibitors • Screening Libraries • Proteins

www.MedChemExpress.com

MedChemExpress USA

Tel: 609-228-6898

Fax: 609-228-5909

E-mail: sales@MedChemExpress.com

Address: 1 Deer Park Dr, Suite Q, Monmouth Junction, NJ 08852, USA

MedChemExpress China

Tel: +86-021-58955995

Fax: +86-021-53700325

E-mail: sales@MedChemExpress.cn

Address: No.1999, Zhangheng Road, Shanghai, P.R., 201203, China.

306, Agarwal City Mall, opposite M2K Pitampura,
Delhi-110034 (India)