

# PolyFast Transfection Reagent

## HY-K1014



MedChemExpress (MCE) PolyFast Transfection Reagent consists of cationic polymers and can introduce nucleic acids (DNA or RNA) into eukaryotic cells. PolyFast Transfection Reagent has high transfection efficiency and low-toxicity in many cell types (lines), including some ‘hard-to-transfect’ cells.

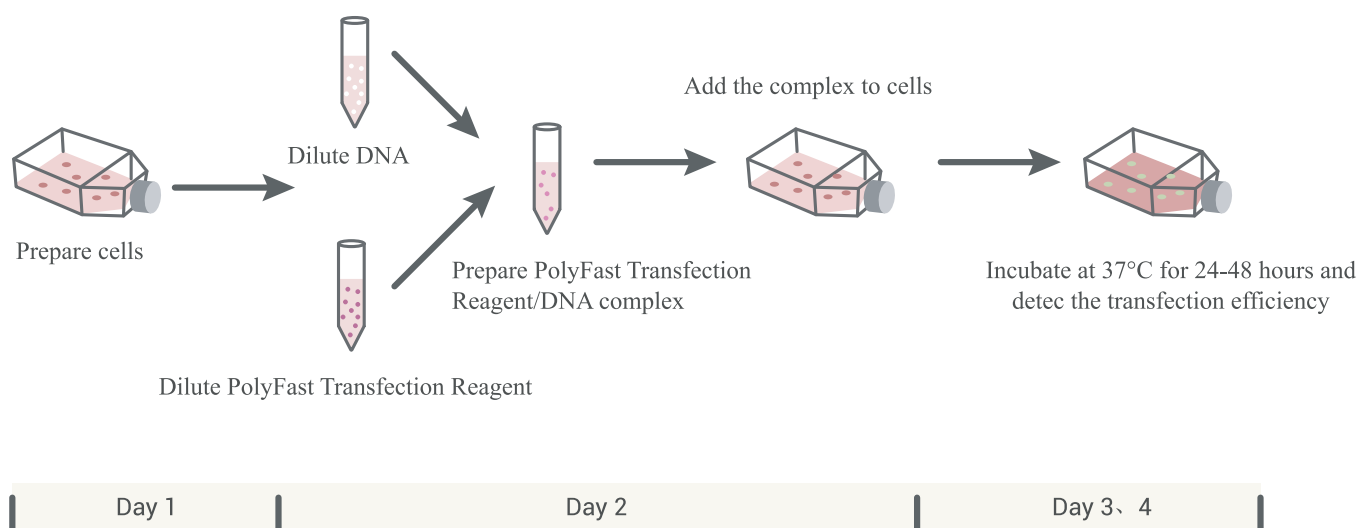


Figure 1. Transfection Protocol

- Product Advantages
- High Transfection Efficiency
- Low Cytotoxicity
- Widely applicable to many cell lines

### Performance Data

Cell lines that can be transfected (transfection efficiency of cell lines are shown)				
293T (>90%)	BHK-21 (>80%)	HuH-7 (>75%)	HepG2 (>75%)	Vero (>40%)
HMEC-1 (>40%)	U118 MG (>25%)	SKNSH (>25%)	CHO-K1 (>70%)	MDCK (>65%)
THP-1	K562	C6/36	A549	HT-29
HeLa	HUVEC	SP2/0	P3X63Ag8	PBMCs
SF9	S2			

www.MedChemExpress.com

Inhibitors • Screening Libraries • Proteins

Figure 2. 293T Cells transfected by pcDNA3-C-RFP plasmid.  
Condition: plasmid (2.5 µg)/ PolyFast Transfection Reagent (7.5 µL)/24h  
Cell density: 10 cm culture dish with 70% confluence

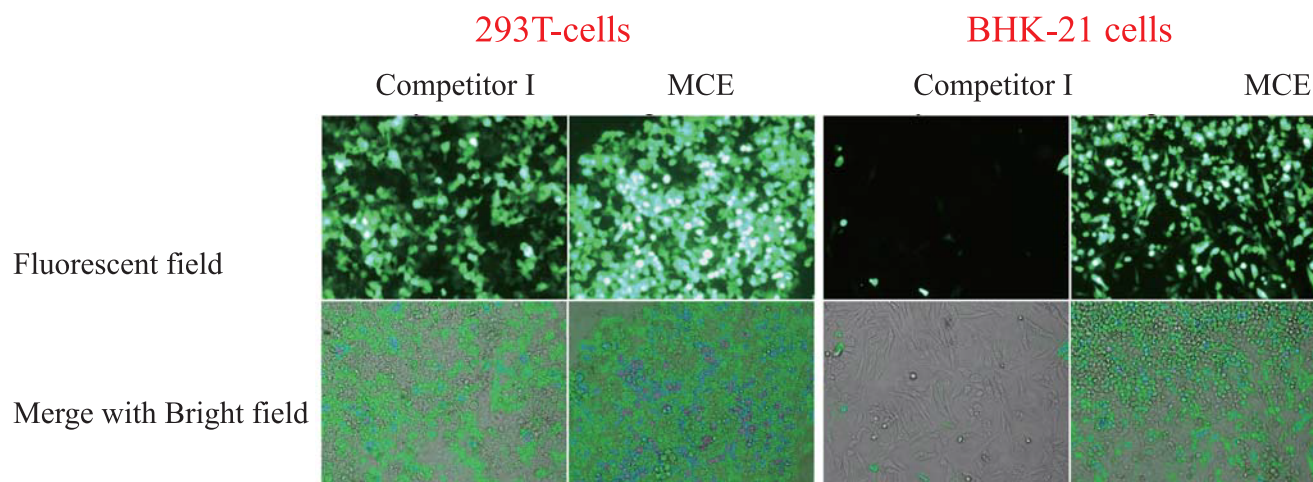
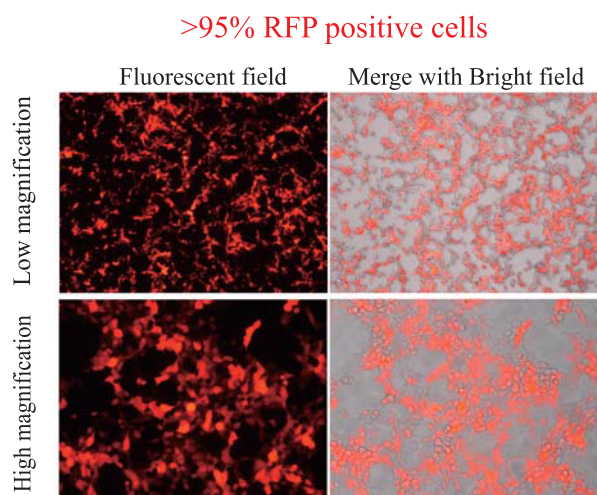


Figure 3. Comparison of transfection efficiency between MCE and competitor in 293T cells and BHK-21 cells.

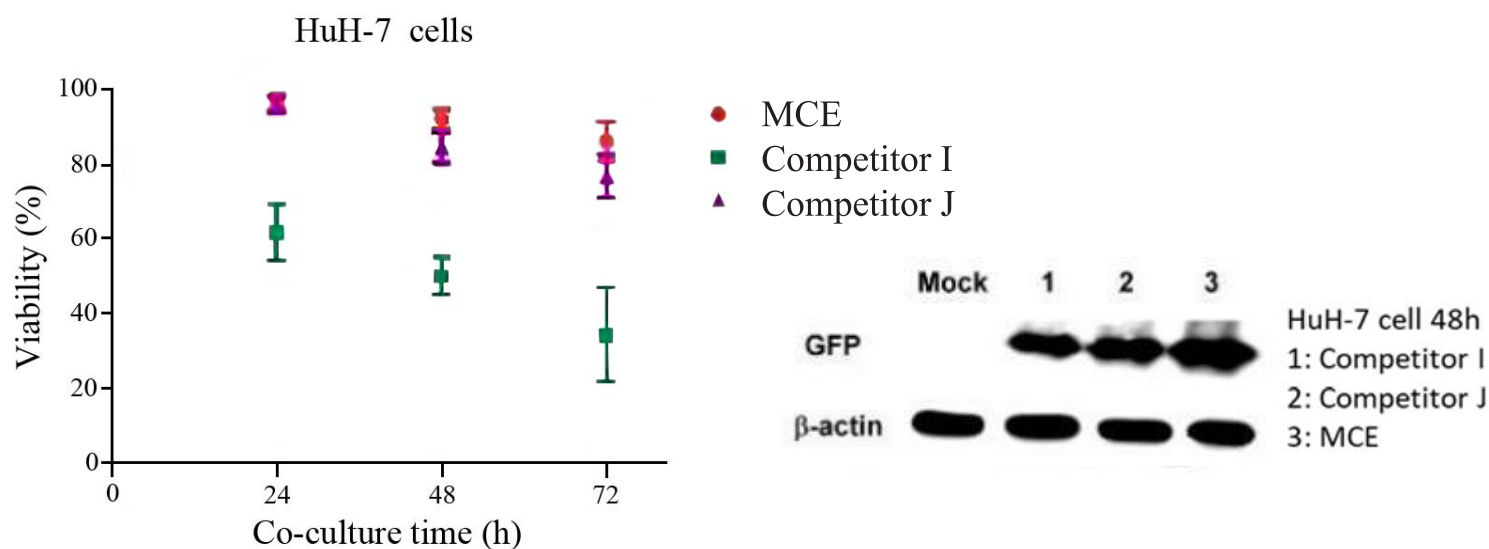


Figure 4. Comparison of cell viability and transfection efficiency between MCE and competitors in HuH-7 cells.

**MedChemExpress USA**

Tel: 609-228-6898      E-mail: sales@MedChemExpress.com  
 Fax: 609-228-5909      Tech Support: tech@MedChemExpress.com  
 Address: 1 Deer Park Dr, Suite Q, Monmouth Junction, NJ 08852, USA

**MedChemExpress China**

Tel: 021-58955995      E-mail: sales@MedChemExpress.cn  
 Fax: 021-53700325      Tech Support: tech@MedChemExpress.cn  
 Address: No.1999, Zhangheng Road, Shanghai, P.R., 201203, China.

For research use only.  
We do not sell to patients.

**Master of Bioactive Molecules**

www.MedChemExpress.com

306, Agarwal City Mall, opposite M2K Pitampura, Delhi-110034 (India)