

PRODUCT	Valerian (<i>Valeriana officinalis</i>) Root
PART NUMBER	00034900
REFERENCE TYPE	Biomass Reference Material (BRM) *
LOT NUMBER	00034900-113
COMMON NAME	Valerian
LATIN NAME	<i>Valeriana officinalis</i> L. [Valerianaceae]
PLANT PART	Root
CDXA NUMBER	CDXA-08-3048
REPORT NUMBER	CDXA-BRMR-091-02
DATE OF SAMPLE	10/18/2002
DATE OF RE-EVALUATION	07/19/2013 (1 st); 06/21/2018 (2 nd)
DATE OF REPORT	09/19/2018

*Note – Biomass Reference Material (BRM) is not a voucher specimen

ANALYTICAL RESULTS

TEST	METHOD	RESULT
Appearance	Macroscopy	(1) Light brown powder
Anatomy/Morphology	Microscopy	(1) Pitted and reticulated vessels (200X) (2) Fragment of epidermis showing sinuous walls (100X)
HP-TLC	CDXA-TLCM-079-02	Conforms

STORAGE CONDITIONS

STORAGE	20-30 °C; Dry storage area; Insect free; Volatile free
EXPIRATION DATE	06/2023 under the above conditions

This document is the property of ChromaDex, Inc. and/or its relevant affiliates and contains confidential and proprietary material for the sole use of the intended recipient(s). Any review, use, distribution or disclosure by or to others is strictly prohibited.

MACROSCOPY

(1)



MICROSCOPY

(1)



(2)

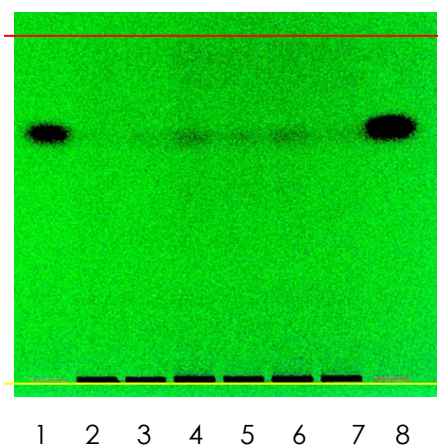


HP-TLC CONDITIONS

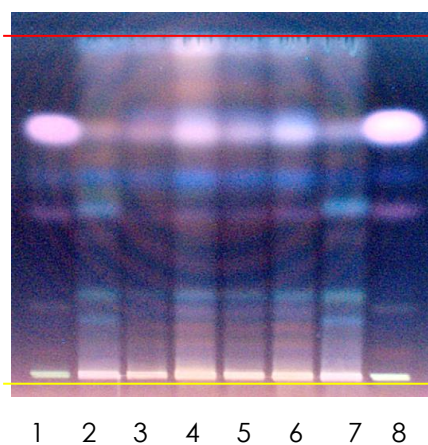
STATIONARY PHASE	Silica gel 60, F ₂₅₄ , 10 x 10 cm HP-TLC plates
SAMPLE PREPARATION	0.5 g + 5 mL dichloromethane sonicate in room temperature water ~10 minutes then filtered through a 0.45 µm PTFE syringe filter.
MOBILE PHASE	Hexane/ ethyl acetate/ acetic acid [13/7/0.1]
CHAMBER TEMPERATURE	Ambient
DETECTION	(1) UV 254 nm (2) Anisaldehyde → UV 366 nm (3) Anisaldehyde → White light

HP-TLC PLATES

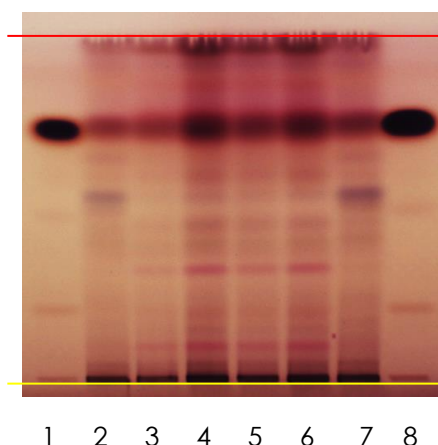
UV 254 nm



Anisaldehyde → UV 366 nm



Anisaldehyde → White light



YELLOW LINE = SAMPLE ORIGIN
RED LINE = SOLVENT FRONT @ 70 mm

HP-TLC LANE APPLICATIONS

Lane	ID	Lane	ID
1	Valerenic Acid	5	Valeriana officinalis BRM
2	Valeriana officinalis Reference extract	6	Valeriana officinalis BRM
3	Valeriana officinalis BRM	7	Valeriana officinalis Reference extract
4	Valeriana officinalis BRM	8	Valerenic Acid

REVISION HISTORY

<u>Revision History</u>	<u>Date of Revision</u>	<u>Document/Changes</u>
00	12/12/2008	New report
01	07/09/2013	Passed re-evaluation; updated expiration date; general template update
02	09/19/2018	Passed second reevaluation by HP-TLC. Updated expiration date, HP-TLC conditions, HP-TLC plates, and detection.

This document is the property of ChromaDex, Inc. and/or its relevant affiliates and contains confidential and proprietary material for the sole use of the intended recipient(s). Any review, use, distribution or disclosure by or to others is strictly prohibited.