

PRODUCT	<i>Carica papaya</i> (Papaya) Fruit
PART NUMBER	00031309
REFERENCE TYPE	Biomass Reference Material (VBRM) *
LOT NUMBER	00031309-441
COMMON NAME	Papaya
LATIN NAME	<i>Carica papaya</i> L. [Caricaceae]
PLANT PART	Fruit
CDXA NUMBER	CDXA-11-5685
REPORT NUMBER	CDXA-VBRMR-117-02
DATE OF SAMPLE	27 February 2012
DATE OF RE-EVALUATION	12 May 2016 (1 st); 06/25/2020 (2 nd)
DATE OF REPORT	08/03/2020



*Note – Vouchered (V) BRM is a voucher specimen
 A full-size color voucher copy may be purchased by contacting the ChromaDex sales office

ANALYTICAL RESULTS

TEST	METHOD	RESULT
Appearance	Macroscopy	(1) Whole/Cut: Brown dried cut fruit pieces Milled: Dark brown powder with lighter pieces
Anatomy/Morphology	Microscopy	(1) Cells of the exocarp (200x) (2) Vascular structure of the endocarp (200x)
HP-TLC	CDXA-TLCM- 358-00	Conforms

STORAGE CONDITIONS

STORAGE 20-30 °C; Dry storage area; Insect free; Volatile free
EXPIRATION DATE 06/2025 under the above conditions

This document is the property of ChromaDex, Inc. and/or its relevant affiliates and contains confidential and proprietary material for the sole use of the intended recipient(s). Any review, use, distribution or disclosure by or to others is strictly prohibited.

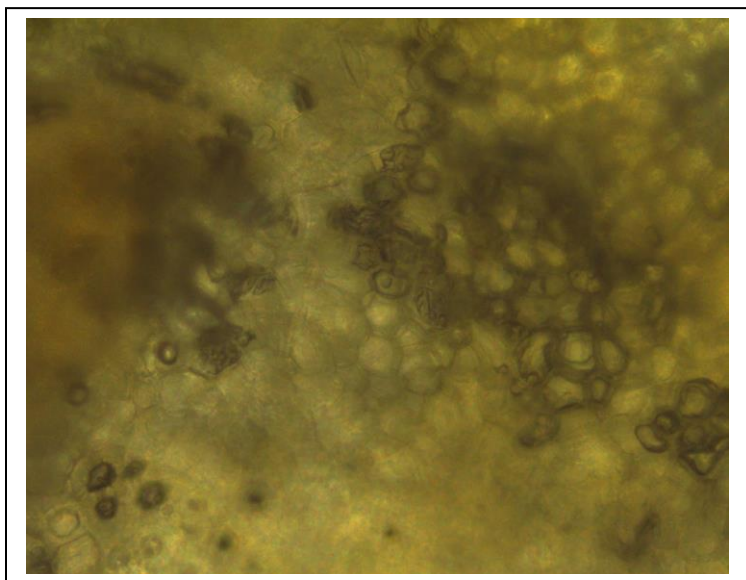
MACROSCOPY

(1)

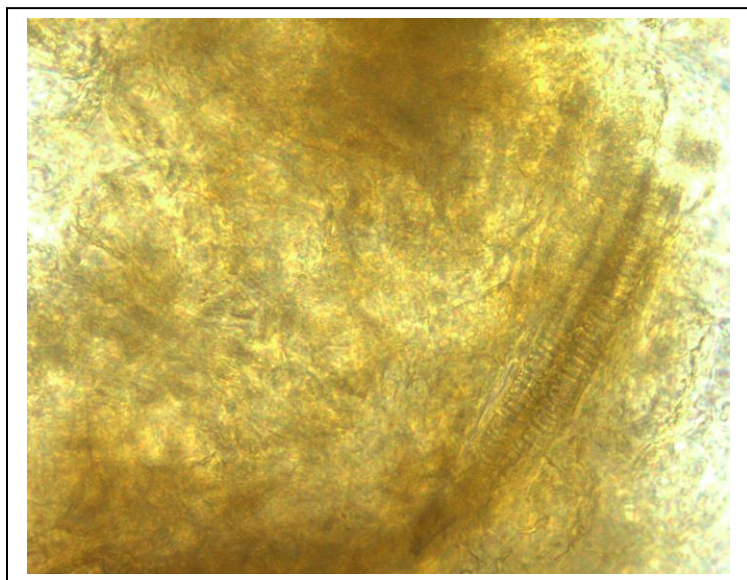


MICROSCOPY

(1)



(2)

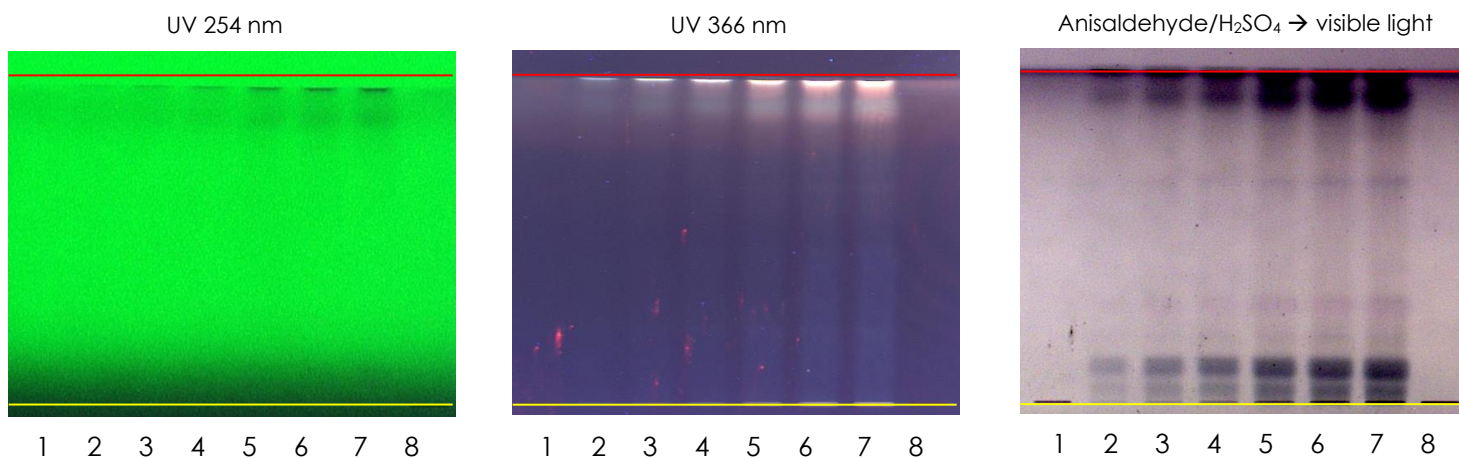


This document is the property of ChromaDex, Inc. and/or its relevant affiliates and contains confidential and proprietary material for the sole use of the intended recipient(s). Any review, use, distribution or disclosure by or to others is strictly prohibited.

HP-TLC CONDITIONS

STATIONARY PHASE	Silica gel 60, F ₂₅₄ , 10 x 10 cm HP-TLC plates
SAMPLE PREPARATION	0.5 g + 5 mL methanol, sonicated in hot water bath for ~10 minutes.
MOBILE PHASE	Ethyl acetate/ formic acid/ acetic acid/ Milli-Q water [10/1.1/1.1/2.6]
CHAMBER TEMPERATURE	Ambient
DETECTION	(1) UV 254 nm (2) UV 366 nm (3) Anisaldehyde/H ₂ SO ₄ reagent → visible light

HP-TLC PLATES



YELLOW LINE = SAMPLE ORIGIN
RED LINE = SOLVENT FRONT @ 70 mm

HP-TLC LANE APPLICATIONS

Lane	ID	Lane	ID
1	β-carotene	5	<i>Carica papaya</i> VBRM
2	<i>Carica papaya</i> VBRM	6	<i>Carica papaya</i> VBRM
3	<i>Carica papaya</i> VBRM	7	<i>Carica papaya</i> VBRM
4	<i>Carica papaya</i> VBRM	8	β-carotene

This document is the property of ChromaDex, Inc. and/or its relevant affiliates and contains confidential and proprietary material for the sole use of the intended recipient(s). Any review, use, distribution or disclosure by or to others is strictly prohibited.

REVISION HISTORY

<u>Revision History</u>	<u>Date of Revision</u>	<u>Document/Changes</u>
00	03/06/12	New report
01	05/13/16	Passed re-evaluation; updated expiration date; general template update; updated TLC pictures; added revision history
02	08/03/2020	Material passed re-evaluation by HP-TLC. Updated template and expiration date.

This document is the property of ChromaDex, Inc. and/or its relevant affiliates and contains confidential and proprietary material for the sole use of the intended recipient(s). Any review, use, distribution or disclosure by or to others is strictly prohibited.