

PRODUCT	<i>Lavandula angustifolia</i> (English Lavender) Flower
PART NUMBER	00031204
REFERENCE TYPE	Biomass Reference Material (VBRM) *
LOT NUMBER	00031204-136
COMMON NAME	English Lavender
LATIN NAME	<i>Lavandula angustifolia</i> Mill. [Lamiaceae]
PLANT PART	Flowers
SAMPLE NUMBER	CDXA-BRM-136
REPORT NUMBER	CDXA-VBRM-028-02
DATE OF SAMPLE	11/01/2006
DATE OF REEVALUATION	02/01/2012 (1 st); 12/17/2020 (2 nd)
DATE OF REPORT	03/26/2021



*Note – Vouchered (V) BRM is a voucher specimen

A full-size color voucher copy may be purchased by contacting the ChromaDex sales office

ANALYTICAL RESULTS

TEST	METHOD	RESULT
Appearance	Macroscopy	(1) Whole/Cut: Small purple flowers
Anatomy/Morphology	Microscopy	(1) Covering trichomes bifurcating at one or more levels (400x) (2) Secretory trichomes with long uneven stalks and unicellular heads (400x)
HP-TLC	See HP-TLC conditions	Conforms

STORAGE CONDITIONS

STORAGE	20-30 °C; Dry storage area; Insect free; Volatile free
EXPIRATION DATE	12/2025 under the above conditions

This document is the property of ChromaDex, Inc. and/or its relevant affiliates and contains confidential and proprietary material for the sole use of the intended recipient(s). Any review, use, distribution, or disclosure by or to others is strictly prohibited.

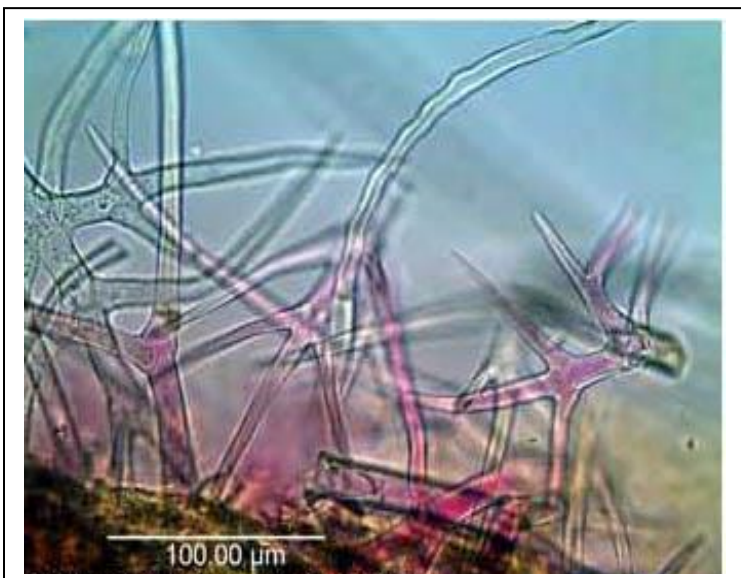
MACROSCOPY

(1)

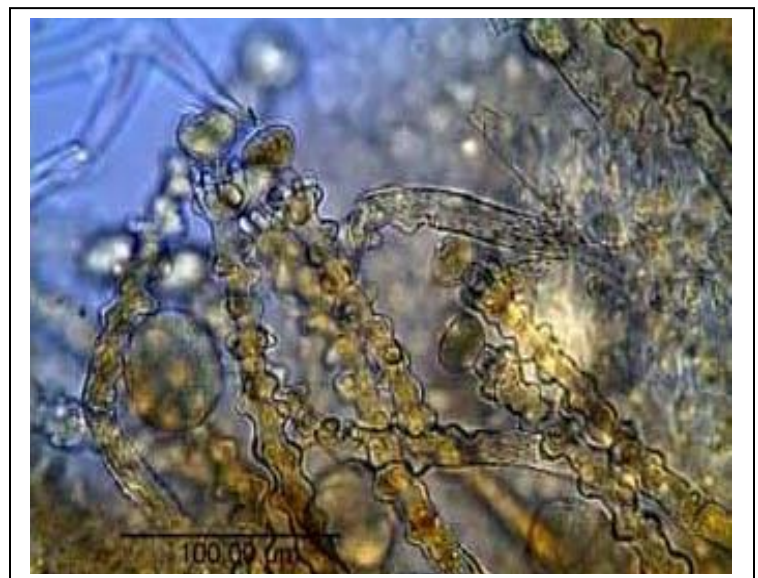


MICROSCOPY

(1)



(2)



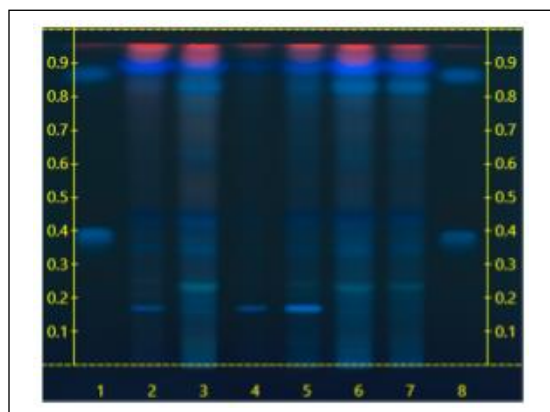
This document is the property of ChromaDex, Inc. and/or its relevant affiliates and contains confidential and proprietary material for the sole use of the intended recipient(s). Any review, use, distribution, or disclosure by or to others is strictly prohibited.

HP-TLC CONDITIONS

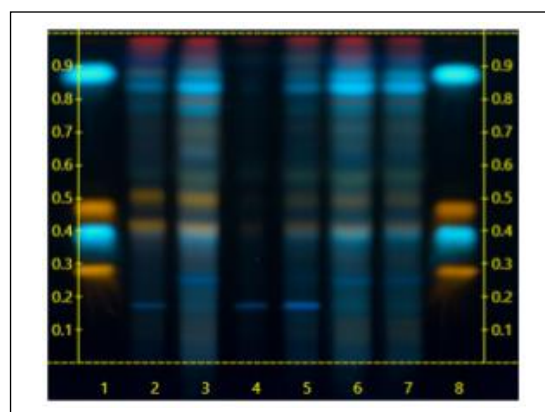
STATIONARY PHASE	Silica gel 60, HPTLC plates
SAMPLE PREPARATION	0.3 g + 3 mL Methanol, sonicate/heat at 50 °C for 30 min.
MOBILE PHASE	Ethyl Acetate: Acetic acid: Formic Acid: Water [10/0.9/0.9/2]
DETECTION	(1) UV 366 nm (2) Natural Product + Polyethylene Glycol, 366nm

HP-TLC PLATES

HP-TLC (1)



HP-TLC (2)



HP-TLC LANE APPLICATIONS

Lane	ID	Lane	ID
1	Rutin (2 µL)	5	<i>Lavandula angustifolia</i> flower VBRM (3 µL)
2	<i>Lavandula angustifolia</i> / <i>Lavandula officinalis</i> Chaix. herb (3 µL)	6	<i>Lavandula intermedia</i> flower (4 µL)
3	<i>Lavandula angustifolia</i> / <i>Lavandula officinalis</i> Chaix. flower (3 µL)	7	<i>Lavandula intermedia</i> flower (2 µL)
4	<i>Lavandula angustifolia</i> flower VBRM (0.5 µL)	8	Rutin (2 µL)

REVISION HISTORY

<u>Revision History</u>	<u>Date of Revision</u>	<u>Document/Changes</u>
00	02/27/2007	New report
00	02/01/2012	Material passed reevaluation by HP-TLC. Updated expiration date and template.
01	08/21/2018	Material passed reevaluation by HP-TLC. Updated expiration date, template, HP-TLC method conditions, plates, and lane applications.
02	03/26/2021	Material passed reevaluation by HP-TLC. Updated expiration date, template, HP-TLC method conditions, plates, and lane applications.

This document is the property of ChromaDex, Inc. and/or its relevant affiliates and contains confidential and proprietary material for the sole use of the intended recipient(s). Any review, use, distribution, or disclosure by or to others is strictly prohibited.