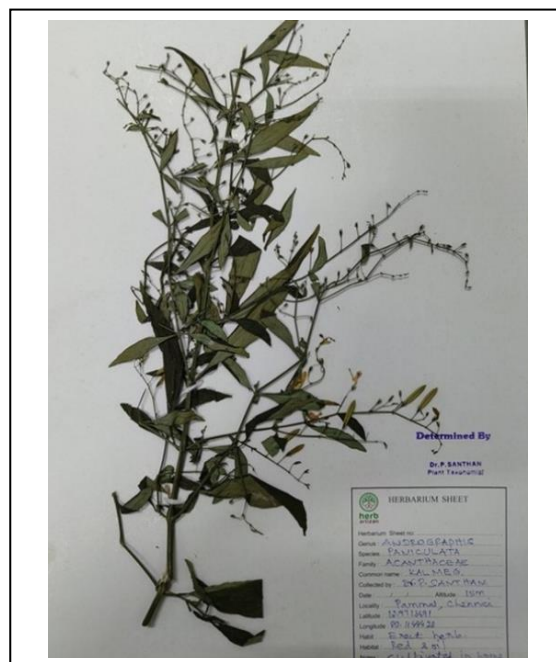


PRODUCT	<i>Andrographis paniculata</i> (Andrographis) Aerial Parts
PART NUMBER	00031074
REFERENCE TYPE	Biomass Reference Material (VBRM) *
LOT NUMBER	00031074-001
COMMON NAME	Andrographis
LATIN NAME	<i>Andrographis paniculata</i> (Burm.f.) Nees [Acanthaceae]
PLANT PART	Aerial
SAMPLE NUMBER	CDXP-22-00675
REPORT NUMBER	CDXA-VBRM-212-00
DATE OF SAMPLE	08/03/2022
DATE OF REPORT	09/01/2022



*Note – Vouchered (V) BRM is a voucher specimen

A full-size color voucher copy may be purchased by contacting the ChromaDex sales office

ANALYTICAL RESULTS

TEST	METHOD	RESULT
Appearance	Macroscopy	(1) Whole/Cut: stem quadrangular and frequently branched, 2-50 cm long, 2-5 mm in diameter, nodes slightly swollen. Leaves with petiole short or nearly sessile, lanceolate to ovate-lanceolate, the apex acuminate, the base cuneate-decurrent, and the margins entire to undulate; the upper surface green, the lower surface greyish green, glabrous on both surfaces (2) Milled: Coarse green/grey powder
Anatomy/Morphology	Microscopy (acidified chloral hydrate glycerol solution)	(1) (400x)- non-glandular hairs with cuticular striations (2) (400x)- leaf epidermis with stomata
HP-TLC	See HP-TLC conditions	Conforms

STORAGE CONDITIONS

STORAGE 20-30 °C; Dry storage area; Insect free; Volatile free

EXPIRATION DATE 08/2027 under the above conditions

This document is the property of ChromaDex, Inc. and/or its relevant affiliates and contains confidential and proprietary material for the sole use of the intended recipient(s). Any review, use, distribution, or disclosure by or to others is strictly prohibited.

MACROSCOPY

(1)

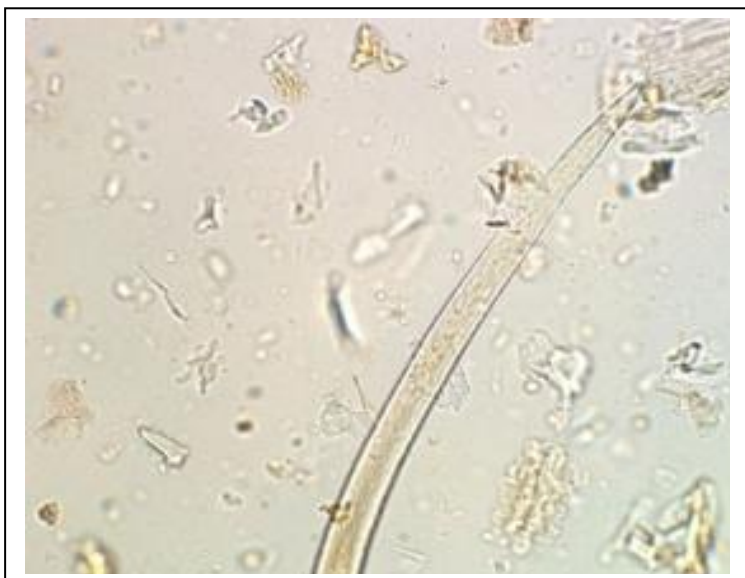


(2)

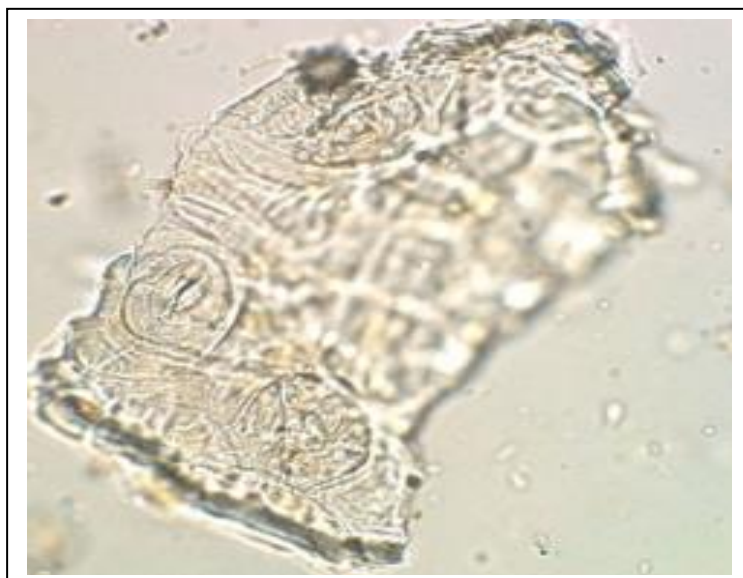


MICROSCOPY

(1)



(2)



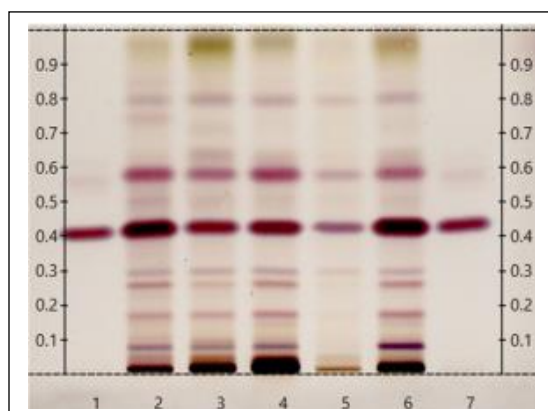
This document is the property of ChromaDex, Inc. and/or its relevant affiliates and contains confidential and proprietary material for the sole use of the intended recipient(s). Any review, use, distribution, or disclosure by or to others is strictly prohibited.

HP-TLC CONDITIONS

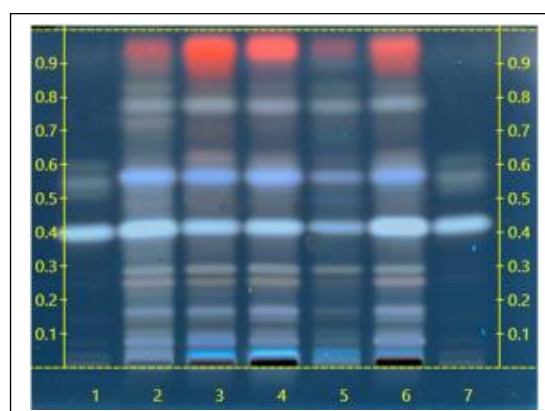
STATIONARY PHASE	Silica gel 60, HPTLC plates
SAMPLE PREPARATION	0.3 g + 3 mL Methanol, sonicate/heat at 50 °C for 30 min.
MOBILE PHASE	Chloroform: Methanol [10.5/1.5]
DETECTION	(1) 10% Sulfuric, 100 °C, 2 min, Visible light (2) 10% Sulfuric, 100 °C, 2 min, UV 366 nm

HP-TLC PLATES

HP-TLC (1)



HP-TLC (2)



HP-TLC LANE APPLICATIONS

Lane	ID	Lane	ID
1	Andrographolide (3 µL)	5	<i>Andrographis paniculata</i> VBRM (3 µL)
2	<i>Andrographis paniculata</i> (Leaf) (3 µL)	6	<i>Andrographis paniculata</i> (aerial part) (3 µL)
3	<i>Andrographis paniculata</i> (aerial part) (3 µL)	7	Andrographolide (3 µL)
4	NA		

REVISION HISTORY

Revision History	Date of Revision	Document/Changes
00	09/01/2022	New report

This document is the property of ChromaDex, Inc. and/or its relevant affiliates and contains confidential and proprietary material for the sole use of the intended recipient(s). Any review, use, distribution, or disclosure by or to others is strictly prohibited.