

<b>PRODUCT</b>	<i>Cinnamomum burmannii</i> (Cinnamon) Bark
<b>PART NUMBER</b>	00031018
<b>REFERENCE TYPE</b>	Biomass Reference Material (BRM) *
<b>LOT NUMBER</b>	00031018-514
<b>COMMON NAME</b>	Cinnamon
<b>LATIN NAME</b>	<i>Cinnamomum burmannii</i> (Nees & T. Nees) Blume [Lauraceae]
<b>PLANT PART</b>	Bark
<b>CDXP NUMBER</b>	CDXP-20-00514
<b>REPORT NUMBER</b>	CDXA-BRM-194-00
<b>DATE OF SAMPLE</b>	07/08/2020
<b>DATE OF REPORT</b>	08/13/2020

\*Note – Biomass Reference Material (BRM) is not a voucher specimen

## ANALYTICAL RESULTS

TEST	METHOD	RESULT
Appearance	Macroscopy	(1 and 2) Whole/Cut: bark channeled or quilled, outer surface greyish-brown, slightly rough, with irregular fine wrinkles and transverse protruding lenticels, some showing greyish-white streaks; inner surface reddish-brown, somewhat even with fine longitudinal striations and exhibiting oil trace on scratching
Anatomy/ Morphology	Microscopy (acidified chloral hydrate glycerol solution)	(1) Whole/Cut: cells containing prismatic crystals (400x) (2) Milled: prismatic crystal plate (400x) (3) Milled: colorless, thick-walled fibers with tapering ends (200x)
HP-TLC	See HP-TLC conditions	Conforms

## STORAGE CONDITIONS

<b>STORAGE</b>	20-30 °C; Dry storage area; Insect free; Volatile free
<b>EXPIRATION DATE</b>	07/2025 under the above conditions

This document is the property of ChromaDex, Inc. and/or its relevant affiliates and contains confidential and proprietary material for the sole use of the intended recipient(s). Any review, use, distribution, or disclosure by or to others is strictly prohibited.

**MACROSCOPY**

(1)



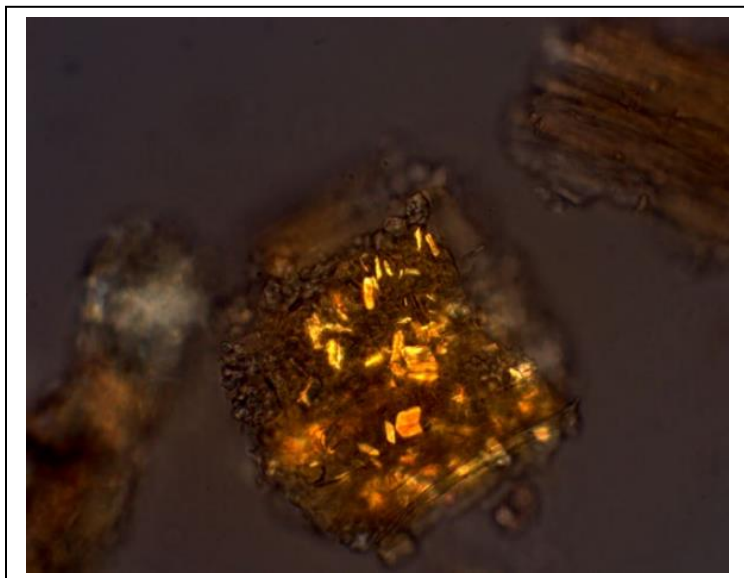
(2)



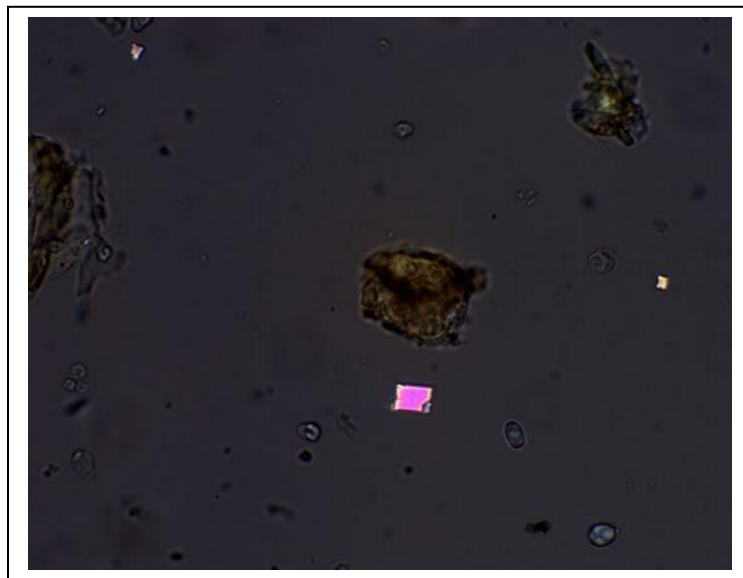
This document is the property of ChromaDex, Inc. and/or its relevant affiliates and contains confidential and proprietary material for the sole use of the intended recipient(s). Any review, use, distribution, or disclosure by or to others is strictly prohibited.

**MICROSCOPY**

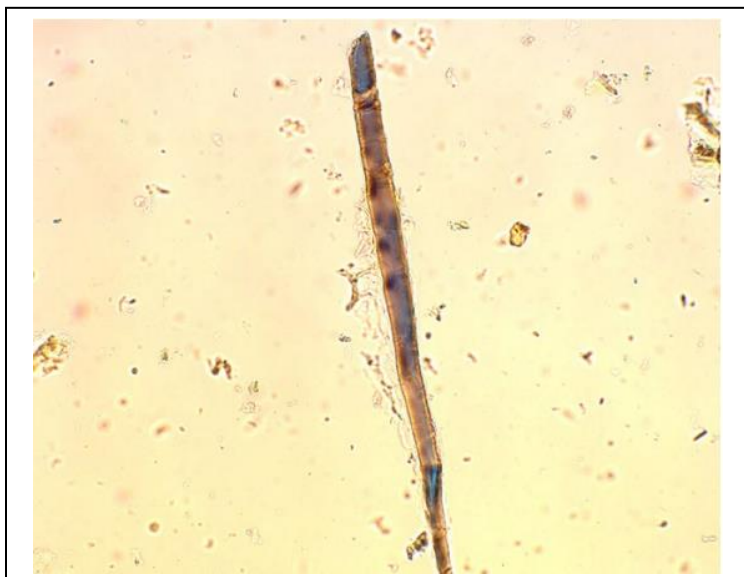
(1)



(2)



(3)



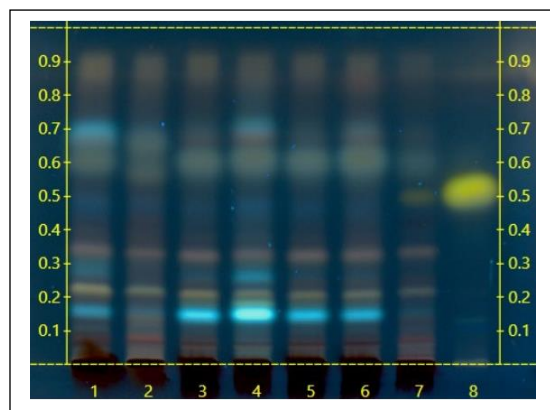
This document is the property of ChromaDex, Inc. and/or its relevant affiliates and contains confidential and proprietary material for the sole use of the intended recipient(s). Any review, use, distribution, or disclosure by or to others is strictly prohibited.

**HP-TLC CONDITIONS**

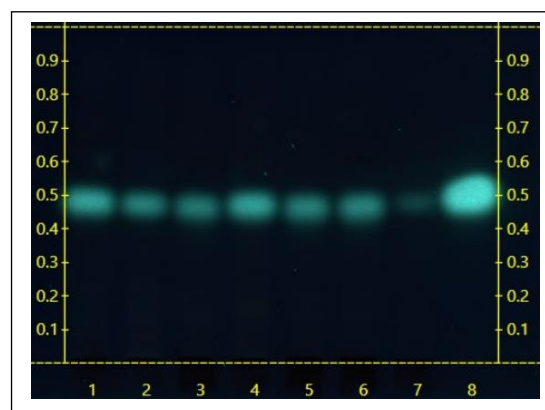
<b>STATIONARY PHASE</b>	Silica gel 60, HPTLC plates
<b>SAMPLE PREPARATION</b>	0.3 g + 3 mL Methanol, sonicate/heat at 50 °C for 30 min.
<b>MOBILE PHASE</b>	Toluene/ Methanol [9/1]
<b>DETECTION</b>	(1) Vanillin/Sulfuric, 110 °C, 2 min, 366 nm (2) 10% Potassium hydroxide, 366 nm

**HP-TLC PLATES**

HP-TLC (1)



HP-TLC (2)


**HP-TLC LANE APPLICATIONS**

Lane	ID	Lane	ID
1	<i>Cinnamomum burmannii</i> bark (6 µL)	5	N/A
2	<i>Cinnamomum aromaticum</i> / <i>Cinnamomum cassia</i> bark (6 µL)	6	N/A
3	<i>Cinnamomum burmannii</i> BRM (6 µL)	7	<i>Cinnamomum verum</i> bark (6 µL)
4	<i>Cinnamomum burmannii</i> BRM (6 µL)	8	†-Cinnamaldehyde, Coumarin, Eugenol (3 µL)

**REVISION HISTORY**

Revision History	Date of Revision	Document/Changes
00	08/13/2020	New report