

PRODUCT	<i>Polygonum cuspidatum</i> (Japanese Knotweed) Rhizome
PART NUMBER	00031012
REFERENCE TYPE	Biomass Reference Material (BRM) *
LOT NUMBER	00031012-Z17
COMMON NAME	Japanese Knotweed
LATIN NAME	<i>Polygonum cuspidatum</i> Siebold & Zucc. [Polygonaceae]
PLANT PART	Rhizome
SAMPLE NUMBER	CDXA-18-00412
REPORT NUMBER	CDXA-BRM-189-01
DATE OF SAMPLE	05/02/2018
DATE OF REEVALUATION	04/13/2022
DATE OF REPORT	05/05/2022

*Note – Biomass Reference Material (BRM) is not a voucher specimen

ANALYTICAL RESULTS

TEST	METHOD	RESULT
Appearance	Macroscopy	(1) Whole/Cut: Cross sections of tan wood with brown bark (2) Milled: Golden powder
Anatomy/Morphology	Microscopy	(1) Room central xylem showing vessels with bordered pits (2) Root cork
HP-TLC	See HP-TLC conditions	Conforms

STORAGE CONDITIONS

STORAGE	20-30 °C; Dry storage area; Insect free; Volatile free
EXPIRATION DATE	04/2027 under the above conditions

This document is the property of ChromaDex, Inc. and/or its relevant affiliates and contains confidential and proprietary material for the sole use of the intended recipient(s). Any review, use, distribution, or disclosure by or to others is strictly prohibited.

MACROSCOPY

(1)

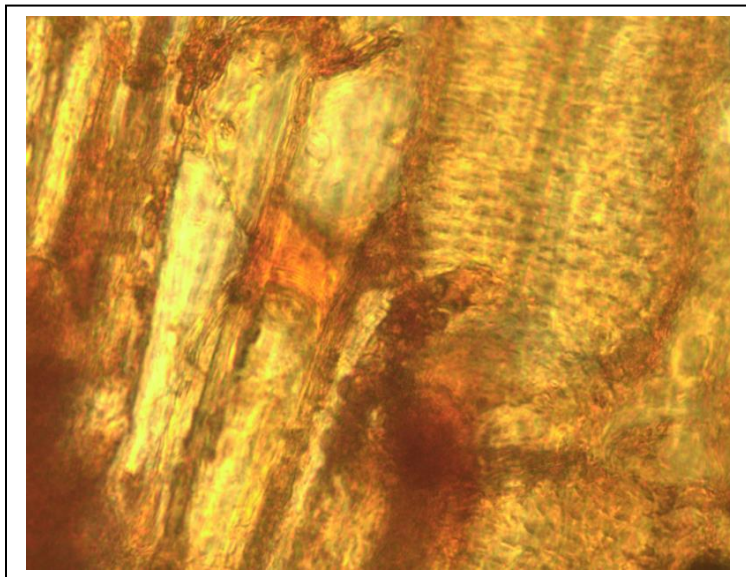


(2)

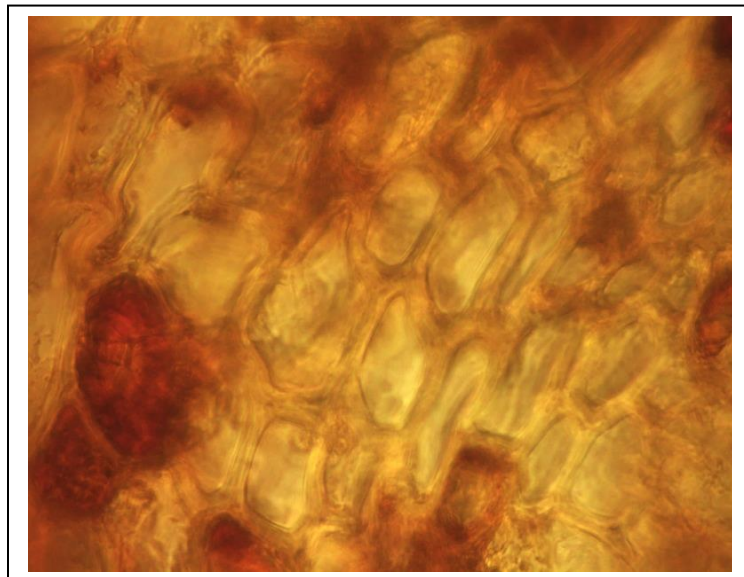


MICROSCOPY

(1)



(2)



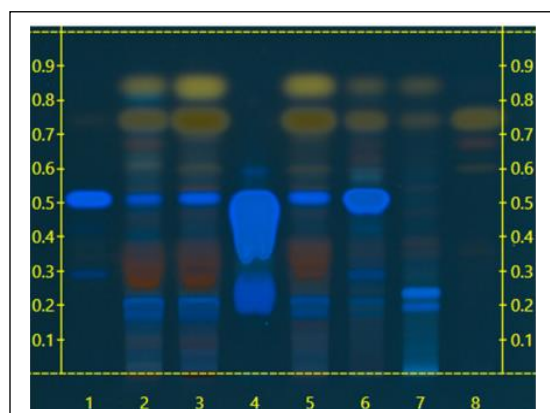
This document is the property of ChromaDex, Inc. and/or its relevant affiliates and contains confidential and proprietary material for the sole use of the intended recipient(s). Any review, use, distribution, or disclosure by or to others is strictly prohibited.

HP-TLC CONDITIONS

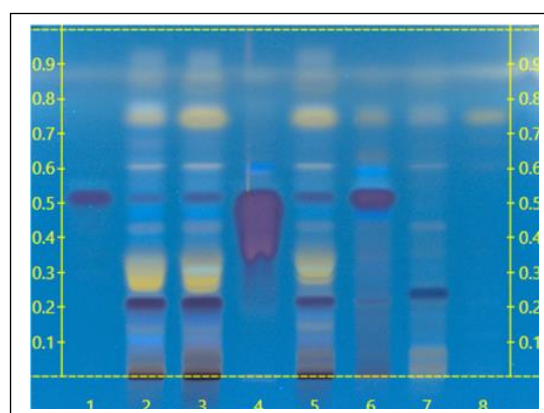
STATIONARY PHASE	Silica gel 60, HPTLC plates
SAMPLE PREPARATION	0.3 g + 3 mL Methanol, sonicate/heat at 50 °C for 30 min.
MOBILE PHASE	Toluene: Ethanol: Acetic acid: develop to 3.5 cm: [8/6/1] Toluene: Ethanol: develop to mark [8/2]
DETECTION	(1) UV 366 nm (2) Vanillin/Sulfuric, 110°C, 2min, UV 366 nm

HP-TLC PLATES

HP-TLC (1)



HP-TLC (2)



HP-TLC LANE APPLICATIONS

Lane	ID	Lane	ID
1	Resveratrol (3 µL)	5	<i>Polygonum cuspidatum</i> BRM (3 µL)
2	<i>Polygonum cuspidatum</i> Rhizome (3 µL)	6	NA
3	<i>Polygonum cuspidatum</i> Root & Rhizome (3 µL)	7	<i>Polygonum multiflorum</i> Root (3 µL)
4	NA	8	Emodin (3 µL)

REVISION HISTORY

Revision History	Date of Revision	Document/Changes
00	08/10/2018	New report
01	05/05/2022	Material passed reevaluation by HP-TLC. Updated expiration date and template.

This document is the property of ChromaDex, Inc. and/or its relevant affiliates and contains confidential and proprietary material for the sole use of the intended recipient(s). Any review, use, distribution, or disclosure by or to others is strictly prohibited.