

PRODUCT	<i>Sambucus nigra</i> (European Elder) Fruit
PART NUMBER	00030922
REFERENCE TYPE	Biomass Reference Material (BRM) *
LOT NUMBER	00030922-316
COMMON NAME	European Elder
LATIN NAME	<i>Sambucus nigra</i> L. [Viburnaceae]
PLANT PART	Fruit
SAMPLE NUMBER	CDXP-22-00295
REPORT NUMBER	CDXA-BRM-225-00
DATE OF SAMPLE	04/18/2022
DATE OF REPORT	05/16/2022

*Note – Biomass Reference Material (BRM) is not a voucher specimen

ANALYTICAL RESULTS

TEST	METHOD	RESULT
Appearance	Macroscopy	(1) Whole/Cut: Fruit globose, black, 5-6 mm in diameter, pyrenes oblong, 3.5 mm long, surface rugose. (2) Milled: Coarse black powder.
Anatomy/Morphology	Microscopy (Acidified chloral hydrate glycerol solution)	(1) Fragment of epidermis with beaded thickening and coarse cuticular striations (400x). (2) Thickened fibers with sharp, rounded, or irregularly forked ends (400x).
HP-TLC	See HP-TLC conditions	Conforms

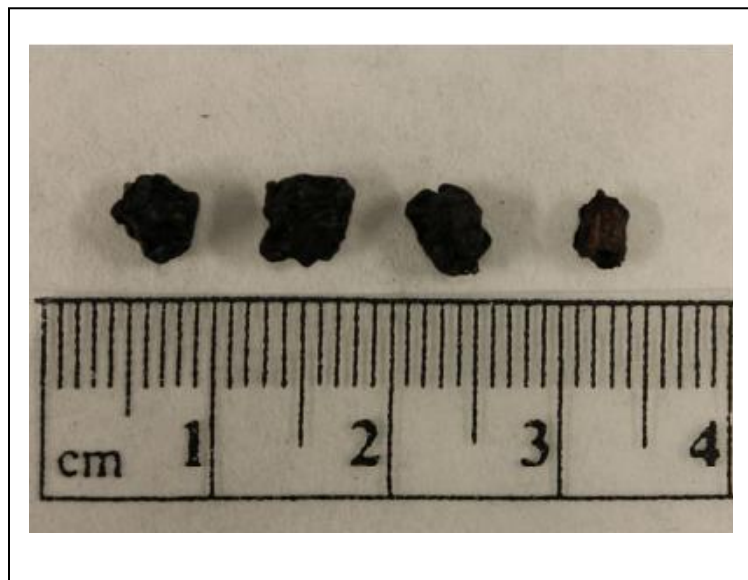
STORAGE CONDITIONS

STORAGE	20-30 °C; Dry storage area; Insect free; Volatile free
EXPIRATION DATE	04/2027 under the above conditions

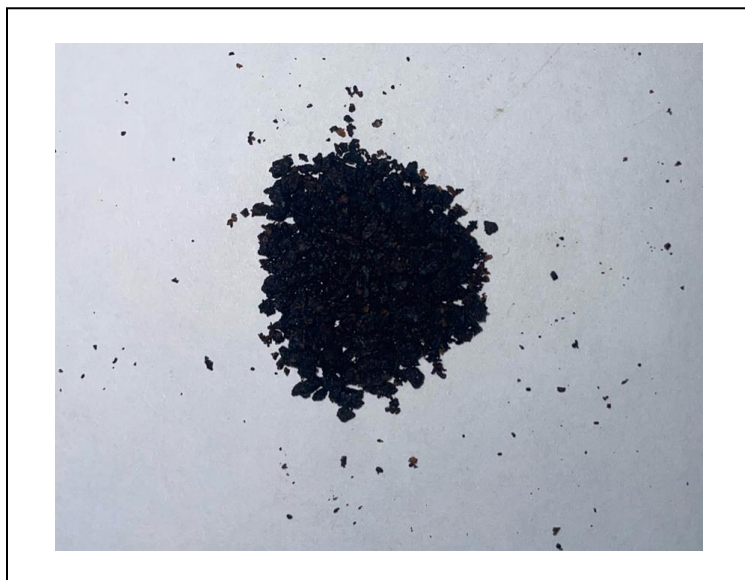
This document is the property of ChromaDex, Inc. and/or its relevant affiliates and contains confidential and proprietary material for the sole use of the intended recipient(s). Any review, use, distribution, or disclosure by or to others is strictly prohibited.

MACROSCOPY

(1)

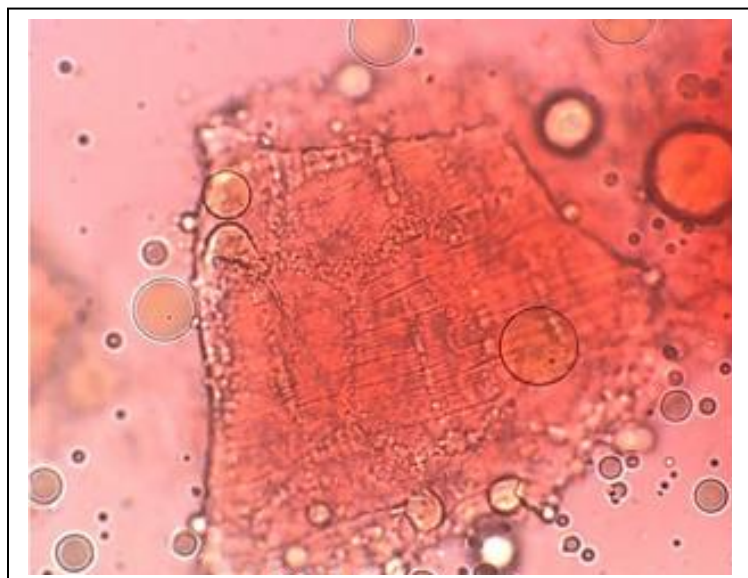


(2)

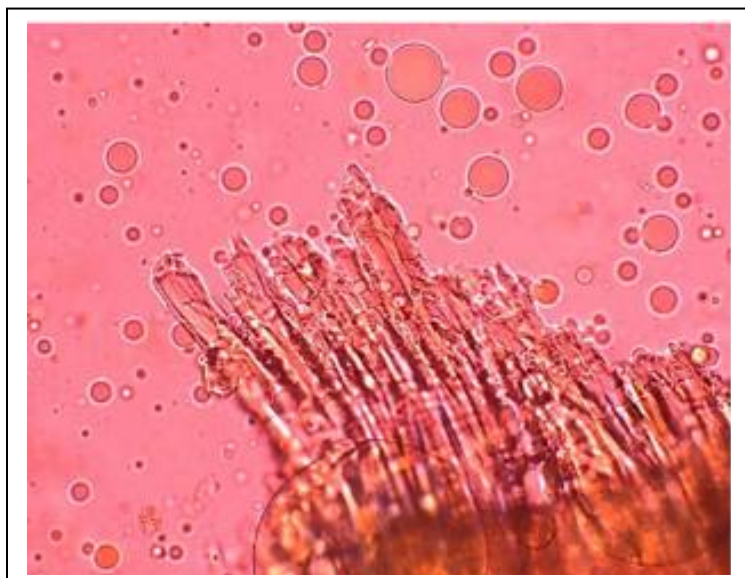


MICROSCOPY

(1)



(2)



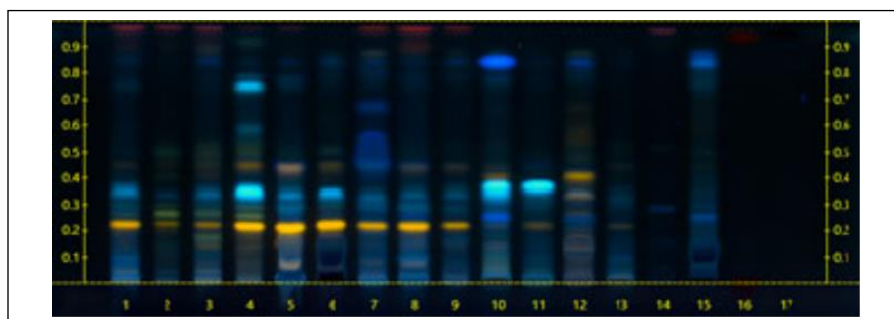
This document is the property of ChromaDex, Inc. and/or its relevant affiliates and contains confidential and proprietary material for the sole use of the intended recipient(s). Any review, use, distribution, or disclosure by or to others is strictly prohibited.

HP-TLC CONDITIONS

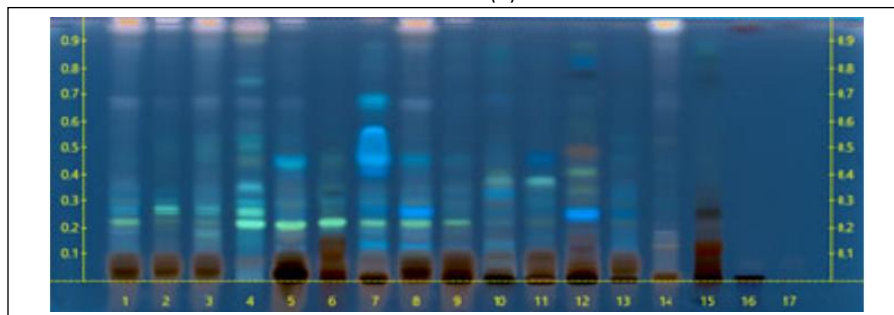
STATIONARY PHASE	Silica gel 60, HPTLC plates
SAMPLE PREPARATION	0.3 g + 3 mL Methanol, sonicate/heat at 50 °C for 30 min.
MOBILE PHASE	Ethyl acetate/ formic acid/ acetic acid/ Milli-Q water [10/0.9/0.9/2]
DETECTION	(1) Natural Product + Polyethylene Glycol, 366nm (2) 10% Sulfuric, 100°C, 2min, 366nm

HP-TLC PLATES

HP-TLC (1)



HP-TLC (2)



HP-TLC LANE APPLICATIONS

Lane	ID	Lane	ID
1	<i>Sambucus canadensis</i> (fruit) (3 µL)	10	<i>Aronia melanocarpa</i> (fruit) (3 µL)
2	<i>Sambucus cerulea</i> (fruit) (3 µL)	11	<i>Prunus avium</i> (fruit) (5 µl)
3	<i>Sambucus ebulus</i> (fruit) (3 µL)	12	<i>Vaccinium marocarpon</i> (fruit) (5 µl)
4	<i>Sambucus nigra</i> (flower) (1 µL)	13	<i>Morus nigra</i> (fruit) (3 µl)
5	<i>Sambucus nigra</i> (fruit) (3 µL)	14	<i>Glycine max</i> (bean) (3 µL)
6	<i>Sambucus nigra</i> (fruit) (0.5 µL)	15	<i>Oryza sativa</i> (grain) (0.5 µL)
7	NA	16	NA
8	<i>Sambucus nigra</i> BRM (5 µL)	17	NA
9	NA		

This document is the property of ChromaDex, Inc. and/or its relevant affiliates and contains confidential and proprietary material for the sole use of the intended recipient(s). Any review, use, distribution, or disclosure by or to others is strictly prohibited.

REVISION HISTORY

<u>Revision History</u>	<u>Date of Revision</u>	<u>Document/Changes</u>
00	05/16/2022	New report

This document is the property of ChromaDex, Inc. and/or its relevant affiliates and contains confidential and proprietary material for the sole use of the intended recipient(s). Any review, use, distribution, or disclosure by or to others is strictly prohibited.