

PRODUCT	Morinda citrifolia (Noni) Fruit
PART NUMBER	00030846
REFERENCE TYPE	Biomass Reference Material (BRM) *
LOT NUMBER	00030846-421
COMMON NAME	Noni
LATIN NAME	Morinda citrifolia L. [Rubiaceae]
PLANT PART	Fruit
SAMPLE NUMBER	CDXP-21-00003
REPORT NUMBER	CDXA-BRM-198-00
DATE OF SAMPLE	01/05/2021
DATE OF REPORT	02/01/2021

*Note – Biomass Reference Material (BRM) is not a voucher specimen

ANALYTICAL RESULTS

TEST	METHOD	RESULT
Appearance	Macroscopy	(1,2) Whole/Cut: fruit ovoid to subglobose, 2.5-5 cm diameter (3) Milled: Brown powder
Anatomy/Morphology	Microscopy (400x - acidified chloral hydrate glycerol solution)	(1) acicular calcium oxalate crystals
HP-TLC	See HP-TLC conditions	Conforms

STORAGE CONDITIONS

STORAGE	20-30 °C; Dry storage area; Insect free; Volatile free
EXPIRATION DATE	01/2026 under the above conditions

This document is the property of ChromaDex, Inc. and/or its relevant affiliates and contains confidential and proprietary material for the sole use of the intended recipient(s). Any review, use, distribution, or disclosure by or to others is strictly prohibited.

MACROSCOPY

(1)



(2)

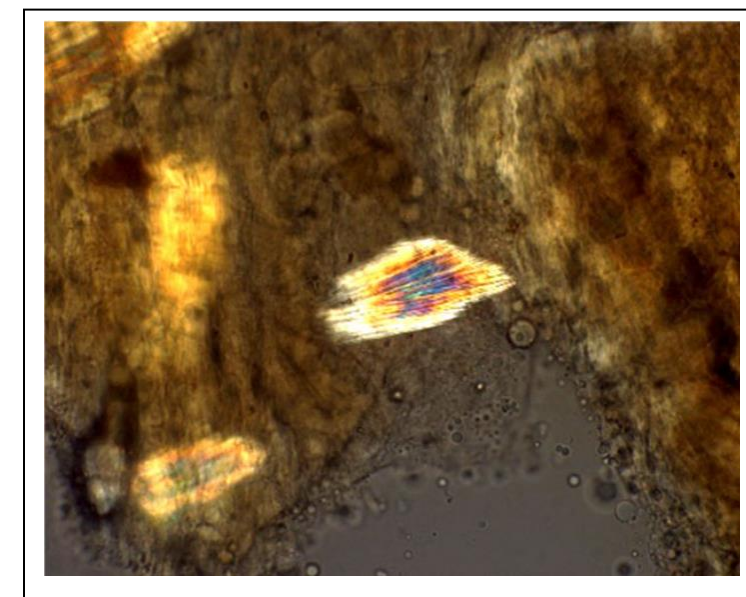


MICROSCOPY

(3)



(1)



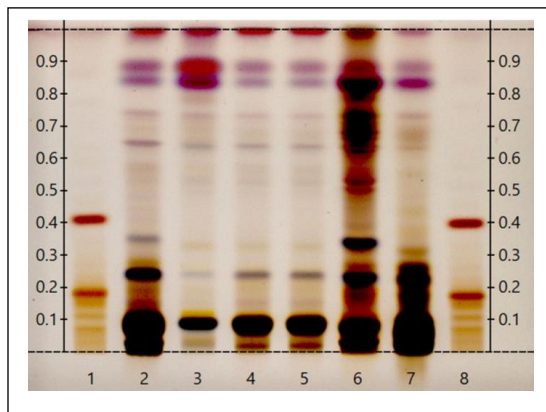
This document is the property of ChromaDex, Inc. and/or its relevant affiliates and contains confidential and proprietary material for the sole use of the intended recipient(s). Any review, use, distribution, or disclosure by or to others is strictly prohibited.

HP-TLC CONDITIONS

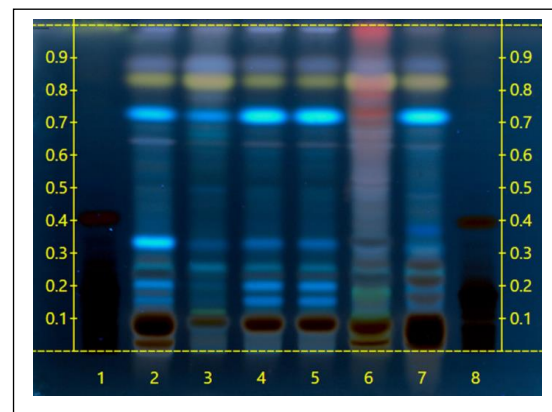
STATIONARY PHASE	Silica gel 60, HPTLC plates
SAMPLE PREPARATION	0.3 g + 3 mL Methanol, sonicate/heat at 50 °C for 30 min.
MOBILE PHASE	Chloroform/ Methanol/ Formic acid/ Water [6/2/1.4/0.1]
DETECTION	(1) 10% Sulfuric, 100°C, 2min, Visible light (2) 10% Sulfuric, 100°C, 2min, 366nm

HP-TLC PLATES

HP-TLC (1)



HP-TLC (2)



HP-TLC LANE APPLICATIONS

Lane	ID	Lane	ID
1	Epigallocatechin (3 µL)	5	Morinda citrifolia fruit BRM (3 µL)
2	Morinda citrifolia (fruit) (3 µL)	6	Morinda citrifolia (leaf) (3 µL)
3	Morinda citrifolia (fruit) (3 µL)	7	Morinda citrifolia (pulp) (3 µL)
4	Morinda citrifolia BRM (3 µL)	8	Epigallocatechin (3 µL)

REVISION HISTORY

Revision History	Date of Revision	Document/Changes
00	02/01/2021	New report