

<b>PRODUCT</b>	<i>Bacopa monnieri</i> (Bacopa) Whole plant
<b>PART NUMBER</b>	00030842
<b>REFERENCE TYPE</b>	Biomass Reference Material (VBRM) *
<b>LOT NUMBER</b>	00030842-197
<b>COMMON NAME</b>	Bacopa
<b>LATIN NAME</b>	<i>Bacopa monnieri</i> L. Pennell. [Scrophulariaceae]
<b>PLANT PART</b>	Whole plant
<b>CDXA NUMBER</b>	CDXA-07-1565
<b>REPORT NUMBER</b>	CDXA-VBRMR-016-05
<b>DATE OF SAMPLE</b>	06/27/2007
<b>DATE OF RE-EVALUATION</b>	01/25/2012 (1 <sup>st</sup> ); 04/21/2016 (2 <sup>nd</sup> ); 04/16/2020 (3 <sup>rd</sup> )
<b>DATE OF REPORT</b>	06/08/2020

\*Note – Vouchered (V) BRM is a voucher specimen

A full-size color voucher copy may be purchased by contacting the ChromaDex sales office



## ANALYTICAL RESULTS

TEST	METHOD	RESULT
Appearance	Macroscopy	(1) Whole/Cut: Brown fragments of herb Milled: Grey/brown powder
Anatomy/Morphology	Microscopy	(1) Epidermis of leaf showing lignified base of a large glandular trichome. (2) Vascular tissue seen within the mesophyll of the leaf showing no distinct midrib.
HP-TLC	CDXA-TLCM-178-01	Conforms

## STORAGE CONDITIONS

<b>STORAGE</b>	20-30 °C; Dry storage area; Insect free; Volatile free
<b>EXPIRATION DATE</b>	04/2025 under the above conditions

This document is the property of ChromaDex, Inc. and/or its relevant affiliates and contains confidential and proprietary material for the sole use of the intended recipient(s). Any review, use, distribution or disclosure by or to others is strictly prohibited.

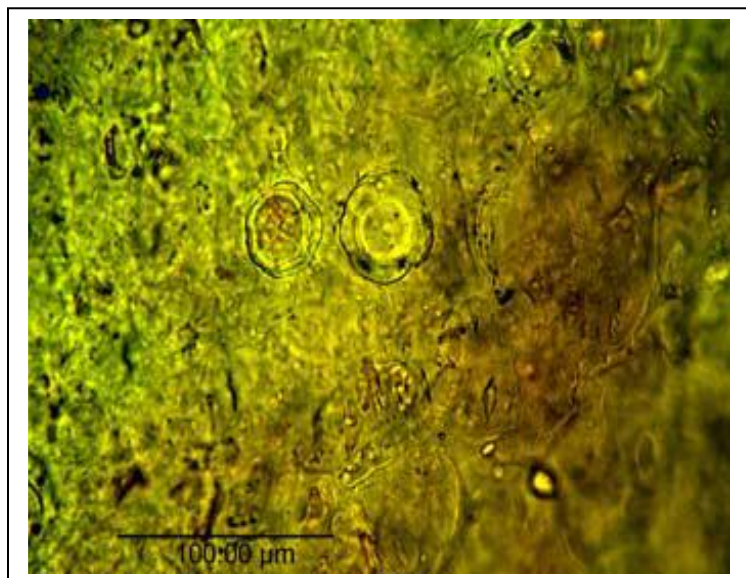
## MACROSCOPY

(1)

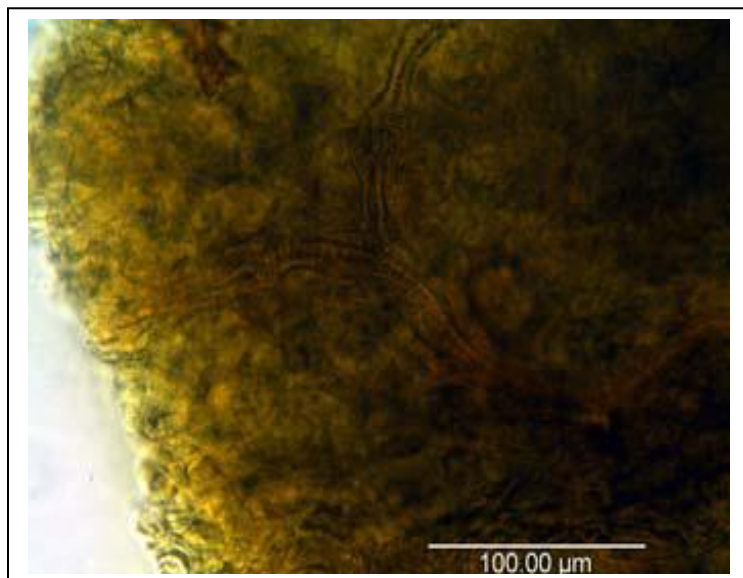


## MICROSCOPY

(1)



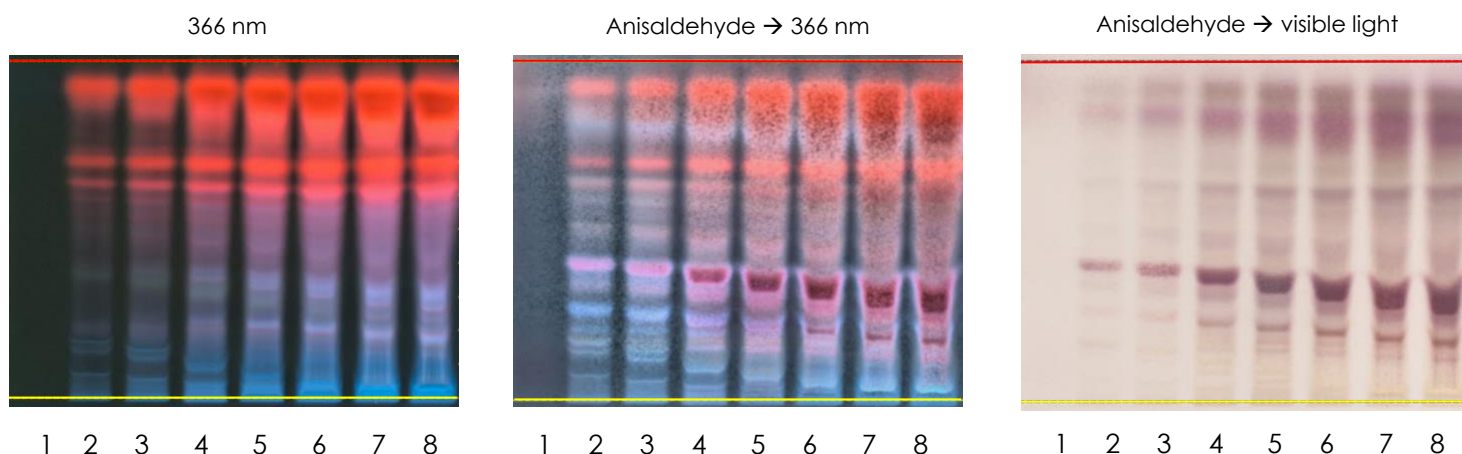
(2)



## HP-TLC CONDITIONS

<b>STATIONARY PHASE</b>	Silica gel 60, F <sub>254</sub> , 10 x 10 cm HP-TLC plates
<b>SAMPLE PREPARATION</b>	~0.5 g + 5 mL methanol, sonicated in hot water bath for ~10 minutes.
<b>MOBILE PHASE</b>	Ethyl acetate/ methanol/ Milli-Q water [7/2/1]
<b>CHAMBER TEMPERATURE</b>	Ambient
<b>DETECTION</b>	(1) UV 366 nm (2) Anisaldehyde spray reagent → UV 366 nm (3) Anisaldehyde spray reagent → visible light

## HP-TLC PLATES



YELLOW LINE = SAMPLE ORIGIN  
RED LINE = SOLVENT FRONT @ 70 mm

## HP-TLC LANE APPLICATIONS

Lane	ID	Lane	ID
1	MeOH blank (2 µL)	5	<i>Bacopa monnieri</i> (6 µL)
2	<i>Bacopa monnieri</i> (1 µL)	6	<i>Bacopa monnieri</i> (8 µL)
3	<i>Bacopa monnieri</i> (2 µL)	7	<i>Bacopa monnieri</i> (10 µL)
4	<i>Bacopa monnieri</i> (4 µL)	8	<i>Bacopa monnieri</i> (12 µL)

**REVISION HISTORY**

<u>Revision History</u>	<u>Date of Revision</u>	<u>Document/Changes</u>
00	08/01/2007	New report
01	09/07/2010	Reformat
02	01/25/2012	Passed re-evaluation; updated expiration date; general template update; updated TLC pictures; updated common name; updated TLC method; changed chemical reference standard.
03	01/15/2014	General template update; updated macroscopy and microscopy pictures for clarity.
04	04/26/2016	Passed re-evaluation; updated expiration date; general template update; updated TLC pictures; updated TLC method; added a chemical reference standard.
05	06/08/2020	Material passed reevaluation by HPTLC. Updated template, expiration date, HPTLC conditions, lane assignments, and plate images.

This document is the property of ChromaDex, Inc. and/or its relevant affiliates and contains confidential and proprietary material for the sole use of the intended recipient(s). Any review, use, distribution or disclosure by or to others is strictly prohibited.