

PRODUCT	<i>Crataegus laevigata</i> (Hawthorn) Berries
PART NUMBER	00030834
REFERENCE TYPE	Biomass Reference Material (VBRM) *
LOT NUMBER	00030834-532
COMMON NAME	Hawthorn
LATIN NAME	<i>Crataegus laevigata</i> (Poir.) DC. [Rosaceae]
PLANT PART	Berries
SAMPLE NUMBER	CDXA-14-7185
REPORT NUMBER	CDXA-VBRM-169-01
DATE OF SAMPLE	11/21/2014
DATE OF REPORT	05/03/2022



***Note** – Vouchered (V) BRM is a voucher specimen

A full-size color voucher copy may be purchased by contacting the ChromaDex sales office

ANALYTICAL RESULTS

TEST	METHOD	RESULT
Appearance	Macroscopy	(1) Whole/Cut: Round dark purple berries 0.5-1 cm in length and 0.5 cm in width with small stems and concave bottoms some with 5 sepals. (2) Milled: Bronze coarse powder with flecks of dark purple.
Anatomy/Morphology	Microscopy	(1) (200x) Thick walled trichome under polar filter. (2) (50x) Large prisms of calcium oxalate under polar filter.
HP-TLC	See HP-TLC conditions	Conforms

STORAGE CONDITIONS

STORAGE	20-30 °C; Dry storage area; Insect free; Volatile free
EXPIRATION DATE	11/2029 under the above conditions

This document is the property of ChromaDex, Inc. and/or its relevant affiliates and contains confidential and proprietary material for the sole use of the intended recipient(s). Any review, use, distribution, or disclosure by or to others is strictly prohibited.

MACROSCOPY

(1)

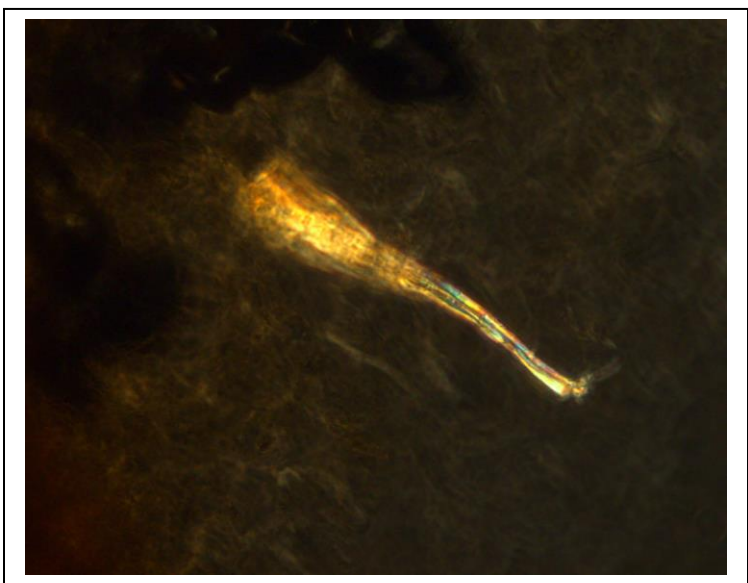


(2)

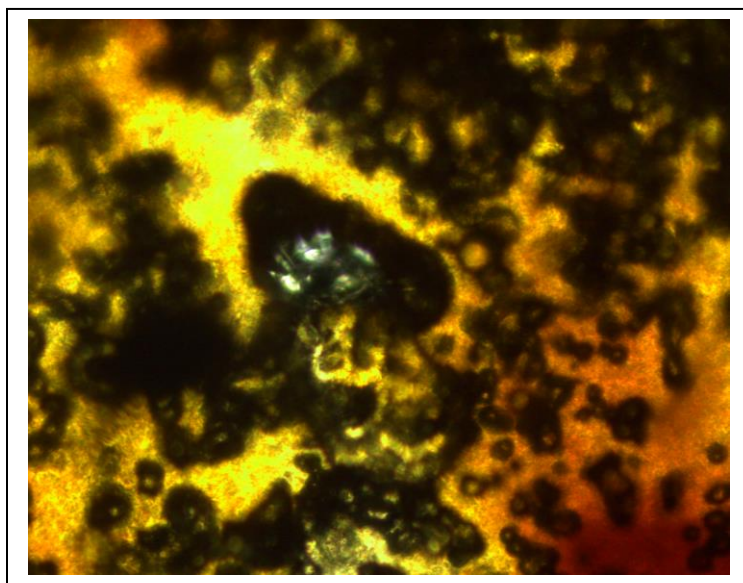


MICROSCOPY

(1)



(2)



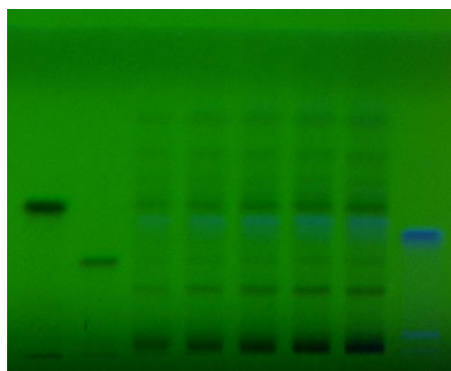
This document is the property of ChromaDex, Inc. and/or its relevant affiliates and contains confidential and proprietary material for the sole use of the intended recipient(s). Any review, use, distribution, or disclosure by or to others is strictly prohibited.

HP-TLC CONDITIONS

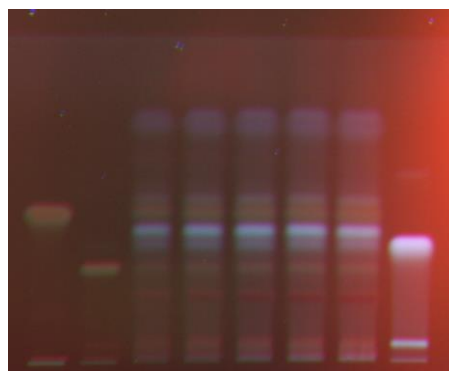
STATIONARY PHASE	Silica gel 60, F ₂₅₄ , 10 x 10 cm HP-TLC plates
SAMPLE PREPARATION	0.5 g + 5 mL methanol, sonicated in hot water bath for ~10 minutes.
MOBILE PHASE	Ethyl acetate/ formic acid/ acetic acid/ Milli-Q water [10/1.1/1.1/2.6]
CHAMBER TEMPERATURE	Ambient
DETECTION	(1) UV 254 nm (2) UV 365 nm (3) Natural Products spray reagent → UV 365 nm

HP-TLC PLATES

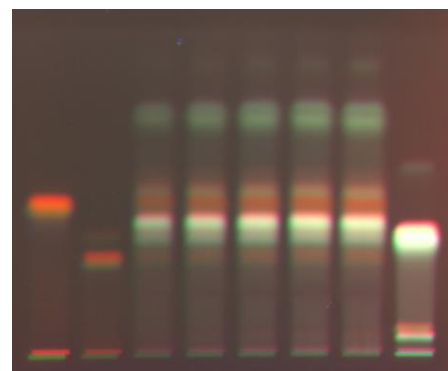
HP-TLC (1)



HP-TLC (2)



HP-TLC (3)



YELLOW LINE = SAMPLE ORIGIN
RED LINE = SOLVENT FRONT @ 70MM

HP-TLC LANE APPLICATIONS

Lane	ID	Lane	ID
1	Hyperoside	5	<i>Crataegus laevigata</i> VBRM
2	Rutin	6	<i>Crataegus laevigata</i> VBRM
3	<i>Crataegus laevigata</i> VBRM	7	<i>Crataegus laevigata</i> VBRM
4	<i>Crataegus laevigata</i> VBRM	8	Chlorogenic Acid

This document is the property of ChromaDex, Inc. and/or its relevant affiliates and contains confidential and proprietary material for the sole use of the intended recipient(s). Any review, use, distribution, or disclosure by or to others is strictly prohibited.

REVISION HISTORY

<u>Revision History</u>	<u>Date of Revision</u>	<u>Document/Changes</u>
00	12/29/2014	New report
01	05/03/2022	Revised HPTLC image (3) description. Added milled image.

This document is the property of ChromaDex, Inc. and/or its relevant affiliates and contains confidential and proprietary material for the sole use of the intended recipient(s). Any review, use, distribution, or disclosure by or to others is strictly prohibited.