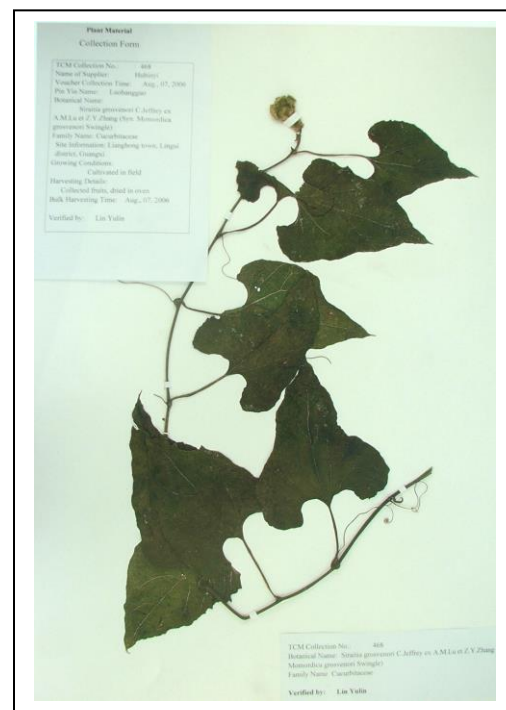


<b>PRODUCT</b>	<i>Siraitia grosvenorii</i> (Luo Han Guo) Fruit
<b>PART NUMBER</b>	00030827
<b>REFERENCE TYPE</b>	Biomass Reference Material (VBRM) *
<b>LOT NUMBER</b>	00030827-180
<b>COMMON NAME</b>	Luo Han Guo
<b>LATIN NAME</b>	<i>Siraitia grosvenorii</i> A.M. Lu & Zhi Y. Zhang [Cucurbitaceae]
<b>PLANT PART</b>	Fruit
<b>SAMPLE NUMBER</b>	CDXA-BRM-180
<b>REPORT NUMBER</b>	CDXA-VBRMR-054-02
<b>DATE OF SAMPLE</b>	05/29/2007
<b>DATE OF REEVALUATION</b>	03/07/2013 (1 <sup>st</sup> ); 04/28/2017 (2 <sup>nd</sup> ); 05/03/2021 (3 <sup>rd</sup> )
<b>DATE OF REPORT</b>	05/25/2021



**\*Note** – Vouchered (V) BRM is a voucher specimen

A full-size color voucher copy may be purchased by contacting the ChromaDex sales office

+

## ANALYTICAL RESULTS

TEST	METHOD	RESULT
Appearance	Macroscopy	(1) Whole/Cut: Brown flat seed with hard outer skin of fruit (2) Milled: Dark red-brown powder
Anatomy/Morphology	Microscopy	(1) Dark orange/red resin canals (2) Thick walled pitted sclereids
HP-TLC	See HP-TLC conditions	Conforms

## STORAGE CONDITIONS

<b>STORAGE</b>	20-30 °C; Dry storage area; Insect free; Volatile free
<b>EXPIRATION DATE</b>	05/2026 under the above conditions

This document is the property of ChromaDex, Inc. and/or its relevant affiliates and contains confidential and proprietary material for the sole use of the intended recipient(s). Any review, use, distribution, or disclosure by or to others is strictly prohibited.

## MACROSCOPY

(1)



(2)

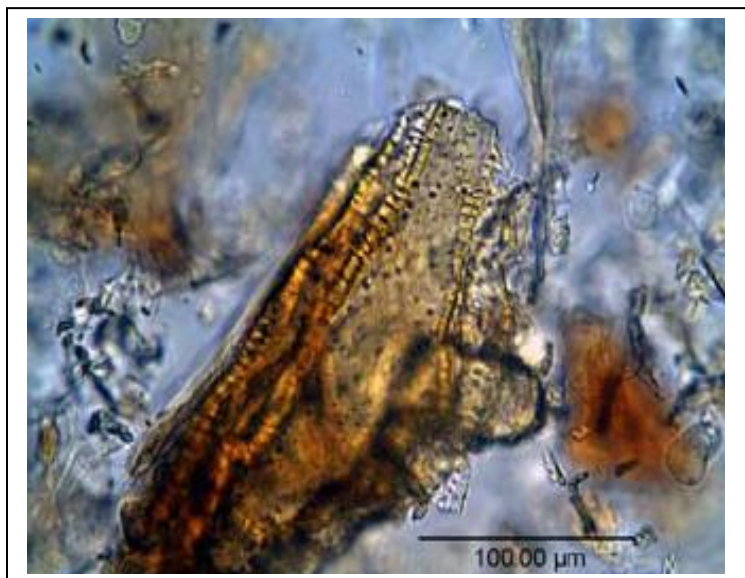


## MICROSCOPY

(1)



(2)



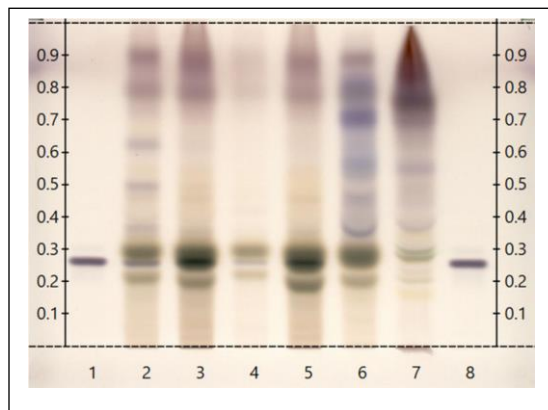
This document is the property of ChromaDex, Inc. and/or its relevant affiliates and contains confidential and proprietary material for the sole use of the intended recipient(s). Any review, use, distribution, or disclosure by or to others is strictly prohibited.

## HP-TLC CONDITIONS

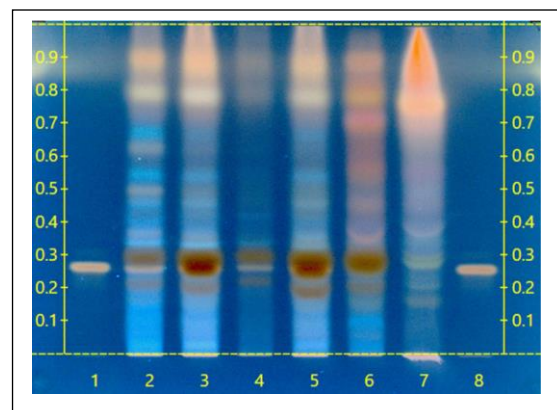
<b>STATIONARY PHASE</b>	Silica gel 60, HPTLC plates
<b>SAMPLE PREPARATION</b>	0.3 g + 3 mL Methanol, sonicate/heat at 50 °C for 30 min.
<b>MOBILE PHASE</b>	n-butanol/ ethanol/ water [8/2/3]
<b>DETECTION</b>	(1) Vanillin/Sulfuric, 110°C, 2 min, visible light (2) Vanillin/Sulfuric, 110°C, 2 min, 366 nm

## HP-TLC PLATES

HP-TLC (1)



HP-TLC (2)



## HP-TLC LANE APPLICATIONS

Lane	ID	Lane	ID
1	Mogroside V (3 µL)	5	<i>Siraitia grosvenorii</i> fruit VBRM (8 µL)
2	<i>Siraitia grosvenorii</i> fruit (3 µL)	6	<i>Momordica charantia</i> fruit (8 µL)
3	<i>Siraitia grosvenorii</i> fruit (3 µL)	7	<i>Momordica charantia</i> fruit (8 µL)
4	<i>Siraitia grosvenorii</i> fruit VBRM (8 µL)	8	Mogroside V (3 µL)

## REVISION HISTORY

Revision History	Date of Revision	Document/Changes
00	03/07/2013	New report
01	07/06/2017	Passed re-evaluation. Updated expiration date. Updated HP-TLC conditions, plate pictures, and detection.
02	05/25/2021	Material passed reevaluation by HP-TLC. Updated HP-TLC plates, conditions, plates, lane applications, and added image of ground material.

This document is the property of ChromaDex, Inc. and/or its relevant affiliates and contains confidential and proprietary material for the sole use of the intended recipient(s). Any review, use, distribution, or disclosure by or to others is strictly prohibited.