

PRODUCT	<i>Rosa canina</i> (Dog Rose) Fruit
PART NUMBER	00030792
REFERENCE TYPE	Biomass Reference Material (BRM) *
LOT NUMBER	00030792-473
COMMON NAME	Dog Rose
LATIN NAME	<i>Rosa canina</i> L. [Rosaceae]
PLANT PART	Fruit
SAMPLE NUMBER	CDXA-17-008441
REPORT NUMBER	CDXA-BRMR-146-02
DATE OF SAMPLE	06/26/2013
DATE OF REEVALUATION	07/24/2017 (1 st); 07/19/2021 (2 nd)
DATE OF REPORT	08/03/2021

*Note – Biomass Reference Material (BRM) is not a voucher specimen

ANALYTICAL RESULTS

TEST	METHOD	RESULT
Appearance	Macroscopy	(1) Whole/Cut: Dark Red dried fruit (2) Milled: orange and brown powder with chunks
Anatomy/Morphology	Microscopy	(1) Calcium-oxalate rosettes; 100x; polar filter (2) Unicellular thick-walled trichome; 100x; polar filter
HP-TLC	See HP-TLC conditions	Conforms

STORAGE CONDITIONS

STORAGE 20-30 °C; Dry storage area; Insect free; Volatile free

EXPIRATION DATE 07/2026 under the above conditions

This document is the property of ChromaDex, Inc. and/or its relevant affiliates and contains confidential and proprietary material for the sole use of the intended recipient(s). Any review, use, distribution, or disclosure by or to others is strictly prohibited.

MACROSCOPY

(1)

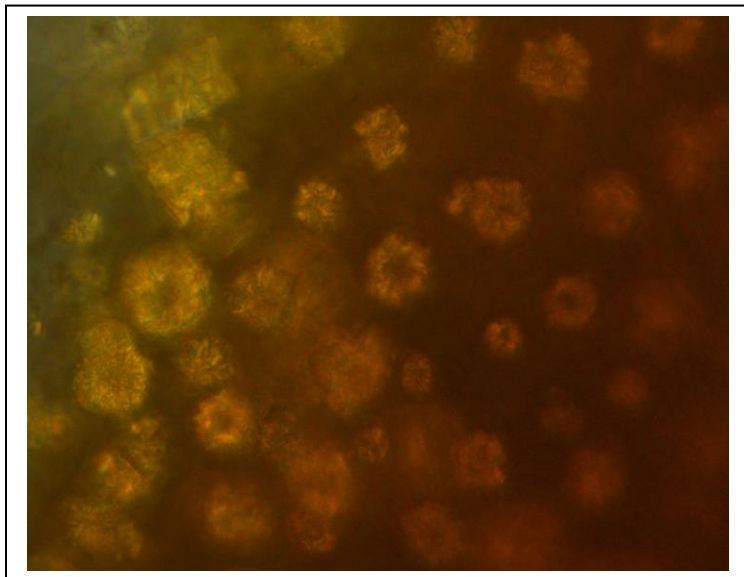


(2)

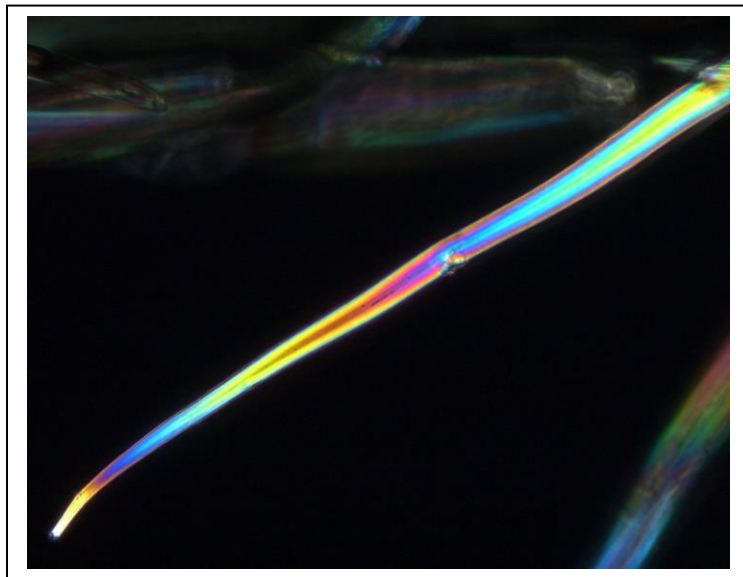


MICROSCOPY

(1)



(2)



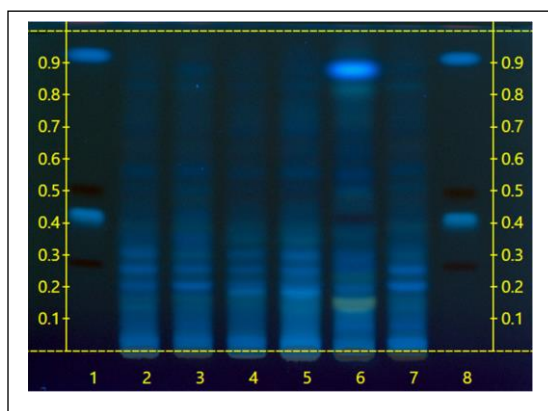
This document is the property of ChromaDex, Inc. and/or its relevant affiliates and contains confidential and proprietary material for the sole use of the intended recipient(s). Any review, use, distribution, or disclosure by or to others is strictly prohibited.

HP-TLC CONDITIONS

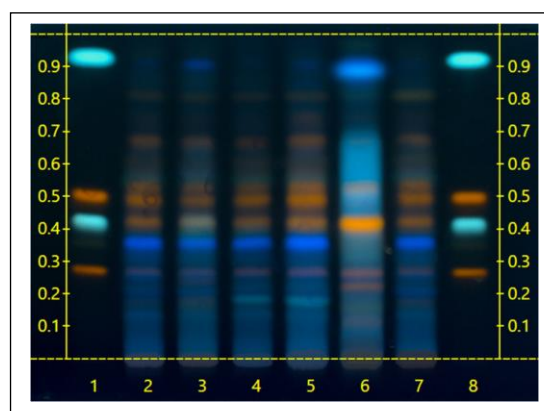
STATIONARY PHASE	Silica gel 60, HPTLC plates
SAMPLE PREPARATION	1g+10mL water, sonicate/heat at 50°C for 30 min. SPE condition with 5mL Methanol, equilibrate with 5mL water, load, dry, elute with 1 mL Methanol(2x)
MOBILE PHASE	Ethyl acetate/ formic acid/ acetic acid/ Milli-Q water [10/0.9/0.9/2]
DETECTION	(1) UV 366 nm (2) Natural Product + Polyethylene Glycol, 366nm

HP-TLC PLATES

HP-TLC (1)



HP-TLC (2)



HP-TLC LANE APPLICATIONS

Lane	ID	Lane	ID
1	Rutin, Hyperoside, Chlorogenic acid, Caffeic acid, Methanol (2 µL)	5	<i>Rosa canina</i> BRM (10 µL)
2	<i>Rosa canina</i> (fruit) (10 µL)	6	<i>Rosa laevigata</i> (fruit) (10 µL)
3	<i>Rosa canina</i> (fruit) (10 µL)	7	<i>Rosa rubiginosa</i> (fruit) (10 µL)
4	<i>Rosa canina</i> BRM (5 µL)	8	Rutin, Hyperoside, Chlorogenic acid, Caffeic acid, Methanol (2 µL)

REVISION HISTORY

Revision History	Date of Revision	Document/Changes
00	7/12/2013	New report
01	7/28/2017	Passed re-evaluation; updated expiration date; updated detection; general template update
02	08/03/2021	Material passed reevaluation by HP-TLC. Updated expiration date, template, HP-TLC method conditions, plates, and lane applications.

This document is the property of ChromaDex, Inc. and/or its relevant affiliates and contains confidential and proprietary material for the sole use of the intended recipient(s). Any review, use, distribution, or disclosure by or to others is strictly prohibited.