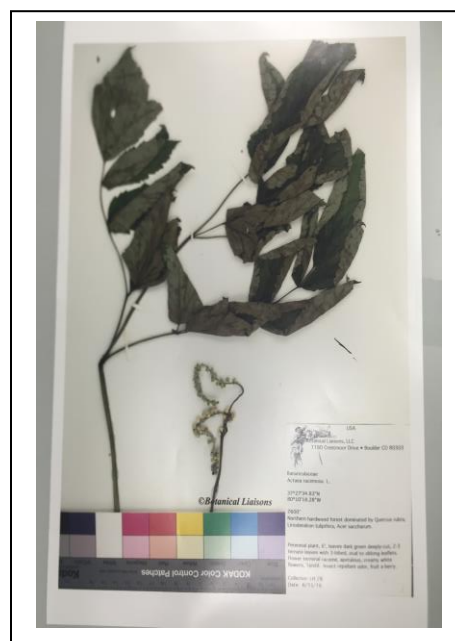


PRODUCT	Actaea racemosa (Black Cohosh) Root
PART NUMBER	00030771
REFERENCE TYPE	Biomass Reference Material (VBRM) *
LOT NUMBER	00030771-556
COMMON NAME	Black Cohosh
LATIN NAME	Actaea racemosa L. [Ranunculaceae]
PLANT PART	Root
CDXA NUMBER	CDXA-16-000592
REPORT NUMBER	CDXA-VBRMR-185-01
DATE OF SAMPLE	04/12/2016
DATE OF RE-EVALUATION	04/22/2020
DATE OF REPORT	06/10/2020



*Note – Vouchered (V) BRM is a voucher specimen
 A full-size color voucher copy may be purchased by contacting the ChromaDex sales office

ANALYTICAL RESULTS

TEST	METHOD	RESULT
Appearance	Macroscopy	(1) Whole/Cut: Long, thin brown roots Milled: Grey/cream powder
Anatomy/Morphology	Microscopy	(1) Root endodermis (20x) (2) Elongated cortical root parenchyma (40x)
HP-TLC	CDXA-TLCM-102-01	Conforms

STORAGE CONDITIONS

STORAGE 20-30 °C; Dry storage area; Insect free; Volatile free
EXPIRATION DATE 04/2025 under the above conditions

This document is the property of ChromaDex, Inc. and/or its relevant affiliates and contains confidential and proprietary material for the sole use of the intended recipient(s). Any review, use, distribution or disclosure by or to others is strictly prohibited.

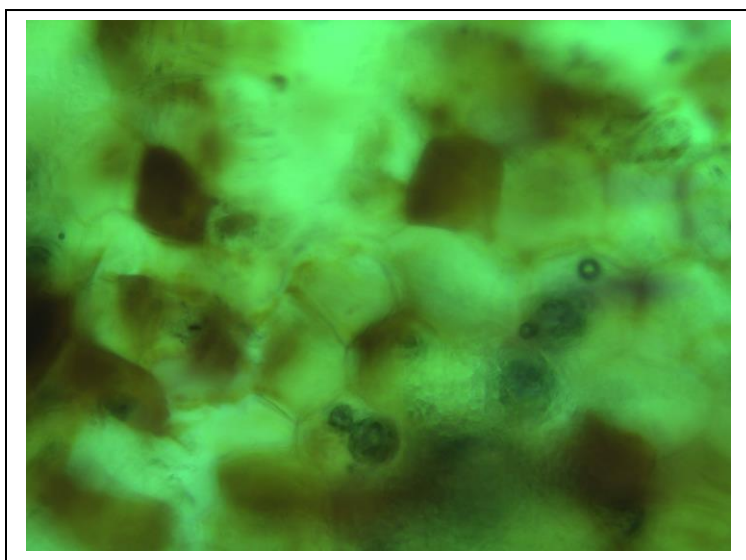
MACROSCOPY

(1)

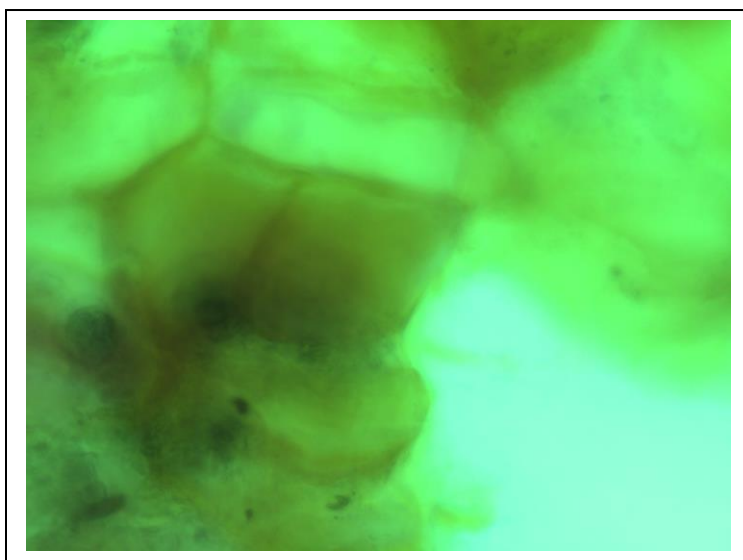


MICROSCOPY

(1)



(2)

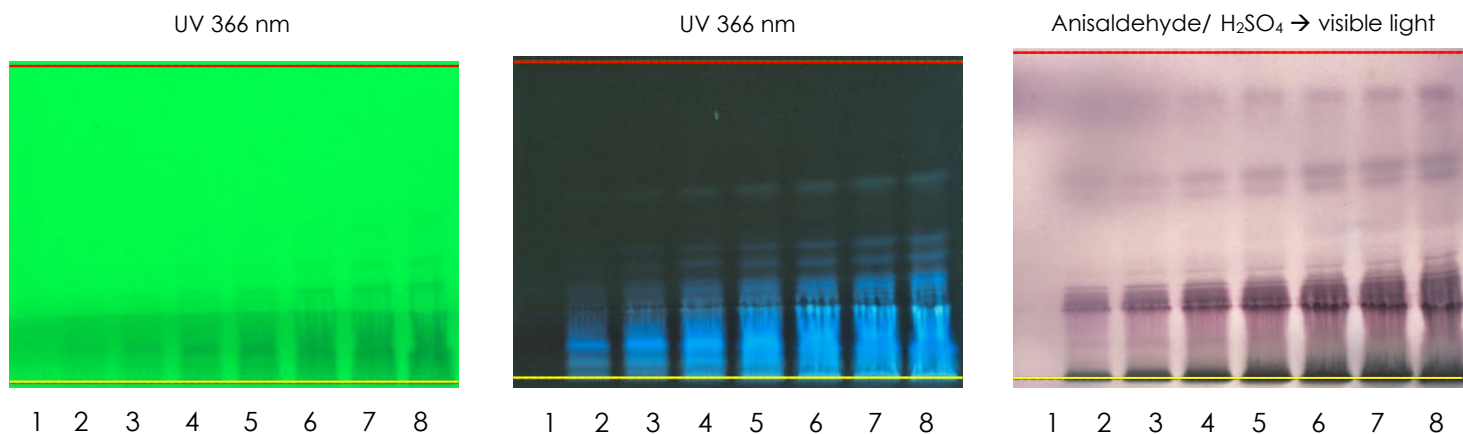


This document is the property of ChromaDex, Inc. and/or its relevant affiliates and contains confidential and proprietary material for the sole use of the intended recipient(s). Any review, use, distribution or disclosure by or to others is strictly prohibited.

HP-TLC CONDITIONS

STATIONARY PHASE	Silica gel 60, F ₂₅₄ , 10 x 10 cm HP-TLC plates
SAMPLE PREPARATION	~0.5 g + 5 mL methanol, sonicated in hot water bath for ~10 minutes.
MOBILE PHASE	Toluene/ ethyl formate/ formic acid [5/3/2]
CHAMBER TEMPERATURE	Ambient
DETECTION	(1) UV 254 nm (2) UV 366 nm (3) Anisaldehyde/H ₂ SO ₄ reagent → visible light

HP-TLC PLATES



YELLOW LINE = SAMPLE ORIGIN
RED LINE = SOLVENT FRONT @ 70 mm

HP-TLC LANE APPLICATIONS

Lane	ID	Lane	ID
1	MeOH blank 2.0 µL	5	<i>Actaea racemosa</i> 6.0 µL
2	<i>Actaea racemosa</i> 1.0 µL	6	<i>Actaea racemosa</i> 8.0 µL
3	<i>Actaea racemosa</i> 2.0 µL	7	<i>Actaea racemosa</i> 10.0 µL
4	<i>Actaea racemosa</i> 4.0 µL	8	<i>Actaea racemosa</i> 12.0 µL

This document is the property of ChromaDex, Inc. and/or its relevant affiliates and contains confidential and proprietary material for the sole use of the intended recipient(s). Any review, use, distribution or disclosure by or to others is strictly prohibited.

REVISION HISTORY

<u>Revision History</u>	<u>Date of Revision</u>	<u>Document/Changes</u>
00	04/14/2016	New report
01	06/10/2020	Passed re-evaluation by HPTLC. Updated expiration date; method conditions, lane applications, and HPTLC images.

This document is the property of ChromaDex, Inc. and/or its relevant affiliates and contains confidential and proprietary material for the sole use of the intended recipient(s). Any review, use, distribution or disclosure by or to others is strictly prohibited.