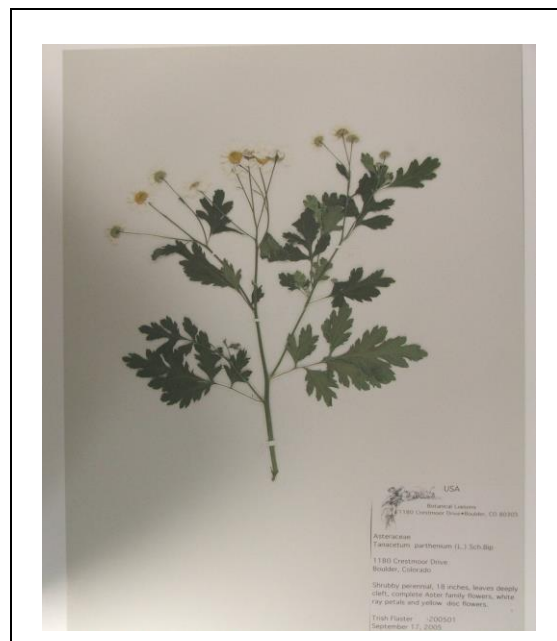


PRODUCT	<i>Tanacetum parthenium</i> (Feverfew) Herb
PART NUMBER	00030677
REFERENCE TYPE	Biomass Reference Material (VBRM) *
LOT NUMBER	00030677-160
COMMON NAME	Feverfew
LATIN NAME	<i>Tanacetum parthenium</i> (L.) Sch. Bip. [Asteraceae]
PLANT PART	Herb
CDXA NUMBER	CDXA-06-0333
REPORT NUMBER	CDXA-VBRMR-047-03
DATE OF SAMPLE	03/15/2006
DATE OF RE-EVALUATION	03/06/2012 (1 st); 06/03/2016 (2 nd); 07/09/2020
DATE OF REPORT	08/17/2020



*Note – Vouchered (V) BRM is a voucher specimen

A full-size color voucher copy may be purchased by contacting the ChromaDex sales office

ANALYTICAL RESULTS

TEST	METHOD	RESULT
Appearance	Macroscopy	(1) Whole/Cut: Green and yellow aerial fragments Milled: Dark green fine powder
Anatomy/Morphology	Microscopy	(1) Uniseriate covering trichome with numerous isodiametric basal cells and an elongated tapering end (2) Long slender terminal cell of a multicellular trichome
HP-TLC	CDXA-TLCM-048-00	Conforms

STORAGE CONDITIONS

STORAGE	20-30 °C; Dry storage area; Insect free; Volatile free
EXPIRATION DATE	07/2025 under the above conditions

This document is the property of ChromaDex, Inc. and/or its relevant affiliates and contains confidential and proprietary material for the sole use of the intended recipient(s). Any review, use, distribution, or disclosure by or to others is strictly prohibited.

MACROSCOPY

(1)

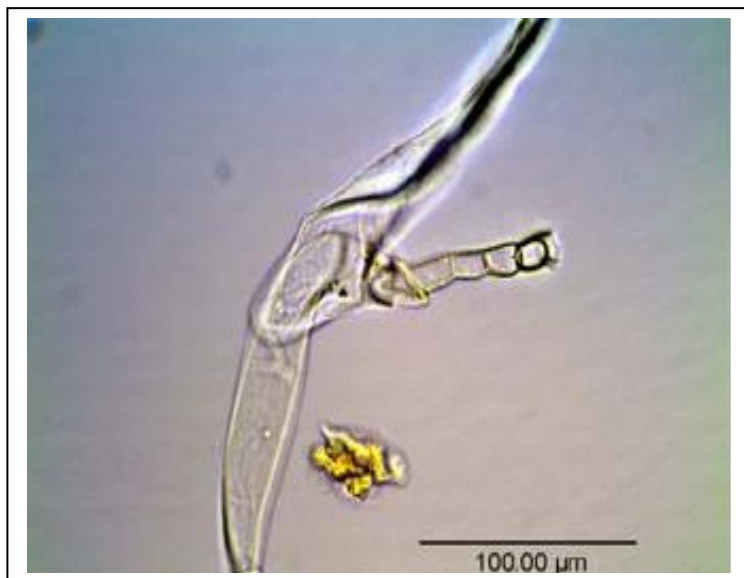


MICROSCOPY

(1)



(2)

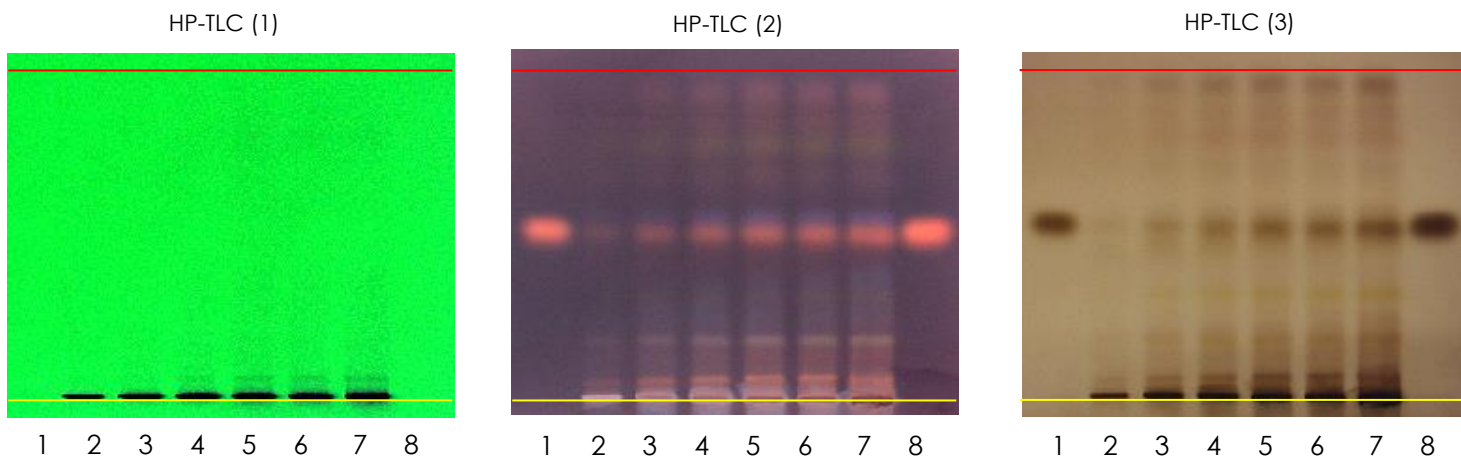


This document is the property of ChromaDex, Inc. and/or its relevant affiliates and contains confidential and proprietary material for the sole use of the intended recipient(s). Any review, use, distribution, or disclosure by or to others is strictly prohibited.

HP-TLC CONDITIONS

STATIONARY PHASE	Silica gel 60, F ₂₅₄ , 10 x 10 cm HP-TLC plates
SAMPLE PREPARATION	0.5 g + 5 mL methanol, sonicated in hot water bath for ~10 minutes.
MOBILE PHASE	Ethyl acetate/ Hexanes [6/6]
CHAMBER TEMPERATURE	Ambient
DETECTION	(1) UV 254 nm (2) Anisaldehyde/H ₂ SO ₄ reagent → UV 366 nm (3) Anisaldehyde/H ₂ SO ₄ reagent → visible light

HP-TLC PLATES



YELLOW LINE = SAMPLE ORIGIN
RED LINE = SOLVENT FRONT @ 70 mm

HP-TLC LANE APPLICATIONS

Lane	ID	Lane	ID
1	Parthenolide	5	<i>Tanacetum parthenium</i> VBRM
2	<i>Tanacetum parthenium</i> VBRM	6	<i>Tanacetum parthenium</i> VBRM
3	<i>Tanacetum parthenium</i> VBRM	7	<i>Tanacetum parthenium</i> VBRM
4	<i>Tanacetum parthenium</i> VBRM	8	Parthenolide

This document is the property of ChromaDex, Inc. and/or its relevant affiliates and contains confidential and proprietary material for the sole use of the intended recipient(s). Any review, use, distribution, or disclosure by or to others is strictly prohibited.

REVISION HISTORY

<u>Revision History</u>	<u>Date of Revision</u>	<u>Document/Changes</u>
00	04/19/2007	New report
01	03/06/2012	Passed re-evaluation; updated expiration date; general template update; updated TLC pictures; updated plant part; updated extraction solvent; updated mobile phase ratio
02	06/10/2016	Passed re-evaluation; updated expiration date; general template update; updated TLC pictures
03	08/17/2020	Passed re-evaluation by HP-TLC. Updated expiration date and template.

This document is the property of ChromaDex, Inc. and/or its relevant affiliates and contains confidential and proprietary material for the sole use of the intended recipient(s). Any review, use, distribution, or disclosure by or to others is strictly prohibited.