

<b>PRODUCT</b>	<i>Rosmarinus officinalis</i> (Rosemary) Herb
<b>PART NUMBER</b>	00030657
<b>REFERENCE TYPE</b>	Biomass Reference Material (VBRM) *
<b>LOT NUMBER</b>	00030657-436
<b>COMMON NAME</b>	Rosemary
<b>LATIN NAME</b>	<i>Rosmarinus officinalis</i> L. [Lamiaceae]
<b>PLANT PART</b>	Herb
<b>CDXA NUMBER</b>	CDXA-11-6677
<b>REPORT NUMBER</b>	CDXA-VBRMR-113-02
<b>DATE OF SAMPLE</b>	12/27/2011
<b>DATE OF RE-EVALUATION</b>	05/09/2016 (1 <sup>st</sup> ); 07/09/2020 (2 <sup>nd</sup> )
<b>DATE OF REPORT</b>	08/13/2020



\*Note – Vouchered (V) BRM is a voucher specimen

A full-size color voucher copy may be purchased by contacting the ChromaDex sales office

## ANALYTICAL RESULTS

TEST	METHOD	RESULT
Appearance	Macroscopy	(1) Whole/Cut: Needle-like leaves (green above, and white below) with dense short woolly hairs, and brown stems Milled: Green shavings
Anatomy/Morphology	Microscopy	(1) Branching trichomes (100x) (2) Helical and scalariform vessels (200x)
HP-TLC	CDXA-TLCM-042-00	Conforms

## STORAGE CONDITIONS

<b>STORAGE</b>	20-30 °C; Dry storage area; Insect free; Volatile free
<b>EXPIRATION DATE</b>	07/2025 under the above conditions

This document is the property of ChromaDex, Inc. and/or its relevant affiliates and contains confidential and proprietary material for the sole use of the intended recipient(s). Any review, use, distribution, or disclosure by or to others is strictly prohibited.

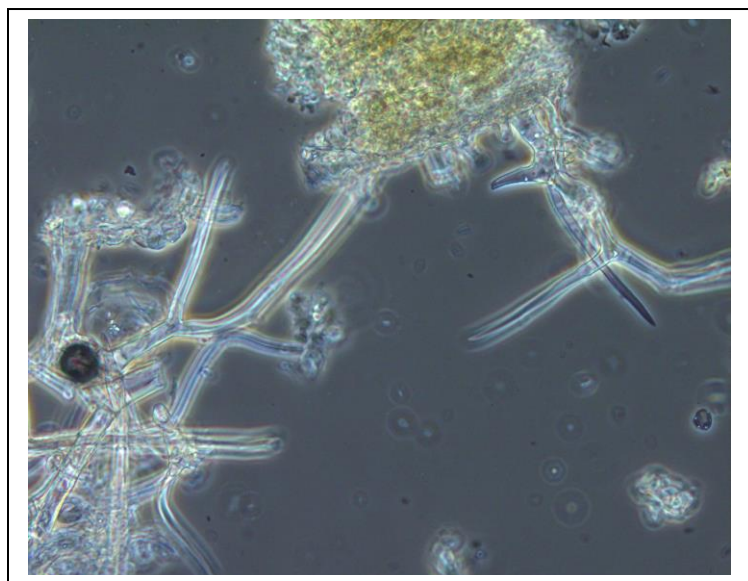
## MACROSCOPY

(1)

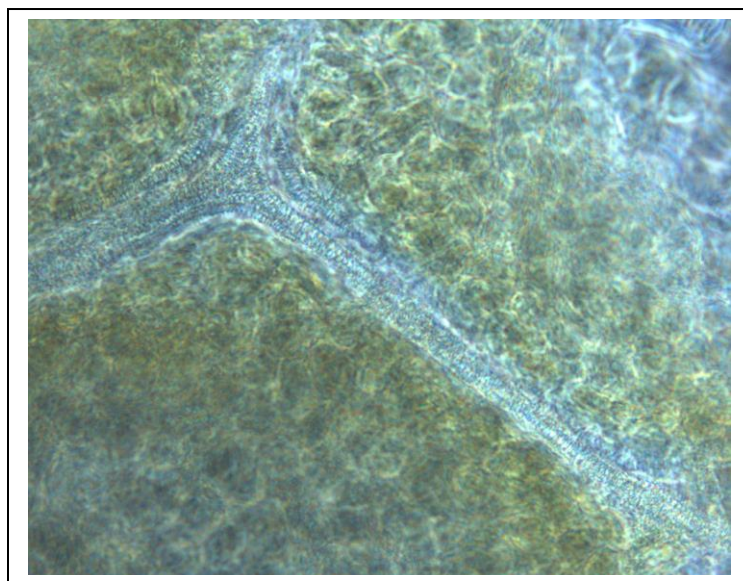


## MICROSCOPY

(1)



(2)



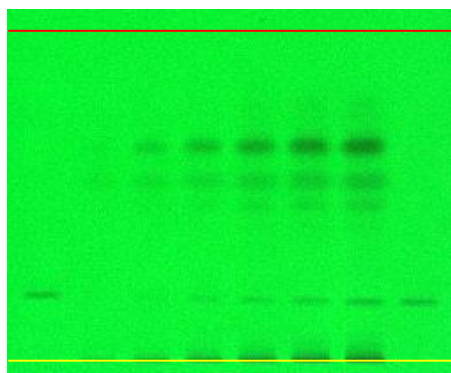
This document is the property of ChromaDex, Inc. and/or its relevant affiliates and contains confidential and proprietary material for the sole use of the intended recipient(s). Any review, use, distribution, or disclosure by or to others is strictly prohibited.

**HP-TLC CONDITIONS**

<b>STATIONARY PHASE</b>	Silica gel 60, F <sub>254</sub> , 10 x 10 cm HP-TLC plates
<b>SAMPLE PREPARATION</b>	0.5 g + 5 mL methanol, sonicated in hot water bath for ~10 minutes.
<b>MOBILE PHASE</b>	Toluene/ ethyl formate/ formic acid [5/4/1]
<b>CHAMBER TEMPERATURE</b>	Ambient
<b>DETECTION</b>	(1) UV 254 nm (2) UV 366 nm (3) Natural Products reagent → UV 366 nm

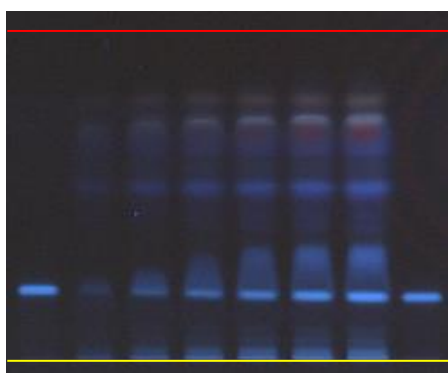
**HP-TLC PLATES**

HP-TLC (1)



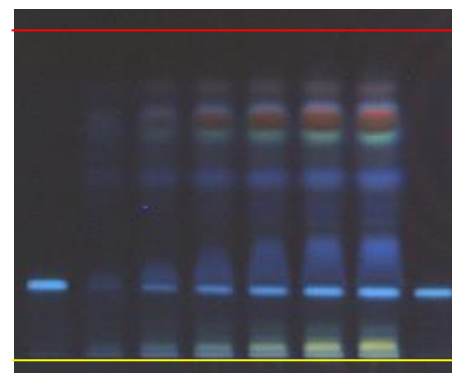
1 2 3 4 5 6 7 8

HP-TLC (2)



1 2 3 4 5 6 7 8

HP-TLC (3)



1 2 3 4 5 6 7 8

YELLOW LINE = SAMPLE ORIGIN  
 RED LINE = SOLVENT FRONT @ 70 mm

**HP-TLC LANE APPLICATIONS**

Lane	ID	Lane	ID
1	Rosmarinic Acid	5	<i>Rosmarinus officinalis</i> VBRM
2	<i>Rosmarinus officinalis</i> VBRM	6	<i>Rosmarinus officinalis</i> VBRM
3	<i>Rosmarinus officinalis</i> VBRM	7	<i>Rosmarinus officinalis</i> VBRM
4	<i>Rosmarinus officinalis</i> VBRM	8	Rosmarinic Acid

**REVISION HISTORY**

<u>Revision History</u>	<u>Date of Revision</u>	<u>Document/Changes</u>
00	02/28/2012	New report
01	05/11/2016	Passed re-evaluation; updated expiration date; general template update; updated milled description; updated detection
02	08/13/2020	Material passed reevaluation by HP-TLC. Updated expiration date and template.

This document is the property of ChromaDex, Inc. and/or its relevant affiliates and contains confidential and proprietary material for the sole use of the intended recipient(s). Any review, use, distribution, or disclosure by or to others is strictly prohibited.