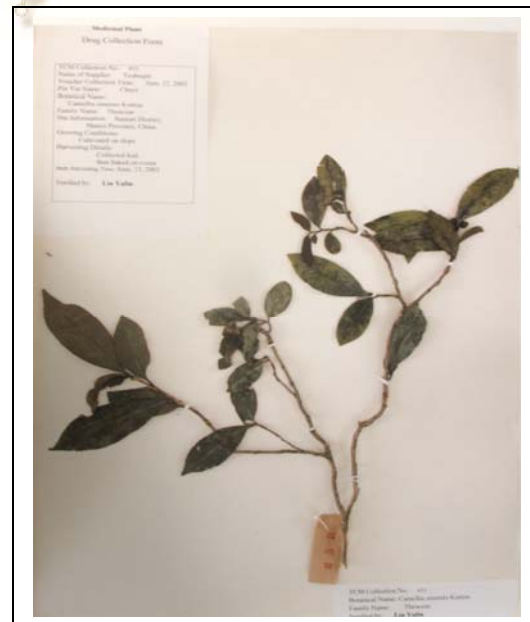


# Certificate of Analysis

FOR LABORATORY USE ONLY

<b>PRODUCT</b>	green tea ( <i>Camellia sinensis</i> ) Leaf
<b>PART NUMBER</b>	00030330
<b>REFERENCE TYPE</b>	Biomass Reference Material (VBRM) *
<b>LOT NUMBER</b>	00030330-054
<b>COMMON NAME</b>	green tea
<b>LATIN NAME</b>	<i>Camellia sinensis</i> (L.) Kuntze var. <i>sinensis</i> [Theaceae]
<b>PLANT PART</b>	Leaf
<b>CDXA NUMBER</b>	CDXA-BRM-054
<b>REPORT NUMBER</b>	CDXA-VBRMR-030-03
<b>DATE OF SAMPLE</b>	07 July 2003
<b>DATE OF RE-EVALUATION</b>	09 February 2015
<b>DATE OF REPORT</b>	16 March 2015



\*Note – Vouchered (V) BRM is a voucher specimen  
A full-size color voucher copy may be purchased by contacting the ChromaDex sales office

## ANALYTICAL RESULTS

TEST	METHOD	RESULT
Appearance	Macroscopy	(1) Whole/Cut: Dark green leaves (2) Milled: Green fine powder
Anatomy/Morphology	Microscopy	(1) Thick walled unicellular trichome (400x)
HP-TLC	CDXA-TLCM-013-04	Conforms

## STORAGE CONDITIONS

**STORAGE** 20-30 °C; Dry storage area; Insect free; Volatile free  
**EXPIRATION DATE** 02/2030 under the above conditions

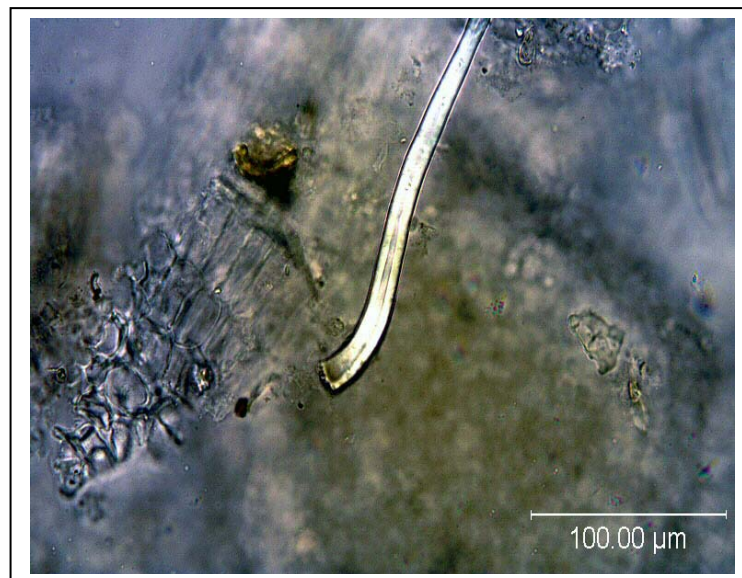
### MACROSCOPY

(2)



### MICROSCOPY

(1)



## Certificate of Analysis

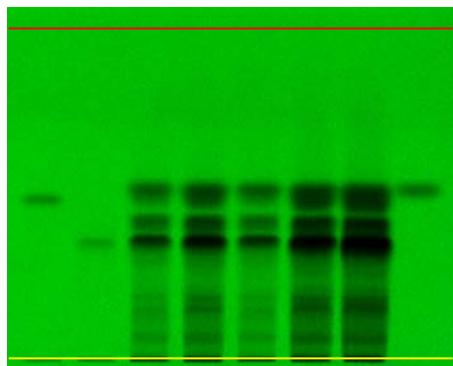
FOR LABORATORY USE ONLY

### HP-TLC CONDITIONS

<b>STATIONARY PHASE</b>	Silica gel 60, F <sub>254</sub> , 10 x 10 cm HP-TLC plates
<b>SAMPLE PREPARATION</b>	0.5 g + 5 ml 80% methanol, sonicated in hot water bath for ~10 minutes.
<b>MOBILE PHASE</b>	Chloroform/ ethyl formate/ formic acid/ methanol [5/4/2/2]
<b>CHAMBER TEMPERATURE</b>	Ambient
<b>DETECTION</b>	(1) UV 254 nm (2) UV 366 nm (3) Vanillin/H <sub>2</sub> SO <sub>4</sub> spray reagent → visible light

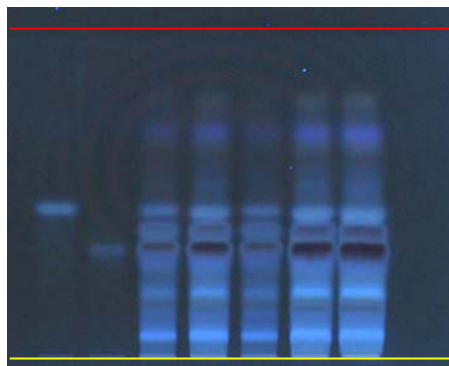
### HP-TLC PLATES

HP-TLC (1)



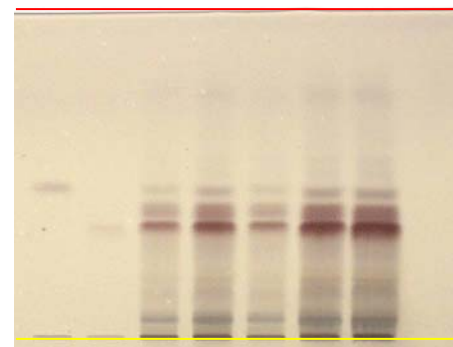
1 2 3 4 5 6 7 8

HP-TLC (2)



1 2 3 4 5 6 7 8

HP-TLC (3)



1 2 3 4 5 6 7 8

YELLOW LINE = SAMPLE ORIGIN  
RED LINE = SOLVENT FRONT @ 70MM

### HP-TLC LANE APPLICATIONS

Lane	ID	Lane	ID
1	(-)- epicatechin	5	<i>Camellia sinensis</i> VBRM
2	(-)- epigallocatechin gallate	6	<i>Camellia sinensis</i> VBRM
3	<i>Camellia sinensis</i> VBRM	7	<i>Camellia sinensis</i> VBRM
4	<i>Camellia sinensis</i> VBRM	8	Caffeine

## REVISION HISTORY

<u>Revision History</u>	<u>Date of Revision</u>	<u>Document/Changes</u>
00	05 March 2007	New report
01	23 April 2008	Passed re-evaluation; updated expiration date; updated HP-TLC method
02	26 May 2010	Passed re-evaluation; updated expiration date; updated method; updated HP-TLC plate pictures; general template update
03	16 March 2015	Passed re-evaluation; updated expiration date; updated method; updated macroscopy image; updated HP-TLC plate pictures; general template update