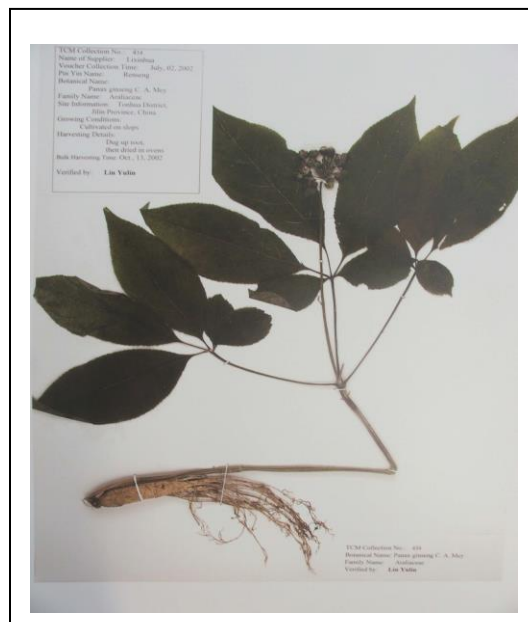


<b>PRODUCT</b>	Asian Ginseng ( <i>Panax Ginseng</i> ) Root
<b>PART NUMBER</b>	00030303
<b>REFERENCE TYPE</b>	Biomass Reference Material (VBRM) *
<b>LOT NUMBER</b>	00030303-055
<b>COMMON NAME</b>	Asian Ginseng
<b>LATIN NAME</b>	<i>Panax ginseng</i> C. A. Mey. [Araliaceae]
<b>PLANT PART</b>	Root
<b>CDXA NUMBER</b>	CDXA-BRM-055
<b>REPORT NUMBER</b>	CDXA-VBRMR-068-03
<b>DATE OF SAMPLE</b>	10/15/2003
<b>DATE OF RE-EVALUATION</b>	01/19/2012 (1 <sup>st</sup> ); 03/10/2016 (2 <sup>nd</sup> ) 04/16/2020 (3 <sup>rd</sup> )
<b>DATE OF REPORT</b>	06/01/2020

\*Note – Vouchered (V) BRM is a voucher specimen

A full-size color voucher copy may be purchased by contacting the ChromaDex sales office



## ANALYTICAL RESULTS

TEST	METHOD	RESULT
Appearance	Macroscopy	(1) Whole/Cut: Thick brown/yellow root fragment with transverse and longitudinal wrinkles (2) Milled: Tan powder
Anatomy/Morphology	Microscopy	(400x) Yellow secretion from a resin canal
HP-TLC	CDXA-TLCM-030-03	Conforms

## STORAGE CONDITIONS

<b>STORAGE</b>	20-30 °C; Dry storage area; Insect free; Volatile free
<b>EXPIRATION DATE</b>	04/2025 under the above conditions

This document is the property of ChromaDex, Inc. and/or its relevant affiliates and contains confidential and proprietary material for the sole use of the intended recipient(s). Any review, use, distribution or disclosure by or to others is strictly prohibited.

## MACROSCOPY

(1)



## MICROSCOPY

(1)



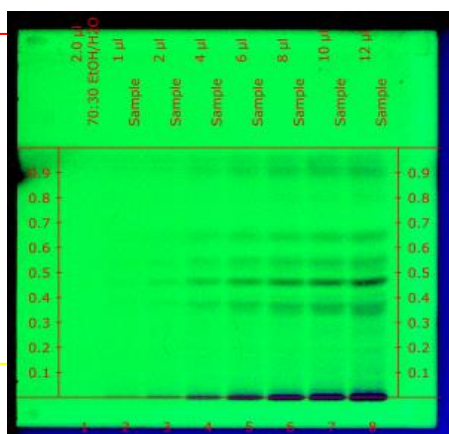
This document is the property of ChromaDex, Inc. and/or its relevant affiliates and contains confidential and proprietary material for the sole use of the intended recipient(s). Any review, use, distribution or disclosure by or to others is strictly prohibited.

## HP-TLC CONDITIONS

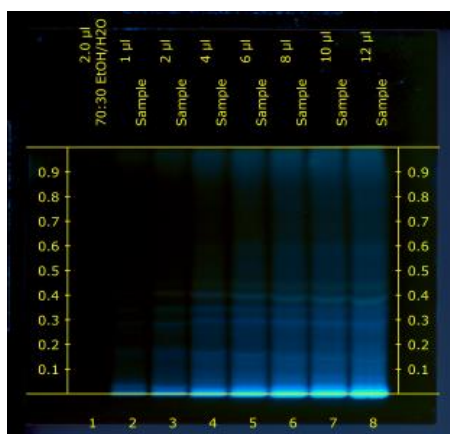
<b>STATIONARY PHASE</b>	Silica gel 60, F <sub>254</sub> , 10 x 10 cm HP-TLC plates
<b>SAMPLE PREPARATION</b>	0.5 g + 5 ml methanol, sonicated in hot water bath for ~10 minutes.
<b>MOBILE PHASE</b>	Butanol/ EtOAc/ water [20/5/10] 10 ml
<b>CHAMBER TEMPERATURE</b>	Ambient
<b>DETECTION</b>	(1) UV 254 nm (2) UV 366 nm (3) Anisaldehyde → visible light

## HP-TLC PLATES

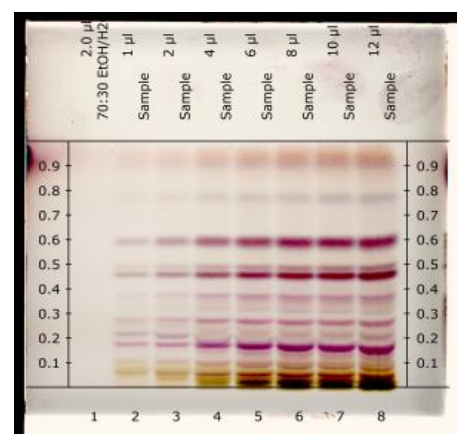
UV 254 nm



UV 366nm



Anisaldehyde → Visible light



## HP-TLC LANE APPLICATIONS

Lane	ID	Lane	ID
1	70:30 EtOH/H <sub>2</sub> O	5	Panax ginseng VBRM sample
2	Panax ginseng VBRM sample	6	Panax ginseng VBRM sample
3	Panax ginseng VBRM sample	7	Panax ginseng VBRM sample
4	Panax ginseng VBRM sample	8	Panax ginseng VBRM sample

This document is the property of ChromaDex, Inc. and/or its relevant affiliates and contains confidential and proprietary material for the sole use of the intended recipient(s). Any review, use, distribution or disclosure by or to others is strictly prohibited.

**REVISION HISTORY**

<u>Revision History</u>	<u>Date of Revision</u>	<u>Document/Changes</u>
00	10/15/2003	New report
01	01/20/2012	Passed re-evaluation; updated expiration date; general template update
02	03/11/2016	Passed second re-evaluation; updated expiration date; updated conditions; updated TLC pictures; general template update
03	06/01/2020	Passed third re-evaluation; updated expiration date; general template update

This document is the property of ChromaDex, Inc. and/or its relevant affiliates and contains confidential and proprietary material for the sole use of the intended recipient(s). Any review, use, distribution or disclosure by or to others is strictly prohibited.