

PRODUCT	<i>Zingiber officinale</i> (Ginger) Rhizome
PART NUMBER	00030290
REFERENCE TYPE	Biomass Reference Material (BRM) *
LOT NUMBER	00030290-501
COMMON NAME	Ginger
LATIN NAME	<i>Zingiber officinale</i> Roscoe [Zingiberaceae]
PLANT PART	Rhizome
SAMPLE NUMBER	CDXA-14-2775
REPORT NUMBER	CDXA-BRMR-150-02
DATE OF SAMPLE	05/13/2014
DATE OF REEVALUATION	11/06/2018 (1 st); 10/12/2022 (2 nd)
DATE OF REPORT	10/28/2022

*Note – Biomass Reference Material (BRM) is not a voucher specimen

ANALYTICAL RESULTS

TEST	METHOD	RESULT
Appearance	Macroscopy	(1) Whole/Cut: Tan-yellow chunks of root (2) Milled: Tan powder
Anatomy/Morphology	Microscopy	(1) Periderm cork from a transverse section under a polarity filter (2) Undulating vessel seen from a transverse section
HP-TLC	See HP-TLC conditions	Conforms

STORAGE CONDITIONS

STORAGE	20-30 °C; Dry storage area; Insect free; Volatile free
EXPIRATION DATE	10/2027 under the above conditions

This document is the property of ChromaDex, Inc. and/or its relevant affiliates and contains confidential and proprietary material for the sole use of the intended recipient(s). Any review, use, distribution, or disclosure by or to others is strictly prohibited.

MACROSCOPY

(1)

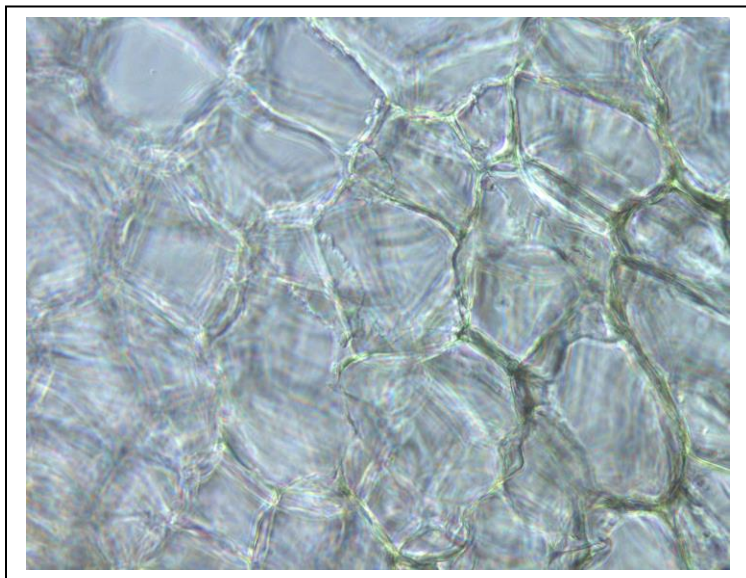


(2)

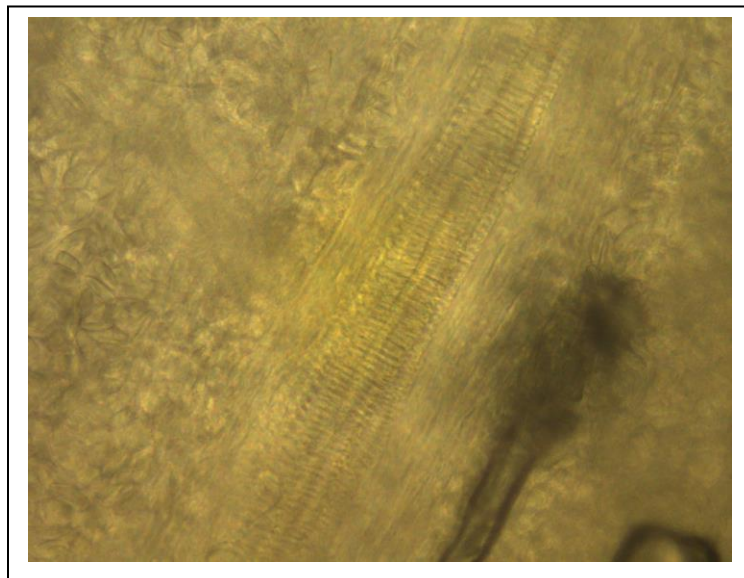


MICROSCOPY

(1)



(2)



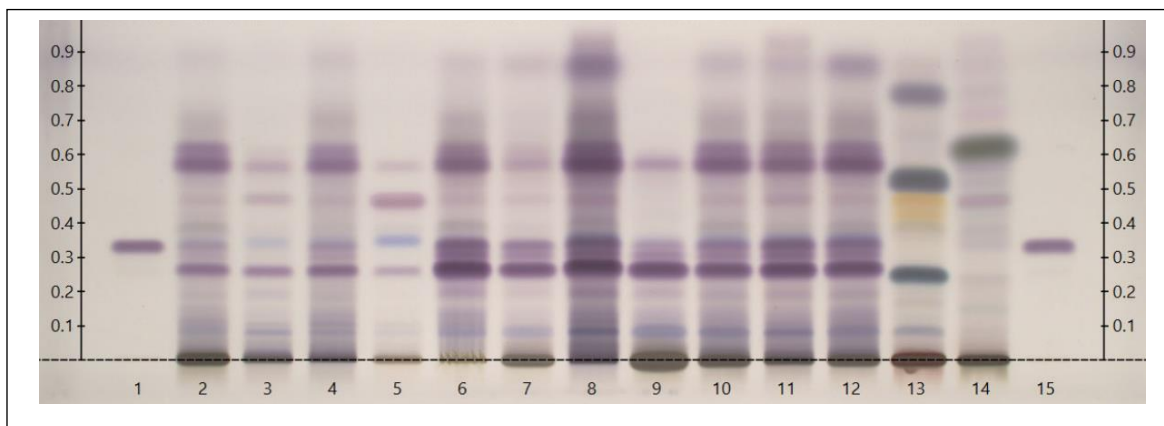
This document is the property of ChromaDex, Inc. and/or its relevant affiliates and contains confidential and proprietary material for the sole use of the intended recipient(s). Any review, use, distribution, or disclosure by or to others is strictly prohibited.

HP-TLC CONDITIONS

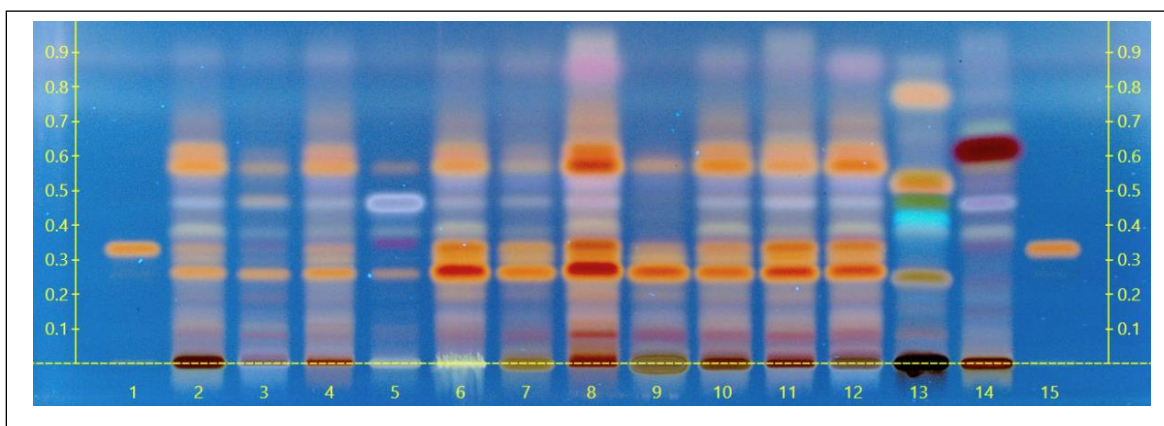
STATIONARY PHASE	Silica gel 60, HPTLC plates
SAMPLE PREPARATION	0.3 g + 3 mL 70% grain Ethanol, sonicate/heat at 50 °C for 30 min.
MOBILE PHASE	Toluene: Ethyl acetate [7.5/2.5]
DETECTION	(1) Vanillin/Sulfuric, 110 °C, 2 min, visible light (2) Vanillin/Sulfuric, 110 °C, 2 min, 366 nm

HP-TLC PLATES

HP-TLC (1)



HP-TLC (2)



This document is the property of ChromaDex, Inc. and/or its relevant affiliates and contains confidential and proprietary material for the sole use of the intended recipient(s). Any review, use, distribution, or disclosure by or to others is strictly prohibited.

HP-TLC LANE APPLICATIONS

Lane	ID	Lane	ID
1	10-Gingerol, methanol (2 µL)	9	N/A
2	<i>Zingiber officinale</i> (root) (6 µL)	10	<i>Zingiber officinale</i> BRM (6 µL)
3	<i>Zingiber officinale</i> (root) (6 µL)	11	N/A
4	<i>Zingiber officinale</i> (rhizome) (6 µL)	12	N/A
5	N/A	13	<i>Alpinia Officinarum</i> (rhizome) (6 µL)
6	N/A	14	<i>Alpinia galanga</i> (rhizome) (6 µL)
7	N/A	15	10-Gingerol, methanol (2 µL)
8	N/A	16	N/A

REVISION HISTORY

<u>Revision History</u>	<u>Date of Revision</u>	<u>Document/Changes</u>
00	08/04/2014	New report
01	12/04/2018	Material passed reevaluation by HP-TLC. Updated expiration date and template.
02	10/28/2022	Material passed reevaluation by HP-TLC. Updated HP-TLC plates, conditions, and lane assignments. Added image of ground material and updated expiration date and template.

This document is the property of ChromaDex, Inc. and/or its relevant affiliates and contains confidential and proprietary material for the sole use of the intended recipient(s). Any review, use, distribution, or disclosure by or to others is strictly prohibited.