

**CERTIFICATE OF ANALYSIS**
*For Laboratory Use Only*

<b>PRODUCT</b>	Dandelion ( <i>Taraxacum officinale</i> ) Root
<b>PART NUMBER</b>	00030180
<b>REFERENCE TYPE</b>	Biomass Reference Material (BRM) *
<b>LOT NUMBER</b>	00030180-098
<b>COMMON NAME</b>	Dandelion
<b>LATIN NAME</b>	<i>Taraxacum officinale</i> Weber ex F.H. Wigg. [Asteraceae]
<b>PLANT PART</b>	Root
<b>CDXA NUMBER</b>	CDXA-BRM-098
<b>REPORT NUMBER</b>	CDXA-BRMR-046-02
<b>DATE OF SAMPLE</b>	16 January 2004
<b>DATE OF RE-EVALUATION</b>	16 August 2016
<b>DATE OF REPORT</b>	25 August 2016

\*Note – Biomass Reference Material (BRM) is not a voucher specimen

**ANALYTICAL RESULTS**

TEST	METHOD	RESULT
Appearance	Macroscopy	(1) Whole/Cut: 1 inch brown fragments of root (2) Milled: Tan/beige powder
Anatomy/Morphology	Microscopy	(1) Anastomosing laticiferous vessels (2) Collapsed trichome from the crown of the root
HP-TLC	CDXA-TLCM-018-03	Conforms

**STORAGE CONDITIONS**

<b>STORAGE</b>	20-30 °C; Dry storage area; Insect free; Volatile free
<b>EXPIRATION DATE</b>	08/2031 under the above conditions

**MACROSCOPY**

(1)



**MICROSCOPY**

(1)



(2)



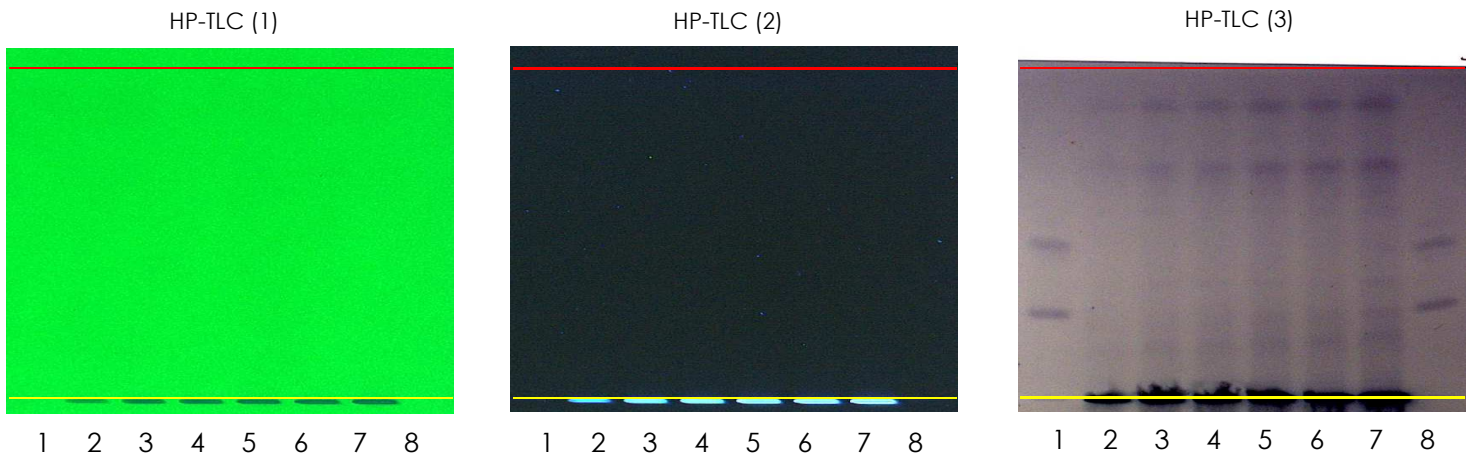
**CERTIFICATE OF ANALYSIS**

For Laboratory Use Only

**HP-TLC CONDITIONS**

<b>STATIONARY PHASE</b>	Silica gel 60, F <sub>254</sub> , 10 x 10 cm HP-TLC plates
<b>SAMPLE PREPARATION</b>	0.5 g + 5 ml methanol, sonicated in hot water bath for ~10 minutes.
<b>MOBILE PHASE</b>	Chloroform/Ethanol [9.5/0.5]
<b>CHAMBER TEMPERATURE</b>	Ambient
<b>DETECTION</b>	(1) UV 254 nm (2) UV 366 nm (3) Vanillin/H <sub>2</sub> SO <sub>4</sub> spray reagent → visible light

**HP-TLC PLATES**



YELLOW LINE = SAMPLE ORIGIN  
RED LINE = SOLVENT FRONT @ 70MM

**HP-TLC LANE APPLICATIONS**

Lane	ID	Lane	ID
1	β-sitosterol	5	<i>Taraxacum officinale</i> BRM
2	<i>Taraxacum officinale</i> BRM	6	<i>Taraxacum officinale</i> BRM
3	<i>Taraxacum officinale</i> BRM	7	<i>Taraxacum officinale</i> BRM
4	<i>Taraxacum officinale</i> BRM	8	β-sitosterol

**CERTIFICATE OF ANALYSIS***For Laboratory Use Only***REVISION HISTORY**

<u>Revision History</u>	<u>Date of Revision</u>	<u>Document/Changes</u>
00	08/31/07	New report and template update
01	05/15/12	Passed re-evaluation; updated expiration date; general template update; updated TLC conditions, plate pictures, lane applications, and method
02	08/25/16	Passed re-evaluation; updated expiration date; general template update; updated TLC method, conditions, and plate pictures; added revision history.