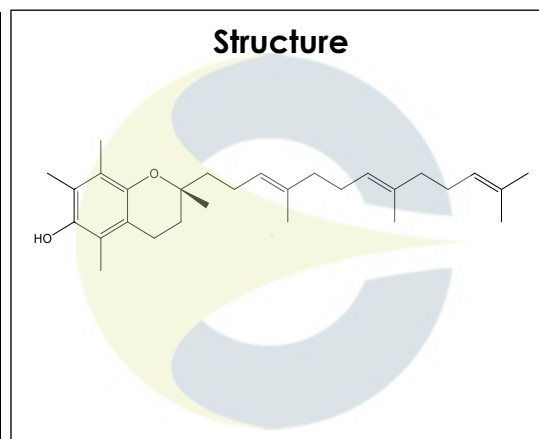


Certificate of Analysis
For Laboratory Use Only

| | |
|-----------------------|---------------------|
| PRODUCT NAME | D-alpha-Tocotrienol |
| PART NUMBER | 00020325 |
| STANDARD TYPE | Primary (P) |
| LOT NUMBER | 00020325-698 |
| REPORT NUMBER | CDXA-RSS-10071-00 |
| SAMPLE NUMBER | CDXP-23-00063 |
| DATE OF SAMPLE | 01/25/2023 |
| DATE OF REPORT | 02/10/2023 |



| | |
|------------------------------|---|
| CHEMICAL NAMES | (R-(E,E))-3,4-Dihydro-2,5,7,8-tetramethyl-2-(4,8,12-trimethyl-3,7,11-tridecatrienyl)-2H-1-benzopyran-6-ol |
| CHEMICAL FORMULA | C ₂₉ H ₄₄ O ₂ |
| MOLECULAR WEIGHT (MW) | 424.66 |
| CHEMICAL FAMILY | Tocotrienol |
| CAS NUMBER | [58864-81-6] |
| EC#(EINECS) | 611-757-7 |
| RTECS | NA |

ANALYTICAL RESULTS

| TEST | METHOD | SPECIFICATION | RESULT |
|-------------------|-------------------|-----------------------|-----------------------|
| Adjusted Purity | NA | ≥ 85% | 99.9% |
| HPLC | 0.700.10.2.METH38 | ≥ 90% | 99.9% |
| NMR | 0.700.12.4 | Conforms to structure | Conforms to structure |
| Mass Spectrum | 0.700.12.27 | Conforms | Conforms |
| Residual Solvent* | USP <467> | NA | ND |
| Water | 0.700.12.37 | NA | ND |
| Appearance | NA | NA | Off-white waxy solid |

*Testing performed at an ISO 17025 accredited subcontracted laboratory.

ADJUSTED PURITY: 99.9% IS BASED ON (100 - 0.0 SOLVENTS - 0.0 WATER) X 99.9% HPLC

STORAGE CONDITIONS

| | |
|------------------------|-------------------------------------|
| STORAGE | -20 °C in a dry place. |
| EXPIRATION DATE | 01/2028 under the above conditions. |

This document is the property of ChromaDex, Inc. and/or its relevant affiliates and contains confidential and proprietary material for the sole use of the intended recipient(s). Any review, use, distribution or disclosure by or to others is strictly prohibited.

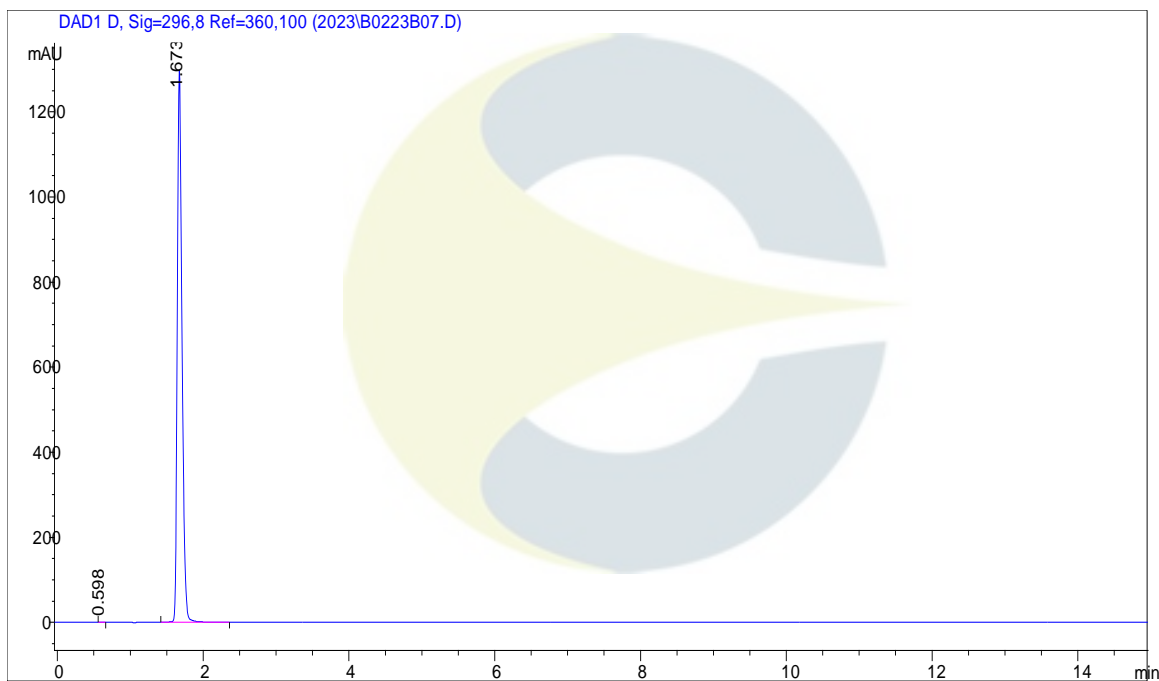
Certificate of Analysis

For Laboratory Use Only

ANALYTICAL CONDITIONS

| | |
|-----------------|--|
| INSTRUMENT | AGILENT 1260 HPLC UV-VIS (DAD); AB-SCIEX 6600 TRIPLE TOF |
| COLUMN | Phenomenex Luna Silica(2) 150 x 2.00 mm, 3 µm particle size |
| MOBILE PHASE | A - 0.2% IPA and 0.8% HOAc in n-Hexane Isocratic 100% A for 15 minutes. |
| COLUMN TEMP. | 35 °C |
| FLOW RATE | 0.8 mL/minute |
| INJECTION VOL. | 10.0 µL |
| INJECTION CONC. | 1.0 mg/mL in n-Hexane |
| DETECTION | 296 ± 4 nm |

HPLC CHROMATOGRAM OF D-ALPHA-TOCOTRIENOL (CDXP-23-00063)

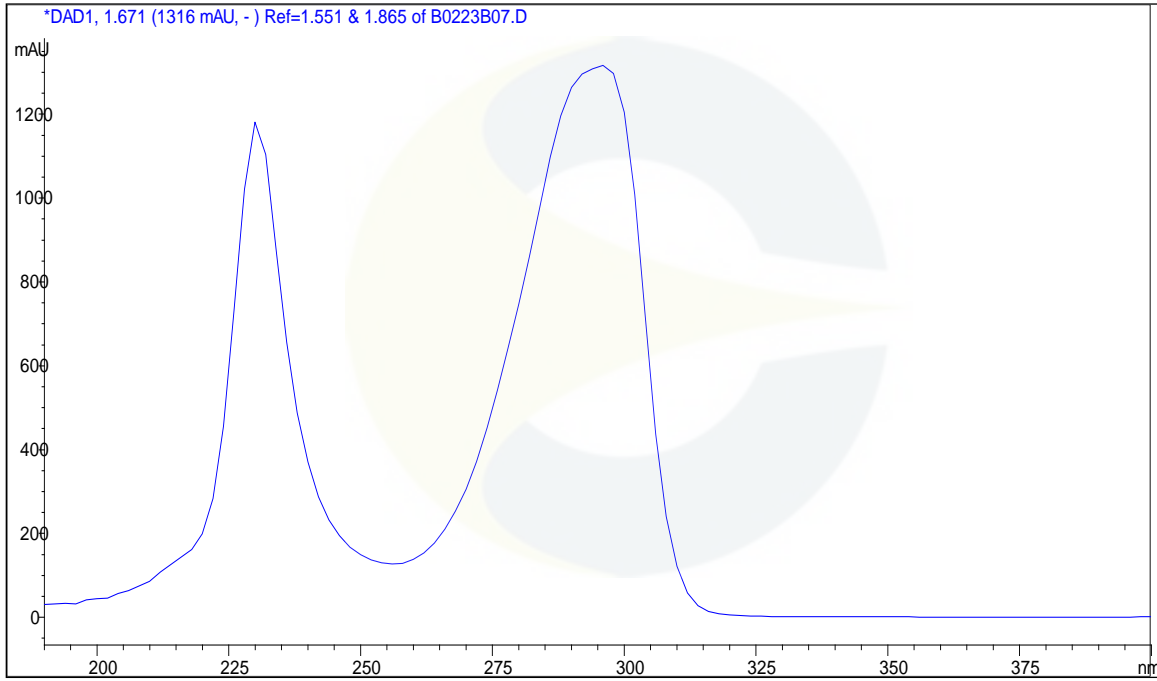


This document is the property of ChromaDex, Inc. and/or its relevant affiliates and contains confidential and proprietary material for the sole use of the intended recipient(s). Any review, use, distribution or disclosure by or to others is strictly prohibited.

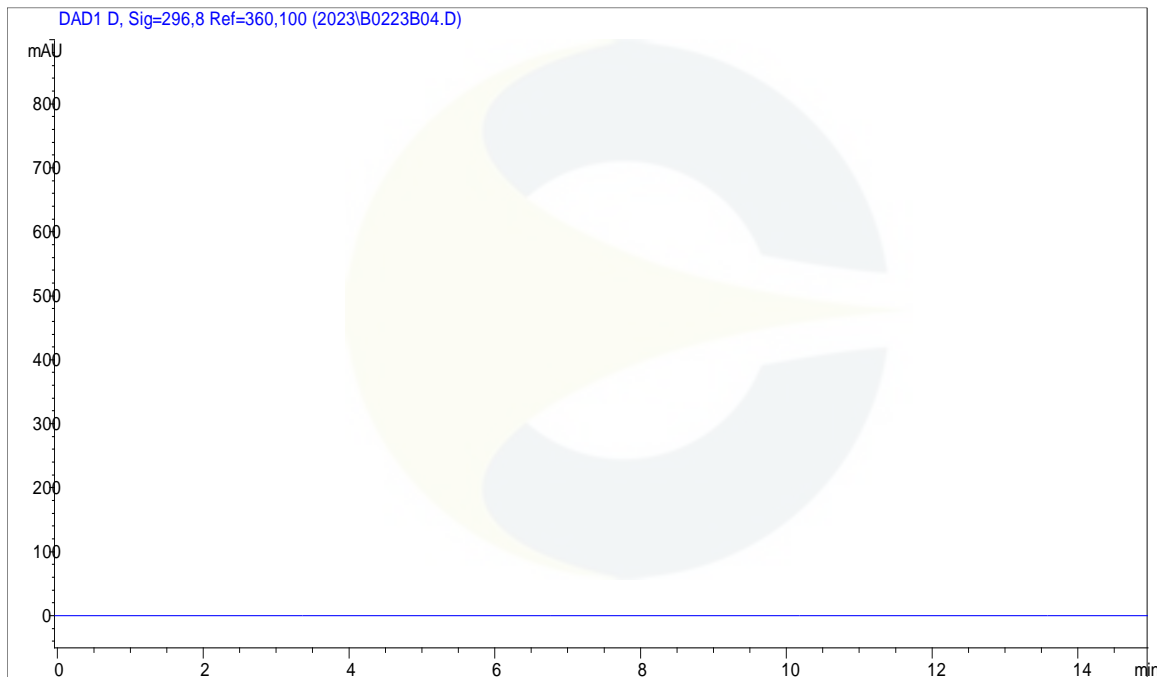
Certificate of Analysis

For Laboratory Use Only

UV SPECTRUM AT RT = 1.7 MINUTES

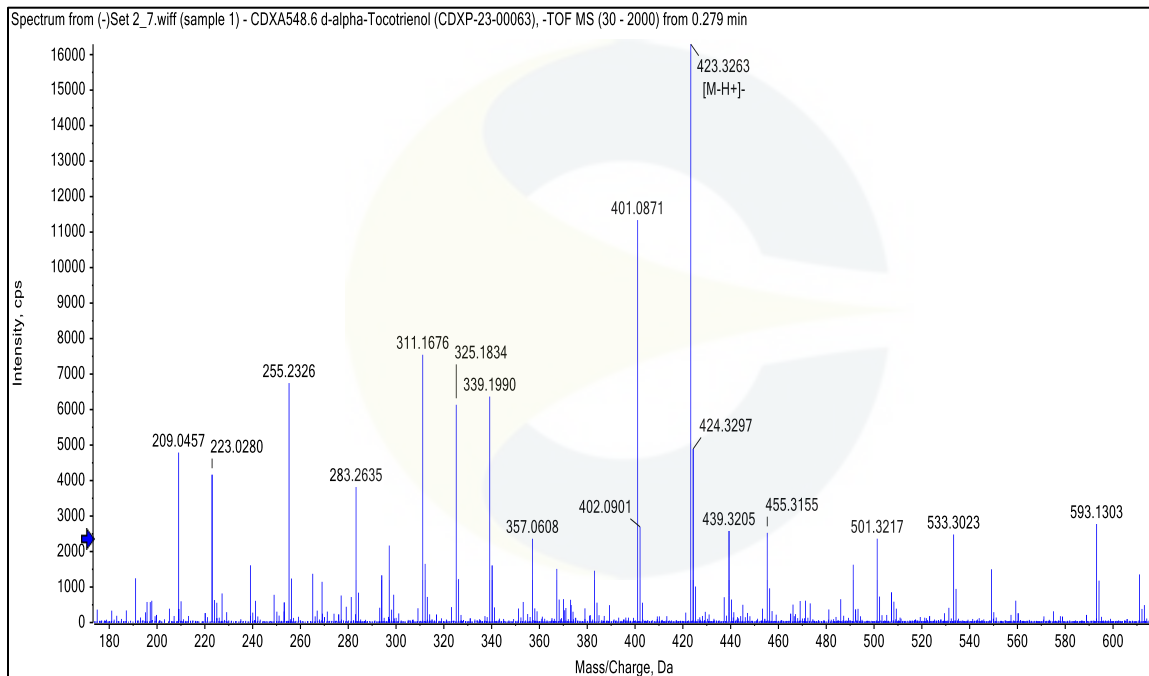


HPLC CHROMATOGRAM OF DILUENT BLANK

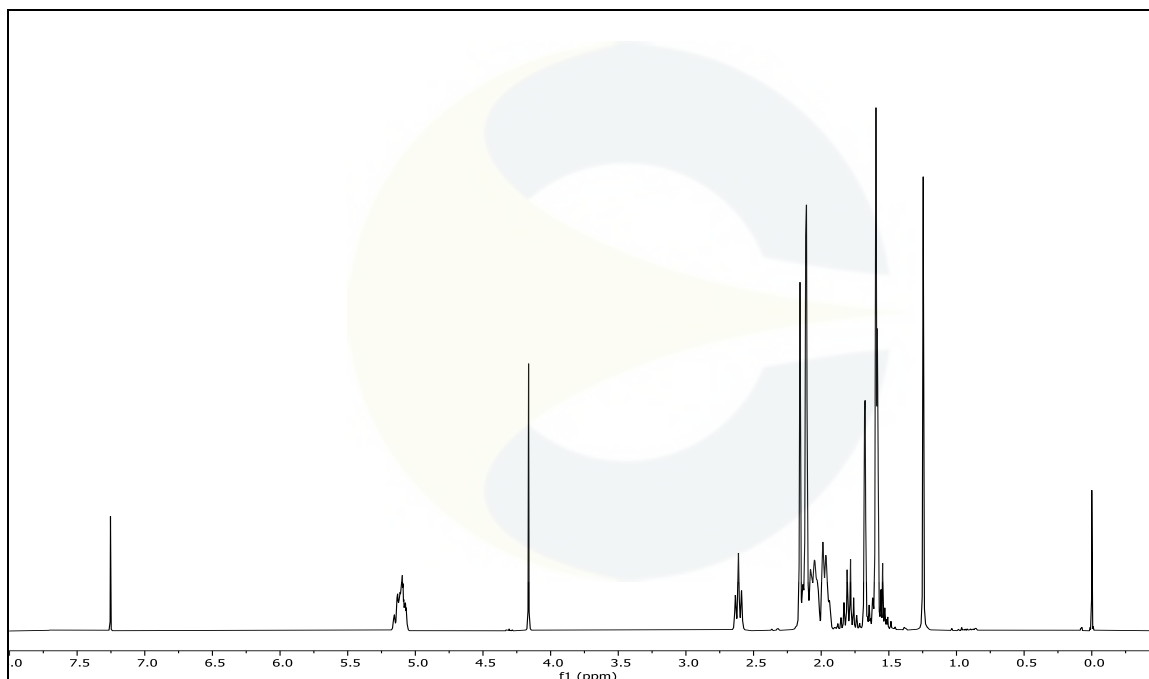


This document is the property of ChromaDex, Inc. and/or its relevant affiliates and contains confidential and proprietary material for the sole use of the intended recipient(s). Any review, use, distribution or disclosure by or to others is strictly prohibited.

MASS SPECTRUM OF D-ALPHA-TOCOTRIENOL (CDXP-23-00063)

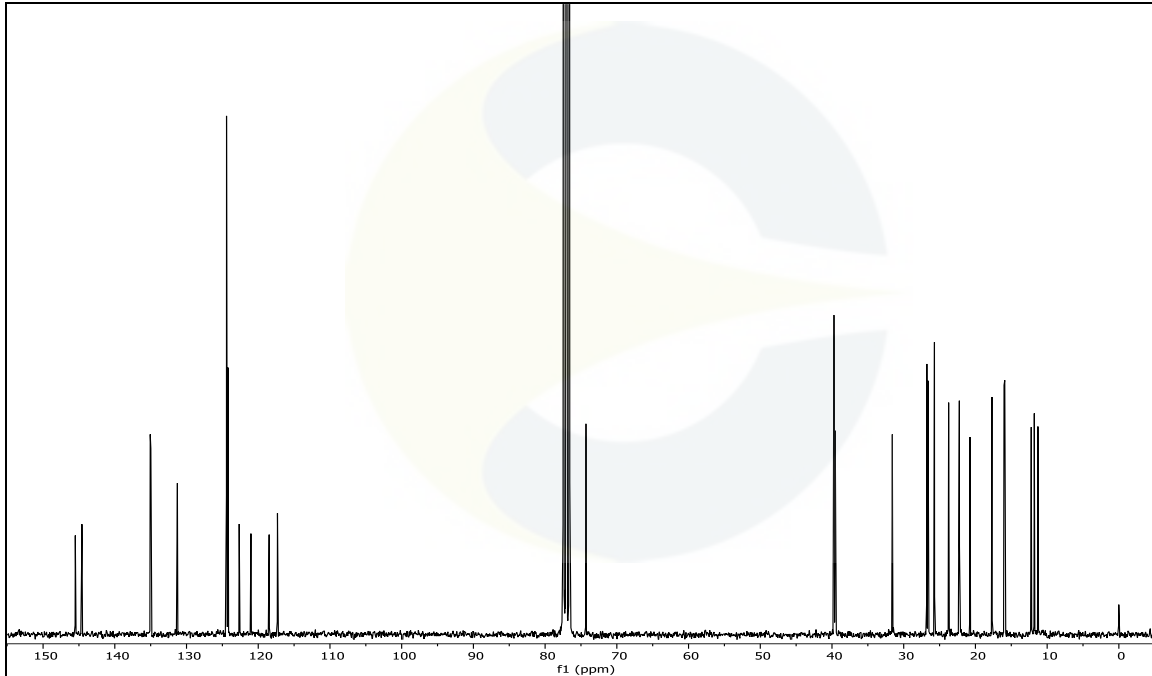


¹H-NMR SPECTRUM OF D-ALPHA-TOCOTRIENOL (CDXP-23-00063) IN CDCl₃ + TMS

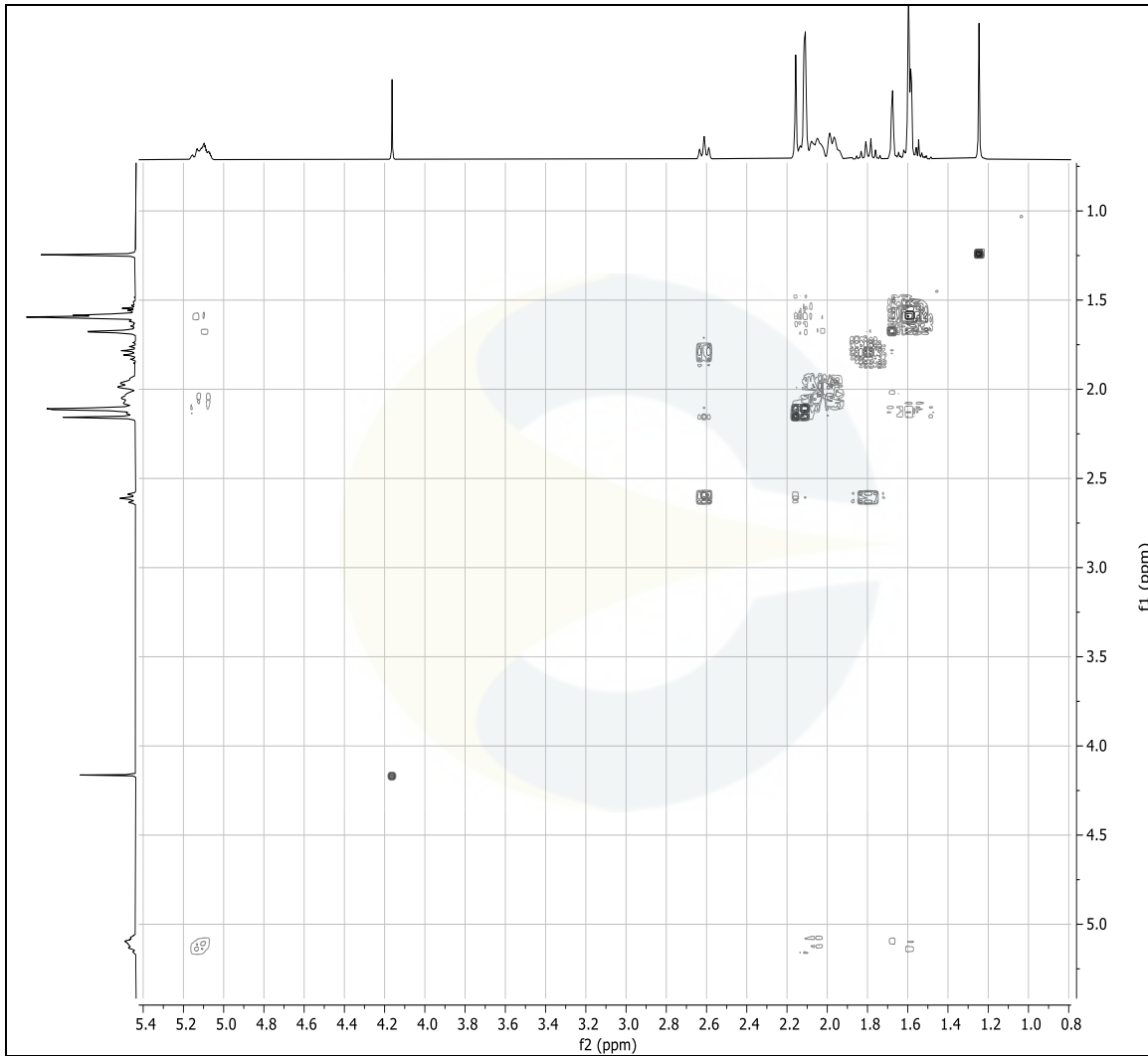


This document is the property of ChromaDex, Inc. and/or its relevant affiliates and contains confidential and proprietary material for the sole use of the intended recipient(s). Any review, use, distribution or disclosure by or to others is strictly prohibited.

¹³C-NMR SPECTRUM D-ALPHA-TOCOTRIENOL (CDXP-23-00063) IN CDCl₃ + TMS



This document is the property of ChromaDex, Inc. and/or its relevant affiliates and contains confidential and proprietary material for the sole use of the intended recipient(s). Any review, use, distribution or disclosure by or to others is strictly prohibited.

COSY-NMR SPECTRUM OF D-ALPHA-TOCOTRIENOL (CDXP-23-00063) IN CDCl₃ + TMS

REVISION HISTORY

| <u>Revision History</u> | <u>Date of Revision</u> | <u>Document/Changes</u> |
|-------------------------|-------------------------|-------------------------|
| 00 | 02/10/2023 | New report |

This document is the property of ChromaDex, Inc. and/or its relevant affiliates and contains confidential and proprietary material for the sole use of the intended recipient(s). Any review, use, distribution or disclosure by or to others is strictly prohibited.