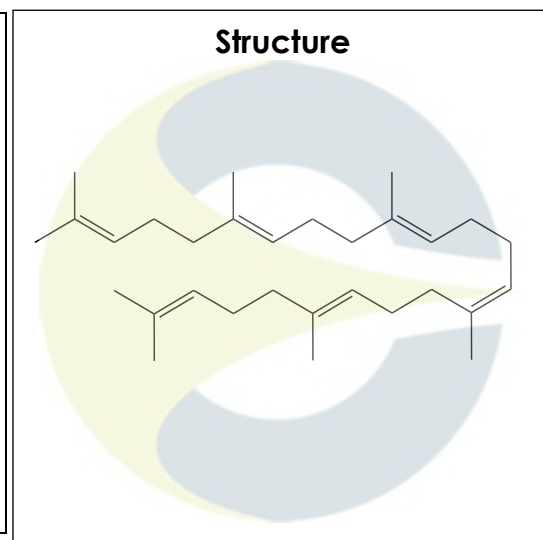


Certificate of Analysis
For Laboratory Use Only

PRODUCT NAME	Squalene
PART NUMBER	00019348
STANDARD TYPE	Analytical Standard (AS)
LOT NUMBER	00019348-I02
REPORT NUMBER	CDXA-RSS-1017-03
SAMPLE NUMBER	CDXA-06-0730
DATE OF SAMPLE	06/23/2006
DATE OF RE-EVALUATION	02/23/2010 (1 st); 03/05/2014 (2 nd); 11/12/2018 (3 rd); 08/19/2022 (4 th)
DATE OF REPORT	09/21/2022



CHEMICAL NAMES	(all-E)-2,6,10,15,19,23-Hexamethyl-2,6,10,14,18,22-tetracosahexaene; Spinacene
CHEMICAL FORMULA	C ₃₀ H ₅₀
MOLECULAR WEIGHT (MW)	410.73
CHEMICAL FAMILY	Triterpene
CAS NUMBER	[111-02-4]
EC#(EINECS)	203-826-1
RTECS	XB6010000

ANALYTICAL RESULTS

TEST	METHOD	SPECIFICATION	RESULT
GC	0.700.10.2.METH140	≥ 75%	95.4%
Mass Spectrum	0.700.10.2.METH140	Conforms	Conforms
Appearance	NA	NA	Liquid

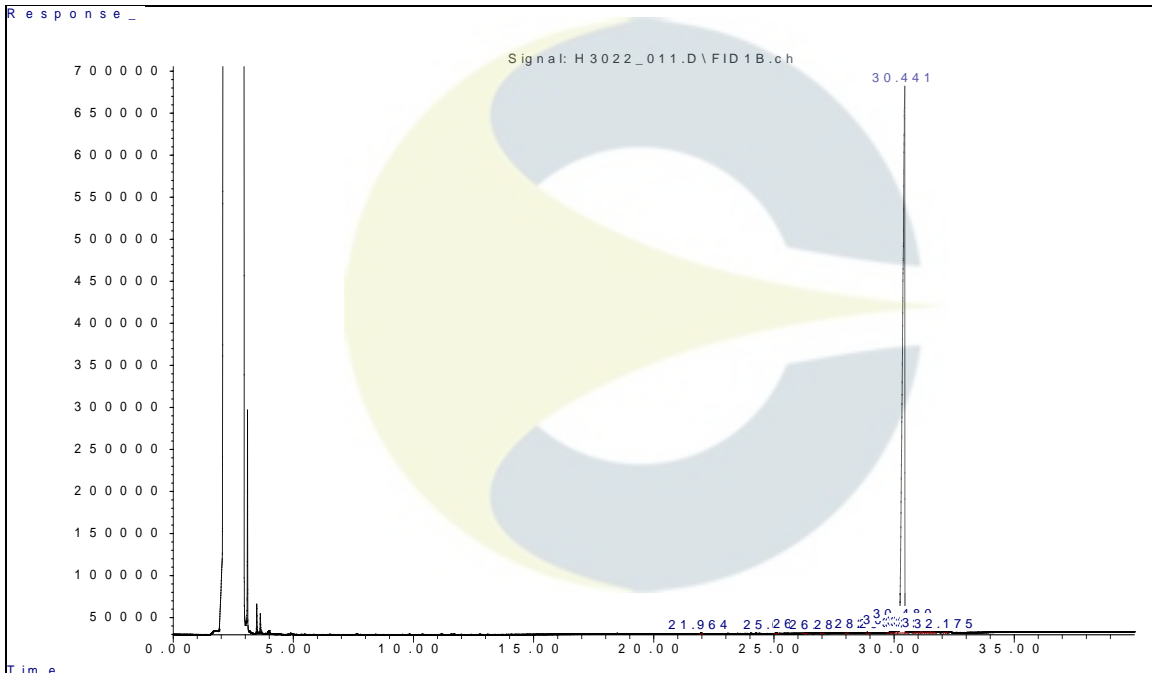
STORAGE CONDITIONS

STORAGE	+4 °C in a dry place.
EXPIRATION DATE	08/2027 under the above conditions.

This document is the property of ChromaDex, Inc. and/or its relevant affiliates and contains confidential and proprietary material for the sole use of the intended recipient(s). Any review, use, distribution or disclosure by or to others is strictly prohibited.

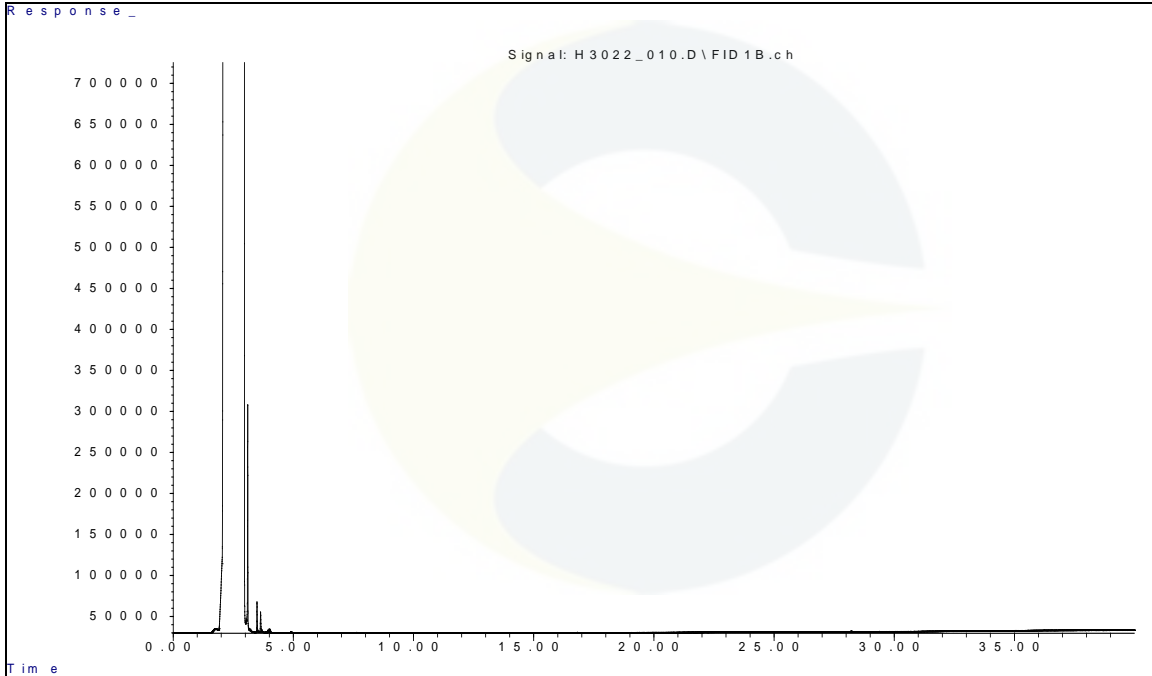
ANALYTICAL CONDITIONS

INSTRUMENT	AGILENT 7890B WITH FLAME IONIZATION DETECTOR (FID) AND AGILENT 5977B MASS SELECTIVE DETECTOR (MSD)
COLUMN	Phenomenex Zebron ZB-5plus, 30 m x 0.32 mm x 0.25 µm
CARRIER GAS	Helium
COLUMN TEMP.	Isothermic 40 °C for 5.0 minutes, then increasing at 10.0 °C/minute to 340 °C. Hold at 340 °C for 5.0 minutes.
FLOW RATE	2.0 mL/minute
INJECTOR TEMP.	300 °C
INJECTOR SPLIT RATIO	20:1
INJECTION VOL.	1.0 µL
INJECTION CONC.	2.5 mg/mL in hexane
DETECTION	FID (300 °C) & MSD (Transfer line 280 °C, Source 230 °C, Quad 150 °C)

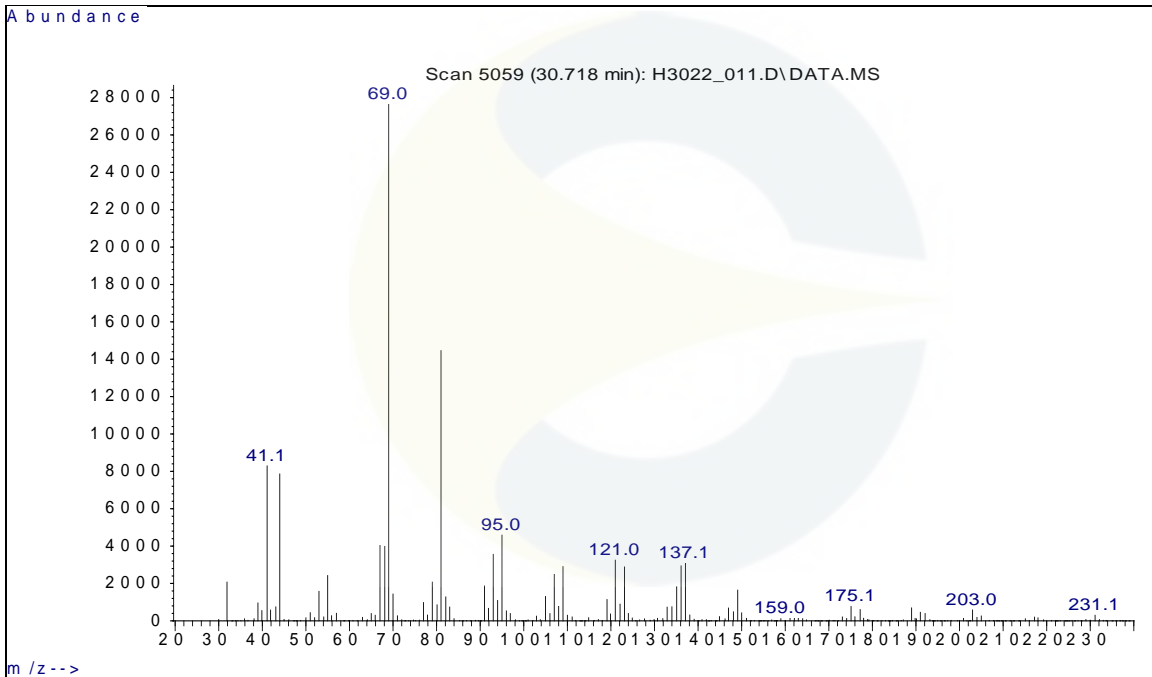
GC CHROMATOGRAM OF SQUALENE (CDXA-06-0730)


This document is the property of ChromaDex, Inc. and/or its relevant affiliates and contains confidential and proprietary material for the sole use of the intended recipient(s). Any review, use, distribution or disclosure by or to others is strictly prohibited.

GC CHROMATOGRAM OF DILUENT BLANK



MASS SPECTRUM OF SQUALENE (CDXA-06-0730)



This document is the property of ChromaDex, Inc. and/or its relevant affiliates and contains confidential and proprietary material for the sole use of the intended recipient(s). Any review, use, distribution or disclosure by or to others is strictly prohibited.

REVISION HISTORY

<u>Revision History</u>	<u>Date of Revision</u>	<u>Document/Changes</u>
00	03/15/2010	New report and 1 st re-evaluation
01	03/17/2014	Passed 2 nd re-evaluation; updated expiration date
02	12/10/2018	Passed third re-evaluation by GC/MS. Updated expiration date, analytical method, conditions, chromatograms and results. Removed melting point.
03	09/21/2022	Passed fourth re-evaluation by GC/MS. Updated expiration date, analytical methods, conditions, chromatograms and results.

This document is the property of ChromaDex, Inc. and/or its relevant affiliates and contains confidential and proprietary material for the sole use of the intended recipient(s). Any review, use, distribution or disclosure by or to others is strictly prohibited.