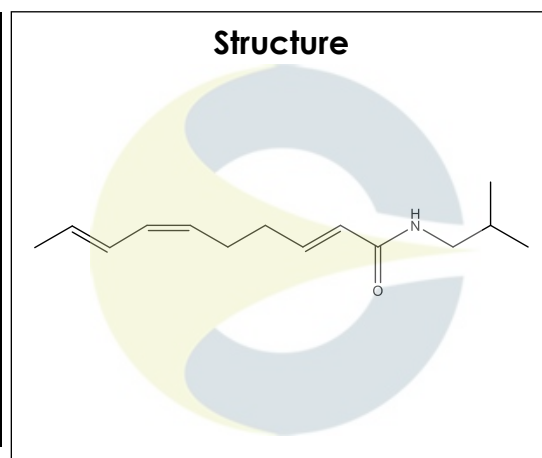


Certificate of Analysis

For Laboratory Use Only

PRODUCT NAME	Spilanthol
PART NUMBER	00019300
STANDARD TYPE	Primary (P)
LOT NUMBER	00019300-22S
REPORT NUMBER	CDXA-RSS-9955-00
SAMPLE NUMBER	CDXP-22-00874
DATE OF SAMPLE	09/26/2022
DATE OF REPORT	10/21/2022



CHEMICAL NAMES	(2E,6Z,8E)-N-(2-Methylpropyl)-2,6,8-Decatrienamamide; Affinin
CHEMICAL FORMULA	C ₁₄ H ₂₃ NO
MOLECULAR WEIGHT (MW)	221.34
CHEMICAL FAMILY	Enamides
CAS NUMBER	[25394-57-4]
EC#(EINECS)	NA
RTECS	HE1800000

ANALYTICAL RESULTS

TEST	METHOD	SPECIFICATION	RESULT
Adjusted Purity	NA	≥ 85%	89.6%
HPLC	0.700.10.2.METH22	≥ 90%	89.6%
NMR	0.700.12.4	Conforms to structure	Conforms to structure
Mass Spectrum	0.700.12.27	Conforms	Conforms
Residual Solvent*	USP <467>	NA	ND
Water	0.700.12.37	NA	ND
Appearance	NA	NA	Yellow liquid

*Testing performed at an ISO 17025 accredited subcontracted laboratory.

ADJUSTED PURITY: 89.6% IS BASED ON (100 - 0.0 SOLVENTS - 0.0 WATER) X 89.6% HPLC

STORAGE CONDITIONS

STORAGE	+4 °C in a dry place.
EXPIRATION DATE	09/2027 under the above conditions.

This document is the property of ChromaDex, Inc. and/or its relevant affiliates and contains confidential and proprietary material for the sole use of the intended recipient(s). Any review, use, distribution or disclosure by or to others is strictly prohibited.

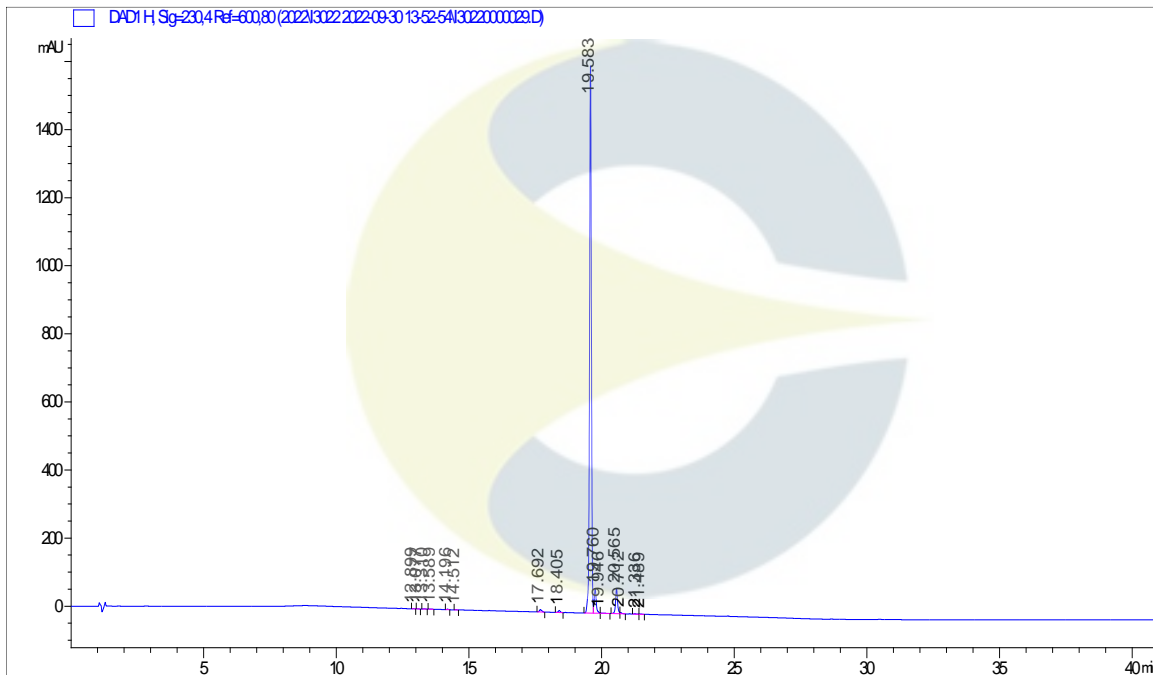
Certificate of Analysis

For Laboratory Use Only

ANALYTICAL CONDITIONS

INSTRUMENT	AGILENT 1260 HPLC UV-VIS (DAD); AB-SCIEX 6600 TRIPLE TOF
COLUMN	Phenomenex Luna C18(2) 150 x 2.00 mm, 5 µm particle size
MOBILE PHASE	A - 0.1% Trifluoroacetic acid in Ultrapure water, B - Acetonitrile; Isocratic 5% B for 5 minutes, then increasing to 95% B over 20 minutes. Hold at 95% B for 15 minutes, then decreasing to 5% B over 1 minute.
COLUMN TEMP.	60 °C
FLOW RATE	0.4 mL/minute
INJECTION VOL.	0.4 µL
INJECTION CONC.	1.0 mg/mL in Methanol
DETECTION	230 ± 2 nm

HPLC CHROMATOGRAM OF SPILANTHOL (CDXP-22-00874)

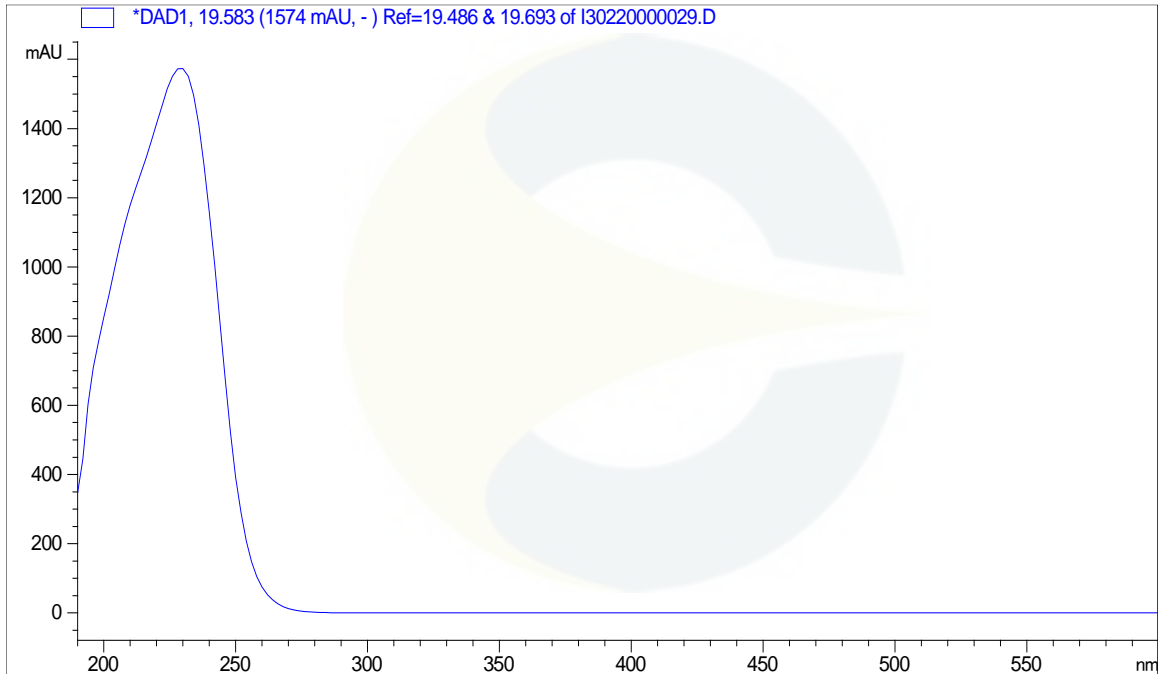


This document is the property of ChromaDex, Inc. and/or its relevant affiliates and contains confidential and proprietary material for the sole use of the intended recipient(s). Any review, use, distribution or disclosure by or to others is strictly prohibited.

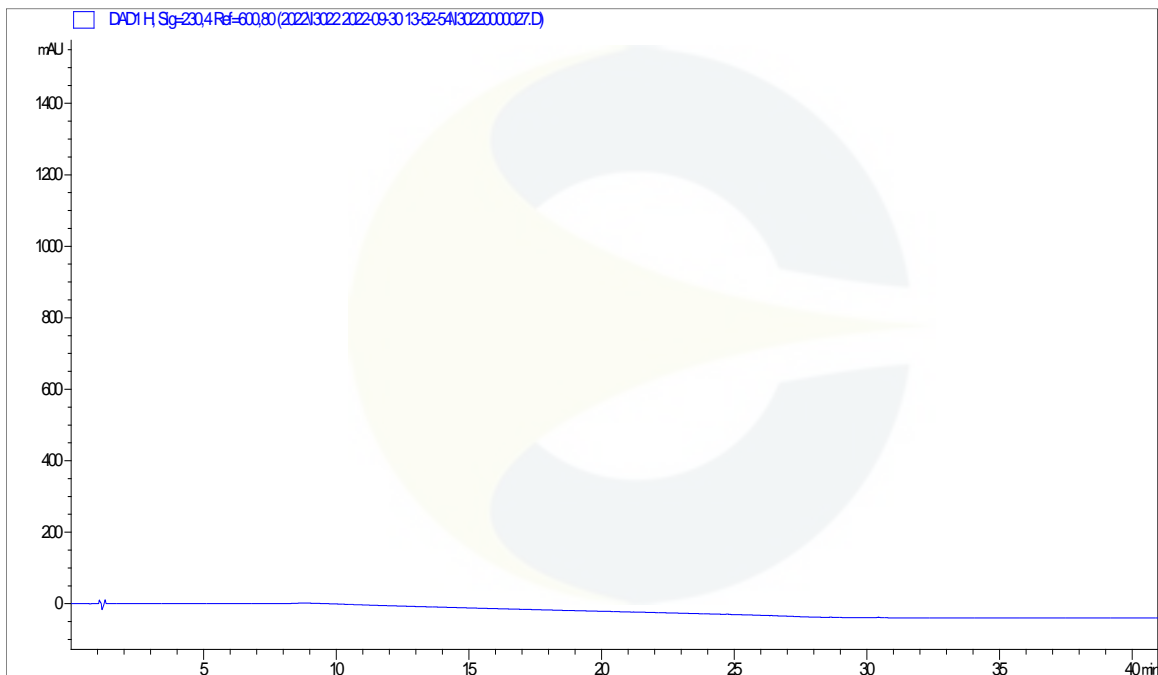
Certificate of Analysis

For Laboratory Use Only

UV SPECTRUM AT RT = 19.6 MINUTES

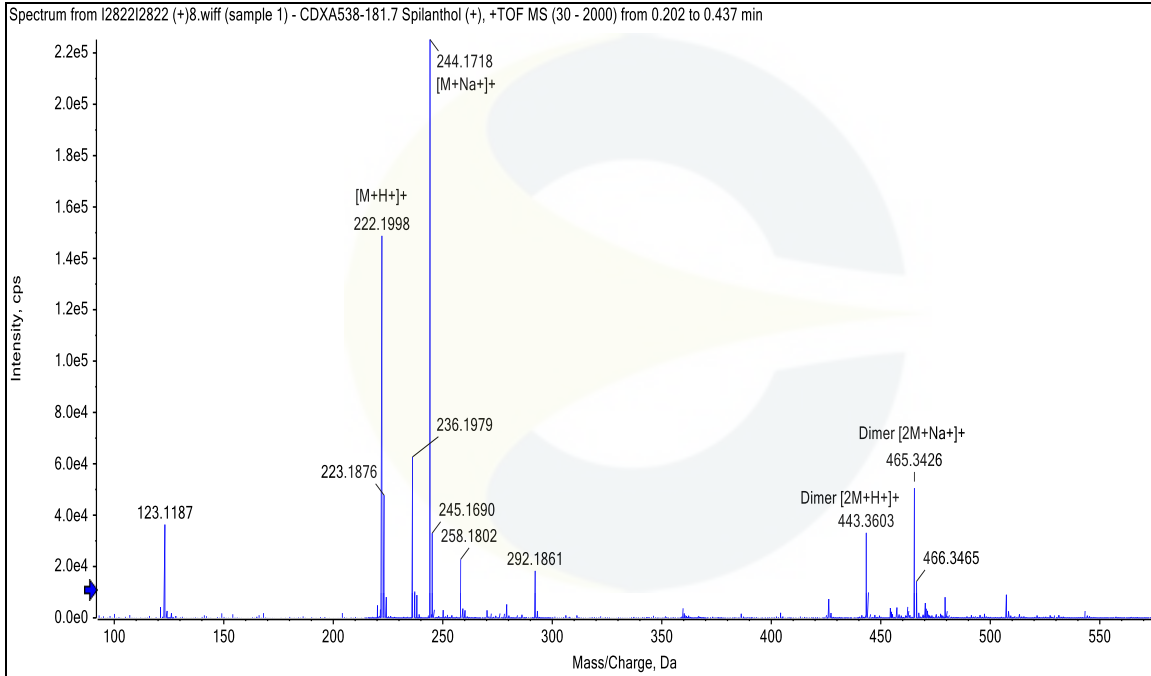


HPLC CHROMATOGRAM OF DILUENT BLANK

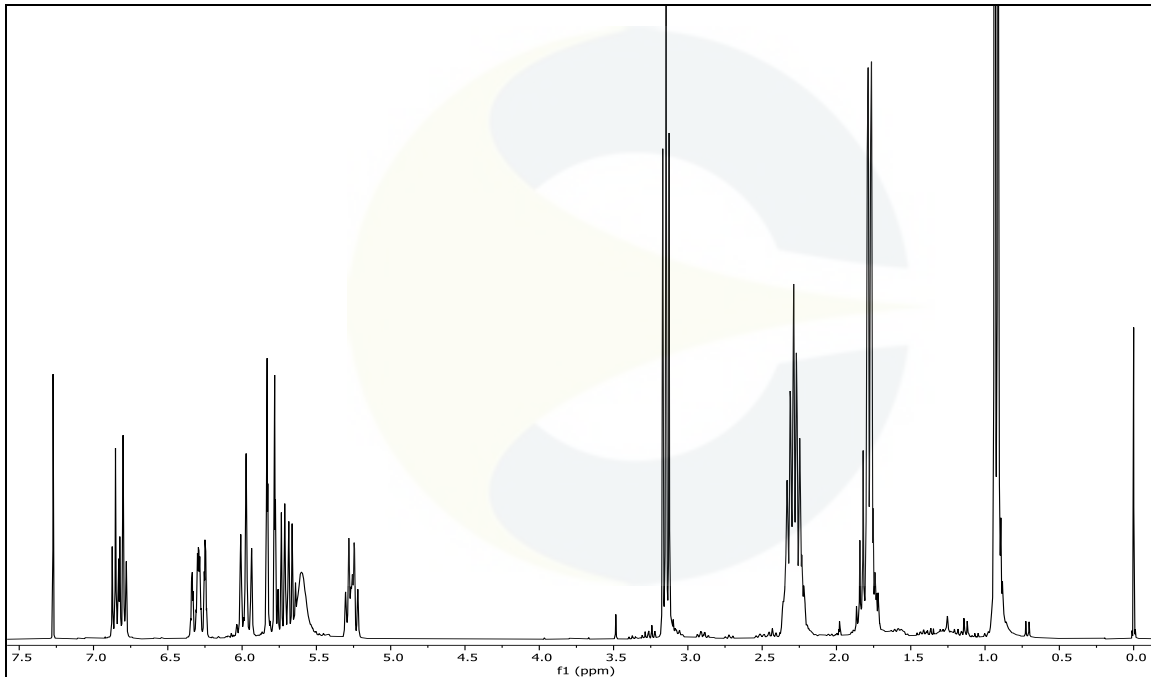


This document is the property of ChromaDex, Inc. and/or its relevant affiliates and contains confidential and proprietary material for the sole use of the intended recipient(s). Any review, use, distribution or disclosure by or to others is strictly prohibited.

MASS SPECTRUM OF SPILANTHOL (CDXP-22-00874)



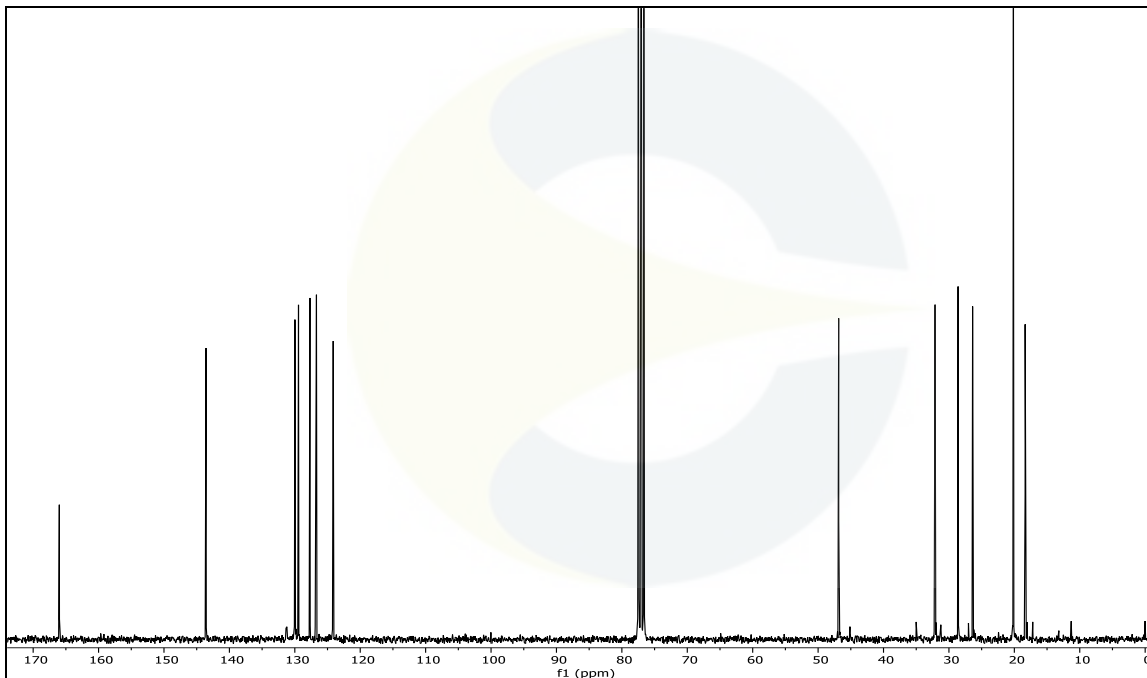
¹H-NMR SPECTRUM OF SPILANTHOL (CDXP-22-00874) IN CDCl₃ + TMS



This document is the property of ChromaDex, Inc. and/or its relevant affiliates and contains confidential and proprietary material for the sole use of the intended recipient(s). Any review, use, distribution or disclosure by or to others is strictly prohibited.

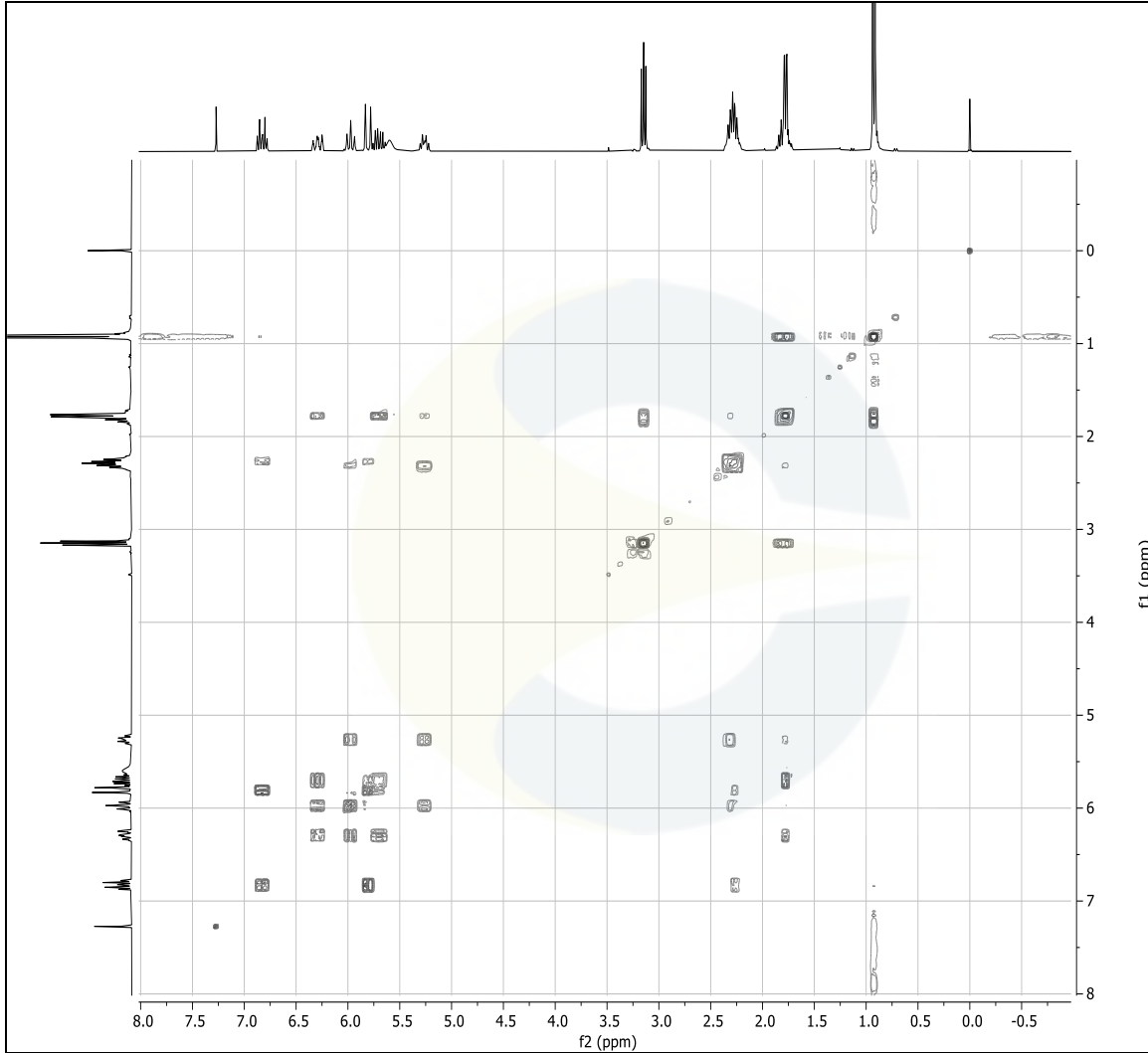
Certificate of Analysis

For Laboratory Use Only

 ^{13}C -NMR SPECTRUM SPILANTHOL (CDXP-22-00874) IN CDCl_3 + TMS

This document is the property of ChromaDex, Inc. and/or its relevant affiliates and contains confidential and proprietary material for the sole use of the intended recipient(s). Any review, use, distribution or disclosure by or to others is strictly prohibited.

COSY-NMR SPECTRUM OF SPILANTHOL (CDXP-22-00874) IN CDCl₃ + TMS



REVISION HISTORY

<u>Revision History</u>	<u>Date of Revision</u>	<u>Document/Changes</u>
00	10/21/2022	New report

This document is the property of ChromaDex, Inc. and/or its relevant affiliates and contains confidential and proprietary material for the sole use of the intended recipient(s). Any review, use, distribution or disclosure by or to others is strictly prohibited.