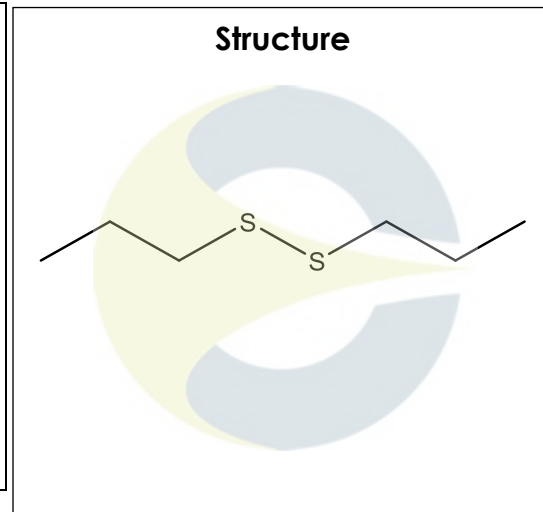


Certificate of Analysis
For Laboratory Use Only

| | |
|------------------------------|--|
| PRODUCT NAME | Propyl disulfide |
| PART NUMBER | 00016280 |
| STANDARD TYPE | Analytical Standard (AS) |
| LOT NUMBER | 00016280-HEV |
| REPORT NUMBER | CDXA-RSS-5318-02 |
| SAMPLE NUMBER | CDXP-12-8756 |
| DATE OF SAMPLE | 12/04/2012 |
| DATE OF RE-EVALUATION | 09/06/2017 (1 st); 01/27/2022 (2 nd) |
| DATE OF REPORT | 02/04/2022 |



| | |
|------------------------------|---|
| CHEMICAL NAMES | 4,5-Dithiaoctane; Dipropyl disulfide; Di-n-propyl disulfide |
| CHEMICAL FORMULA | C ₆ H ₁₄ S ₂ |
| MOLECULAR WEIGHT (MW) | 150.31 |
| CHEMICAL FAMILY | Sulfides |
| CAS NUMBER | [629-19-6] |
| EC#(EINECS) | 211-079-8 |
| RTECS | JO1955000 |

ANALYTICAL RESULTS

| TEST | METHOD | SPECIFICATION | RESULT |
|---------------|--------------------|---------------|--------------|
| GC | 0.700.10.2.METH140 | ≥ 75% | 99.1% |
| Mass Spectrum | 0.700.10.2.METH140 | Conforms | Conforms |
| Appearance | NA | NA | Clear liquid |

STORAGE CONDITIONS

| | |
|------------------------|-------------------------------------|
| STORAGE | +4 °C in a dry place. |
| EXPIRATION DATE | 01/2027 under the above conditions. |

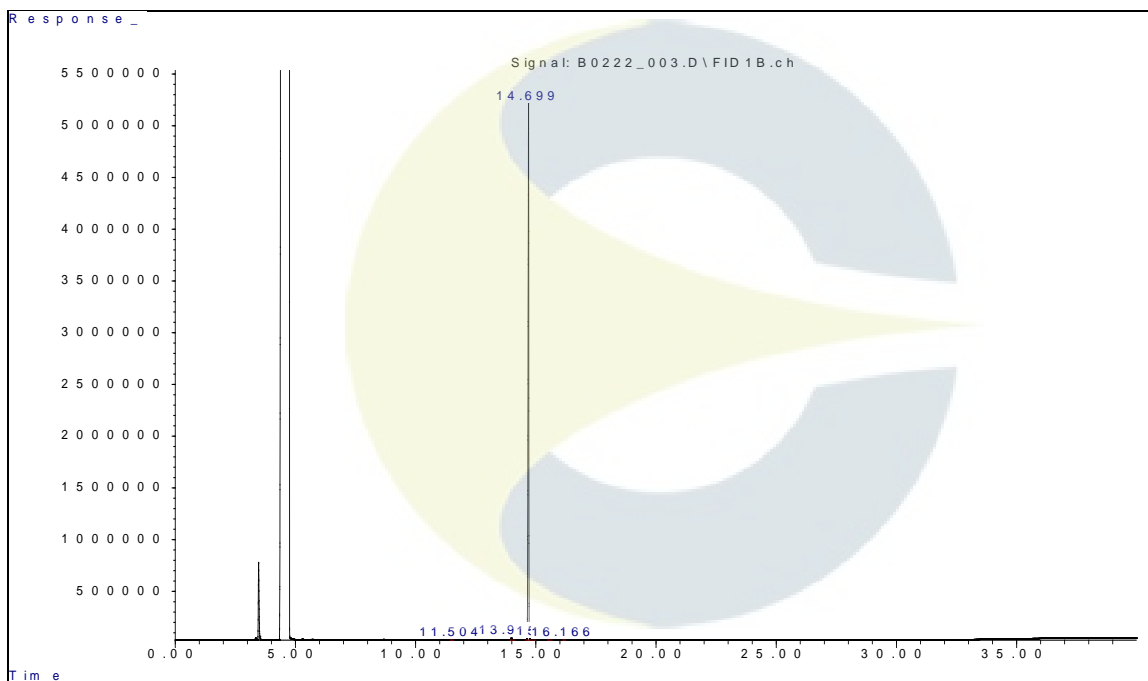
This document is the property of ChromaDex, Inc. and/or its relevant affiliates and contains confidential and proprietary material for the sole use of the intended recipient(s). Any review, use, distribution or disclosure by or to others is strictly prohibited.

Certificate of Analysis

For Laboratory Use Only

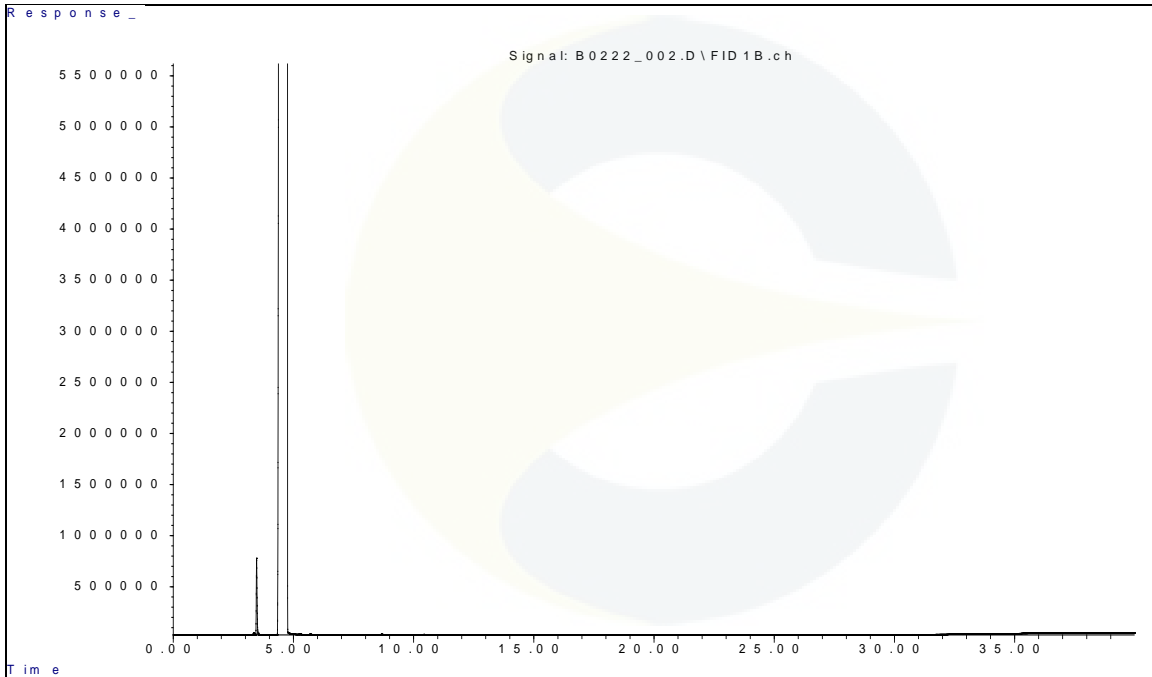
ANALYTICAL CONDITIONS

| | |
|-----------------------------|--|
| INSTRUMENT | AGILENT 7890B WITH FLAME IONIZATION DETECTOR (FID) AND AGILENT 5977B MASS SELECTIVE DETECTOR (MSD) |
| COLUMN | Phenomenex Zebron ZB-5plus, 30 m x 0.32 mm x 0.25 µm |
| CARRIER GAS | Helium |
| COLUMN TEMP. | Isothermic 40 °C for 5.0 minutes, then increasing at 10.0 °C/minute to 340 °C. Hold at 340 °C for 5.0 minutes. |
| FLOW RATE | 2.0 mL/minute |
| INJECTOR TEMP. | 300 °C |
| INJECTOR SPLIT RATIO | 20:1 |
| INJECTION VOL. | 1.0 µL |
| INJECTION CONC. | 2.4 mg/mL in Chloroform |
| DETECTION | FID (300 °C) & MSD (Transfer line 280 °C, Source 230 °C, Quad 150 °C) |

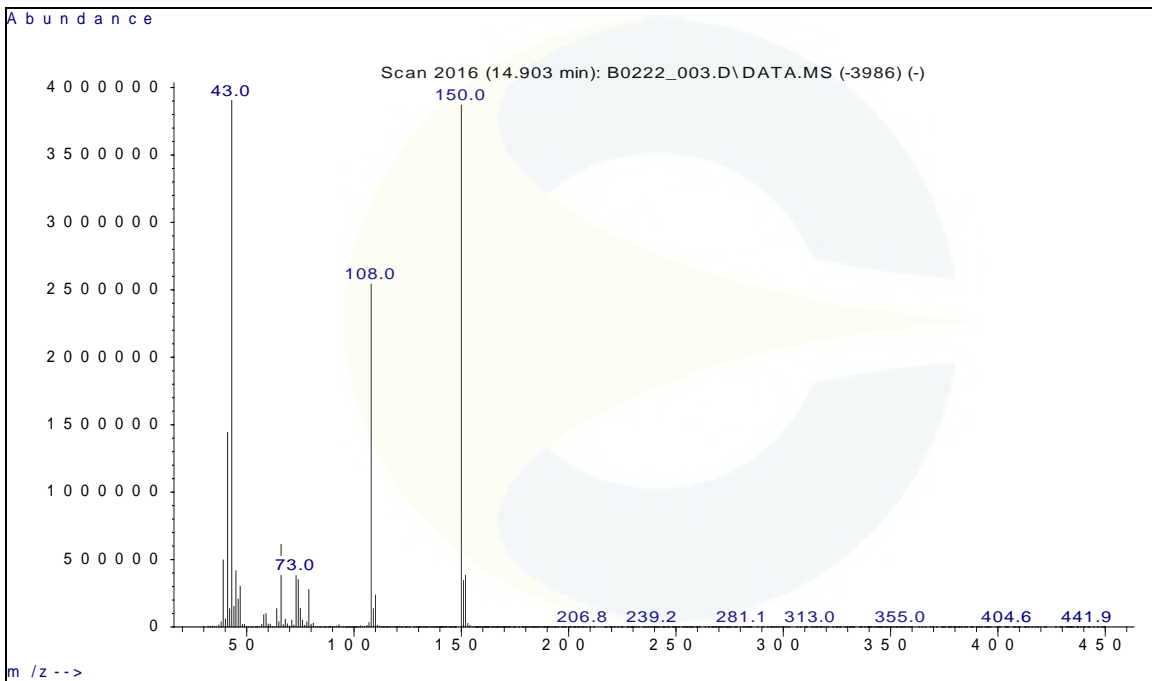
GC CHROMATOGRAM OF PROPYL DISULFIDE (CDXP-12-8756)


This document is the property of ChromaDex, Inc. and/or its relevant affiliates and contains confidential and proprietary material for the sole use of the intended recipient(s). Any review, use, distribution or disclosure by or to others is strictly prohibited.

GC CHROMATOGRAM OF DILUENT BLANK



MASS SPECTRUM OF PROPYL DISULFIDE (CDXP-12-8756)



This document is the property of ChromaDex, Inc. and/or its relevant affiliates and contains confidential and proprietary material for the sole use of the intended recipient(s). Any review, use, distribution or disclosure by or to others is strictly prohibited.

REVISION HISTORY

| <u>Revision History</u> | <u>Date of Revision</u> | <u>Document/Changes</u> |
|-------------------------|-------------------------|---|
| 00 | 12/10/2012 | New report |
| 01 | 10/13/2017 | Updated grade to Analytical standards (AS). Updated results and chromatographs, and updated expiry, |
| 02 | 02/04/2022 | Updated results, chromatograms, updated expiry and purity. |

This document is the property of ChromaDex, Inc. and/or its relevant affiliates and contains confidential and proprietary material for the sole use of the intended recipient(s). Any review, use, distribution or disclosure by or to others is strictly prohibited.