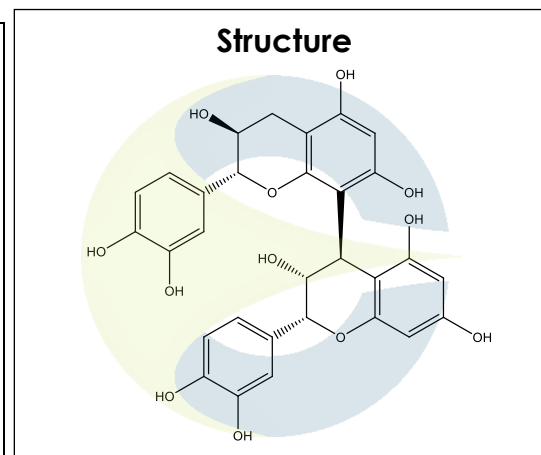


Certificate of Analysis

For Laboratory Use Only

PRODUCT NAME	Procyanidin B1
PART NUMBER	00016230
STANDARD TYPE	Primary (P)
LOT NUMBER	00016230-00303
REPORT NUMBER	CDXA-RSS-9775-00
SAMPLE NUMBER	CDXP-22-00303
DATE OF SAMPLE	04/05/2022
DATE OF REPORT	05/10/2022



CHEMICAL NAMES	(2R,2'R,3R,3'S,4R)-2,2'-bis(3,4-Dihydroxyphenyl)-3,3',4,4'-tetrahydro-(4,8'-Bi-2H-1-benzopyran)-3,3',5,5',7,7'-hexol; (-)-Epicatechin-(4β-8)-(+)-catechin; Proanthocyanidin B ₁
CHEMICAL FORMULA	C ₃₀ H ₂₆ O ₁₂
MOLECULAR WEIGHT (MW)	578.52
CHEMICAL FAMILY	Proanthocyanidins
CAS NUMBER	[20315-25-7]
EC#(EINECS)	NA
RTECS	DT4325120

ANALYTICAL RESULTS

TEST	METHOD	SPECIFICATION	RESULT
Adjusted Purity	NA	≥ 85%	88.0%
HPLC	0.700.10.2.METH22	≥ 90%	97.9%
NMR	30.1-04-1.0-00733	Conforms to structure	Conforms to structure
Mass Spectrum	99.1-04-3.0-000126	Conforms	Conforms
Residual Solvent*	99.1-CDXA-3.0-000621	NA	ND
Water	0.700.12.37	NA	10.1%
Appearance	NA	NA	White powder

*Testing performed at an ISO 17025 accredited subcontracted laboratory.

ADJUSTED PURITY: 88.0% IS BASED ON (100 - 0.0 SOLVENTS - 10.1 WATER) X 97.9% HPLC

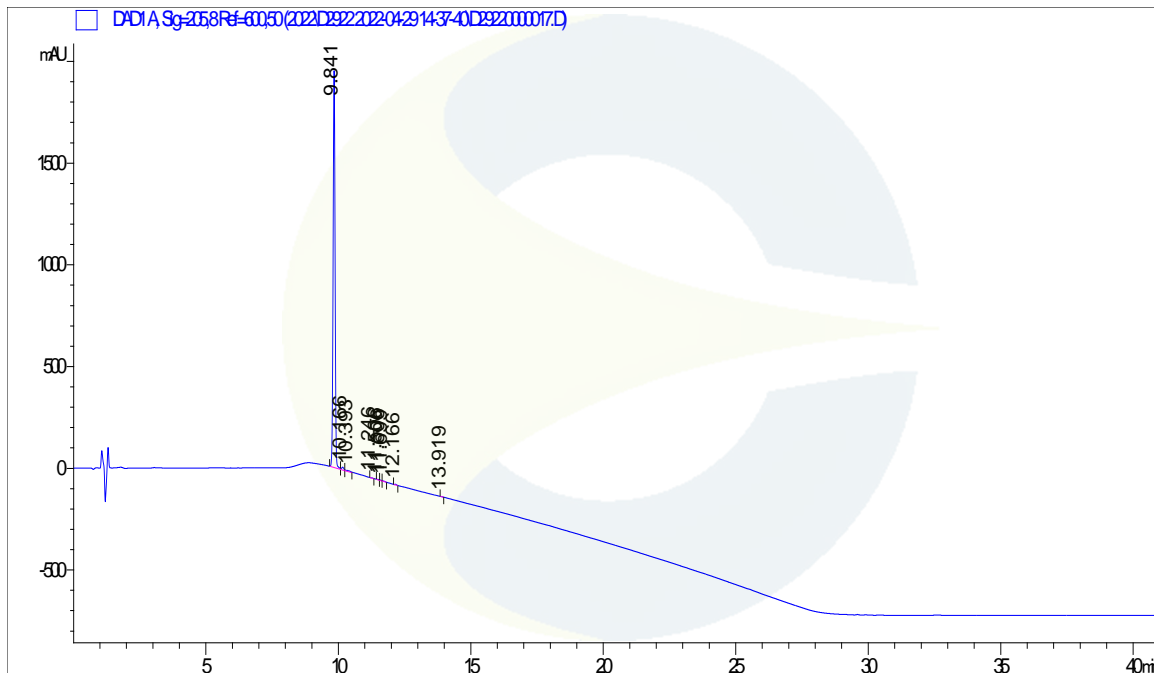
STORAGE CONDITIONS

STORAGE	+4 °C in a dry place.
EXPIRATION DATE	04/2027 under the above conditions.

This document is the property of ChromaDex, Inc. and/or its relevant affiliates and contains confidential and proprietary material for the sole use of the intended recipient(s). Any review, use, distribution or disclosure by or to others is strictly prohibited.

Certificate of Analysis
For Laboratory Use Only
ANALYTICAL CONDITIONS

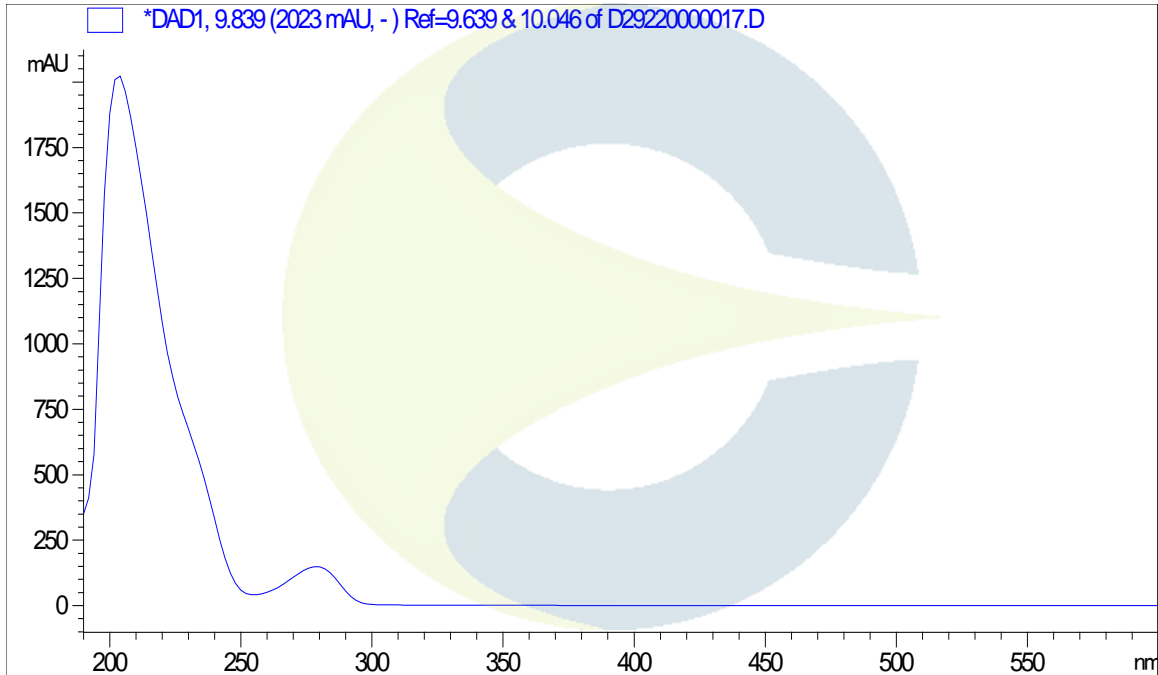
INSTRUMENT	AGILENT 1260 HPLC UV-VIS (DAD); AB-SCIEX 6600 TRIPLE TOF
COLUMN	Phenomenex Luna C18(2) 150 x 2.00 mm, 5 µm particle size
MOBILE PHASE	A - 0.1% Trifluoroacetic acid in Ultrapure water, B - Acetonitrile; Isocratic 5% B for 5 minutes, then increasing to 95% B over 20 minutes. Hold at 95% B for 15 minutes, then decreasing to 5% B over 1 minute.
COLUMN TEMP.	60 °C
FLOW RATE	0.4 mL/minute
INJECTION VOL.	0.4 µL
INJECTION CONC.	1.0 mg/mL in Methanol
DETECTION	205 ± 4 nm

HPLC CHROMATOGRAM OF PROCYANIDIN B1 (CDXP-22-00303)


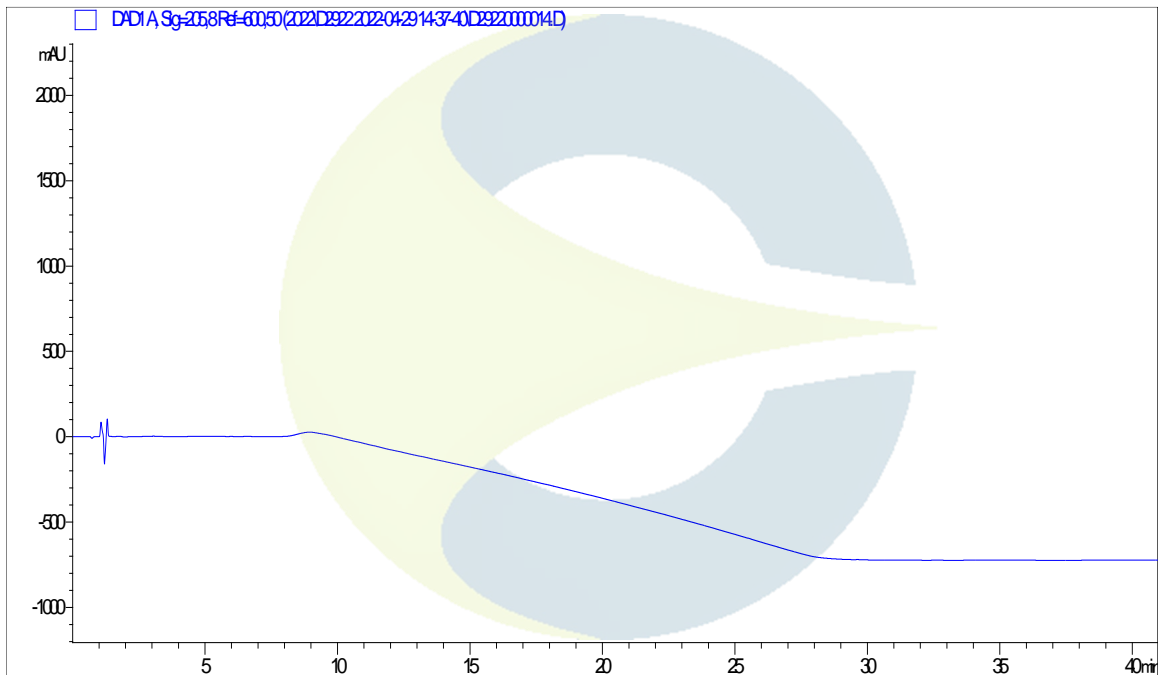
This document is the property of ChromaDex, Inc. and/or its relevant affiliates and contains confidential and proprietary material for the sole use of the intended recipient(s). Any review, use, distribution or disclosure by or to others is strictly prohibited.

Certificate of Analysis For Laboratory Use Only

UV SPECTRUM AT RT = 9.8 MINUTES



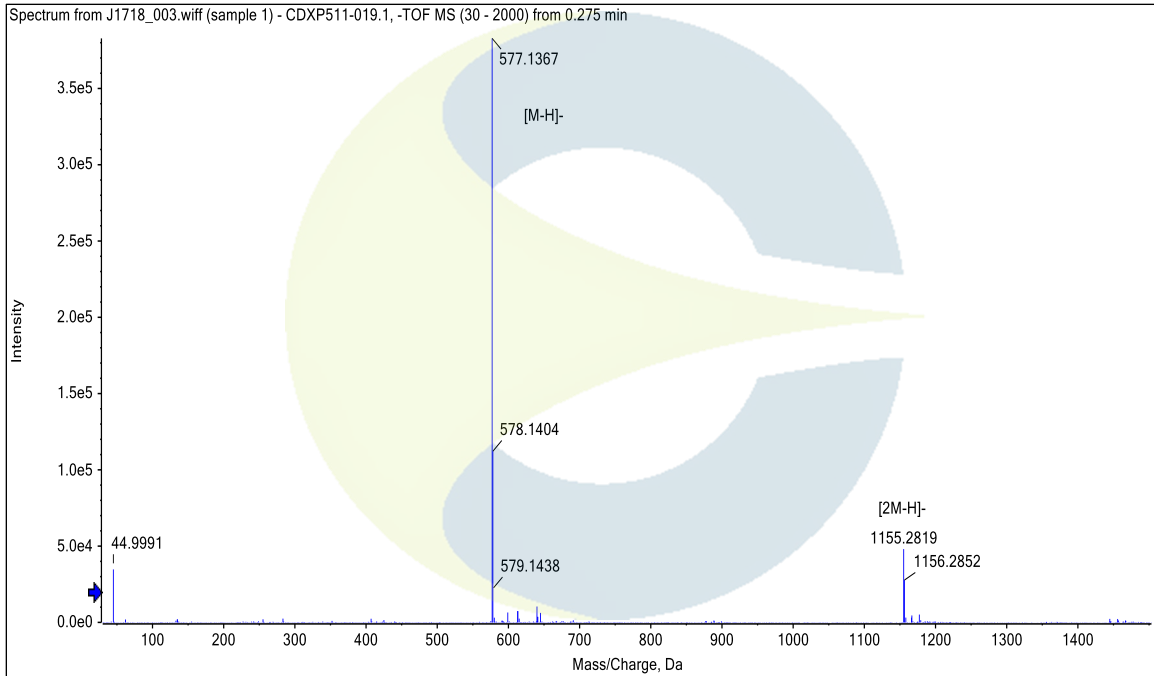
HPLC CHROMATOGRAM OF DILUENT BLANK



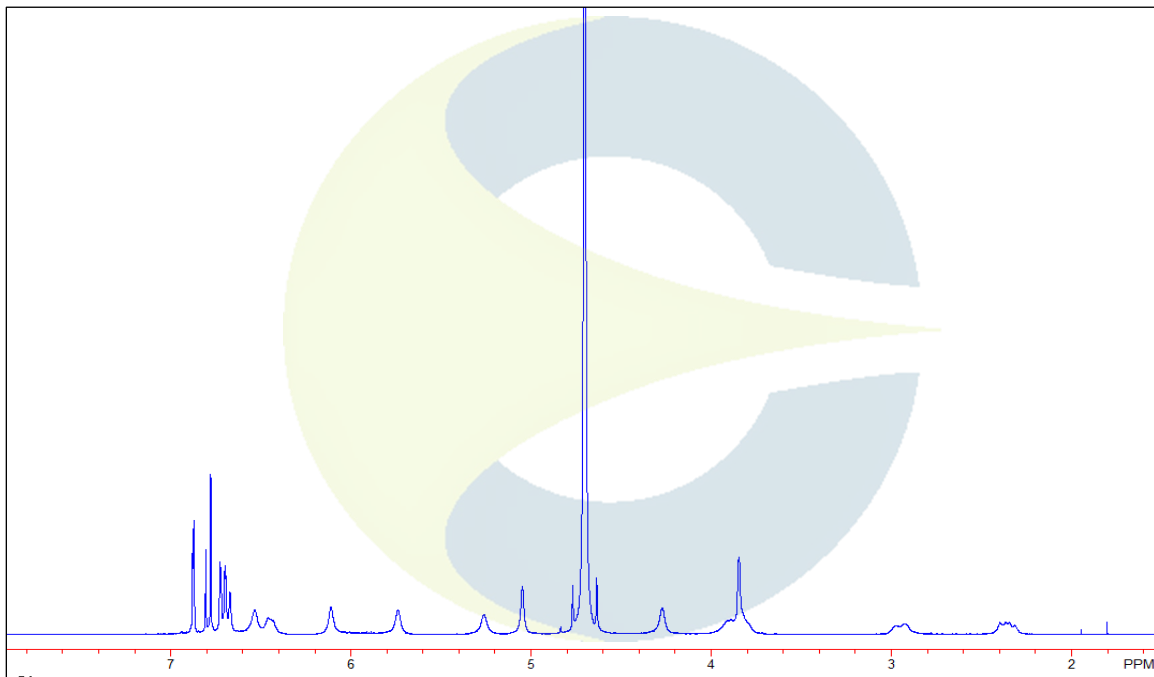
This document is the property of ChromaDex, Inc. and/or its relevant affiliates and contains confidential and proprietary material for the sole use of the intended recipient(s). Any review, use, distribution or disclosure by or to others is strictly prohibited.

Certificate of Analysis For Laboratory Use Only

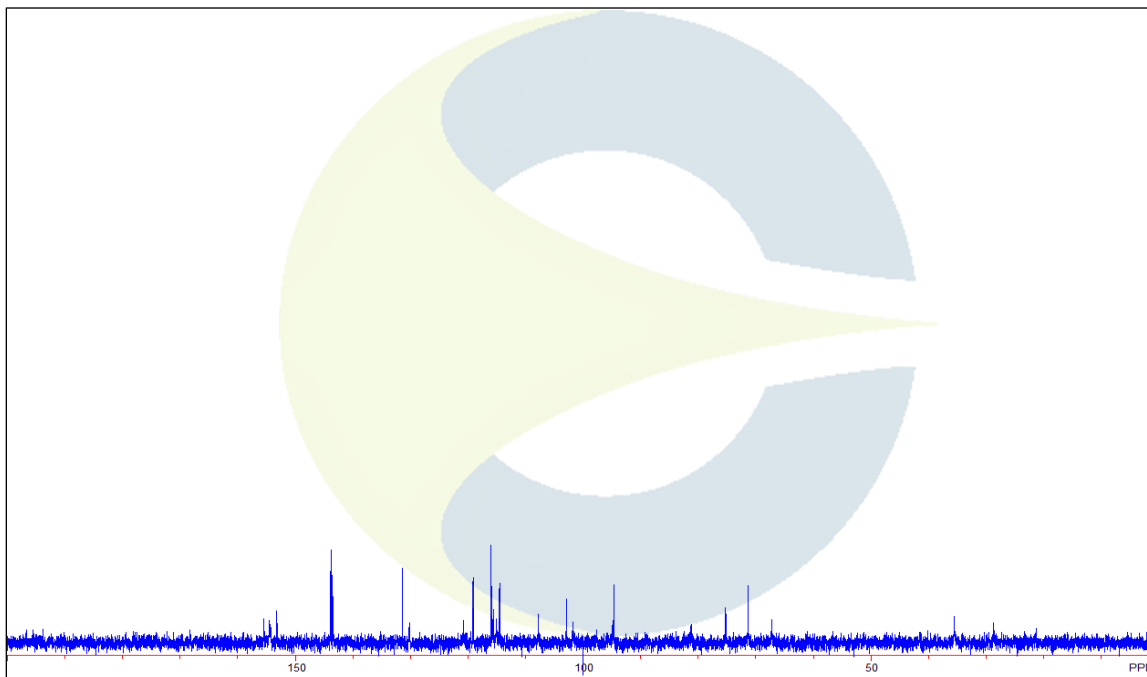
MASS SPECTRUM OF PROCYANIDIN B1 (CDXP-22-00303)



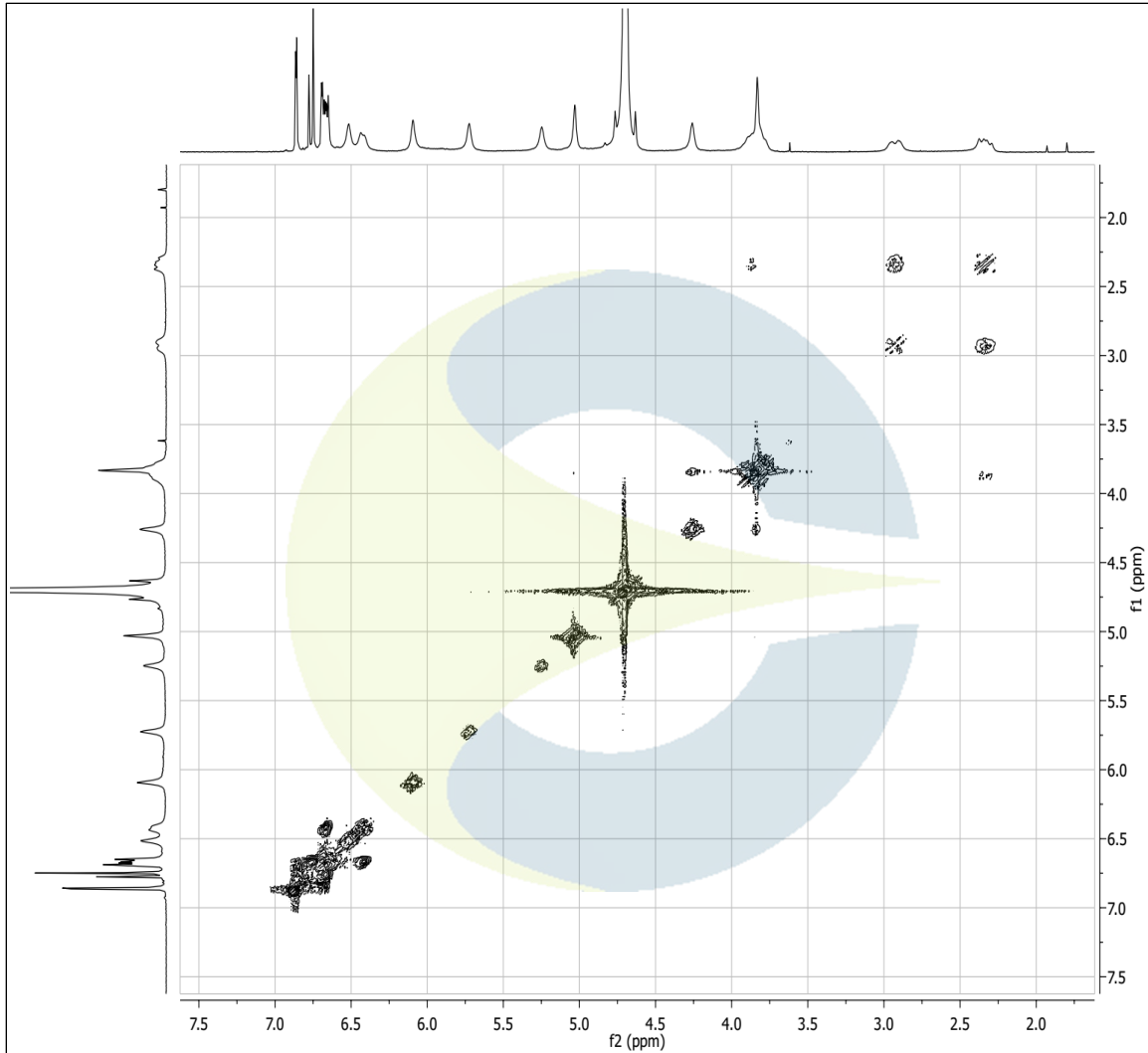
¹H-NMR SPECTRUM OF PROCYANIDIN B1 (CDXP-22-00303) IN D₂O



This document is the property of ChromaDex, Inc. and/or its relevant affiliates and contains confidential and proprietary material for the sole use of the intended recipient(s). Any review, use, distribution or disclosure by or to others is strictly prohibited.

^{13}C -NMR SPECTRUM PROCYANIDIN B1 (CDXP-22-00303) IN D_2O 

This document is the property of ChromaDex, Inc. and/or its relevant affiliates and contains confidential and proprietary material for the sole use of the intended recipient(s). Any review, use, distribution or disclosure by or to others is strictly prohibited.

Certificate of Analysis
For Laboratory Use Only
COSY-NMR SPECTRUM OF PROCYANIDIN B1 (CDXP-22-00303) IN D₂O

REVISION HISTORY

<u>Revision History</u>	<u>Date of Revision</u>	<u>Document/Changes</u>
00	05/10/2022	New report

This document is the property of ChromaDex, Inc. and/or its relevant affiliates and contains confidential and proprietary material for the sole use of the intended recipient(s). Any review, use, distribution or disclosure by or to others is strictly prohibited.