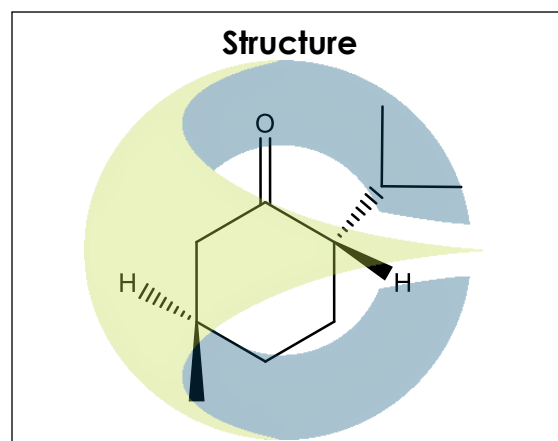


**Certificate of Analysis**

For Laboratory Use Only

<b>PRODUCT NAME</b>	(-)-Menthone
<b>PART NUMBER</b>	00013969
<b>STANDARD TYPE</b>	Analytical Standard (AS)
<b>LOT NUMBER</b>	00013969-120
<b>REPORT NUMBER</b>	CDXA-RSS-9882-00
<b>SAMPLE NUMBER</b>	CDXP-22-00706
<b>DATE OF SAMPLE</b>	08/10/2022
<b>DATE OF REPORT</b>	08/16/2022



<b>CHEMICAL NAMES</b>	(2S,5R)-5-methyl-2-(1-methylethyl)-Cyclohexanone; trans-(-)-p-Methan-3-one
<b>CHEMICAL FORMULA</b>	C <sub>10</sub> H <sub>18</sub> O
<b>MOLECULAR WEIGHT (MW)</b>	154.25
<b>CHEMICAL FAMILY</b>	Ketones
<b>CAS NUMBER</b>	[14073-97-3]
<b>EC#(EINECS)</b>	237-926-1
<b>RTECS</b>	GW1770200

**ANALYTICAL RESULTS**

TEST	METHOD	SPECIFICATION	RESULT
GC	0.700.10.2.METH140	≥ 75%	81.6%
Mass Spectrum	0.700.10.2.METH140	Conforms	Conforms
Appearance	NA	NA	Clear Liquid

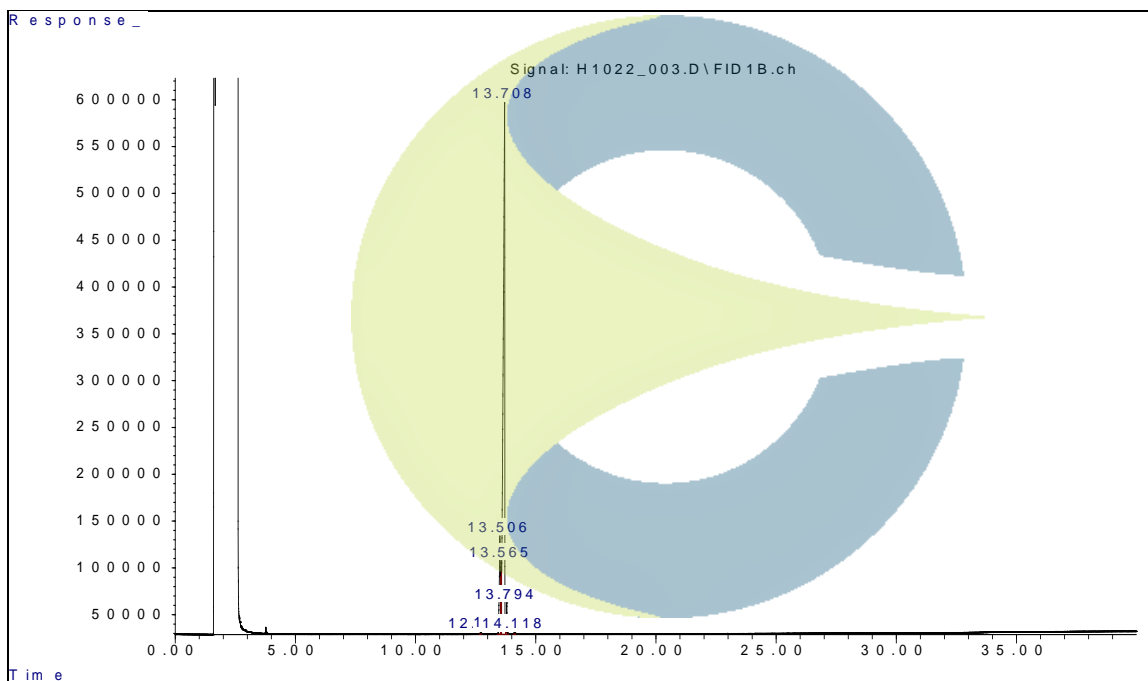
**STORAGE CONDITIONS**

<b>STORAGE</b>	+4 °C in a dry place.
<b>EXPIRATION DATE</b>	08/2027 under the above conditions.

This document is the property of ChromaDex, Inc. and/or its relevant affiliates and contains confidential and proprietary material for the sole use of the intended recipient(s). Any review, use, distribution or disclosure by or to others is strictly prohibited.

**Certificate of Analysis**
*For Laboratory Use Only*
**ANALYTICAL CONDITIONS**

<b>INSTRUMENT</b>	AGILENT 7890B WITH FLAME IONIZATION DETECTOR (FID) AND AGILENT 5977B MASS SELECTIVE DETECTOR (MSD)
<b>COLUMN</b>	Phenomenex Zebron ZB-5plus, 30 m x 0.32 mm x 0.25 $\mu$ m connected to an Agilent deactivated fused silica retention gap: 10 m x 0.18 mm line to MSD.
<b>CARRIER GAS</b>	Helium
<b>COLUMN TEMP.</b>	Isothermic 40 $^{\circ}$ C for 5.0 minutes, then increasing at 10.0 $^{\circ}$ C/minute to 340 $^{\circ}$ C. Hold at 340 $^{\circ}$ C for 5.0 minutes.
<b>FLOW RATE</b>	2.0 mL/minute
<b>INJECTOR TEMP.</b>	300 $^{\circ}$ C
<b>INJECTOR SPLIT RATIO</b>	20:1
<b>INJECTION VOL.</b>	1.0 $\mu$ L
<b>INJECTION CONC.</b>	2.1 mg/mL in Methanol
<b>DETECTION</b>	FID (300 $^{\circ}$ C) & MSD (Transfer line 280 $^{\circ}$ C, Source 230 $^{\circ}$ C, Quad 150 $^{\circ}$ C)

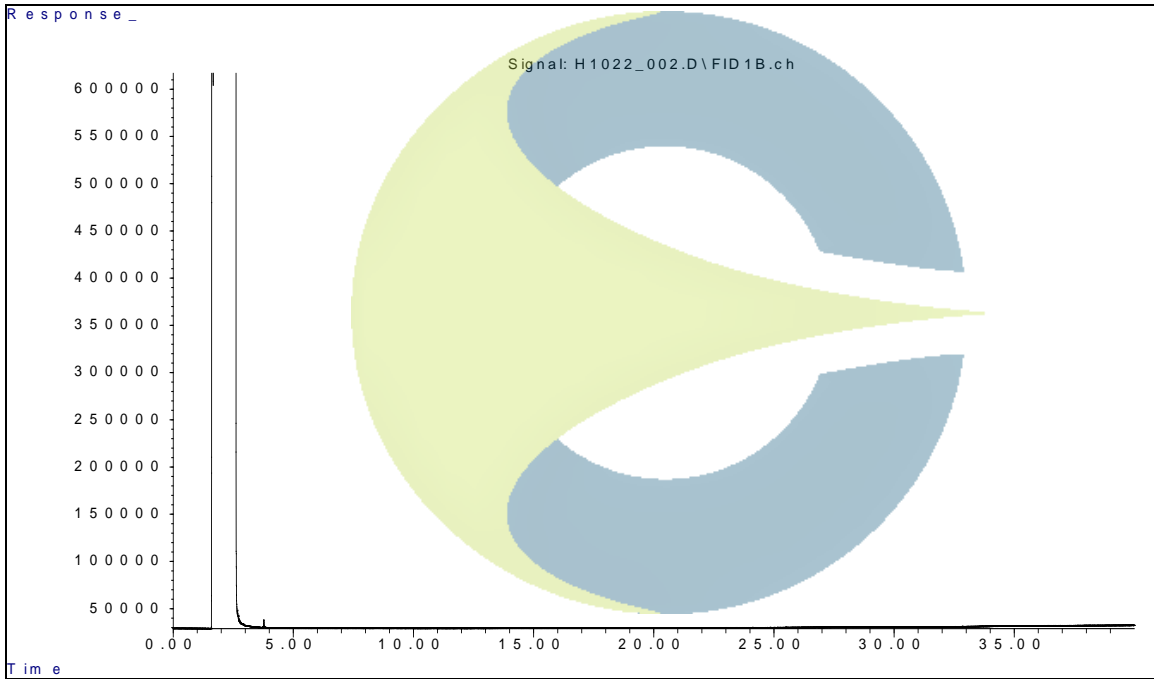
**GC CHROMATOGRAM OF (-)-MENTHONE (CDXP-22-00706)**


This document is the property of ChromaDex, Inc. and/or its relevant affiliates and contains confidential and proprietary material for the sole use of the intended recipient(s). Any review, use, distribution or disclosure by or to others is strictly prohibited.

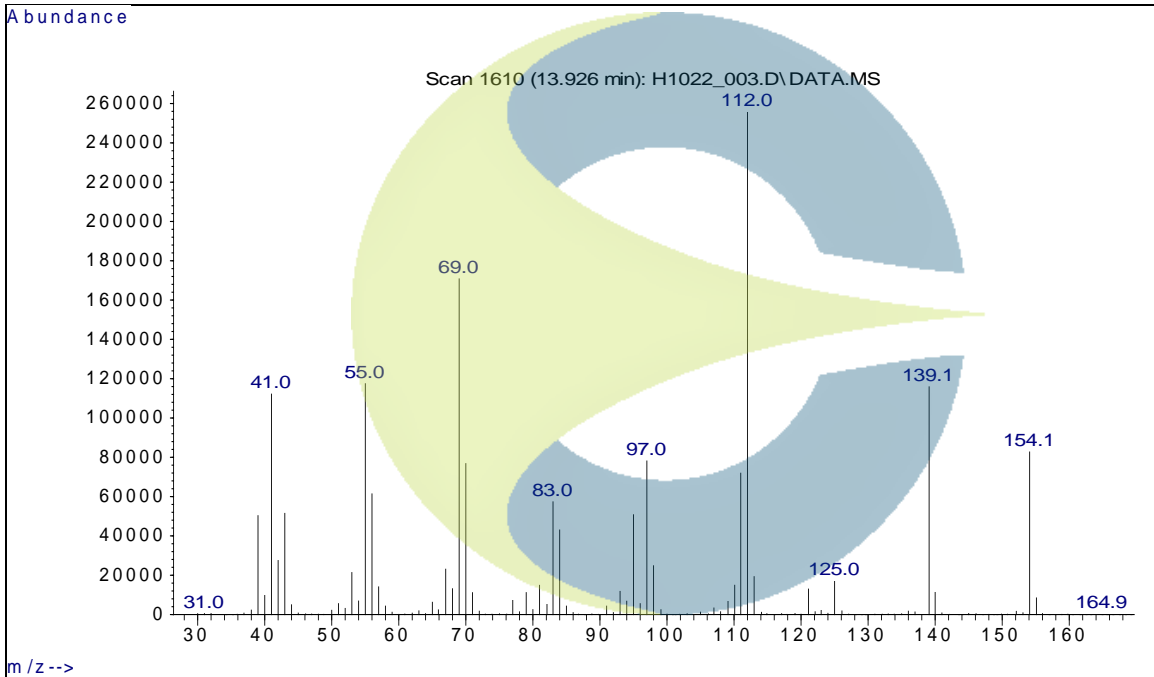
Certificate of Analysis

For Laboratory Use Only

**GC CHROMATOGRAM OF DILUENT BLANK**



**MASS SPECTRUM OF (-)-MENTHONE (CDXP-22-00706)**



This document is the property of ChromaDex, Inc. and/or its relevant affiliates and contains confidential and proprietary material for the sole use of the intended recipient(s). Any review, use, distribution or disclosure by or to others is strictly prohibited.

## Certificate of Analysis

For Laboratory Use Only

## REVISION HISTORY

<u>Revision History</u>	<u>Date of Revision</u>	<u>Document/Changes</u>
00	08/16/2022	New report

This document is the property of ChromaDex, Inc. and/or its relevant affiliates and contains confidential and proprietary material for the sole use of the intended recipient(s). Any review, use, distribution or disclosure by or to others is strictly prohibited.