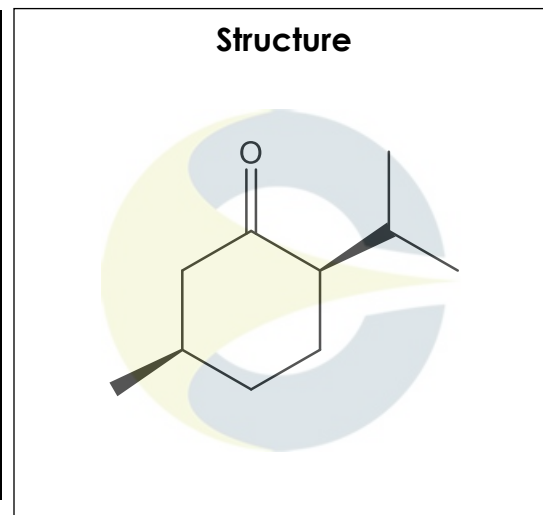


Certificate of Analysis
For Laboratory Use Only

PRODUCT NAME	(+)-Isomenthone
PART NUMBER	00009415
STANDARD TYPE	Analytical Standard (AS)
LOT NUMBER	00009415-013
REPORT NUMBER	CDXA-RSS-9025-01
SAMPLE NUMBER	CDXP-21-00594
DATE OF SAMPLE	07/01/2020
DATE OF RE-EVALUATION	08/25/2021
DATE OF REPORT	09/20/2021



CHEMICAL NAMES	(2R,5R)-5-Methyl-2-(1-methylethyl)-cyclohexanone; (1R,4R)-Isomenthone; (1R,4R)-(+)-p-Menthan-3-one
CHEMICAL FORMULA	C ₁₀ H ₁₈ O
MOLECULAR WEIGHT (MW)	154.25
CHEMICAL FAMILY	Terpenes
CAS NUMBER	[1196-31-2]
EC#(EINECS)	214-813-5
RTECS	N/A

ANALYTICAL RESULTS

TEST	METHOD	SPECIFICATION	RESULT
GC	0.700.10.2.METH140	≥ 75%	98.9%
Mass Spectrum	0.700.10.2.METH140	Conforms	Conforms
Appearance	NA	NA	Liquid

STORAGE CONDITIONS

STORAGE	+4 °C in a dry place.
EXPIRATION DATE	08/2026 under the above conditions.

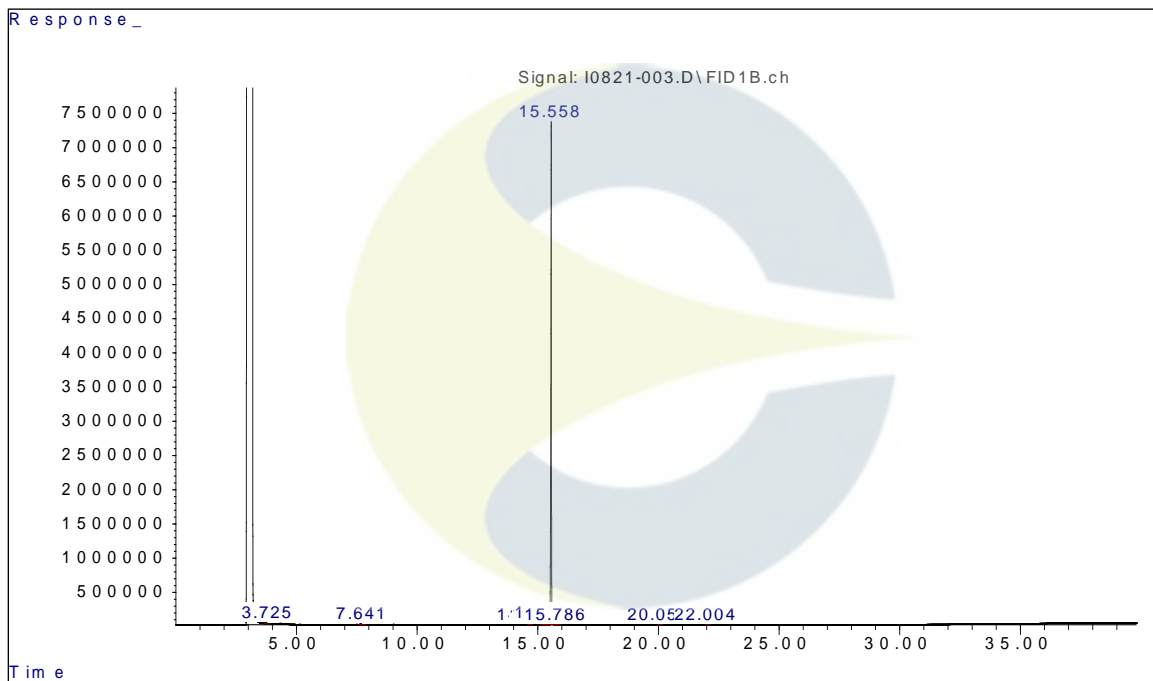
This document is the property of ChromaDex, Inc. and/or its relevant affiliates and contains confidential and proprietary material for the sole use of the intended recipient(s). Any review, use, distribution or disclosure by or to others is strictly prohibited.

Certificate of Analysis

For Laboratory Use Only

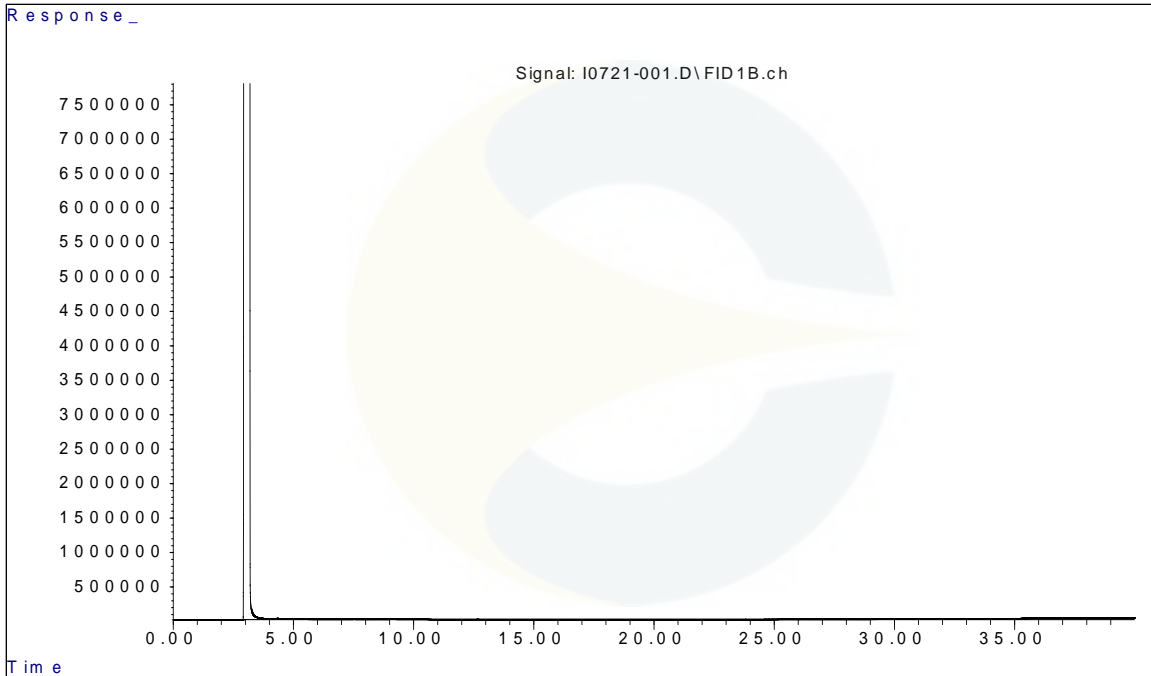
ANALYTICAL CONDITIONS

INSTRUMENT	AGILENT 7890B WITH FLAME IONIZATION DETECTOR (FID) AND AGILENT 5977B MASS SELECTIVE DETECTOR (MSD)
COLUMN	Phenomenex Zebron ZB-5plus, 30 m x 0.32 mm x 0.25 µm
CARRIER GAS	Helium
COLUMN TEMP.	Isothermic 40 °C for 5.0 minutes, then increasing at 10.0 °C/minute to 340 °C. Hold at 340 °C for 5.0 minutes.
FLOW RATE	2.0 mL/minute
INJECTOR TEMP.	300 °C
INJECTOR SPLIT RATIO	20:1
INJECTION VOL.	1.0 µL
INJECTION CONC.	2.6 mg/mL in Methanol
DETECTION	FID (300 °C) & MSD (Transfer line 280 °C, Source 230 °C, Quad 150 °C)

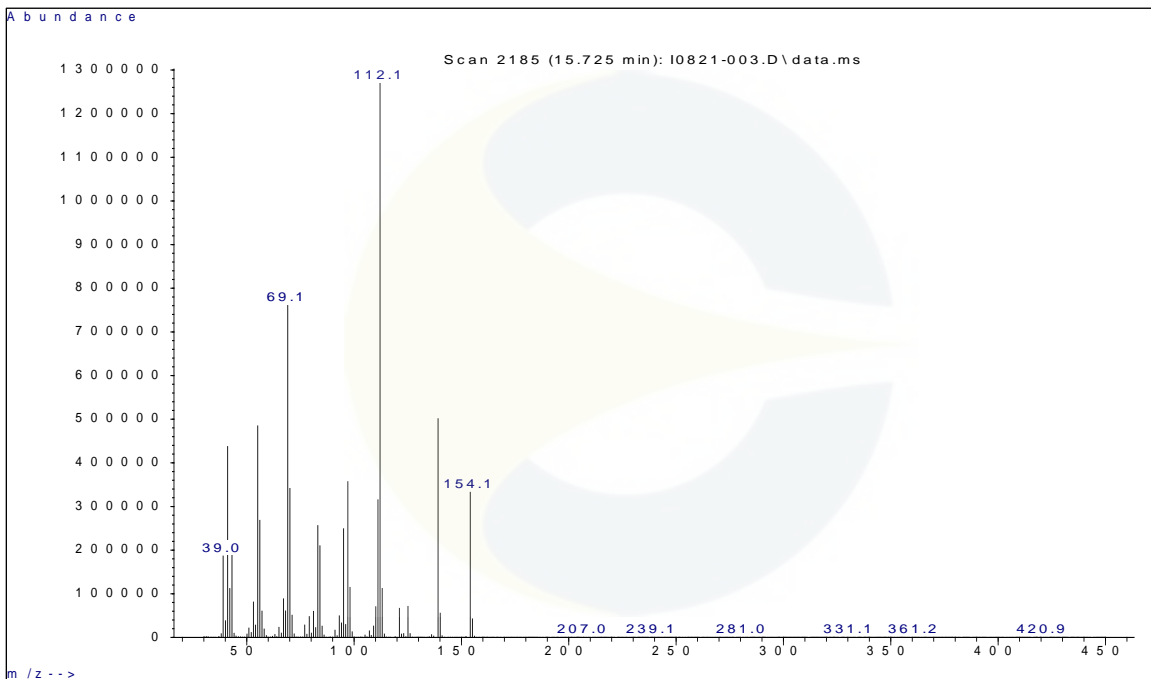
GC CHROMATOGRAM OF (+)-ISOMENTHONE (CDXP-21-00594)


This document is the property of ChromaDex, Inc. and/or its relevant affiliates and contains confidential and proprietary material for the sole use of the intended recipient(s). Any review, use, distribution or disclosure by or to others is strictly prohibited.

GC CHROMATOGRAM OF DILUENT BLANK



MASS SPECTRUM OF (+)-ISOMENTHONE (CDXP-21-00594)



This document is the property of ChromaDex, Inc. and/or its relevant affiliates and contains confidential and proprietary material for the sole use of the intended recipient(s). Any review, use, distribution or disclosure by or to others is strictly prohibited.

REVISION HISTORY

<u>Revision History</u>	<u>Date of Revision</u>	<u>Document/Changes</u>
00	07/06/2020	New report
01	09/20/2021	Passed first re-evaluation. Updated results, method, chromatograms, spectra, and expiration date.

This document is the property of ChromaDex, Inc. and/or its relevant affiliates and contains confidential and proprietary material for the sole use of the intended recipient(s). Any review, use, distribution or disclosure by or to others is strictly prohibited.