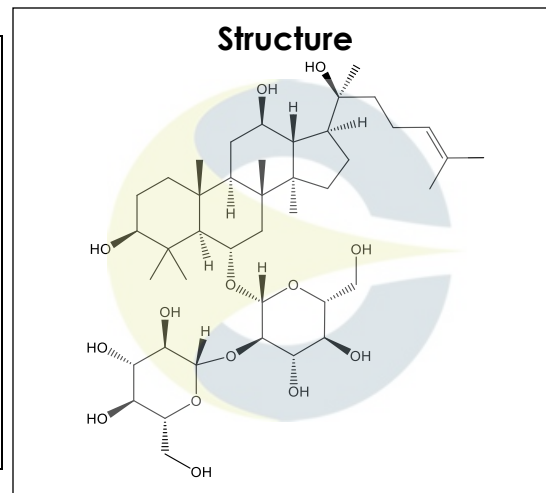


Certificate of Analysis

For Laboratory Use Only

PRODUCT NAME	Ginsenoside Rf
PART NUMBER	00007216
STANDARD TYPE	Analytical Standard (AS)
LOT NUMBER	00007216-738
REPORT NUMBER	CDXA-RSS-9180-00
SAMPLE NUMBER	CDXP-20-00738
DATE OF SAMPLE	10/12/2020
DATE OF REPORT	10/27/2020



CHEMICAL NAMES	(3 β ,6 α ,12 β)-3,12,20-Trihydroxydammar-24-en-6-yl-2-O- β -D-glucopyranosyl- β -D-glucopyranoside; Panaxoside Rf
CHEMICAL FORMULA	C ₄₂ H ₇₂ O ₁₄
MOLECULAR WEIGHT (MW)	801.01
CHEMICAL FAMILY	Saponins
CAS NUMBER	[52286-58-5]
EC#(EINECS)	634-870-3
RTECS	LY9536900

ANALYTICAL RESULTS

TEST	METHOD	SPECIFICATION	RESULT
HPLC	0.700.10.2.METH102	≥ 75%	85.5%
Mass Spectrum	99.1-CDXA-2.0-000126	Conforms	Conforms
Appearance	NA	NA	White powder

STORAGE CONDITIONS

STORAGE	Room Temperature in a dry place.
EXPIRATION DATE	10/2025 under the above conditions.

This document is the property of ChromaDex, Inc. and/or its relevant affiliates and contains confidential and proprietary material for the sole use of the intended recipient(s). Any review, use, distribution or disclosure by or to others is strictly prohibited.

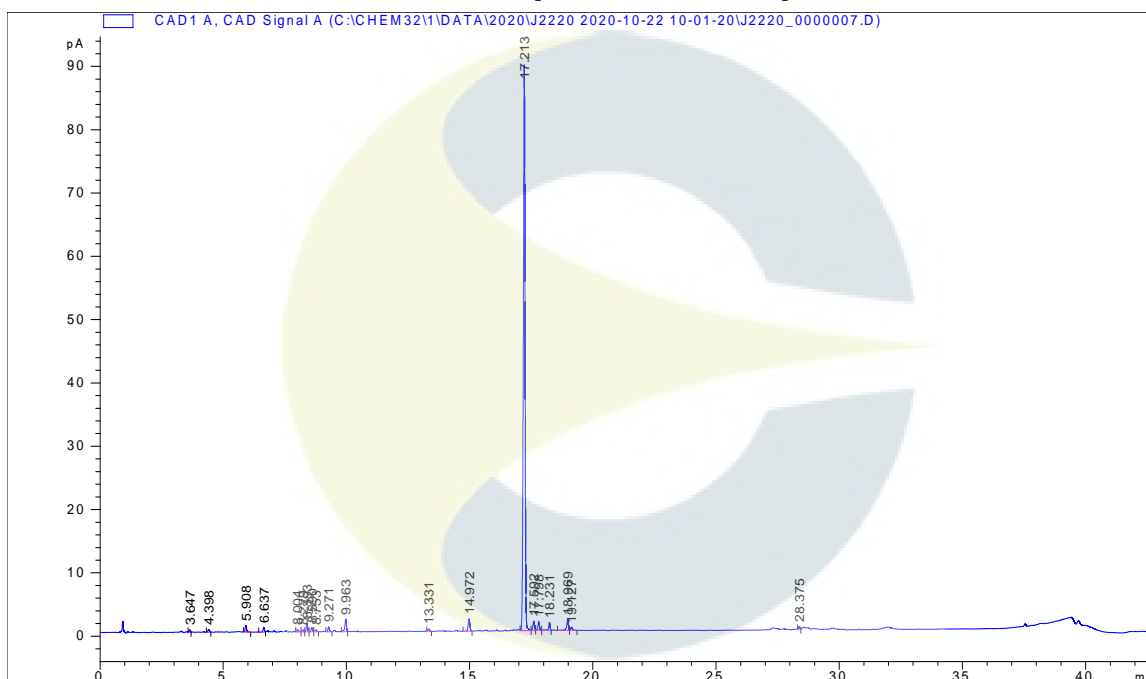
Certificate of Analysis

For Laboratory Use Only

ANALYTICAL CONDITIONS

INSTRUMENT	AGILENT 1260 HPLC UV-VIS (DAD) CONNECTED TO DIONEX CORONA VEO CHARGED AEROSOL DETECTOR (CAD); AGILENT 1100 ION TRAP
COLUMN	Phenomenex Kinetex C18, 150 x 4.6 mm, 2.6 μm particle size
MOBILE PHASE	A - Ultrapure water, B - Acetonitrile; Start at 15% B then increasing to 30% B over 15 minutes, then increasing to 32% B over one minute, then increasing to 38% B over 3 minutes, then increasing to 43% B over 5 minutes, then increasing to 55% B over 3 minutes, then increasing to 65% B over 4 minutes, then increasing to 70% B over 4 minutes and then increasing to 90% B over 3 minutes. Decrease to 15% B over one minute and then hold for 4 minutes.
COLUMN TEMP.	40 °C
FLOW RATE	1.5 mL/minute
INJECTION VOL.	5.0 μL
INJECTION CONC.	1.1 mg/mL in Methanol
DETECTION	CAD

HPLC CHROMATOGRAM OF GINSENOSEIDE RF (CDXP-20-00738)

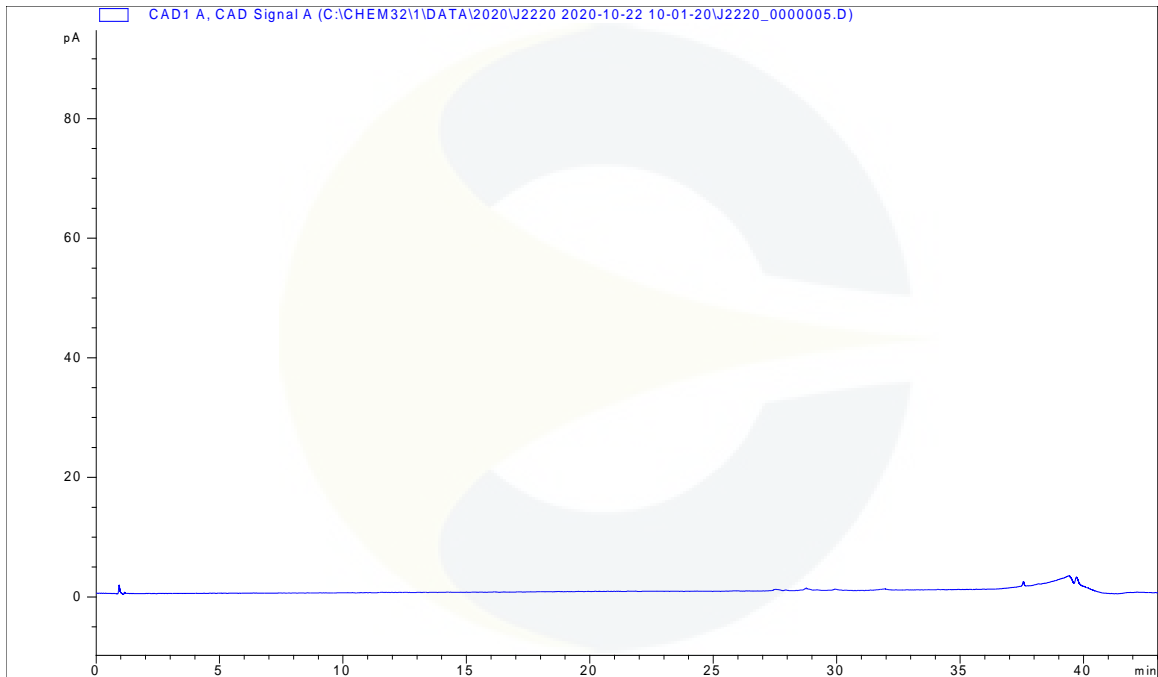


This document is the property of ChromaDex, Inc. and/or its relevant affiliates and contains confidential and proprietary material for the sole use of the intended recipient(s). Any review, use, distribution or disclosure by or to others is strictly prohibited.

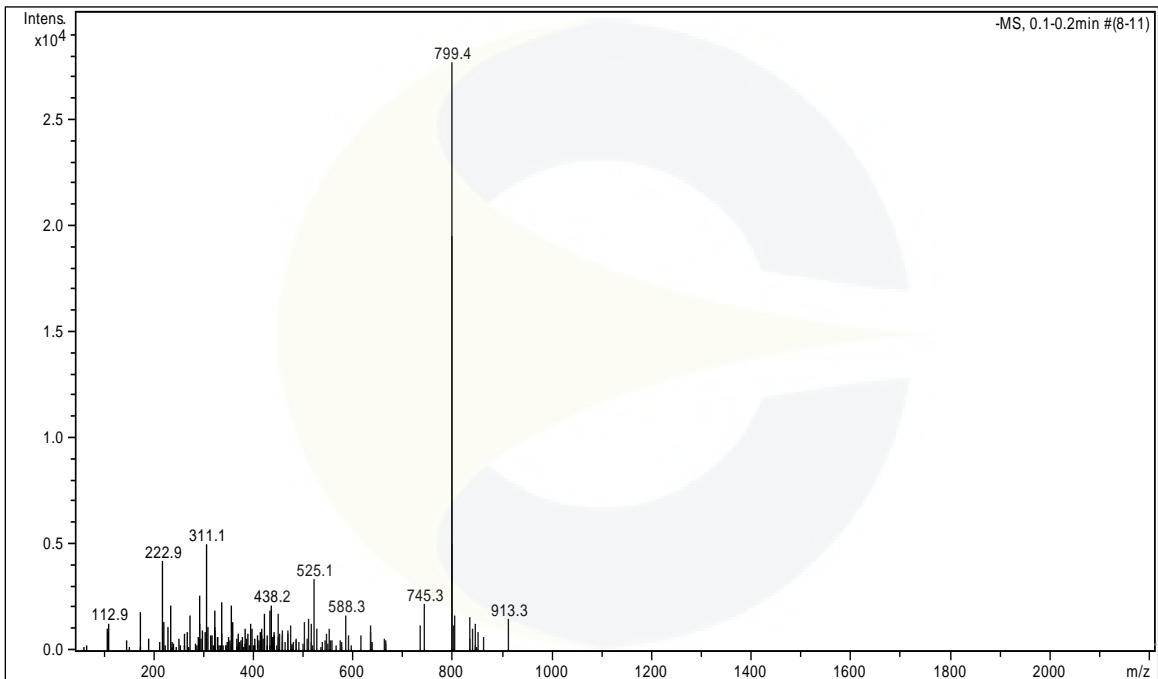
Certificate of Analysis

For Laboratory Use Only

HPLC CHROMATOGRAM OF DILUENT BLANK



MASS SPECTRUM OF GINSENOSE RF (CDXP-20-00738)



This document is the property of ChromaDex, Inc. and/or its relevant affiliates and contains confidential and proprietary material for the sole use of the intended recipient(s). Any review, use, distribution or disclosure by or to others is strictly prohibited.

Certificate of Analysis

For Laboratory Use Only

REVISION HISTORY

<u>Revision History</u>	<u>Date of Revision</u>	<u>Document/Changes</u>
00	10/27/2020	New report

This document is the property of ChromaDex, Inc. and/or its relevant affiliates and contains confidential and proprietary material for the sole use of the intended recipient(s). Any review, use, distribution or disclosure by or to others is strictly prohibited.