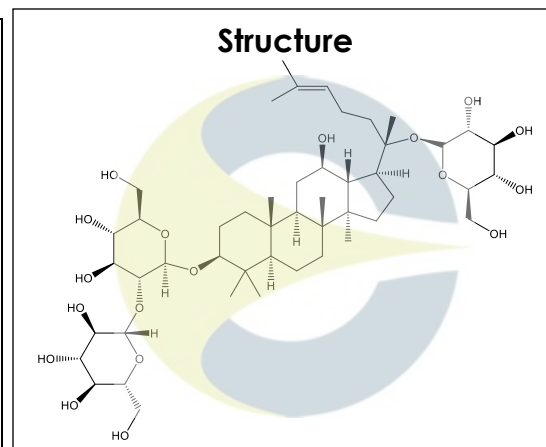


**Certificate of Analysis**

For Laboratory Use Only

<b>PRODUCT NAME</b>	Ginsenoside Rd
<b>PART NUMBER</b>	00007206
<b>STANDARD TYPE</b>	Analytical Standard (AS)
<b>LOT NUMBER</b>	00007206-014
<b>REPORT NUMBER</b>	CDXA-RSS-9725-00
<b>SAMPLE NUMBER</b>	CDXP-22-00211
<b>DATE OF SAMPLE</b>	03/11/2022
<b>DATE OF REPORT</b>	04/14/2022



<b>CHEMICAL NAMES</b>	(3 $\beta$ ,12 $\beta$ )-20-( $\beta$ -D-Glucopyranosyloxy)-12-hydroxydammar-24-en-3-yl 2-O- $\beta$ -D-glucopyranosyl- $\beta$ -D-glucopyranoside; Gypenoside VIII; Chikusetsusaponin FK <sub>7</sub>
<b>CHEMICAL FORMULA</b>	C <sub>48</sub> H <sub>82</sub> O <sub>18</sub>
<b>MOLECULAR WEIGHT (MW)</b>	947.15
<b>CHEMICAL FAMILY</b>	Saponins
<b>CAS NUMBER</b>	[52705-93-8]
<b>EC#(EINECS)</b>	258-118-5
<b>RTECS</b>	LZ5858000

**ANALYTICAL RESULTS**

TEST	METHOD	SPECIFICATION	RESULT
HPLC	0.700.10.2.METH102	≥ 75%	99.2%
Mass Spectrum	0.700.12.27	Conforms	Conforms
Appearance	NA	NA	White powder

**STORAGE CONDITIONS**

<b>STORAGE</b>	Room Temperature in a dry place.
<b>EXPIRATION DATE</b>	03/2027 under the above conditions.

This document is the property of ChromaDex, Inc. and/or its relevant affiliates and contains confidential and proprietary material for the sole use of the intended recipient(s). Any review, use, distribution or disclosure by or to others is strictly prohibited.

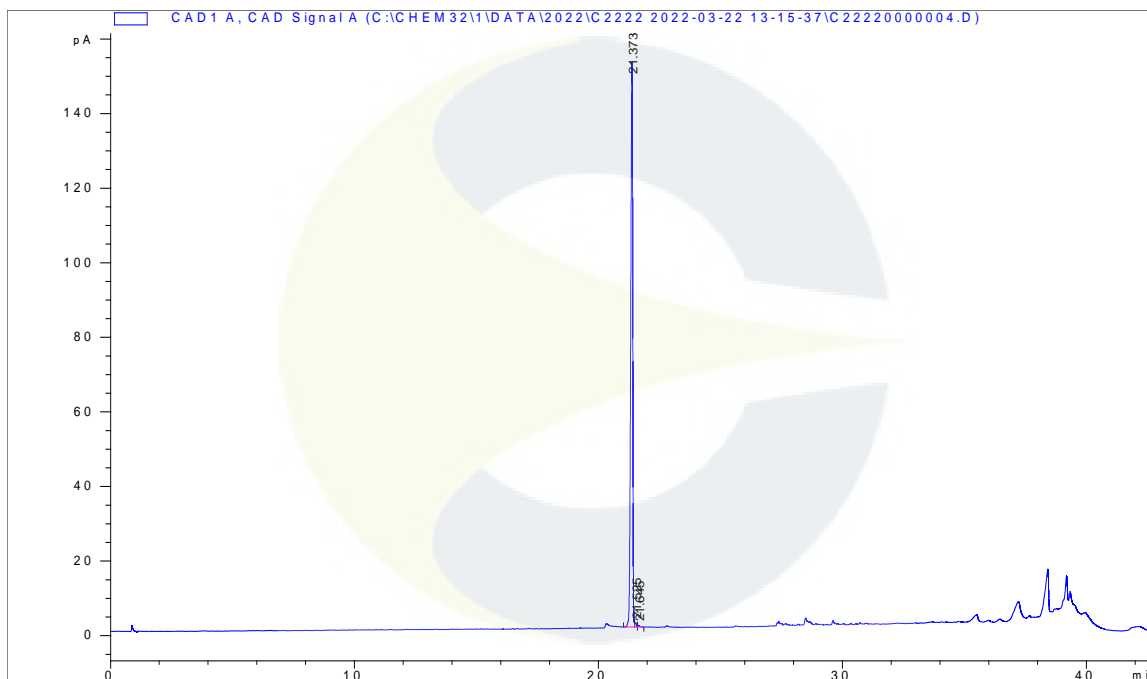
Certificate of Analysis

For Laboratory Use Only

**ANALYTICAL CONDITIONS**

<b>INSTRUMENT</b>	AGILENT 1260 HPLC UV-VIS (DAD) CONNECTED TO DIONEX CORONA VEO CHARGED AEROSOL DETECTOR (CAD); AB-SCIEX 6600 TRIPLE TOF
<b>COLUMN</b>	Phenomenex Kinetex C18 150 x 4.6 mm, 2.6 µm particle size
<b>MOBILE PHASE</b>	A - Ultrapure water, B - Acetonitrile; Start at 15% B, then increase to 30% B over 15 minutes, then increase to 32% B over 1 minute, then increase to 38% B over 3 minutes, then increase to 43% B over 5 minutes, then increase to 55% B over 3 minutes, then increase to 65% B over 4 minutes, then increase to 70% B over 4 minutes, then increase to 90% B over 3 minutes, then decrease to 15% B over 1 minute and hold at 15% B for 4 minutes.
<b>COLUMN TEMP.</b>	40 °C
<b>FLOW RATE</b>	1.5 mL/minute
<b>INJECTION VOL.</b>	5.0 µL
<b>INJECTION CONC.</b>	1.2 mg/mL in Methanol
<b>DETECTION</b>	CAD

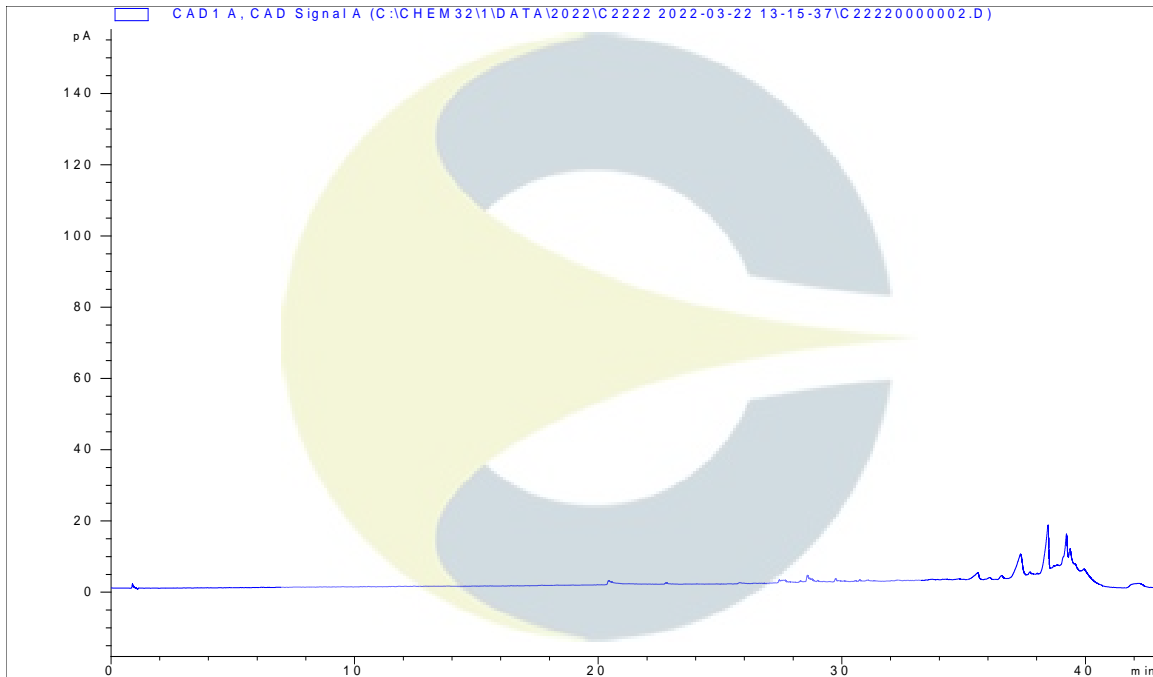
**HPLC CHROMATOGRAM OF GINSENOSE RD (CDXP-22-00211)**



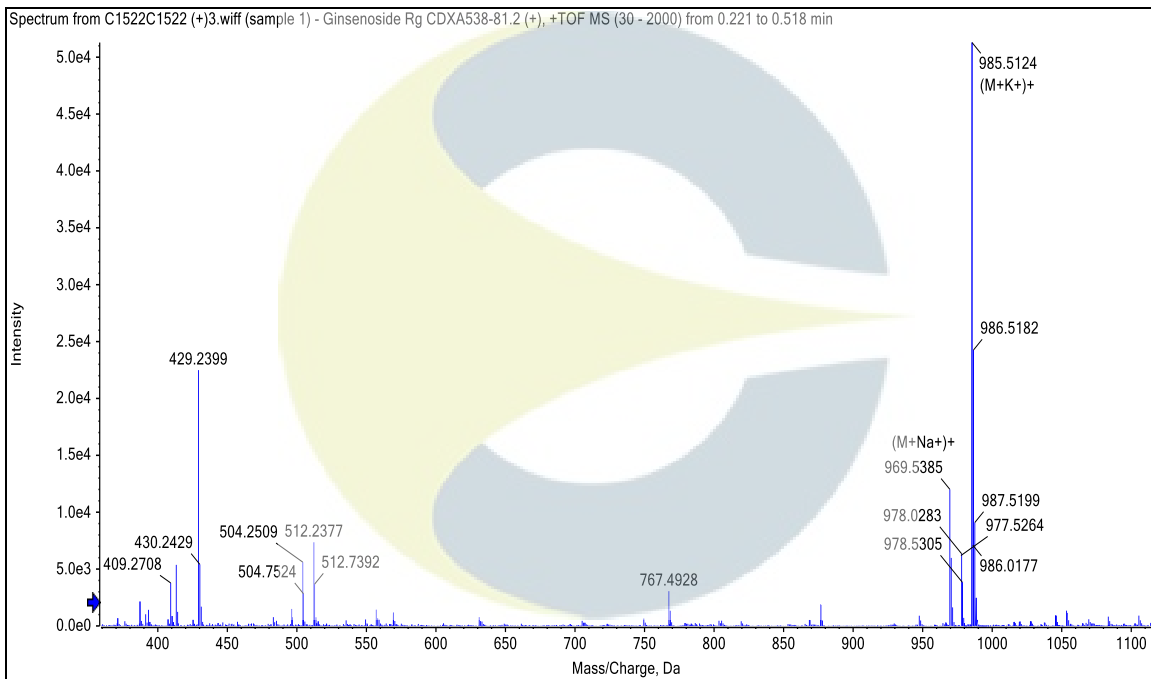
This document is the property of ChromaDex, Inc. and/or its relevant affiliates and contains confidential and proprietary material for the sole use of the intended recipient(s). Any review, use, distribution or disclosure by or to others is strictly prohibited.

Certificate of Analysis For Laboratory Use Only

**HPLC CHROMATOGRAM OF DILUENT BLANK**



**MASS SPECTRUM OF GINSENOSE RD (CDXP-22-00211)**



This document is the property of ChromaDex, Inc. and/or its relevant affiliates and contains confidential and proprietary material for the sole use of the intended recipient(s). Any review, use, distribution or disclosure by or to others is strictly prohibited.

## Certificate of Analysis

For Laboratory Use Only

## REVISION HISTORY

<u>Revision History</u>	<u>Date of Revision</u>	<u>Document/Changes</u>
00	04/14/2022	New report

This document is the property of ChromaDex, Inc. and/or its relevant affiliates and contains confidential and proprietary material for the sole use of the intended recipient(s). Any review, use, distribution or disclosure by or to others is strictly prohibited.