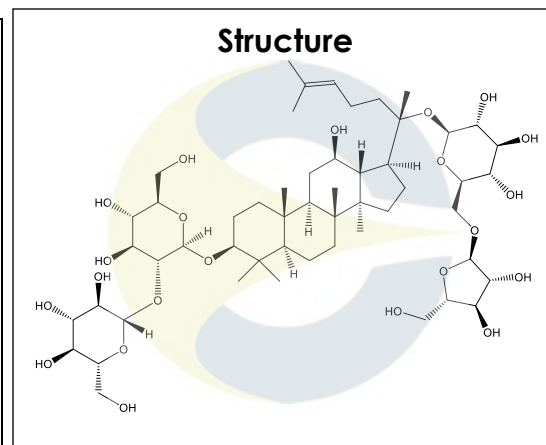


Certificate of Analysis

For Laboratory Use Only

| | |
|-----------------------|--------------------------|
| PRODUCT NAME | Ginsenoside Rc |
| PART NUMBER | 00007201 |
| STANDARD TYPE | Analytical Standard (AS) |
| LOT NUMBER | 00007201-604 |
| REPORT NUMBER | CDXA-RSS-9058-00 |
| SAMPLE NUMBER | CDXP-20-00432 |
| DATE OF SAMPLE | 06/17/2020 |
| DATE OF REPORT | 03/01/2021 |



| | |
|------------------------------|--|
| CHEMICAL NAMES | (3β,12β)-20-((6-O-α-L-arabinofuranosyl-β-D-glucopyranosyl)oxy)-12-hydroxydammar-24-en-3-yl 2-O-β-D-glucopyranosyl-β-D-glucopyranoside; Panaxoside Rc |
| CHEMICAL FORMULA | C ₅₃ H ₉₀ O ₂₂ |
| MOLECULAR WEIGHT (MW) | 1079.27 |
| CHEMICAL FAMILY | Saponins |
| CAS NUMBER | [11021-14-0] |
| EC#(EINECS) | 234-253-5 |
| RTECS | LY9536300 |

ANALYTICAL RESULTS

| TEST | METHOD | SPECIFICATION | RESULT |
|---------------|--------------------|---------------|--------------|
| HPLC | 0.700.10.2.METH102 | ≥ 75% | 96.7% |
| Mass Spectrum | 0.700.12.27 | Conforms | Conforms |
| Appearance | NA | NA | White powder |

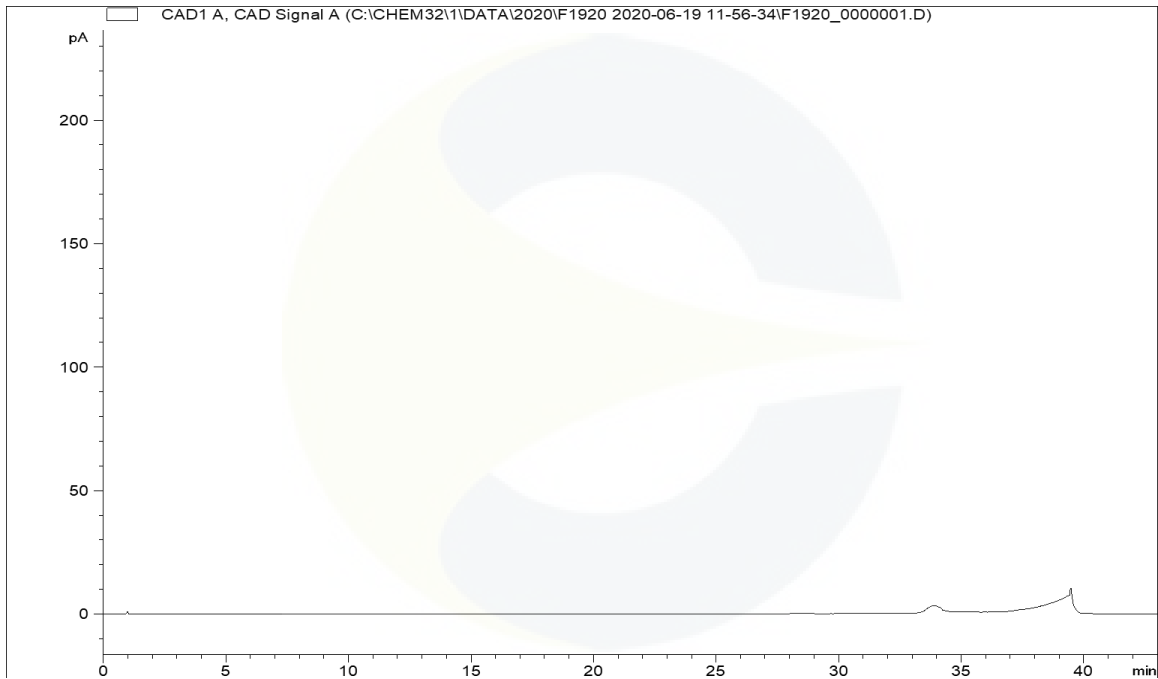
STORAGE CONDITIONS

| | |
|------------------------|-------------------------------------|
| STORAGE | +4 °C in a dry place. |
| EXPIRATION DATE | 06/2025 under the above conditions. |

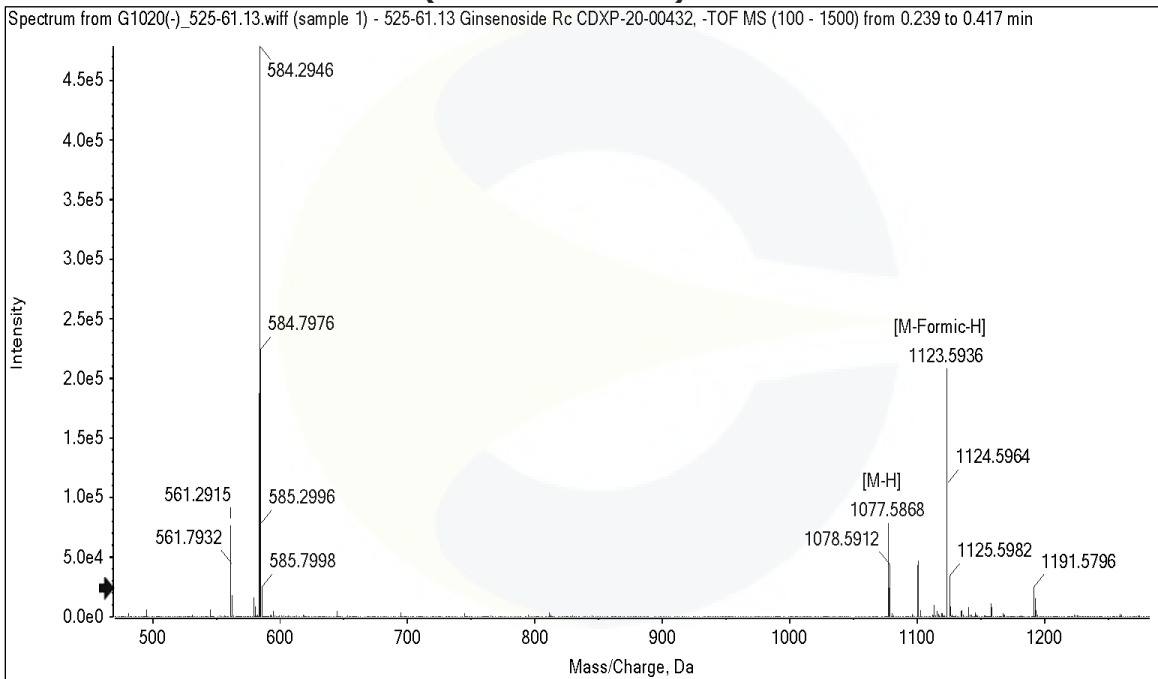
This document is the property of ChromaDex, Inc. and/or its relevant affiliates and contains confidential and proprietary material for the sole use of the intended recipient(s). Any review, use, distribution or disclosure by or to others is strictly prohibited.

Certificate of Analysis For Laboratory Use Only

HPLC CHROMATOGRAM OF DILUENT BLANK



MASS SPECTRUM OF GINSENOSE RC (CDXP-20-00432)



This document is the property of ChromaDex, Inc. and/or its relevant affiliates and contains confidential and proprietary material for the sole use of the intended recipient(s). Any review, use, distribution or disclosure by or to others is strictly prohibited.

Certificate of Analysis

For Laboratory Use Only

REVISION HISTORY

| <u>Revision History</u> | <u>Date of Revision</u> | <u>Document/Changes</u> |
|-------------------------|-------------------------|-------------------------|
| 00 | 03/01/2021 | New report |

This document is the property of ChromaDex, Inc. and/or its relevant affiliates and contains confidential and proprietary material for the sole use of the intended recipient(s). Any review, use, distribution or disclosure by or to others is strictly prohibited.