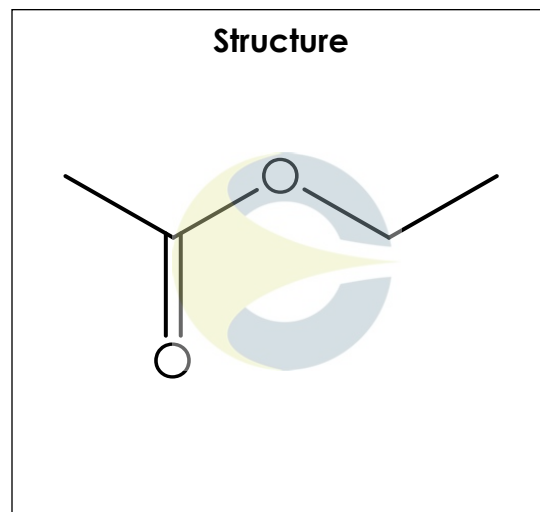


Certificate of Analysis
For Laboratory Use Only

PRODUCT NAME	Ethylacetate
PART NUMBER	00005336
STANDARD TYPE	Analytical Standard (AS)
LOT NUMBER	00005336-016
REPORT NUMBER	CDXA-RSS-2489-02
SAMPLE NUMBER	CDXA-08-0708
DATE OF SAMPLE	04/10/2008
DATE OF RE-EVALUATION	12/26/2014 (1 st); 07/25/2019 (2 nd)
DATE OF REPORT	08/21/2019



CHEMICAL NAMES	Acetic ether; Acetoxyethane; Acetic acid ethyl ester; Ethyl ethanoate
CHEMICAL FORMULA	C ₄ H ₈ O ₂
MOLECULAR WEIGHT (MW)	88.11
CHEMICAL FAMILY	Aliphatic esters
CAS NUMBER	[141-78-6]
EC#(EINECS)	205-500-4
RTECS	AH5425000

ANALYTICAL RESULTS

TEST	METHOD	SPECIFICATION	RESULT
GC	See Below	NA	99.5%
Mass Spectrum	See Below	Conforms	Conforms
Appearance	NA	NA	Liquid

STORAGE CONDITIONS

STORAGE	+4 °C in a dry place.
EXPIRATION DATE	07/2024 under the above conditions.

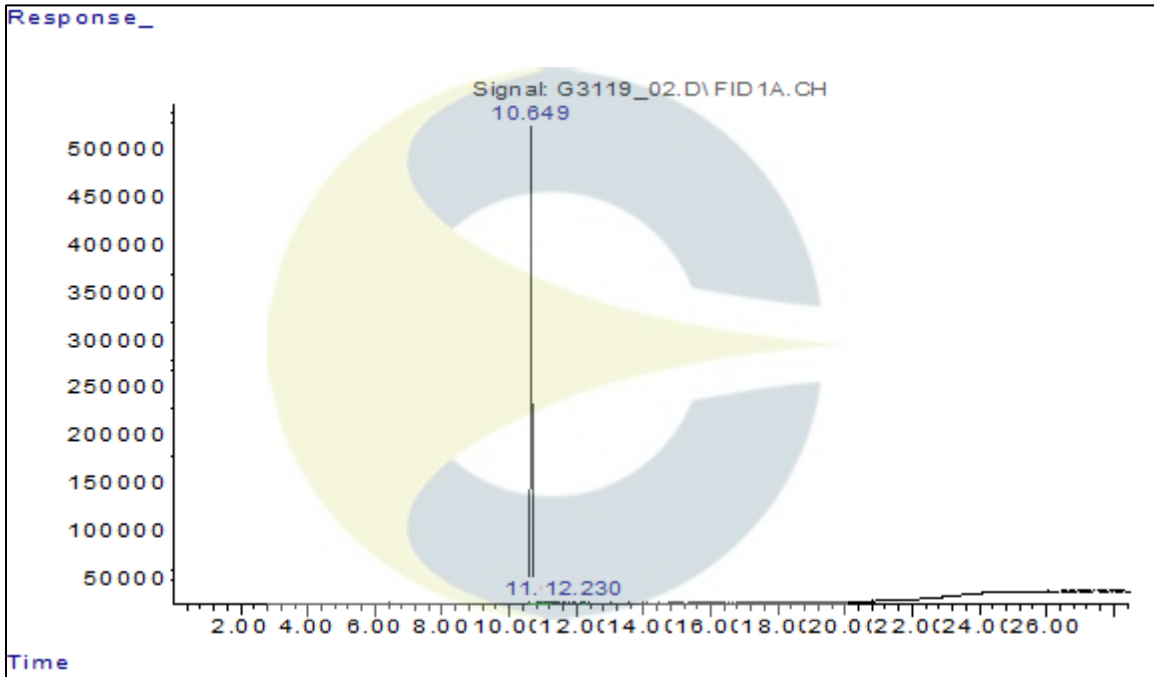
This document is the property of ChromaDex, Inc. and/or its relevant affiliates and contains confidential and proprietary material for the sole use of the intended recipient(s). Any review, use, distribution or disclosure by or to others is strictly prohibited.

Certificate of Analysis For Laboratory Use Only

ANALYTICAL CONDITIONS

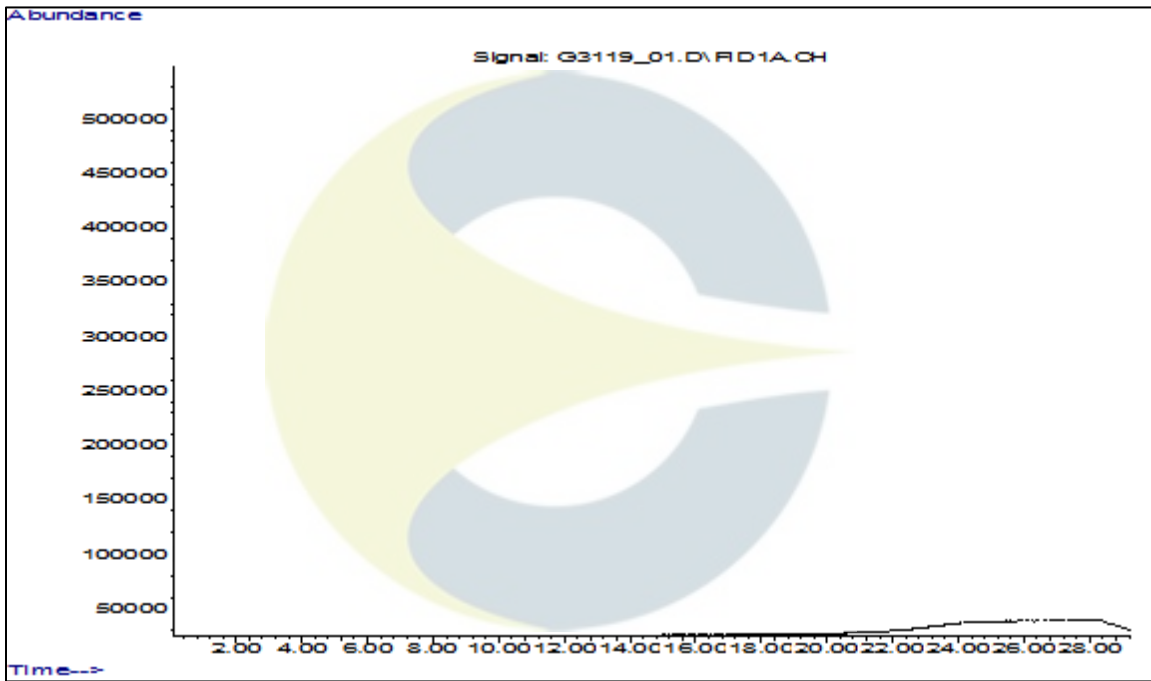
INSTRUMENT	AGILENT 6890N WITH FLAME IONIZATION DETECTOR (FID) AND AGILENT 5973N MASS SELECTIVE DETECTOR (MSD)
COLUMN	Agilent J&W DB-624 Ultra Inert, 30 m x 0.25 mm x 1.4 µm; connected to an MXT Y-union, connected to an Agilent deactivated retention gap 10 m x 0.25 mm to FID; and an Agilent deactivated transfer line: 5 m x 100 µm transfer line to MSD.
CARRIER GAS	Helium
COLUMN TEMP.	Isothermic 40 °C for 8.0 minutes, then increasing at 13.0 °C/minute to 240 °C. Hold at 240 °C for 5.0 minutes.
FLOW RATE	1.5 mL/minute
INJECTOR TEMP.	200 °C
INJECTOR SPLIT RATIO	20:1
INJECTION VOL.	0.2 µL
INJECTION CONC.	5.2 mg/mL in Ultrapure water
DETECTION	FID (250 °C) & MSD (Transfer line: 240 °C; Source: 250 °C, Quad: 200 °C)

GC CHROMATOGRAM OF ETHYLACETATE (CDXA-08-0708)

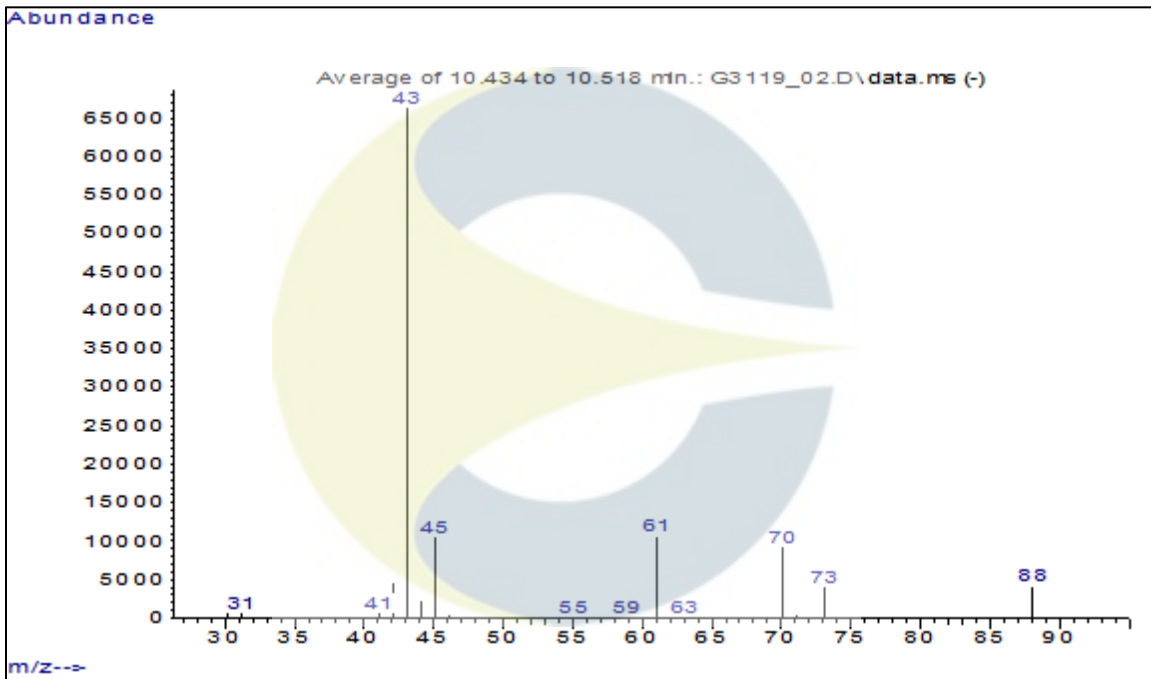


This document is the property of ChromaDex, Inc. and/or its relevant affiliates and contains confidential and proprietary material for the sole use of the intended recipient(s). Any review, use, distribution or disclosure by or to others is strictly prohibited.

GC CHROMATOGRAM OF DILUENT BLANK



MASS SPECTRUM OF ETHYLACETATE (CDXA-08-0708)



This document is the property of ChromaDex, Inc. and/or its relevant affiliates and contains confidential and proprietary material for the sole use of the intended recipient(s). Any review, use, distribution or disclosure by or to others is strictly prohibited.

Certificate of Analysis

For Laboratory Use Only

REVISION HISTORY

<u>Revision History</u>	<u>Date of Revision</u>	<u>Document/Changes</u>
00	04/10/2008	New report
01	01/02/2015	Passed re-evaluation by GC-FID. Updated expiration date, appearance, chemical names and chemical family.
02	08/21/2019	Passed re-evaluation by GCMS/FID. Updated expiration date, chemical names, structure, Analytical Conditions, chromatograms, spectra and Analytical Results. Removed melting point.

This document is the property of ChromaDex, Inc. and/or its relevant affiliates and contains confidential and proprietary material for the sole use of the intended recipient(s). Any review, use, distribution or disclosure by or to others is strictly prohibited.