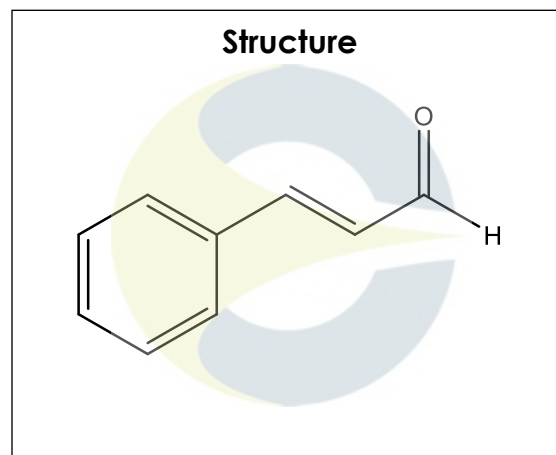


Certificate of Analysis
For Laboratory Use Only

PRODUCT NAME	trans-Cinnamaldehyde
PART NUMBER	00003654
STANDARD TYPE	Analytical Standard (AS)
LOT NUMBER	00003654-23W
REPORT NUMBER	CDXA-RSS-9171-00
SAMPLE NUMBER	CDXP-20-00700
DATE OF SAMPLE	09/23/2020
DATE OF REPORT	10/21/2020



CHEMICAL NAMES	(2E)-3-phenyl-2-propenal; (E)-3-Phenylprop-2-en-1-al; (E)-3-Phenylpropenal; (E)-Cinnamaldehyde; trans-Cinnamic aldehyde; trans-Cinnamylaldehyde
CHEMICAL FORMULA	C ₉ H ₈ O
MOLECULAR WEIGHT (MW)	132.16
CHEMICAL FAMILY	Essential oils
CAS NUMBER	[14371-10-9]
EC#(EINECS)	604-377-8
RTECS	GD6476000

ANALYTICAL RESULTS

TEST	METHOD	SPECIFICATION	RESULT
GC	0.700.10.2.METH140	≥ 75%	81.2%
Mass Spectrum	0.700.10.2.METH140	Conforms	Conforms
Appearance	NA	NA	Oil

STORAGE CONDITIONS

STORAGE	+4 °C in a dry place.
EXPIRATION DATE	09/2025 under the above conditions.

This document is the property of ChromaDex, Inc. and/or its relevant affiliates and contains confidential and proprietary material for the sole use of the intended recipient(s). Any review, use, distribution or disclosure by or to others is strictly prohibited.

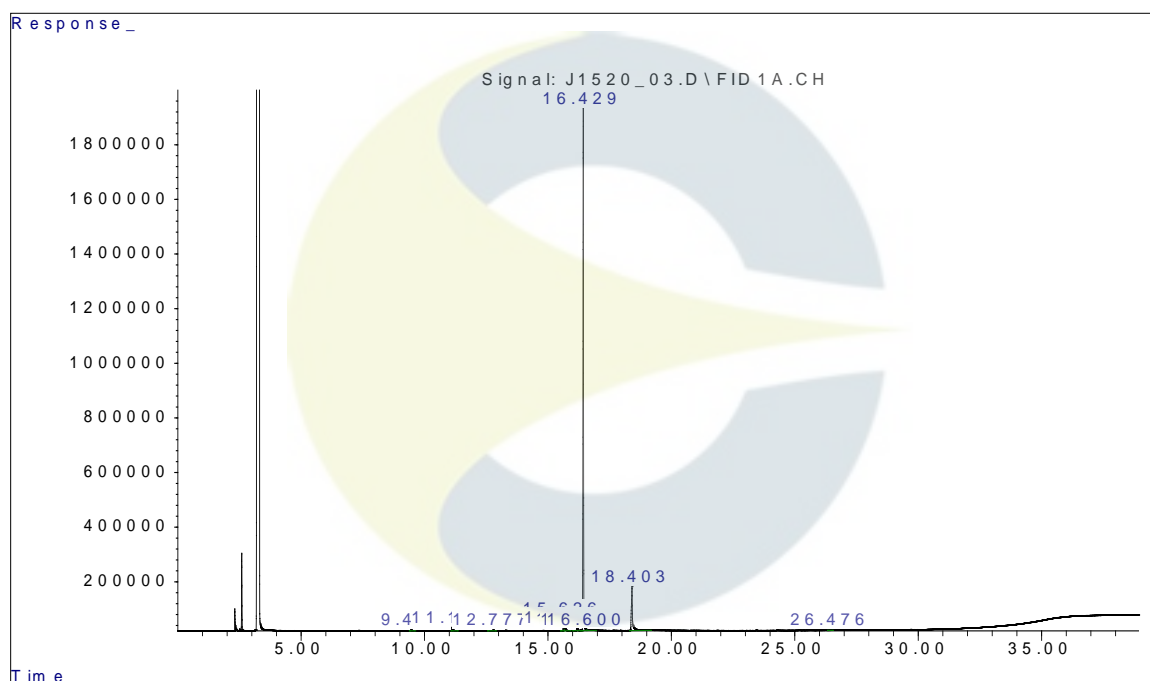
Certificate of Analysis

For Laboratory Use Only

ANALYTICAL CONDITIONS

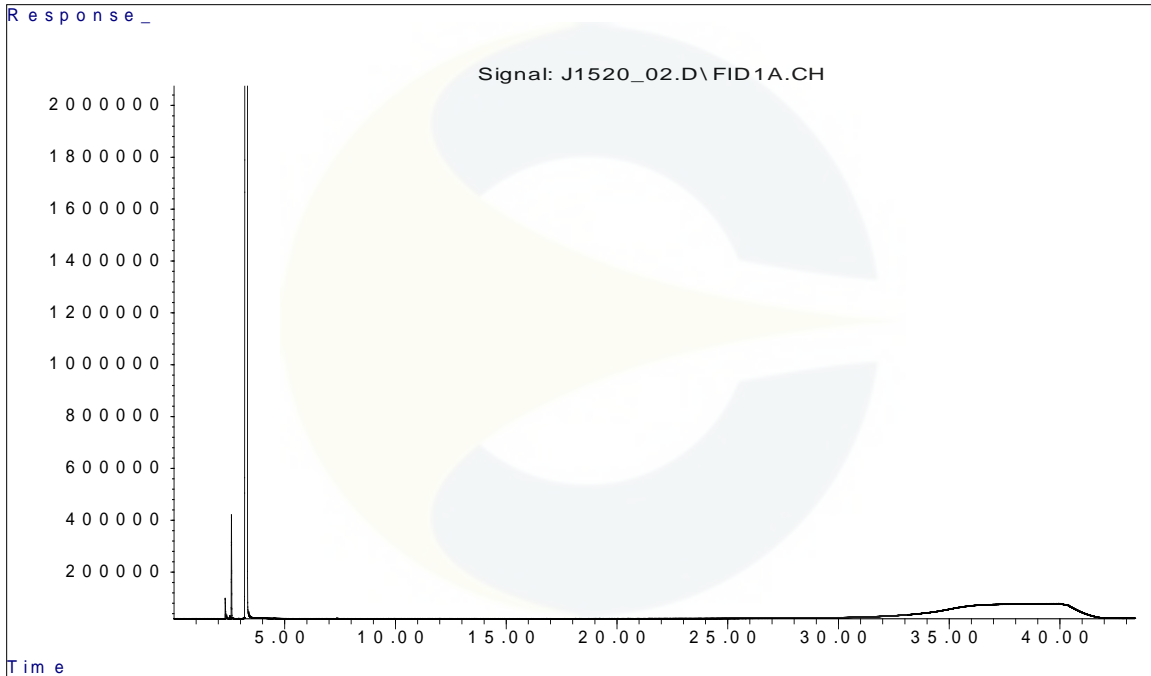
INSTRUMENT	AGILENT 6890N WITH FLAME IONIZATION DETECTOR (FID) AND AGILENT 5973N MASS SELECTIVE DETECTOR (MSD)
COLUMN	Phenomenex Zebron ZB-5 plus, 30 m x 0.32 mm x 0.25 μ m; connected to an MXT Y-union, connected to a Restek Siltek deactivated guard column: 10 m x 0.25 mm to FID; and a 5 m x 100 μ m transfer line to MSD.
CARRIER GAS	Helium
COLUMN TEMP.	Isothermic 40 $^{\circ}$ C for 5.0 minutes, then increasing at 10.0 $^{\circ}$ C/minute to 340 $^{\circ}$ C. Hold at 340 $^{\circ}$ C for 5.0 minutes.
FLOW RATE	2.0 mL/minute
INJECTOR TEMP.	300 $^{\circ}$ C
INJECTOR SPLIT RATIO	20:1
INJECTION VOL.	1.0 μ L
INJECTION CONC.	1.9 mg/mL in Chloroform
DETECTION	FID (350 $^{\circ}$ C) & MSD (Transfer line 300 $^{\circ}$ C, Source 250 $^{\circ}$ C, Quad 200 $^{\circ}$ C)

GC CHROMATOGRAM OF TRANS-CINNAMALDEHYDE (CDXP-20-00700)

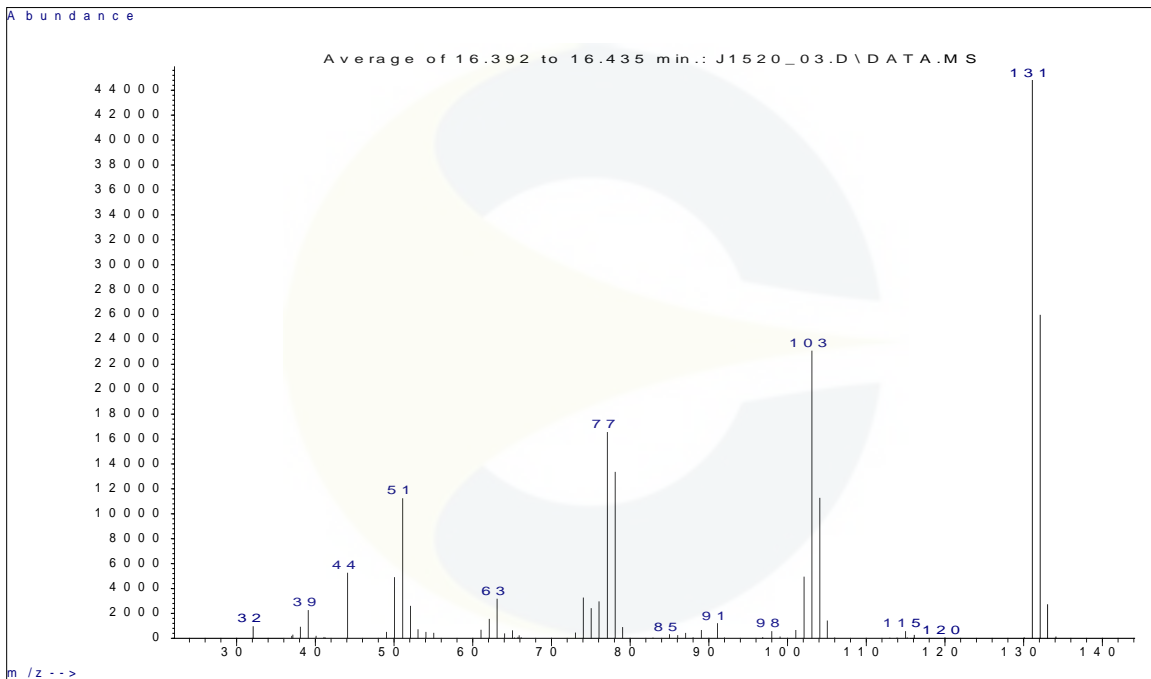


This document is the property of ChromaDex, Inc. and/or its relevant affiliates and contains confidential and proprietary material for the sole use of the intended recipient(s). Any review, use, distribution or disclosure by or to others is strictly prohibited.

GC CHROMATOGRAM OF DILUENT BLANK



MASS SPECTRUM OF TRANS-CINNAMALDEHYDE (CDXP-20-00700)



This document is the property of ChromaDex, Inc. and/or its relevant affiliates and contains confidential and proprietary material for the sole use of the intended recipient(s). Any review, use, distribution or disclosure by or to others is strictly prohibited.

Certificate of Analysis

For Laboratory Use Only

REVISION HISTORY

<u>Revision History</u>	<u>Date of Revision</u>	<u>Document/Changes</u>
00	10/21/2020	New report

This document is the property of ChromaDex, Inc. and/or its relevant affiliates and contains confidential and proprietary material for the sole use of the intended recipient(s). Any review, use, distribution or disclosure by or to others is strictly prohibited.