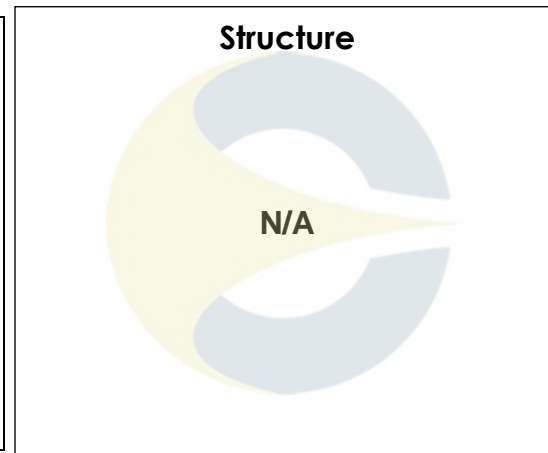


**Certificate of Analysis**

For Laboratory Use Only

<b>PRODUCT NAME</b>	Bacoside A (Mixture of Saponins)
<b>PART NUMBER</b>	00002005
<b>STANDARD TYPE</b>	Analytical Standard (AS)
<b>LOT NUMBER</b>	00002005-451
<b>REPORT NUMBER</b>	CDXA-RSS-9420-00
<b>SAMPLE NUMBER</b>	CDXP-21-00321
<b>DATE OF SAMPLE</b>	05/04/2021
<b>DATE OF REPORT</b>	07/29/2021



<b>CHEMICAL NAMES</b>	Mixture of Bacoside A saponins including: Bacoside A3, Bacopaside II, Bacopaside X and Bacopasaponin C
<b>CHEMICAL FORMULA</b>	N/A
<b>MOLECULAR WEIGHT (MW)</b>	N/A
<b>CHEMICAL FAMILY</b>	Triterpenes
<b>CAS NUMBER</b>	[11028-00-5]
<b>EC#(EINECS)</b>	N/A
<b>RTECS</b>	N/A

**ANALYTICAL RESULTS**

TEST	METHOD	SPECIFICATION	RESULT
HPLC	See below	≥ 75%	Peak @ 17.2 min - 12.0% Peak @ 17.6 min - 33.8% Peak @ 18.2 min - 22.7% Peak @ 19.1 min - 29.1% Total = 97.7%
Mass Spectrum	See below	Conforms	Conforms
Appearance	NA	NA	White powder

**STORAGE CONDITIONS**

<b>STORAGE</b>	+4 °C in a dry place.
<b>EXPIRATION DATE</b>	05/2026 under the above conditions.

This document is the property of ChromaDex, Inc. and/or its relevant affiliates and contains confidential and proprietary material for the sole use of the intended recipient(s). Any review, use, distribution or disclosure by or to others is strictly prohibited.

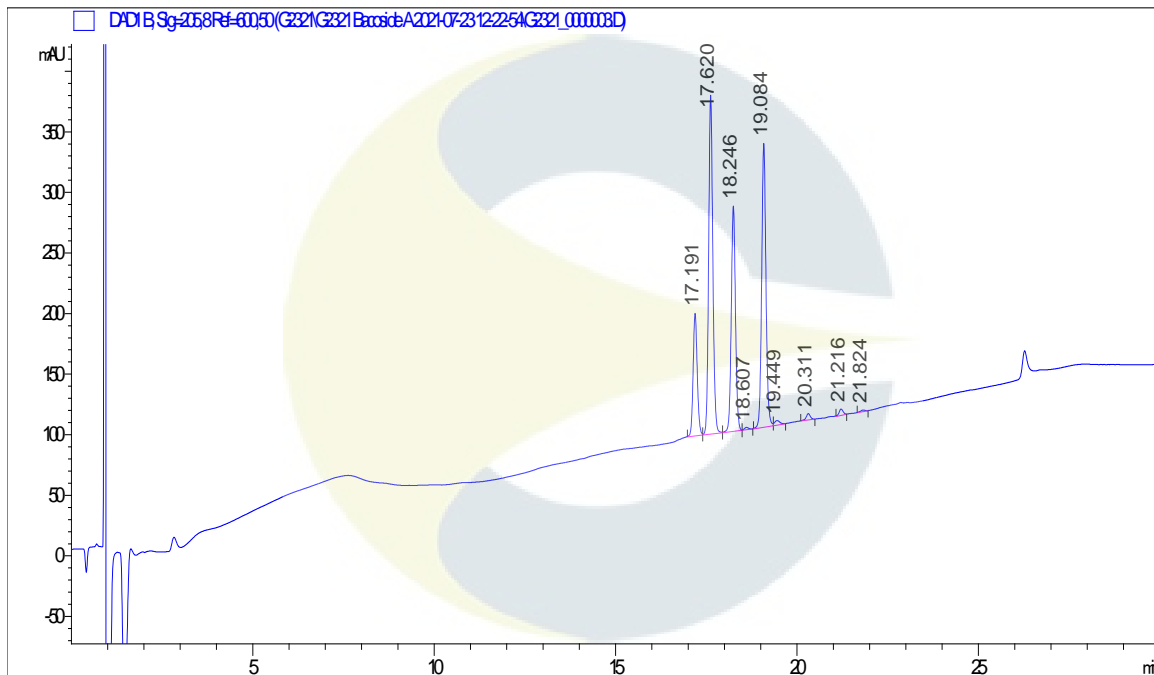
## Certificate of Analysis

*For Laboratory Use Only*

### ANALYTICAL CONDITIONS

<b>INSTRUMENT</b>	AGILENT 1260 HPLC UV-VIS (DAD); AB-SCIEX 6600 TRIPLE TOF
<b>COLUMN</b>	Phenomenex Luna C18(2) 150 x 2.00 mm, 3 µm particle size
<b>MOBILE PHASE</b>	A - 0.1% Formic acid in Ultrapure water, B – 0.1% Formic acid in Methanol; 15% B increasing to 50% B over 5 minutes then increasing to 80% B over 20 minutes. Hold at 80% B for 5 minutes.
<b>COLUMN TEMP.</b>	60 °C
<b>FLOW RATE</b>	0.4 mL/minute
<b>INJECTION VOL.</b>	8.0 µL
<b>INJECTION CONC.</b>	1.3 mg/mL in Methanol
<b>DETECTION</b>	205 ± 4 nm

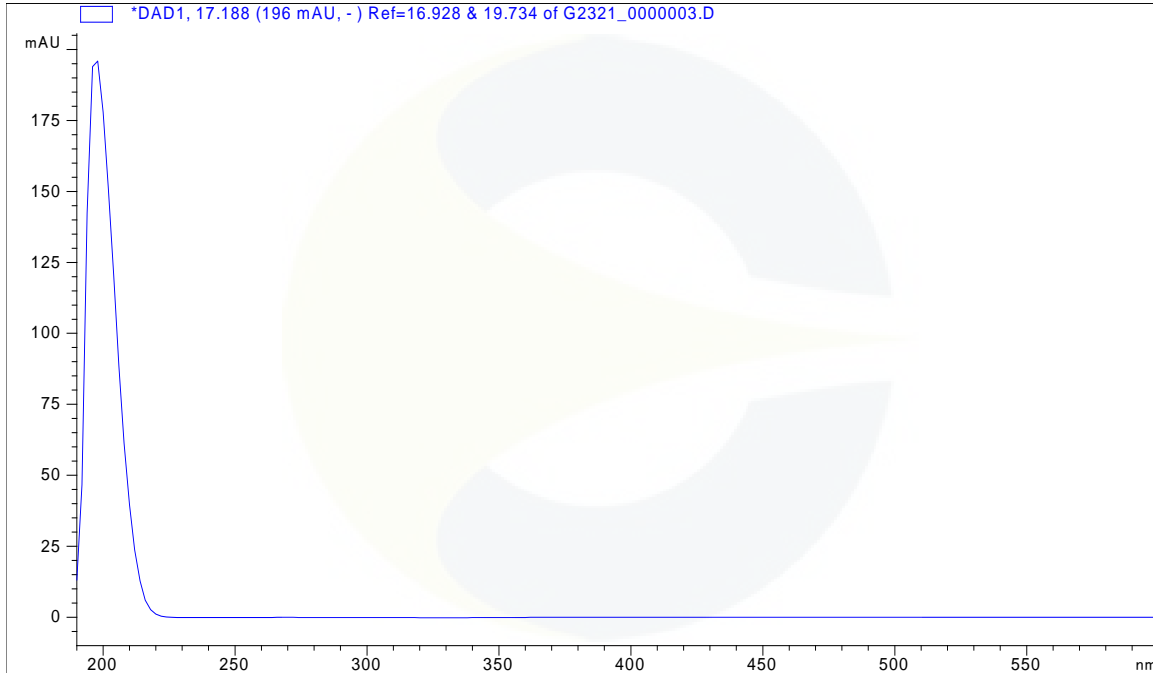
### HPLC CHROMATOGRAM OF BACOSIDE A (MIXTURE OF SAPONINS) (CDXP-21-00321)



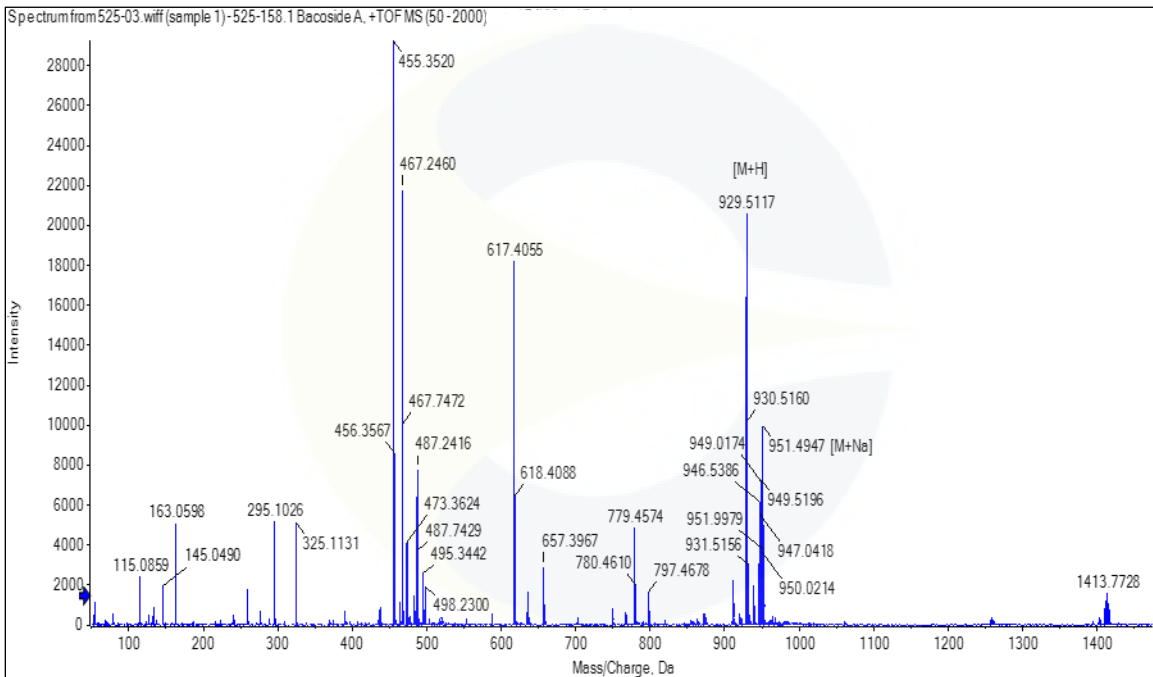
This document is the property of ChromaDex, Inc. and/or its relevant affiliates and contains confidential and proprietary material for the sole use of the intended recipient(s). Any review, use, distribution or disclosure by or to others is strictly prohibited.

Certificate of Analysis For Laboratory Use Only

**UV SPECTRUM AT RT = 17.2 MINUTES**



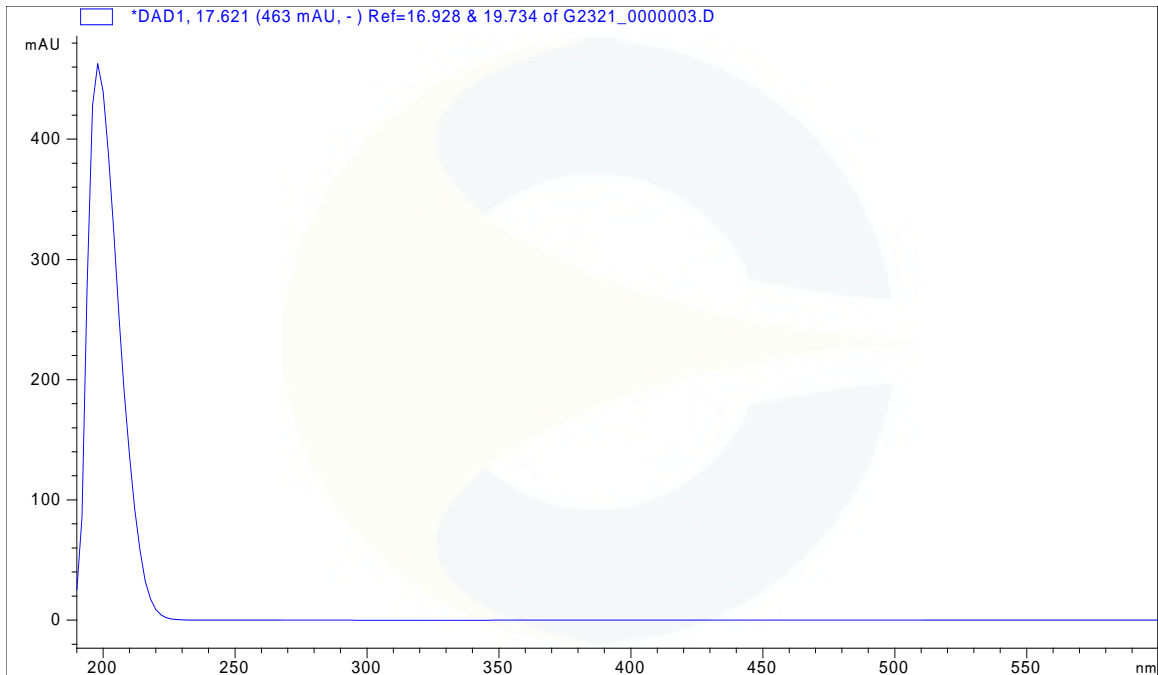
**MASS SPECTRUM AT RT = 17.2 MINUTES**



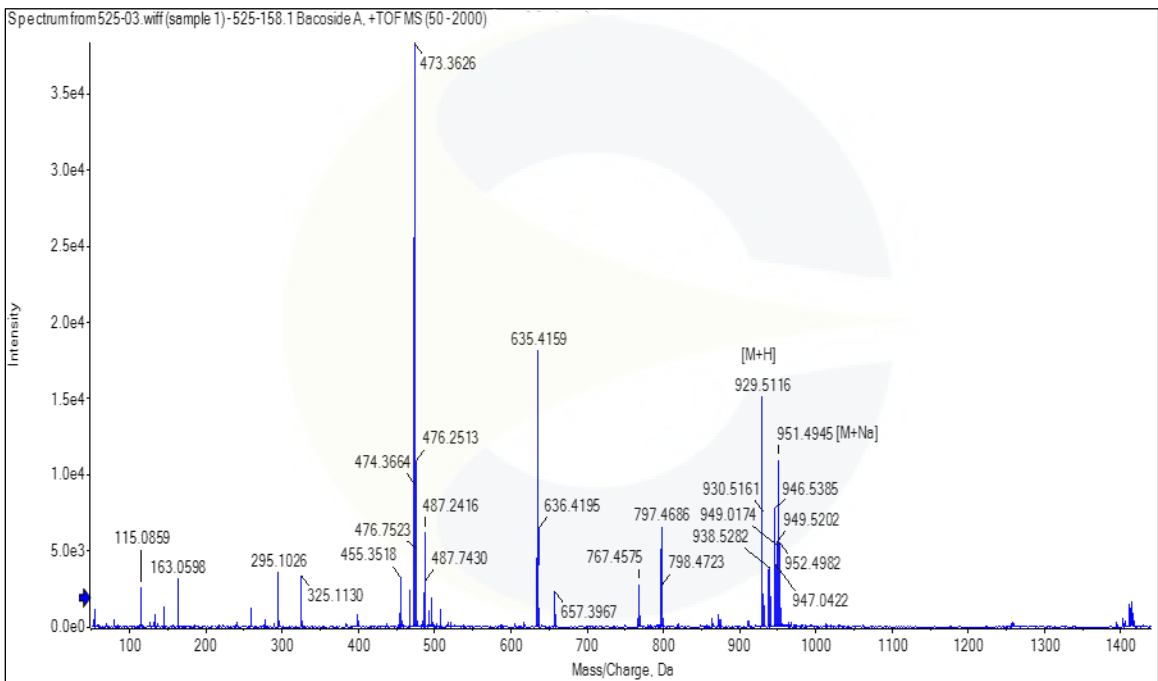
This document is the property of ChromaDex, Inc. and/or its relevant affiliates and contains confidential and proprietary material for the sole use of the intended recipient(s). Any review, use, distribution or disclosure by or to others is strictly prohibited.

Certificate of Analysis For Laboratory Use Only

**UV SPECTRUM AT RT = 17.6 MINUTES**



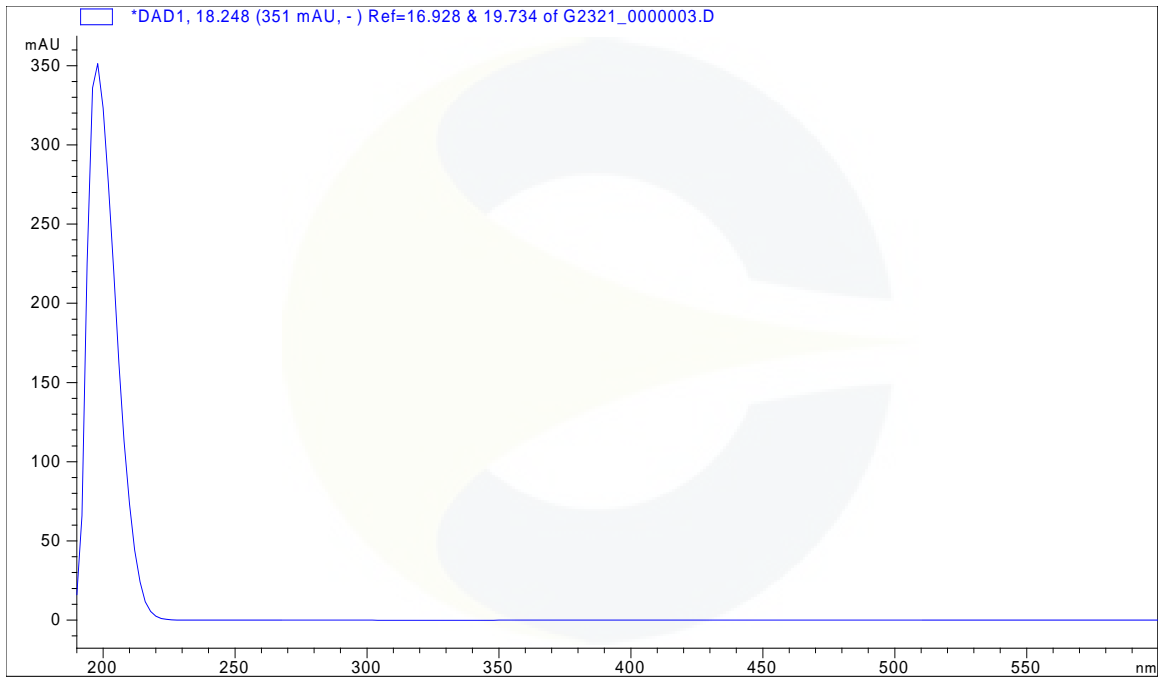
**MASS SPECTRUM AT RT = 17.6 MINUTES**



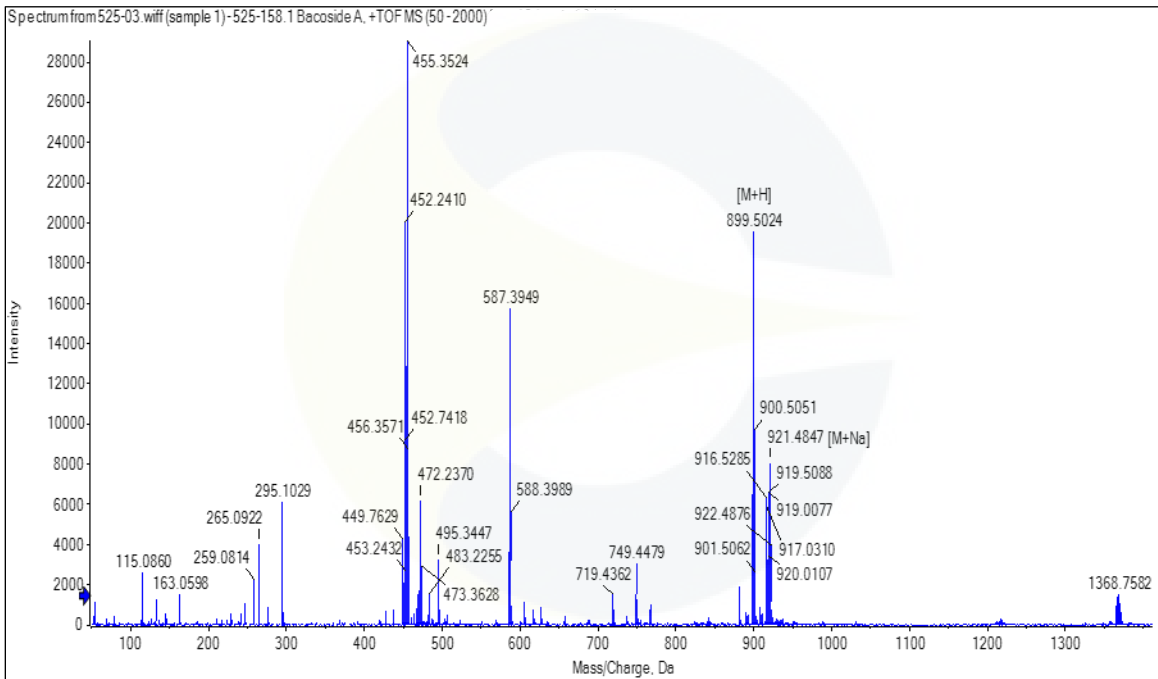
This document is the property of ChromaDex, Inc. and/or its relevant affiliates and contains confidential and proprietary material for the sole use of the intended recipient(s). Any review, use, distribution or disclosure by or to others is strictly prohibited.

Certificate of Analysis For Laboratory Use Only

**UV SPECTRUM AT RT = 18.2 MINUTES**



**MASS SPECTRUM AT RT = 18.2 MINUTES**

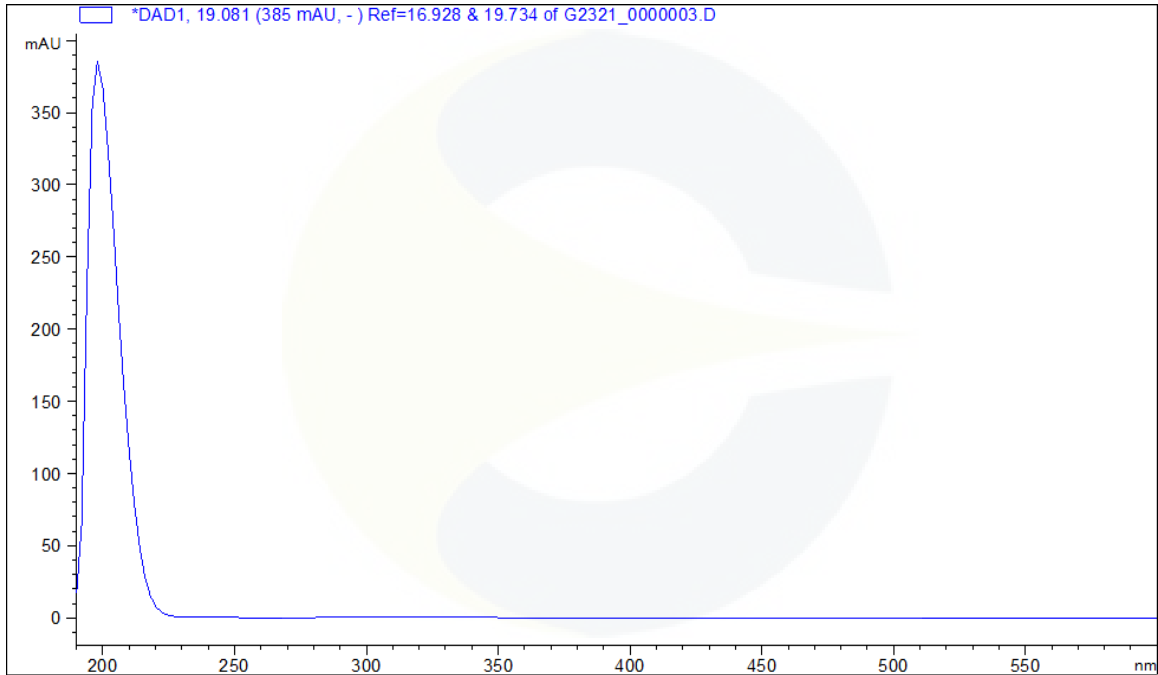


This document is the property of ChromaDex, Inc. and/or its relevant affiliates and contains confidential and proprietary material for the sole use of the intended recipient(s). Any review, use, distribution or disclosure by or to others is strictly prohibited.

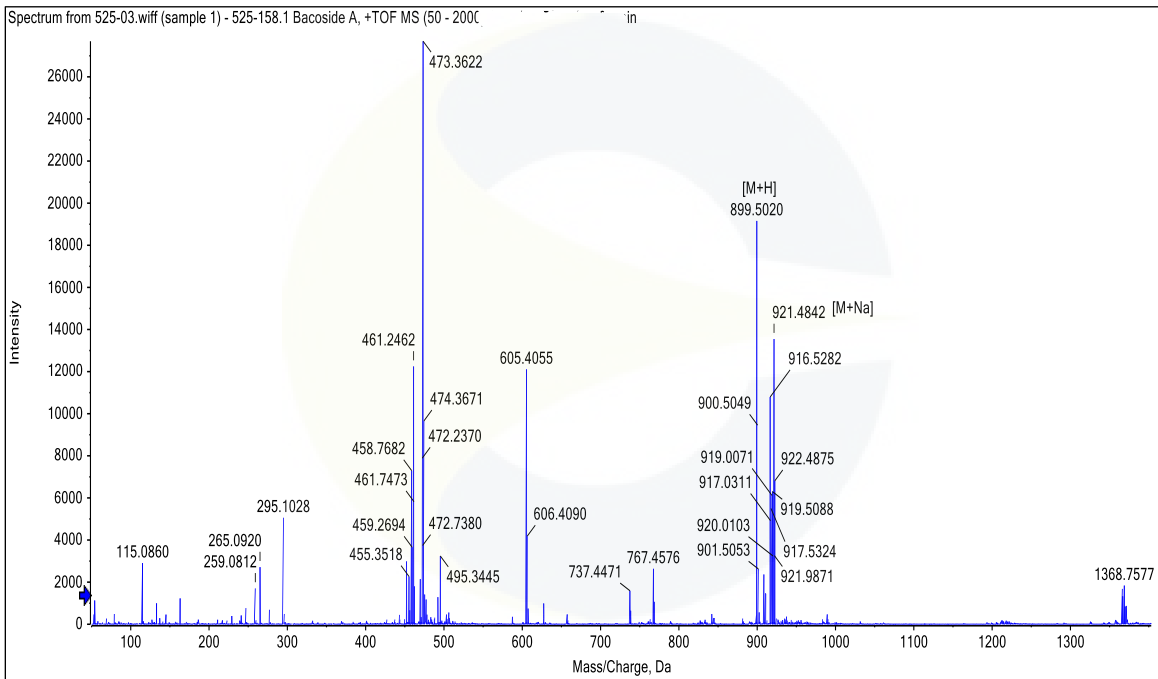
Certificate of Analysis

For Laboratory Use Only

UV SPECTRUM AT RT = 19.1 MINUTES

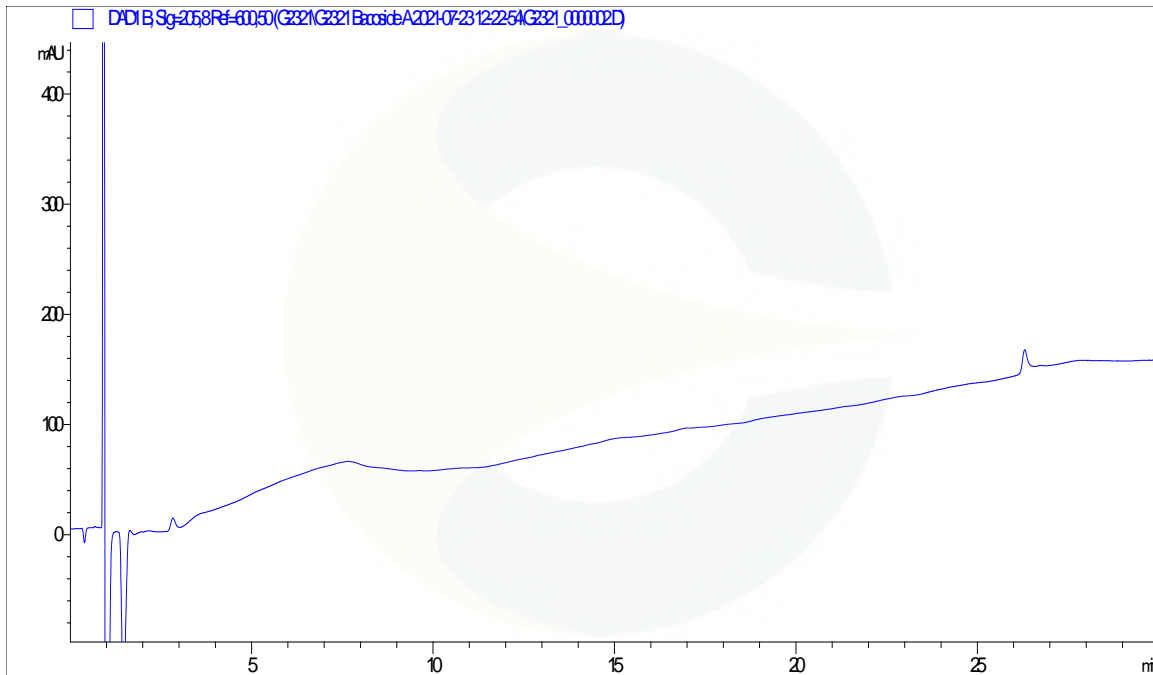


MASS SPECTRUM AT RT = 19.1 MINUTES



This document is the property of ChromaDex, Inc. and/or its relevant affiliates and contains confidential and proprietary material for the sole use of the intended recipient(s). Any review, use, distribution or disclosure by or to others is strictly prohibited.

Certificate of Analysis For Laboratory Use Only

**HPLC CHROMATOGRAM OF DILUENT BLANK**

**REVISION HISTORY**

<u>Revision History</u>	<u>Date of Revision</u>	<u>Document/Changes</u>
00	07/29/2021	New report

This document is the property of ChromaDex, Inc. and/or its relevant affiliates and contains confidential and proprietary material for the sole use of the intended recipient(s). Any review, use, distribution or disclosure by or to others is strictly prohibited.