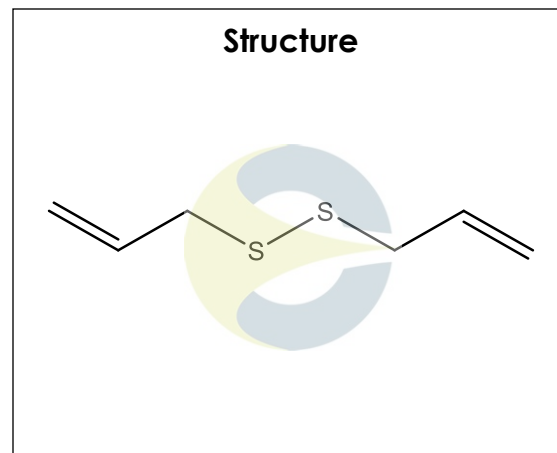


Certificate of Analysis
For Laboratory Use Only

PRODUCT NAME	Allyl disulfide
PART NUMBER	00001605
STANDARD TYPE	Analytical Standard (AS)
LOT NUMBER	00001605-720
REPORT NUMBER	CDXA-RSS-8842-00
SAMPLE NUMBER	CDXP-20-00125
DATE OF SAMPLE	03/02/2020
DATE OF REPORT	03/26/2020



CHEMICAL NAMES	Di-2-propen-1-yl disulfide; 4,5-Dithia-1,7-octadiene; Bis(2-propenyl) disulfide
CHEMICAL FORMULA	C ₆ H ₁₀ S ₂
MOLECULAR WEIGHT (MW)	146.27
CHEMICAL FAMILY	Sulfides
CAS NUMBER	[2179-57-9]
EC#(EINECS)	218-548-6
RTECS	BB1000000

ANALYTICAL RESULTS

TEST	METHOD	SPECIFICATION	RESULT
GC	See Below	NA	96.2%
Mass Spectrum	See Below	Conforms	Conforms
Appearance	NA	NA	Liquid

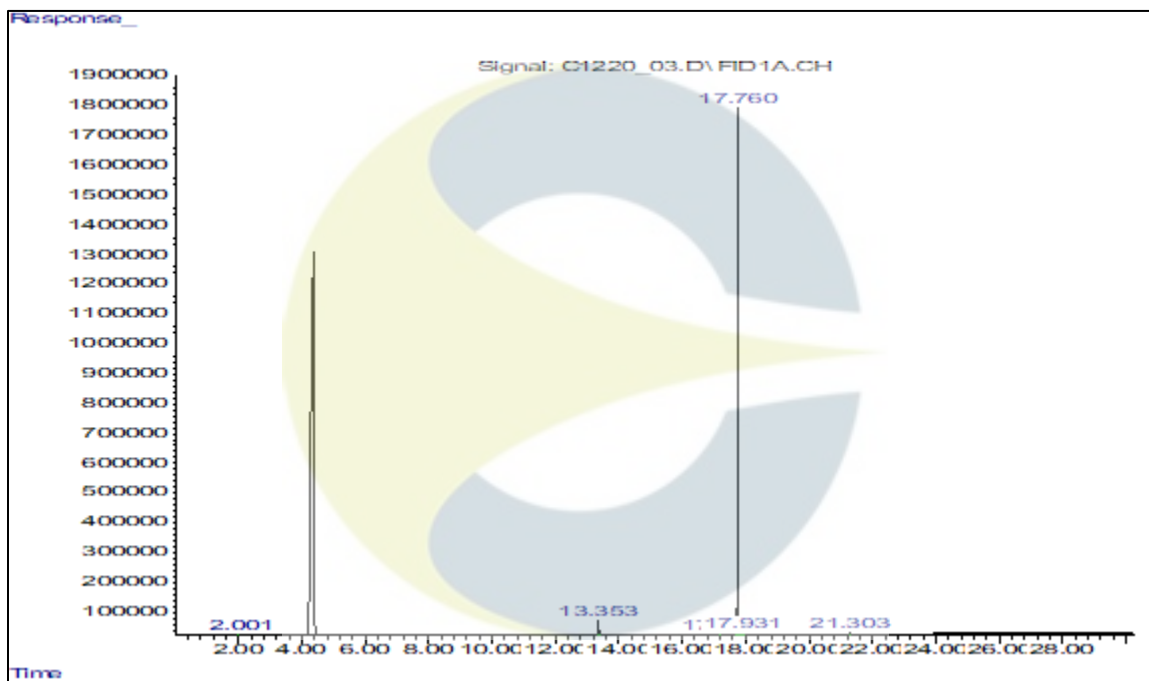
STORAGE CONDITIONS

STORAGE	+4 °C in a dry place.
EXPIRATION DATE	03/2025 under the above conditions.

This document is the property of ChromaDex, Inc. and/or its relevant affiliates and contains confidential and proprietary material for the sole use of the intended recipient(s). Any review, use, distribution or disclosure by or to others is strictly prohibited.

Certificate of Analysis
For Laboratory Use Only
ANALYTICAL CONDITIONS

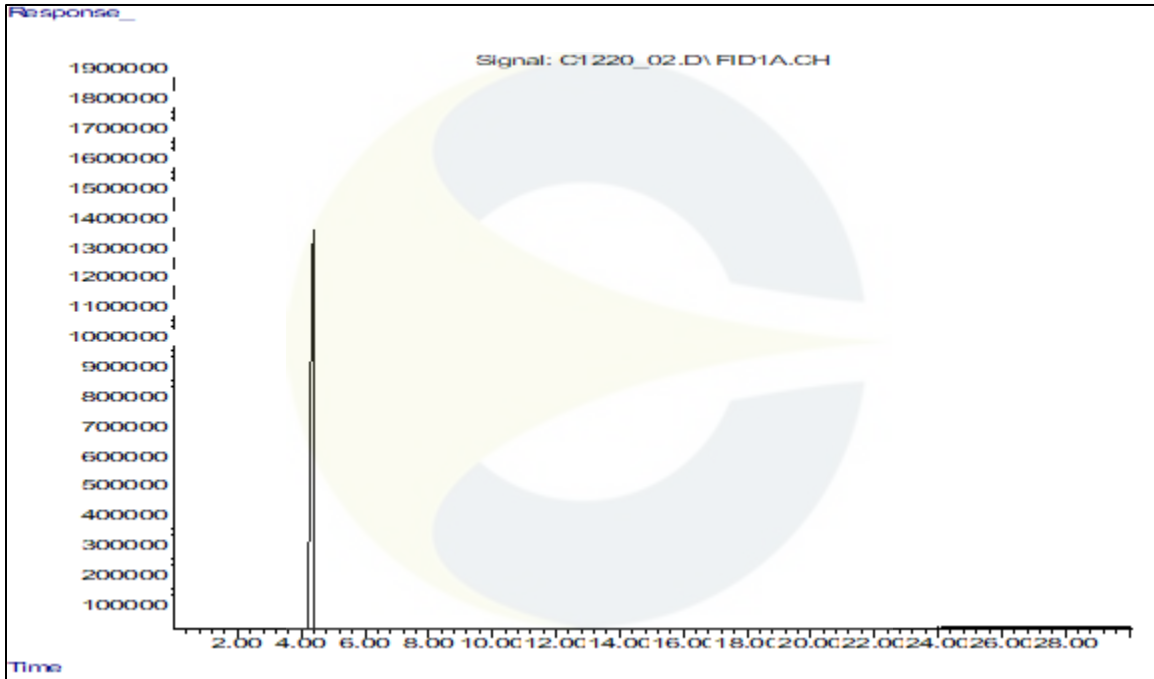
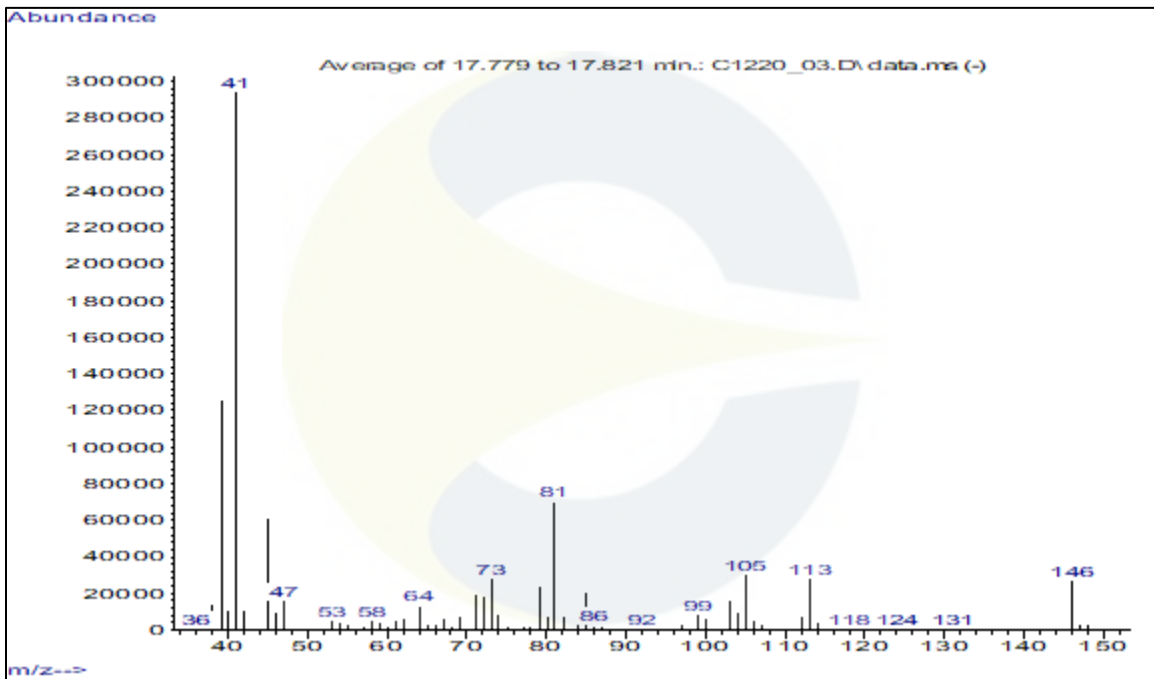
INSTRUMENT	AGILENT 6890N WITH FLAME IONIZATION DETECTOR (FID) AND AGILENT 5973N MASS SELECTIVE DETECTOR (MSD)
COLUMN	Agilent J&W DB-624 Ultra-Inert, 30 m x 0.25 mm x 1.4 µm; connected to an MXT Y-union, connected to an Agilent deactivated retention gap 10m x 0.25 mm: 10 m x 0.25 mm to FID; and a 5 m x 100 µm transfer line to MSD.
CARRIER GAS	Helium
COLUMN TEMP.	Isothermic 40 °C for 5.0 minutes, then increasing at 10.0 °C/minute to 240 °C. Hold at 240 °C for 5.0 minutes.
FLOW RATE	2.0 mL/minute
INJECTOR TEMP.	250 °C
INJECTOR SPLIT RATIO	20:1
INJECTION VOL.	1.0 µL
INJECTION CONC.	1.8 mg/mL in Carbon disulfide
DETECTION	FID (275 °C) & MSD (Transfer line 250 °C, Source 250 °C, Quad 200 °C)

GC CHROMATOGRAM OF ALLYL DISULFIDE (CDXP-20-00125)


This document is the property of ChromaDex, Inc. and/or its relevant affiliates and contains confidential and proprietary material for the sole use of the intended recipient(s). Any review, use, distribution or disclosure by or to others is strictly prohibited.

Certificate of Analysis

For Laboratory Use Only

GC CHROMATOGRAM OF DILUENT BLANK**MASS SPECTRUM OF ALLYL DISULFIDE (CDXP-20-00125)**

This document is the property of ChromaDex, Inc. and/or its relevant affiliates and contains confidential and proprietary material for the sole use of the intended recipient(s). Any review, use, distribution or disclosure by or to others is strictly prohibited.

Certificate of Analysis

For Laboratory Use Only

REVISION HISTORY

<u>Revision History</u>	<u>Date of Revision</u>	<u>Document/Changes</u>
00	03/26/2020	New report

This document is the property of ChromaDex, Inc. and/or its relevant affiliates and contains confidential and proprietary material for the sole use of the intended recipient(s). Any review, use, distribution or disclosure by or to others is strictly prohibited.