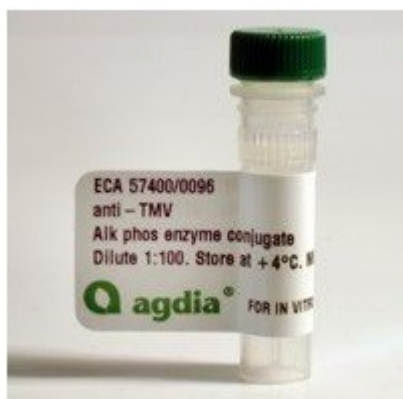


## Enzyme Conjugate for Rhizoctonia solani (Rhiz)



**Test Label:** Alkaline Phosphatase  
**Test Format:** Double Antibody Sandwich (DAS) ELISA

### Intended Use:

This enzyme conjugate is intended for use with its corresponding capture antibody (CAB).

Test performance using other capture antiserum has not been evaluated and is not guaranteed.

### Includes:

- Alkaline phosphatase enzyme conjugate
- [User Guide](#)

<input type="checkbox"/>	Option
<input type="checkbox"/>	Enzyme Conjugate for Rhizoctonia solani (Rhiz), 500 testwells ECA 41000/0500
<input checked="" type="checkbox"/>	Enzyme Conjugate for Rhizoctonia solani (Rhiz), 1000 testwells ECA 41000/1000
<input type="checkbox"/>	Enzyme Conjugate for Rhizoctonia solani (Rhiz), 5000 testwells ECA 41000/5000

### India Contact:

#### Life Technologies (India) Pvt. Ltd.

306, Aggarwal City Mall, Opposite M2K Pitampura, Delhi – 110034 (INDIA). Ph: +91-11-42208000, 42208111, 42208222, Mobile: +91-9810521400, Fax: +91-11-42208444  
 Email: [customerservice@lifetechindia.com](mailto:customerservice@lifetechindia.com) Website: [www.lifetechindia.com](http://www.lifetechindia.com)