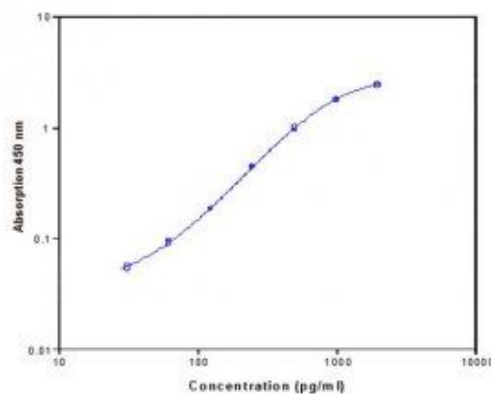


Human IL-22 ELISA Kit

PRODUCT SPECIFICATIONS

| | |
|----------------|---|
| Assay Range | 31.3 pg/ml - 2000 pg/ml |
| Sensitivity | 5.0pg/ml |
| Target species | Human |
| Incubation | 4h10 |
| Sample Type | Cell culture supernatants. Human serum and plasma. |
| Sample Size | 50 µl |
| Kit Content | Diaclone ELISA Kits include pre-coated strip plates, biotinylated secondary antibody, standards, controls (where applicable), buffers, streptavidin-HRP, TMB, stop reagents and a detailed procedure with Safety Data Sheet |
| Synonym | ILTIF |
| | |
| | |



IL-22 ELISA Kit

India Contact:

Life Technologies (India) Pvt. Ltd.

306, Aggarwal City Mall, Opposite M2K Pitampura, Delhi – 110034 (INDIA).

Mobile: +91-9810521400, Ph: +91-11-42208000 Email: customerservice@lifetechindia.com