

India Contact:

Life Technologies (India) Pvt. Ltd.  
Mobile: +91-9810521400, Ph: +91-11-42208000  
Email: [customerservice@lifetechindia.com](mailto:customerservice@lifetechindia.com)  
Web: [www.lifetechindia.com](http://www.lifetechindia.com)

## Product Information

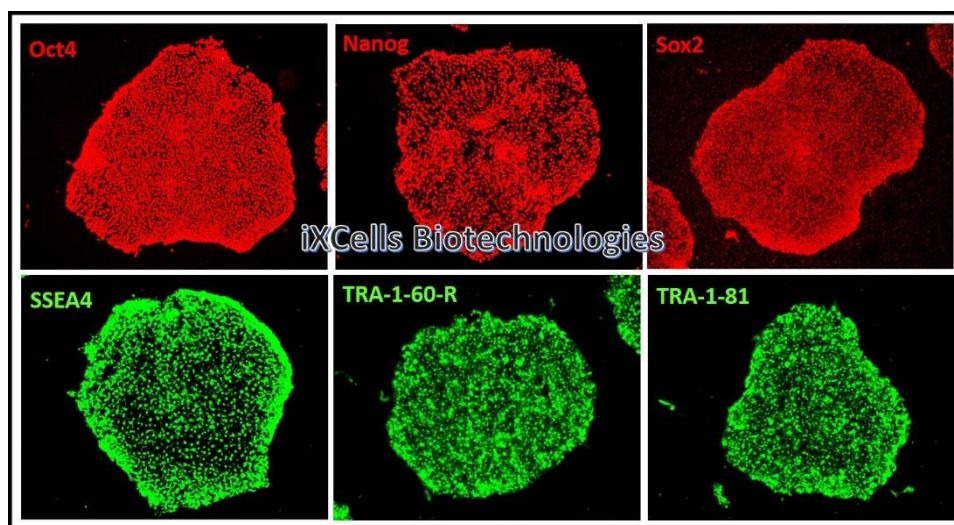
### Human iPS Cell Line (Normal Donor)

Catalog Number	30HU-002	Cell Number	~0.5-1.0 million cells/vial
Species	<i>Homo sapiens</i>	Storage Temperature	Liquid nitrogen

## Product Description

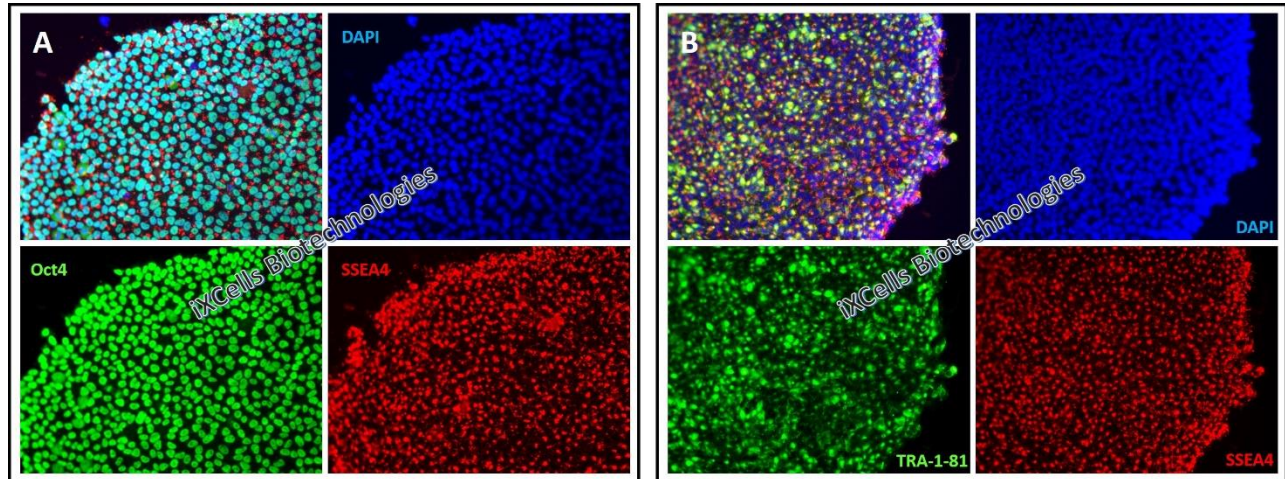
Induced Pluripotent Stem Cells (iPSCs) are a type of pluripotent stem cells that can be derived directly from adult somatic cells <sup>[1]</sup>. The derived iPSCs can propagate indefinitely, as well as give rise to other cell types in the body. iPSC cells, thus, hold great promise in the field of regenerative medicine by representing a single source of cells that could be used to replace those damaged/diseased cells.

**iXCells Biotechnologies** is proud to offer human iPS cell lines derived from the human somatic cells (dermal fibroblasts, adipose-derived stem cells, peripheral blood mononuclear cells) from different race, gender, age, and tissue resource. The pertinent donor information is available upon request ([info@ixcellsbiotech.com](mailto:info@ixcellsbiotech.com)). These iPS cells are established from a single clone and expanded in feeder-free conditions. The Certificate of Analysis is provided for each cell lot purchased. The cells have been fully characterized for their self-renewal and pluripotency. All the cells provided by iXCells are negative for mycoplasma, bacteria, yeast, and fungi. HIV-1, hepatitis B and hepatitis C.

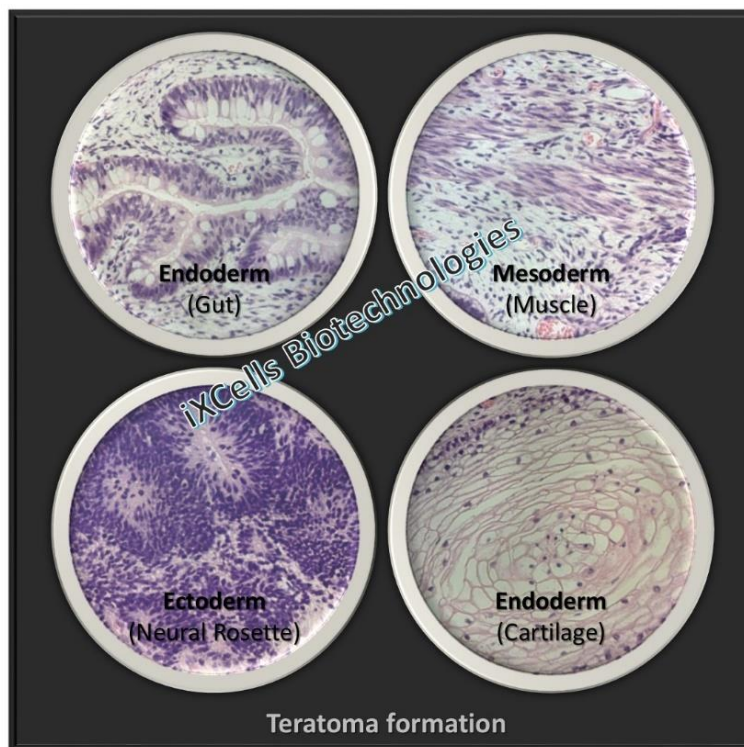


**Figure 1.** iXCells human iPS cells are characterized by immunostaining with Oct4, Nanog, Sox2, SSEA4, TRA-1-60-R, TRA-1-81.

Patient-derived iPS cell lines are also available as separate products. The currently available diseased specific iPS cell lines are derived from patients with Type 1 Diabetes (T1D), Type 2 Diabetes (T2D), Alzheimers's Disease (AD), Parkinson's Disease (PD), Amyotrophic Lateral Sclerosis (ALS). More disease-specific iPS cell lines are under development. We also provide custom [iPSC generation](#) and [iPSC differentiation](#) services to meet your needs.



**Figure 2.** (A) iXCells human iPS cells are positive for the transcription factor Oct4 (green) and the surface marker SSEA4 (red). (B) iXCells human iPS cells are positive for the surface markers TRA-1-81 (green) and SSEA4 (red).



**Figure 3.** *In vivo* validation of iXCells human iPS cells by teratoma formation.

## Product Details

<b>Tissue Origin</b>	Human iPSC Cells derived from dermal fibroblasts, adipose-derived stem cells, or peripheral blood mononuclear cells
<b>Package Size</b>	~0.5-1.0 million cells/vial
<b>Shipped</b>	Cryopreserved
<b>Storage</b>	Liquid nitrogen
<b>Growth Properties</b>	Adherent
<b>Media &amp; Reagents</b>	Human iPSC Growth Medium (Cat # MD-0018) MEF Conditioned Medium (Cat # MD-0015) Human iPSC Feeder-Free Growth Medium (Cat # MD-0019) Human iPSC Xeno-Free Growth Medium (Cat # MD-0074) iMEF Feeder (CF1), irradiated (Cat # 10MU-001) Matrigel Coated Plates (Cat # MD-0023)

## Protocols

### Thawing of Frozen Cells

1. Upon receipt of the frozen cells, it is recommended to thaw the cells and initiate the culture immediately in order to retain the highest cell viability.
2. Prepare Matrigel™ coated plates (Cat # MD-0023) or MEF feeder (Cat # 10MU-001) coated plates the day before recovering the cells.
3. To thaw the cells, put the vial in 37°C water bath with gentle agitation for ~1 minute. Keep the cap out of water to minimize the risk of contamination.
4. Pipette the cells into a 15ml conical tube with 5ml fresh culture media: Human iPSC Growth Medium (Cat # MD-0018) can be used in on-feeder culture system, MEF Conditioned Medium (Cat # MD-0015) or Human iPSC Feeder-Free Growth Medium (Cat # MD-0019) can be used in feeder-free culture system.
5. Centrifuge at 50g for 5 minutes at room temperature.
6. Remove the supernatant and re-suspend the cells in culture media supplemented with 10µM Y27632 (MD-0025).
7. Seed the cells on Matrigel™ coated plates (Cat# MD-0023) for feeder-free culture, or on feeder plates for on-feeder culture.
8. Incubate in 37°C CO<sub>2</sub> incubator overnight.
9. The next day, change to media without Y27632.
10. Change media daily until the cells are ready to be passaged. It may take 1-2 weeks to fully recover the cells before passaging.

*Note: There may be 5-20% differentiated cells after thaw. The cells will be stabilized after 2-3 passages.*

**Safety Precaution:** *it is highly recommended that protective gloves and clothing should be used when handling frozen vials.*

## References

[1] Okita K, Matsumura Y, Sato Y, Okada A, Morizane A, Okamoto S, Hong H, Nakagawa M, Tanabe K, Tezuka K, Shibata T, Kunisada T, Takahashi M, Takahashi J, Saji H, Yamanaka S. A more efficient method to generate integration-free human iPS cells. *Nat Methods*. 2011 May; 8(5):409-12.

## Disclaimers

This product is intended for laboratory research purposes only. It is not intended for use in humans. While iXCells Biotechnologies uses reasonable efforts to include accurate and up-to-date information on this product sheet, we make no warranties or representations as to its accuracy. Citations from scientific literature and patents are provided for informational purposes only. iXCells Biotechnologies does not warrant that such information has been confirmed to be accurate.

This product is sent with the condition that you are responsible for its safe storage, handling, and use. iXCells Biotechnologies is not liable for any damages or injuries arising from receipt and/or use of this product. While reasonable effort is made to insure authenticity and reliability of strains on deposit, iXCells Biotechnologies is not liable for damages arising from the misidentification or misrepresentation of cultures.

© iXCells Biotechnologies 2015. All rights reserved.