

India Contact:

Life Technologies (India) Pvt. Ltd.

Mobile: +91-9810521400, Ph: +91-11-42208000

 Email: [customerservice@lifetechindia.com](mailto:customerservice@lifetechindia.com)

 Web: [www.lifetechindia.com](http://www.lifetechindia.com)

## Product Information

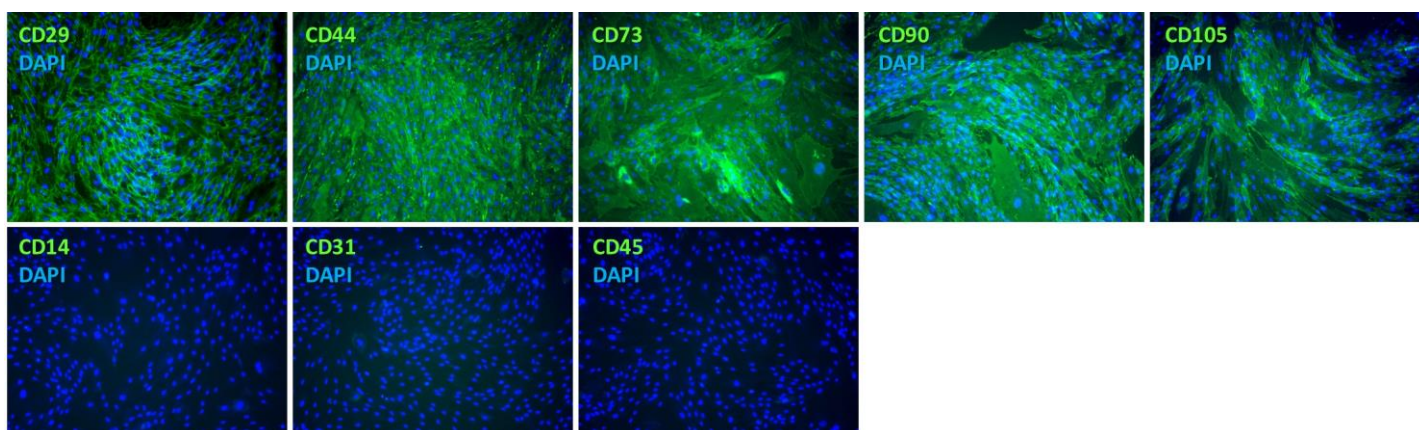
### Human Adipose Derived Stem Cells (hADSC)

Catalog Number	10HU-001 (Normal) 10HU-222 (Type 1 Diabetes) 10HU-007 (Type 2 Diabetes) 10HU-232 (Obesity)	Cell Number	0.5 million cells/vial; 1.0 million cells/vial (available for Normal)
Species	<i>Homo sapiens</i>	Storage Temperature	Liquid Nitrogen

### Description

Human Adipose-Derived Stem cells (ADSCs) are isolated from human lipoaspirate tissue collected during elective surgical liposuction procedures. ADSCs are available for normal donors, patients with Type 1 Diabetes, Type 2 Diabetes, or Obesity (BMI>30). It has been shown that the ADSCs demonstrate very similar phenotypic and functional characteristics to that of bone marrow-derived mesenchymal stem cells. Thousands of articles have been published on ADSCs using a variety of terminology, including preadipocytes, adipose-derived mesenchymal stem cells (AD-MSCs), adipose MSCs (AMSCs), adipose-derived adult stem (ADAS) cells, and adipose stromal/stem cells (ASCs). Normal human ADSCs have been reported to differentiate into many different lineages including chondrogenic, osteogenic, adipogenic and neural. And have been applied in studies include stem cell differentiation, regenerative medicine [1], and cell therapy [2].

iXCells Biotechnologies offers normal human adipose-derived stem cells (hADSC) from adipose tissues from single donor, and cryopreserved at passage 1. hADSC are positive for CD29, CD44, CD73, CD90, CD105, and negative for CD14, CD31, CD45 (Figure 1). hADSC can be *in vitro* differentiated into adipocytes and osteoblasts (Figure 2 and 3) using Adipocyte Differentiation Medium (Cat # MD-0005) and Osteogenic Differentiation Medium (Cat # MD-0006), separately. hADSC can be further expanded for 3-4 passages using Adipose-derived Stem Cell Growth Medium (Cat # MD-0003). These cells are negative for HIV-1, HBV, HCV, mycoplasma, bacteria, yeast, and fungi.



**Figure 1.** Immunostaining of cell surface markers of human ADSC.

## Product Details

<b>Tissue</b>	Human adipose tissue from liposuction procedures
<b>Package Size</b>	0.5 million cells/vial; 1.0 million cells/vial
<b>Passage Number</b>	P1
<b>Shipped</b>	Cryopreserved
<b>Storage</b>	Liquid nitrogen
<b>Growth Properties</b>	Adherent
<b>Media</b>	Adipose-Derived Stem Cell Growth Medium (Cat # MD-0003) Adipocyte Differentiation Medium (Cat # MD-0005) Osteogenic Differentiation Medium (Cat # MD-0006)

## Protocols

### Thawing of Frozen Cells

1. Upon receipt of the frozen hADSC, it is recommended to thaw the cells and initiate the culture immediately in order to retain the highest cell viability.
2. To thaw the cells, put the vial in 37°C water bath with gentle agitation for 1-2 minutes. Keep the cap out of water to minimize the risk of contamination.
3. Pipette the cells into a 15 mL conical tube with 5ml fresh **Adipose-derived Stem Cells Growth Medium** (Cat # MD-0003).
4. Centrifuge at 1,000 rpm (~220 g) for 5 minutes at room temperature.
5. Remove the supernatant and re-suspend the cells in fresh Adipose-derived Stem Cells Growth Medium.
6. Culture the cells in one 100 mm dish or one T75 flask. Change medium every 2-3 days until the cells reach 70-80% confluence.

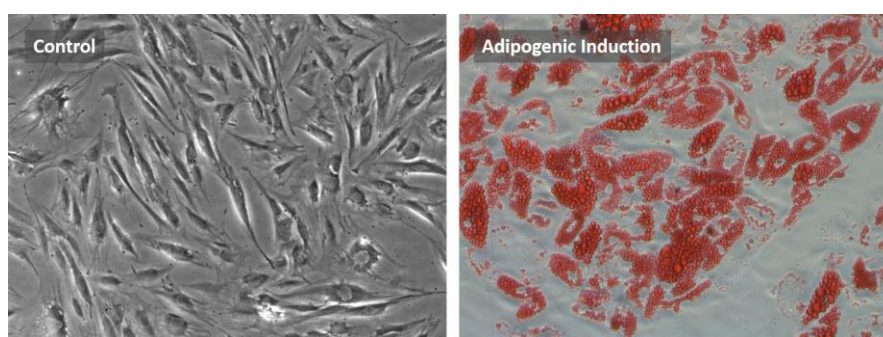
**Safety Precaution:** *it is highly recommended that protective gloves and clothing should be used when handling frozen vials.*

### Standard Culture Procedure

1. When cells reach >70-80% confluence, remove the medium, and wash once with PBS. (5mL/T75 flask).
2. Add 3-5 ml of 0.25% Trypsin-EDTA to the flask and incubate for ~5 minutes at 37°C. Neutralize the enzyme by adding 2-3 volumes of **Adipose-derived Stem Cells Growth Medium** (Cat # MD-0003).
3. Centrifuge 1,000 rpm (~220 g) for 5 minutes and re-suspend the cells in desired volume of medium.
4. Seed new culture vessels at  $5 \times 10^3$  cells/cm<sup>2</sup>. Change the medium every 2-3 days until the cells reach 70-80% confluency.

## Adipocyte Differentiation Protocol (12 well plate format)

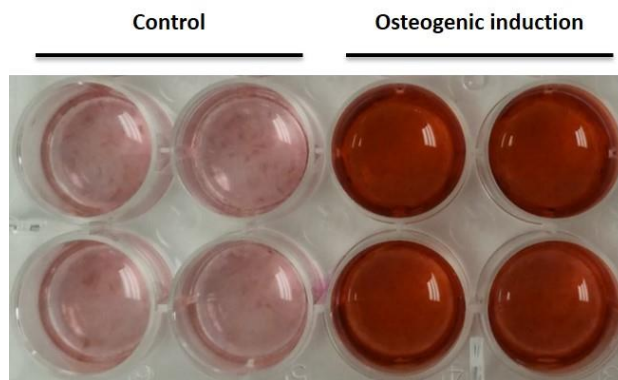
1. Grow hADSCs in **Adipose-Derived Stem Cell Growth Medium** (Cat# MD-0003) to >95% confluency.
2. Aspirate the growth medium and replace with 1.5 mL fresh growth medium/well, let the cells grow for 2-3 more days.
3. Aspirate the growth medium, apply 1.5 mL **Adipocyte Differentiation Medium** (Cat# MD-0005) per well to the cells.  
**Note:** Cells at this stage may detach from dish easily, so do not use pump to aspirate off the medium at this step. Use pipet and slowly remove the medium instead. Add Adipocyte Differentiation Medium very gently to avoid cell detachment.
4. Change fresh Adipocytes Differentiation Medium every 3 days (slowly remove and add the medium as described above).
5. Culture hADSCs in Adipocytes Differentiation Medium for 10-14 days, and analyze the percentage of cells with oil-droplet formation by Oil Red O Staining (Figure 2).



**Figure 2.** Human ADSC adipocyte differentiation (Day 14 post adipogenic induction).

## Osteogenic Differentiation Protocol (12 well plate format)

1. Grow hADSCs in **Adipose-Derived Stem Cell Growth Medium** (Cat# MD-0003) to ~80% confluency.
2. Carefully aspirate the growth medium, then apply 1.5 mL **Osteogenic Differentiation Medium** (Cat# MD-0006) per well to the cells.
3. Change fresh Osteogenic Differentiation Medium every 3 days. Be careful not to disturb the cell monolayer.
4. Culture the hADSCs for 3-4 weeks, and osteoblasts can be detected by Alizarin Red S staining (stain the extracellular calcium deposit) (Figure 3).



**Figure 3.** Human ADSC osteogenic induction (Day 24 post osteogenic induction). Alizarin Red S staining of osteoblasts. The extracellular calcium deposit was stained in bright orange-red color.

## References

- [1] Harasymiak-Krzyzanowska I et al. Adipose tissue-derived stem cells show considerable promise for regenerative medicine applications. Cell Mol Biol Lett. 2013; 18(4): 479-493.
- [2] Bertheuil N, et al and Tarte K. Adipose-derived stromal cells: history, isolation, immunomodulatory properties and clinical perspective. Ann Chir Plast Esthet. 2015;60(2): 94-102.

## Disclaimers

This product is intended for laboratory research purposes only. It is not intended for use in humans. While iXCells Biotechnologies uses reasonable efforts to include accurate and up-to-date information on this product sheet, we make no warranties or representations as to its accuracy. Citations from scientific literature and patents are provided for informational purposes only. iXCells Biotechnologies does not warrant that such information has been confirmed to be accurate.

This product is sent with the condition that you are responsible for its safe storage, handling, and use. iXCells Biotechnologies is not liable for any damages or injuries arising from receipt and/or use of this product. While reasonable effort is made to insure authenticity and reliability of strains on deposit, iXCells Biotechnologies is not liable for damages arising from the misidentification or misrepresentation of cultures.  
© iXCells Biotechnologies 2015. All rights reserved.