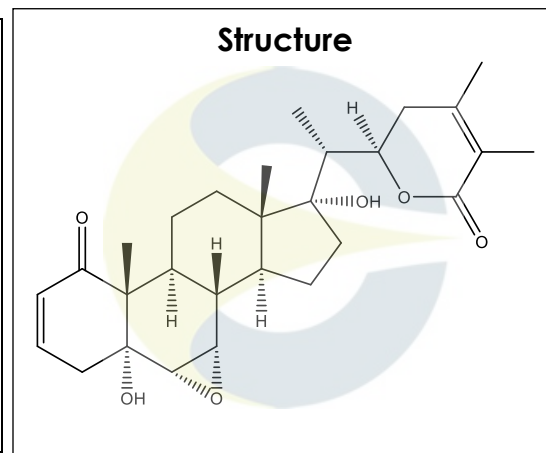


Certificate of Analysis
For Laboratory Use Only

PRODUCT NAME	Withanone
PART NUMBER	00023257
STANDARD TYPE	Analytical Standard (AS)
LOT NUMBER	00023257-J052
REPORT NUMBER	CDXA-RSS-9588-00
SAMPLE NUMBER	CDXP-21-00880
DATE OF SAMPLE	12/09/2021
DATE OF REPORT	12/17/2021



CHEMICAL NAMES	(22R)-6 α ,7 α -Epoxy-5,17,22-trihydroxy-1-oxo-5 α -ergosta-2,24-dien-26-oic acid δ -lactone
CHEMICAL FORMULA	C ₂₈ H ₃₈ O ₆
MOLECULAR WEIGHT (MW)	470.60
CHEMICAL FAMILY	Triterpenes
CAS NUMBER	[27570-38-3]
EC#(EINECS)	NA
RTECS	NA

ANALYTICAL RESULTS

TEST	METHOD	SPECIFICATION	RESULT
HPLC	0.700.10.2.METH22	≥ 75%	98.8%
Mass Spectrum	0.700.12.27	Conforms	Conforms
Appearance	NA	NA	White powder

STORAGE CONDITIONS

STORAGE	+4 °C in a dry place.
EXPIRATION DATE	12/2026 under the above conditions.

This document is the property of ChromaDex, Inc. and/or its relevant affiliates and contains confidential and proprietary material for the sole use of the intended recipient(s). Any review, use, distribution or disclosure by or to others is strictly prohibited.

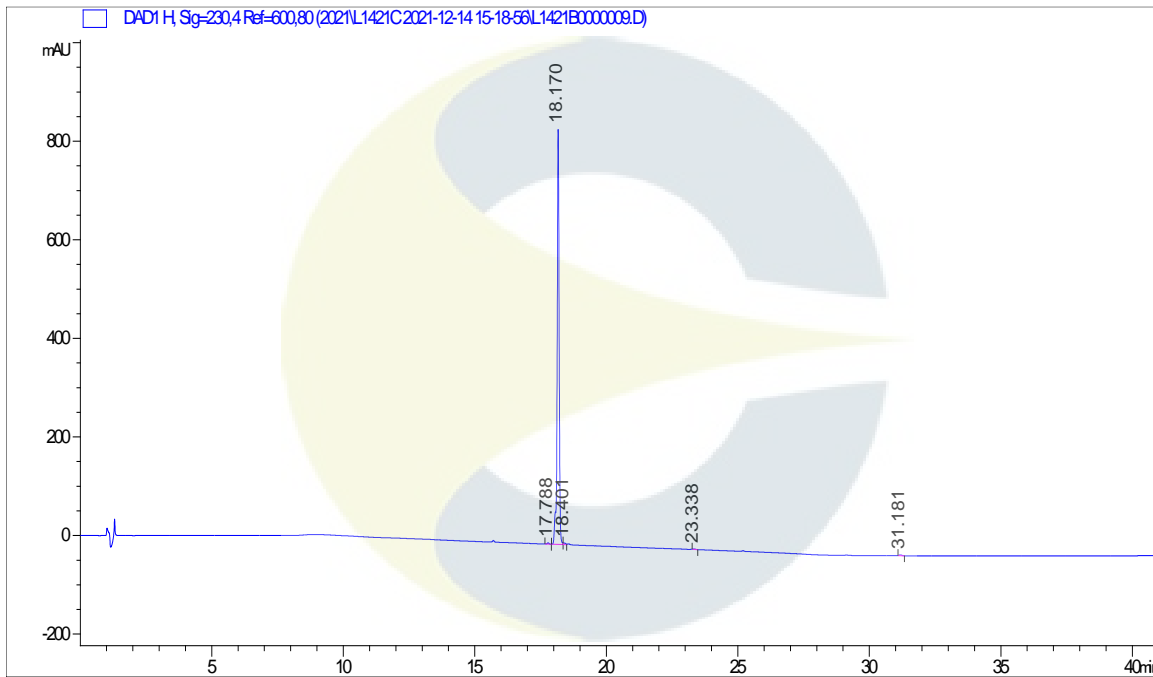
Certificate of Analysis

For Laboratory Use Only

ANALYTICAL CONDITIONS

INSTRUMENT	AGILENT 1260 HPLC UV-VIS (DAD); AB-SCIEX 6600 TRIPLE TOF
COLUMN	Phenomenex Luna C18(2) 150 x 2.00 mm, 5 µm particle size
MOBILE PHASE	A - 0.1% Trifluoroacetic acid in Ultrapure water, B - Acetonitrile; Isocratic 5% B for 5 minutes, then increasing to 95% B over 20 minutes. Hold at 95% B for 15 minutes, then decreasing to 5% B for 1 minute.
COLUMN TEMP.	60 °C
FLOW RATE	0.4 mL/minute
INJECTION VOL.	1.0 µL
INJECTION CONC.	1.0 mg/mL in Methanol
DETECTION	230 ± 2 nm

HPLC CHROMATOGRAM OF WITHANONE (CDXP-21-00880)

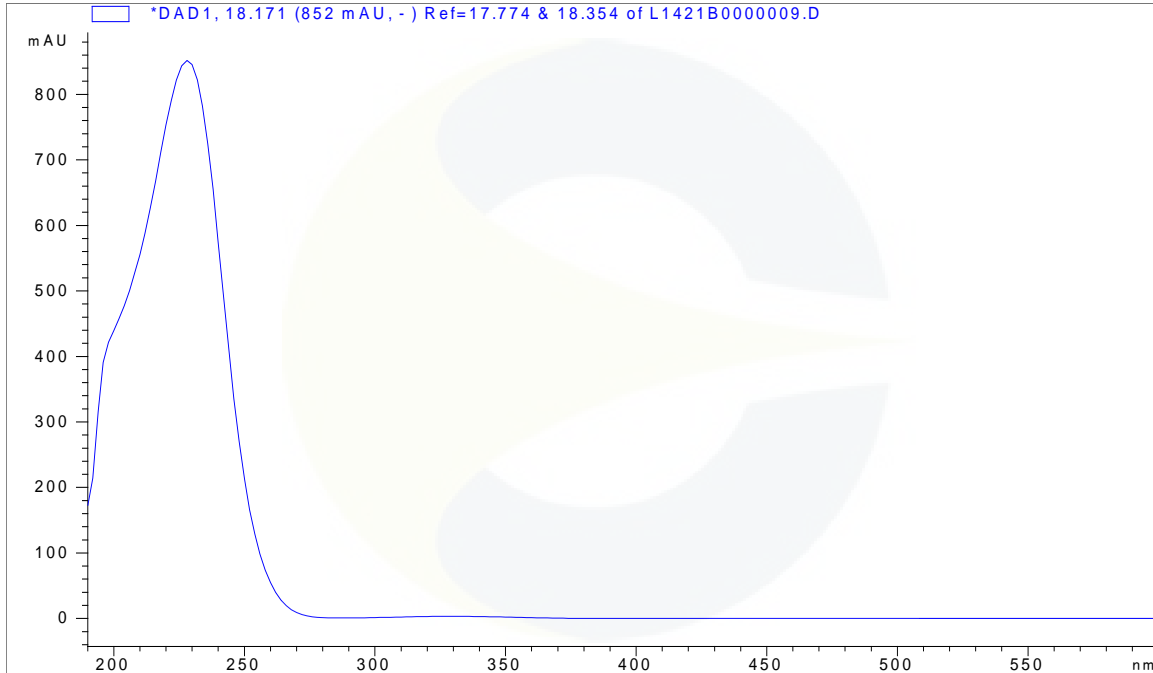


This document is the property of ChromaDex, Inc. and/or its relevant affiliates and contains confidential and proprietary material for the sole use of the intended recipient(s). Any review, use, distribution or disclosure by or to others is strictly prohibited.

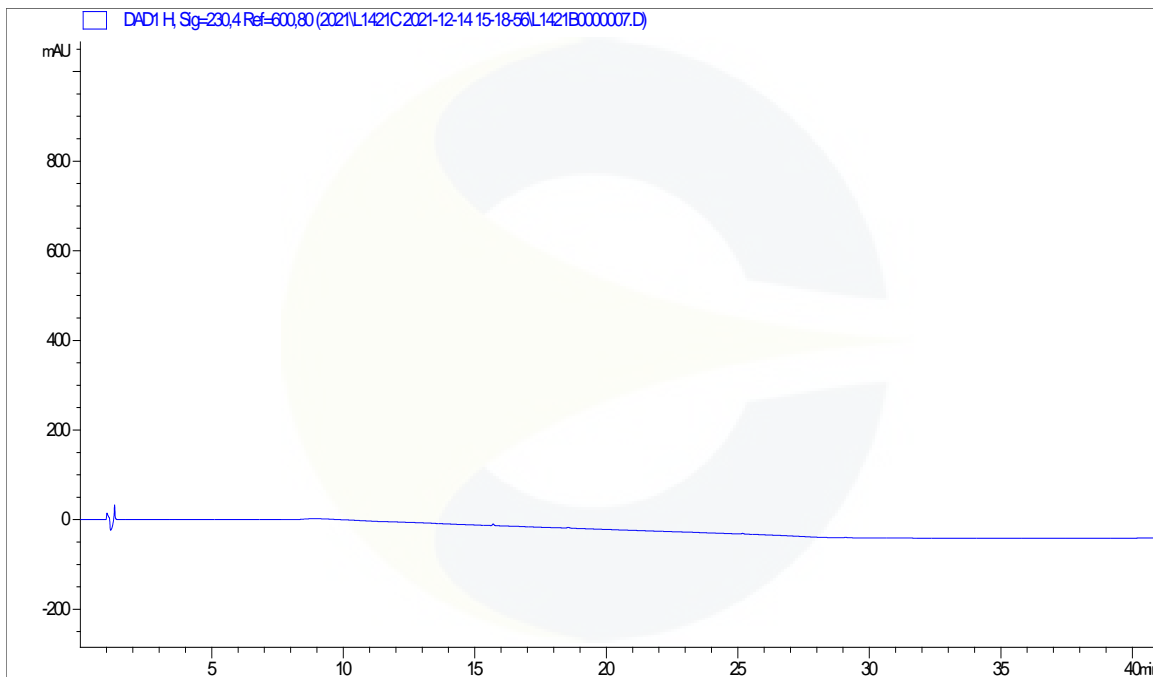
Certificate of Analysis

For Laboratory Use Only

UV SPECTRUM AT 18.2 MINUTES



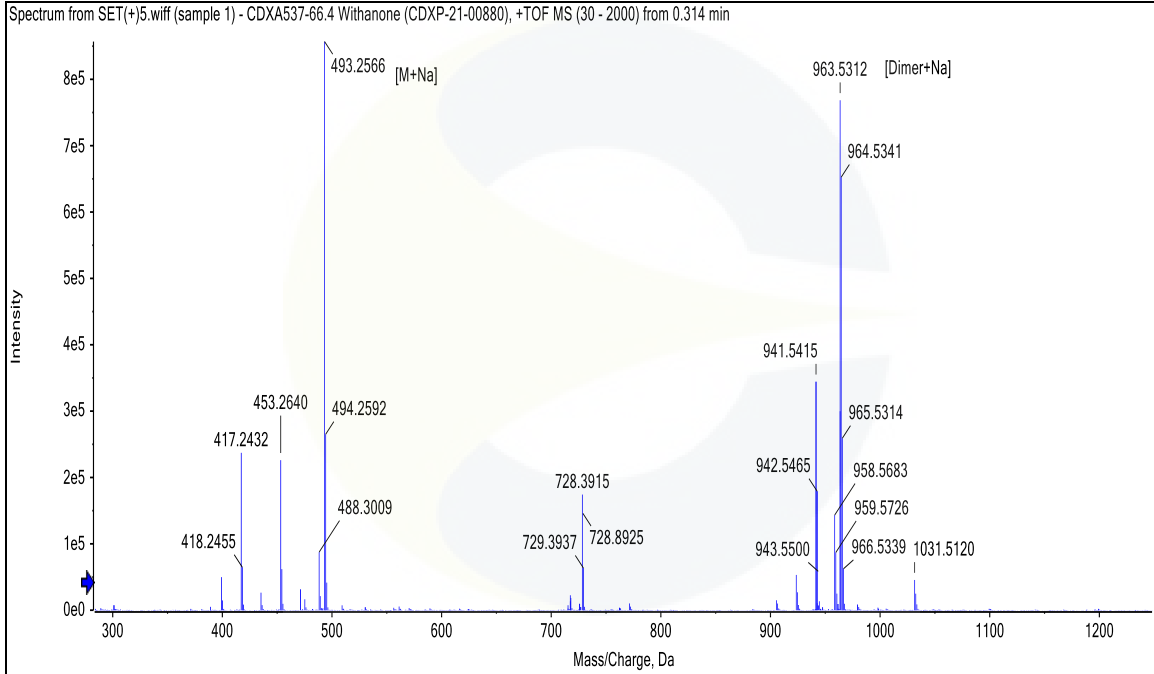
HPLC CHROMATOGRAM OF DILUENT BLANK



This document is the property of ChromaDex, Inc. and/or its relevant affiliates and contains confidential and proprietary material for the sole use of the intended recipient(s). Any review, use, distribution or disclosure by or to others is strictly prohibited.

Certificate of Analysis For Laboratory Use Only

MASS SPECTRUM OF WITHANONE (CDXP-21-00880)



REVISION HISTORY

<u>Revision History</u>	<u>Date of Revision</u>	<u>Document/Changes</u>
00	12/17/2021	New report

This document is the property of ChromaDex, Inc. and/or its relevant affiliates and contains confidential and proprietary material for the sole use of the intended recipient(s). Any review, use, distribution or disclosure by or to others is strictly prohibited.