

Certificate of Analysis

FOR LABORATORY USE ONLY

PRODUCT	sickle-pod senna (<i>Senna tora</i>) Seed
PART NUMBER	00020993
REFERENCE TYPE	Biomass Reference Material (RGBRM)*
LOT NUMBER	00020993-254
COMMON NAME	sickle-pod senna
LATIN NAME	<i>Senna tora</i> (L.) Roxb. syn. <i>Cassia tora</i> L. [Fabaceae]
PLANT PART	Seed
CDXA NUMBER	CDXA-07-1578
REPORT NUMBER	CDXA-RGBRMR-083-01
DATE OF SAMPLE	28 June 2008
DATE OF RE-EVALUATION	14 May 2014
DATE OF REPORT	29 July 2014

*Note – Reagent Grade (RG) BRM is not a voucher specimen and has not been evaluated by microscopy techniques

ANALYTICAL RESULTS

TEST	METHOD	RESULT
Appearance	Macroscopy	(1) Whole/Cut: Dark brown shiny seed pods (2) Milled: Mustard yellow fine powder
HP-TLC	99.1-CD-2.0-000143	Conforms

STORAGE CONDITIONS

STORAGE	20-30 °C; Dry storage area; Insect free; Volatile free
EXPIRATION DATE	05/2029 under the above conditions

MACROSCOPY

(1)



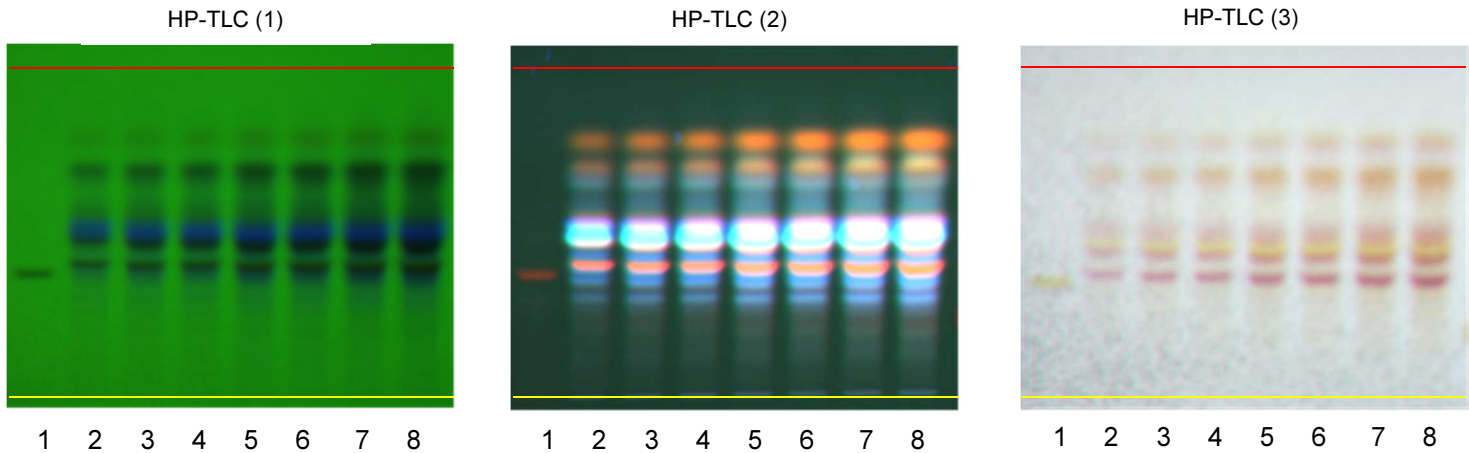
Certificate of Analysis

FOR LABORATORY USE ONLY

HP-TLC CONDITIONS

STATIONARY PHASE	Silica gel 60, F ₂₅₄ , 10 x 10 cm HP-TLC plates
SAMPLE PREPARATION	0.5 g + 5 ml methanol, sonicated in hot water bath for ~10 minutes.
MOBILE PHASE	Isopropyl alcohol/ Ethyl Acetate/ Acetic Acid/ Water [4/4/0.1/2.9]
CHAMBER TEMPERATURE	Ambient
DETECTION	(1) UV 254 nm (2) UV 365 nm (3) KOH spray reagent → visible light

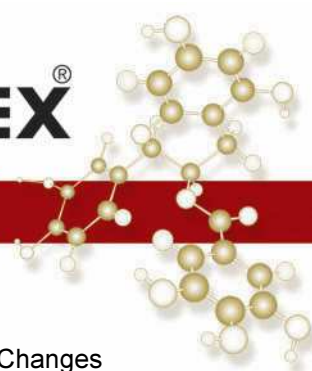
HP-TLC PLATES



YELLOW LINE = SAMPLE ORIGIN
RED LINE = SOLVENT FRONT @ 70MM

HP-TLC LANE APPLICATIONS

Lane	ID	Lane	ID
1	Sennoside A	5	<i>Senna tora</i> RGBRM
2	<i>Senna tora</i> RGBRM	6	<i>Senna tora</i> RGBRM
3	<i>Senna tora</i> RGBRM	7	<i>Senna tora</i> RGBRM
4	<i>Senna tora</i> RGBRM	8	<i>Senna tora</i> RGBRM

**REVISION HISTORY**

<u>Revision History</u>	<u>Date of Revision</u>	<u>Document/Changes</u>
00	19 February 2008	New report
01	29 July 2014	Passed re-evaluation; updated common name; updated Latin name; updated method number; updated expiration date; general template update